

South Dakota **Simmentaler**

& North Dakota
Simmental Scene



The genetics worth waiting for!

KELLER BROKEN HEART RANCH

Thursday,
March 5, 2020

1:00 p.m., At the Ranch, Mandan, ND

SELLING 154 HEAD

91 High-Performance Red & Black
Simmental & SimAngus™ Bulls and 63 Red
& Black Simmental & SimAngus™ Heifers



CE 16
BW 0.9
WW 90
YW 138
MCE 10
M 24
MWW 69
API 150
TI 90

G083 - #3618702 - 3/4 SM - Homo Polled/Black
KBHR WENTZ E190 x WS MISS SUGAR C4
2 full ET brothers sell!



CE 15
BW -0.8
WW 65
YW 100
MCE 10
M 28
MWW 60
API 149
TI 79

G121 - #3618740 - 5/8 SM - Homo Polled/Black
KBHR WENTZ E190 x BAR CK MS X38 106Z
4 full ET brothers sell!



CE 17
BW -1.7
WW 88
YW 131
MCE 10
M 22
MWW 66
API 146
TI 88

G035 - #3618654 - 3/4 SM - Homo Polled
WS ALL ABOARD B80 x KBHR A024



CE 14
BW 0.1
WW 90
YW 133
MCE 8
M 22
MWW 67
API 154
TI 92

G104 - #3618723 - PB SM - Homo Polled
WS ALL ABOARD B80 x KBHR C078
2 full ET brothers sell!



CE 16
BW -2.8
WW 59
YW 86
MCE 11
M 28
MWW 58
API 189
TI 91

G112 - #3618731 - 3/4 SM - Homo Polled/Black
TRPH RRR NIGHTFORCE B30 x BAR CK MS X38 106Z



CE 16
BW -1.9
WW 69
YW 106
MCE 12
M 29
MWW 64
API 179
TI 91

G137 - #3618756 - PB SM - Homo Polled/Black
KBHR HIGH ROAD E283 x BAR CK MS X38 106Z
6 full ET brothers & pick of full ET sisters sell!

ALLIED
GENETIC RESOURCES

Dwight, Susan & Jake Keller — Luke & Katy Keller — Tessa & Thomas Osterbauer

701-471-5215 (Dwight) • 701-471-1142 (Luke) • 701-471-5065 (Jake)

701-445-7350 (Home) • 1573 55th St., Mandan, ND 58554 • kbhr@westriv.com • www.kbhrsimental.com

DVAuction

EPDs
1/9/2020

NORTH DAKOTA SIMMENTAL ASSOCIATION

BOARD OF DIRECTORS

WWW.NORTHDAKOTASIMMENTAL.COM

David Doll, President (2021)
3991 36th St
New Salem, ND 58563
701-843-7947
dollfarm@westriv.com

Pat Thorson (2020)
16644 51st St SE
Kindred, ND 58051
701-371-8230
pat.thorson@westcentralag.com

Bryan Leapaldt, Vice President (2022)
5812 57th St NE
Leeds, ND 58346
701-739-8764
bleapaldt@gmail.com

Tim Clark, President (2021)
1999B 18th St NW
Turtle Lake, ND 58575
701-448-2815
Tim.Clark@hubbardfeeds.com

Kim Myers, Secretary/Treasurer
12066 57th St SE
Kathryn, ND 58049
701-308-1018
gkmyers@outlook.com

Dusty Kunkel (2021)
4513 Co Rd 85
New Salem, ND 58563
701-843-7006
kdkunkel@westriv.com

Doug Bichler (2019)
130 83rd St SE
Linton, ND 58552
701-254-4306
doughbichler@hotmail.com

Davis Kinn (2023)
212 South Ave.
Turtle Lake, ND 58575
701-400-5108
dkinn10@hotmail.com

JR Aufforth (2019)
6644 98th St NW
Bowbells, ND 58721-9315
701-339-1880
npsimm@gmail.com

Kelly Hanson (2023)
RR 1 Box 129
Hannaford, ND 58448
701-789-1391
kelly.hanson@centralplainsag.net

*(Year) denotes the end of term

SOUTH DAKOTA SIMMENTAL ASSOCIATION

BOARD OF DIRECTORS

WWW.SOUTHDAKOTASIMMENTAL.COM

Clay Duxbury, President (2021)
21060 375th Ave
Wessington, SD 57381
jackpotcattle@yahoo.com

Ross Demers (2020)
28381 318th AVE
Colome, SD 57528
605-840-4188
demersranch@goldenwest.net

Mike Stavick, Vice President (2020)
10752 Bia Road 15
Veblen, SD 57270
605-237-4663
stavickx@tnics.com

Chris Effling (2022)
P.O. Box 23
Highmore, SD 57345
605.769.0142
ceffling@tsln-fre.com

Kevin Blagg, Treasurer (2022)
PO Box 294
Salem, SD 57058
605-240-0015
kblagg@firstdakota.com

Harley Cable (2022)
23447 Rocky Rd
Pukwana, South Dakota
605-894-4464
hdcable@midstatesd.net

Colton Buus, Secretary (2021)
24352 438th Ave
Canova, SD 57321
605-214-3532
colton.buus@gmail.com

SD Junior Coordinators
Cam Fagerhaug, 605-350-2018
Amber Blagg, 605-240-0028

Cam Fagerhaug (2020)
23351 371st Ave
Wessington Springs, SD
605-350-2018
cam.fagerhaug@gmail.com

*(Year) denotes the end of term

South Dakota SimmenTeller & North Dakota Simmental Scene

Amy Stangeland
8670 7th ST NE
Glenfield, ND 58443
701-650-1210
stangelandcreativeservices@mail.com

The following terms and conditions have been agreed on by the North Dakota & South Dakota Simmental Association's Board of Directors and the Publication Committee.

Advertising Space Rates

Size	4C
Full Page	\$625
½ Page	\$450
¼ Page	\$250
Business Card	\$200 (per year)

Advertising Deadlines

Issue	Deadline
November	October 9, 2020
January	December 4, 2020
February	January 15, 2021

Terms

All advertising accounts are due and payable as invoiced. Interest charges of 1% per month will be assessed to accounts that are 30 days past due.

Delinquent Advertiser's Account

Advertisers knowingly and expressly agree and consent that, whenever accounts receivable for an advertiser have not been paid as of 90 days from date involved, advertising privileges will be suspended until full payment has been received.

Copy Changes

Alterations in advertising copy, if requested after closing dates will be permitted only if time allows.

The North Dakota & South Dakota Simmental Associations and this publication reserve the right to refuse any advertising copy at our sole discretion. The North Dakota & South Dakota Simmental Associations and this publication assume no responsibility for the accuracy of the advertising content submitted. Advertisers assume all responsibility for the accuracy and truthfulness of submitted advertising containing pedigrees or statements regarding performance.

Editorial Content

Opinions expressed are those of the writer and not necessarily those of the North Dakota & South Dakota Simmental Associations or of this publications. Photographs and manuscripts are welcome, but no responsibility is assumed either while in transit or while in this office.

About the Cover

Pen of bulls at the C Diamond Simmental Sale. Photo submitted by Kelsey Nicholson.



Amy Stangeland
Editor

FROM THE EDITOR

Greetings Cattle Producers,

As you read this letter I hope your finding calving season and sale season to be quite a success and joy this year!!

This issue is highlighting the sales that are coming up at the end of Feb-May 2020. We also were able to highlight the South Dakota state sale events and what the South Dakota juniors had going on summer of 2019, be sure to check those things out!

Remember to mark your calendars for the Fall Focus coming up in August in Roanoke, Virginia. It will be a great time of learning and connecting with other Simmental Breeders.

Have a great summer and we will be back in November with our next issue for 2020!!

Amy Stangeland

TABLE OF CONTENTS

8 BIRTH WEIGHT UPDATE FOR THE APPROACHING CALVING SEASON

10 NORTH DAKOTA SIMMENTAL ASSOCIATION YOUTH SCHOLARSHIPS

14 CARCASS EXPANSION PROGRAM (CXP)

22 SDSA AWARDS BANQUET & UPDATES TO GROWTH TRAIT PREDICTIONS

26 SOUTH DAKOTA SIMMENTAL ASSOCIATION STEER & HEIFER FUTURITY ENTRY FORM

27 ASA ANNUAL MEETING & DENVER SCENES

28 SOUTH DAKOTA JUNIOR SIMMENTAL ASSOCIATION NEWS

34 CALENDAR OF EVENTS
AD INDEX



NDSA COMMERCIAL CATTLEMAN THANK YOU

We would like to thank the North Dakota Simmental Association for selecting us as the 2019 Commercial Cattlemen of the year. We feel very honored and humbled to have received this award. It has been very enjoyable raising simmental cattle as they have added so much profitability to our herd. I look forward to visiting with all the producers at the upcoming bull sales and wish everyone a successful calving season.

- Thank you, Oscar and Gloria Kleven.

OFFERING REGISTERED
ANGUS, RED ANGUS
& SIMMENTAL BULLS



Raml Cattle

ANNUAL BULL SALE

SUNDAY, FEBRUARY 23, 2020

2 PM CST • AT THE RANCH • GOODWIN, SD



RAMLOCK DOWN 9793G

CE 7 / BW -0.1 / WW 73 / YW 113
1/2 SM 1/2 AN



RAMLOCK DOWN 9696G

CE 14 / BW -1.6 / WW 62 / YW 100
1/4 SM 3/4 AN



RAMTURNPIKE 937G

CE 13 / BW 3.4 / WW 85 / YW 131
3/4 SM 1/4 AN



RAMLEAGLE 9693G

CE 16 / BW -0.9 / WW 75 / YW 111
5/8 SM 3/8 AR



RAMCADILLAC 9607G

CE 11 / BW 0.1 / WW 81 / YW 126
5/8 SM 3/8 AR



RAMCADILLAC 9679G

CE 13 / BW 0.5 / WW 80 / YW 118
3/4 SM 1/4 AR

Raml

CATTLE

46626 170th Street • Goodwin, SD 57238

PHIL. 605-881-0700 ADAM. 605-881-0720

GRANT. 605-881-9195 EMAIL. ramlcattle@hotmail.com

PHOTOS, VIDEOS AND DIGITAL CATALOG AVAILABLE AT

Ramlcattle.com

ALL BULLS IN THE SALE
WILL HAVE ISOX DATA.

zoetis **iSOX**

ONLINE VIEWING &
BIDDING PROVIDED BY:

DVAuction
Broadcasting Real-Time Auctions

14TH ANNUAL SALE

C DIAMOND SIMMENTALS

85 YEARLING BULLS – RED & BLACK

FEBRUARY 26, 2020

Visitors Receive
\$100 credit

1PM CST C DIAMOND RANCH DAWSON ND

Volume Discounts
Available



CDI 556G Homo Polled PB SM
CDI 49er 257D x CDI Miss Hometown 87E
CE BW WW YW MCE MM MARB REA
16 -0.9 73 105 9 27 0.27 1.15
ASA# 3651424 API 148 TI 83



CDI 256G Homo Polled PB SM
CDI 49er 257D x CDI Miss Prime Time 110E
CE BW WW YW MCE MM MARB REA
15 -0.4 72 106 8 32 0.46 1.20
ASA# 3651099 API 165 TI 87



CDI 304G Homo Polled PB SM
CDI Revival 370D x CDI Ms Xpectation 122A
CE BW WW YW MCE MM MARB REA
3 5.4 91 135 -0.1 24 0.15 1.11
ASA# 3651195 API 126 TI 81



CDI 261G Homo Polled Homo Black PB SM
CDI Revival 370D x CDI Ms Cowboy Cut 625D
CE BW WW YW MCE MM MARB REA
4 4.2 94 136 0.2 26 0.17 1.09
ASA# 3651108 API 120 TI 80



CDI 341G Homo Polled PB SM
LCDR/CDI Fierce 81E x CDI Ms Inception 123B
CE BW WW YW MCE MM MARB REA
4 3.7 81 121 3 25 0.27 0.98
ASA# 3651212 API 135 TI 80



CDI 285G Homo Polled Homo Black PB SM
CDI Mainline 265D x CDI Miss Fortified 147C
CE BW WW YW MCE MM MARB REA
13 0.4 76 118 7 28 0.26 0.86
ASA# 3651151 API 146 TI 78



CDI 272G Homo Polled 3/4 SM
CDI Freight Train 230E x CDI Miss Hometown 115C
CE BW WW YW MCE MM MARB REA
8 3.2 89 134 5 22 0.36 0.77
ASA# 3651129 API 133 TI 83



CDI 381G Homo Polled Homo Black 3/4 SM
TJ Main Event 503B x CDI Miss Fortified 72C
CE BW WW YW MCE MM MARB REA
14 0.3 79 119 7 29 0.24 1.06
ASA# 3651332 API 137 TI 79



CDI 252G Homo Polled PB SM
CDI Perception 254E x CDI Miss Prime Time 43E
CE BW WW YW MCE MM MARB REA
15 -2.0 69 103 9 27 0.22 0.87
ASA# 3651087 API 155 TI 80

This sale will be broadcast live on the internet.
DVAuction
Broadcasting Real-Time Auctions
Real time bidding & proxy bidding available.

Neil Nicholson Family

701.391.6205

cdiamond@bektel.com

C Diamond Simmentals

4720 34th Ave SE Dawson ND 58428

Wesley & Kelsey

701.391.2838

EPDS as of 1.7.2020

ALLIED
GENETIC RESOURCES

Marty Ropp | 406.581.7835

mropp@alliedgeneticresources.com

Doll Simmental Ranch



DCR Mr Exclusive G40

ASA# 3636282
 BD: 2.8.19 BW: 83 lbs.
 Adj. 205 WT: 871 lbs. WWR: 109
 Adj. 365 WT: 1,475 lbs. YWR: 106
 Sire: DCR Mr Exclusive E28
 Dam: DCR Ms. Liner E327

CE	BW	WW	YW
9	1.3	82	128

MCE	Milk	MWW	CW
6	26	67	58

MB	REA	SAPI	STI
-.09	.95	122	76



DCR Mr Decided G160

ASA# 3636268
 BD: 2.23.19 BW: 90 lbs.
 Adj. 205 WT: 818 lbs. WWR: 99
 Adj. 365 WT: 1,515 lbs. YWR: 109
 Sire: WBF Decided D095
 Dam: DCR Ms. Game-Face D347

CE	BW	WW	YW
9	2.2	70	106

MCE	Milk	MWW	CW
6	26	61	43.3

MB	REA	SAPI	STI
.14	.94	134	73



DCR Mr Red Granite G344

ASA# 3636241
 BD: 3.11.19 BW: 100 lbs.
 Adj. 205 WT: 938 lbs. WWR: 114
 Adj. 365 WT: 1,400 lbs. YWR: 101
 Sire: ASM Wideload 303B
 Dam: DCR Ms Westway B531

CE	BW	WW	YW
4	3.6	83	122

MCE	Milk	MWW	CW
5	22	64	41.5

MB	REA	SAPI	STI
-.18	1.02	117	70



DCR Mr Wide Load G287

ASA# 3636246
 BD: 3.7.19 BW: 96 lbs.
 Adj. 205 WT: 826 lbs. WWR: 100
 Adj. 365 WT: 1,442 lbs. YWR: 104
 Sire: ASM Wideload 303B
 Dam: DCR Ms. BL Caesar W204

CE	BW	WW	YW
3	3.4	76	111

MCE	Milk	MWW	CW
5	24	62	47.2

MB	REA	SAPI	STI
-.12	1.08	109	67

*Raising Simmental since
 1968, Charolais since 1958.
 We would like to thank
 our new and returning
 customers.*



DCR Mr Galaxy Red G110

ASA# 3636274
 BD: 2.18.19 BW: 92 lbs.
 Adj. 205 WT: 949 lbs. WWR: 115
 Adj. 365 WT: 1,672 lbs. YWR: 121
 Sire: WBF Decided D095
 Dam: DCR Ms Game-Face D527

CE	BW	WW	YW
9	3	81	123

MCE	Milk	MWW	CW
6	28	69	44.9

MB	REA	SAPI	STI
.01	.86	131	76



DCR Mr Denali G199

ASA# 3636257
 BD: 2.27.19 BW: 83 lbs.
 Adj. 205 WT: 885 lbs. WWR: 107
 Adj. 365 WT: 1,472 lbs. YWR: 106
 Sire: Springcreek Denali 21E
 Dam: WS Heartbeat D215

CE	BW	WW	YW
9	1.2	76	110

MCE	Milk	MWW	CW
7	31	68	38.8

MB	REA	SAPI	STI
.20	.85	136	79



DCR Mr Gizzmo Red G380

ASA# 3636229
 BD: 3.14.19 BW: 92 lbs.
 Adj. 205 WT: 911 lbs. WWR: 111
 Adj. 365 WT: 1,515 lbs. YWR: 109
 Sire: RFS Bulletproof B42
 Dam: DCR Ms. Game Face C103

CE	BW	WW	YW
8	2.4	84	125

MCE	Milk	MWW	CW
6	26	68	50

MB	REA	SAPI	STI
.09	1.03	132	80

EPDs as of 1.13.20

40th Annual
 Production Sale
**Tuesday,
 March 3, 2020**

1:30 p.m. CST

Kist Livestock, Mandan, ND

*Selling Top-Genetics
 for Both Breeds!*

65 Spring Simmental Bulls
 average 205WT of 815 lbs.

100 Spring Charolais Bulls
 average 205WT of 810 lbs.

6 Open Simmental Heifers

6 Open Charolais Heifers

Herd Sires:

CLRS Domino 875D
 TT Red Zone 031C
 DCR Mr Explorer E341
 ERIXON Game Face 59Y
 WLB Bull 223W 391A
 Springcreek Denali 21E

AI Sires:

DCR Mr Eye Opener
 DCR Mr Exclusive E28
 DCR Mr Everglade E118
 DCR Mr Main Attraction E18
 DCR Mr West River D12
 DCR Mr Moon Shine X102
 ES Ridge Rider YW3
 Kuntz Sherriff 8A
 WS Beef Maker R13
 Hooks Black Hawk 50B
 WS All Aboard B80
 RFS Bulletproof B42
 Colorado Bridle Bit E752
 CCR Wide Range 9005A
 GIBBS Element 3009A
 IPU Red Deputy 25C

Doll

Simmental Ranch

3991 36th St.
 New Salem, ND 58563

Charles & Pamela Doll
 701-843-8673

dollboyz@westriv.com
 Harlan & Jodie Doll
 701-843-8771

David & Donna Doll
 701-843-7947

dollfarm@westriv.com

www.dollranch.net

Double Bar D Farms

20TH ANNUAL

BEST OF BOTH *Worlds* BULL SALE

Tuesday
MARCH 3, 2020
GRENFELL, SASKATCHEWAN

140+
BULLS TO SELL!

- FLECKVIEH
- RED AND BLACK PUREBRED SIMMENTAL
- RED AND BLACK PERCENTAGE
- SIM ANGUS

DOUBLE BAR D *Chandler* 316

Double Bar D Chandler 153D
x MFI Foundation 7094 daughter



DOUBLE BAR D *Chandler* 396

Double Bar D Chandler 153D
x Double Bar D Baxter 606Z daughter



Polled

DOUBLE BAR D *Ironman* 766

Ironman
x Damian Star Eldandi daughter





DOUBLE BAR D CM 437G

Captain Morgan x JF American Pride daughter



DOUBLE BAR D TURNPIKE 479G

Ruby's Turnpike x
WLB Obsidian Black daughter

Age Advantage



DOUBLE BAR D LM 753F

Law Maker x
WLB Obsidian Black 391Y daughter

Age Advantage



RLD 804F

Bankroll x KN CNS Dream On L186 daughter

RANCH READY

Yearling & Age Advantaged Bulls



DOUBLE BAR D CAPTIVE 402G

Double Bar D Captive 446C x Double Bar D Royal 526B daughter

POWERFUL &
PREDICTABLE
WITH *Industry*
LEADING
Genetics



DOUBLE BAR D BANKROLL 412G

W/C Bankroll x Wheatland Circuit Breaker daughter

Age Advantage



DOUBLE BAR D BIG RED 822F

Big Red x
Double Bar D Gunner daughter

Sale Managed By



T Bar C Cattle Co. Ltd.
Box 2330, Warman, SK S0K 4S0
306.933.4200
info@tbarc.com



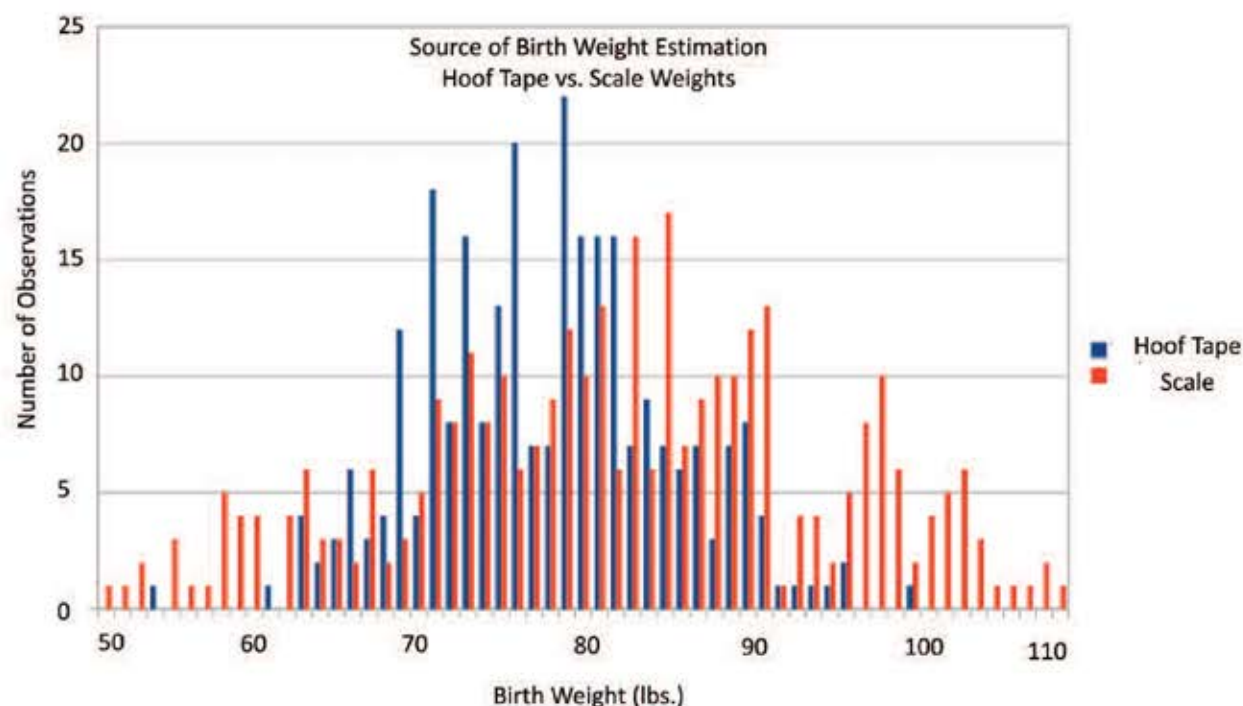
Double Bar D Farms
Box 580, Grenfell, SK S0G 2B0
Ken Dimler: 306.697.7204
kenshou@yourlink.ca
www.doublebardfarms.com

THANK YOU
TO EVERYONE
WHO SUPPORTED US
IN 2019!

Internet Bidding Available

DLMS
www.dlms.ca

For more information call DLMS:
Mark Shologan 780.699.5082 or
DLMS Purebred Team 780.991.3025



BIRTH WEIGHT UPDATE FOR THE APPROACHING CALVING SEASON

Research study finds hoof tape correlates highly to scale weights but exhibits less variation.

By Jackie Atkins, Ph.D., Director of Science and Education

There has long been a stigma against using hoof circumference for estimating birth weight; however, there are pragmatic reasons why hoof tape is a sound alternative. Collecting scale weights at birth can be difficult for breeders due to labor constraints. It is known that some breeders are using hoof tape to estimate birth weight. Recently, IGS and consulting scientists, Drs. Bruce Golden and Matt Spangler, delved into a number of potential improvements to the genetic evaluation of growth traits including how to handle hoof tape records as a measure of birth weight in genetic evaluation.

Dr. Golden started looking at large numbers of records from herds known to use hoof tape or known to use scale weights. Golden used over 7,000 hoof tape records and 15,000 scale weight records and found hoof tape and scale weights have a high genetic correlation (0.92). As expected, hoof tape estimates for birth weight had less variation in the records resulting in hoof tape measurements with fewer extremely light or heavy birth weight estimates compared to scale weights (see graph).

What does this mean for seedstock breeders?

Scale weights remain a gold standard for birth weight measurements. However, hoof tape measurements look like a very reasonable alternative. The Beef Improvement Federation recently came out with the following statement. "BIF recommends that organizations responsible for recording performance data require breeders who use a hoof tape to record birth weight to indicate that they have done so."

Remember, with both measurements, the economically relevant trait is Calving Ease. The genetic correlation between hoof tape measurements and calving ease is not yet known but given the high correlation to scale weights, it is likely to be similar to the correlation between birth weight and calving ease.

As a reminder, for ALL phenotypic records, if animal measurements are missed for any reason, it is far better to leave the records blank than to fill in the blanks with guesses. Inaccurate records introduce noise to the genetic prediction that reduces the ability to assess the genetic merit of these and related animals.

Stay tuned for more updates on other improvements in the growth traits predictions in the IGS Multi-breed Genetic Evaluation.

"The key for success is for the same person to do the measuring with the same tension on the tape every time. When it is cold, it is important to make sure the feet are not swollen when you measure them. Consistency is the key," says Jim Butcher, Lewiston, MT, Gateway Simmentals and long-time user of hoof tapes.

Tips when using a hoof tape:

1. Measurements should be collected within 24 hours of birth.
2. Place the tape around the coronary band (where the hoof meets the hide) of a front hoof, tighten, and read the measurement.
3. There are two sides to the tape. One for bull calves and one for heifers.
4. Use the same method for ALL calves in a management group. Avoid collecting some weights with a scale and some with a hoof tape.
5. When turning in birth records to your association, if possible indicate if measurements are from a scale or hoof tape.

Published with permission from the American Simmental Association.

Look for updates, pictures and videos of our 2020 sale offering on our website!
WWW.WILKINSONFARMSSIMMENTALS.COM

BREEDING FOR THE FUTURE

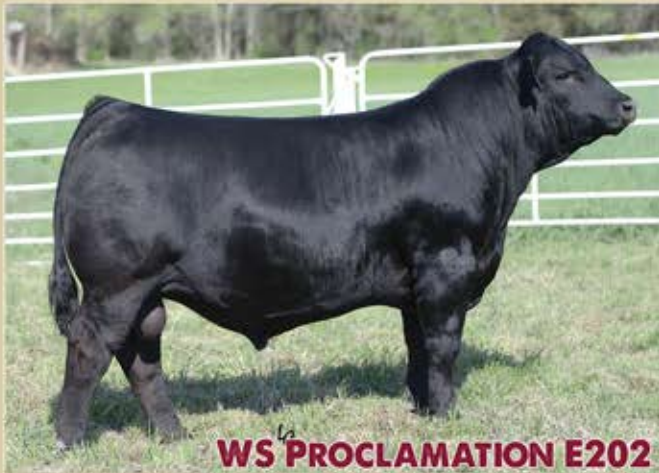
SELLING
60 Polled
Simmental Bulls

**NEW
SALE
DATE!!**

22ND ANNUAL PRODUCTION SALE

MONDAY, MARCH 16TH, 2020 - 1PM

SALE LOCATION >>> CB SALE FACILITY 4 miles south of our ranch on 76th Ave, SE.



WS PROCLAMATION E202

Tremendous big time spread bull. Top 2% CE and top 1% WW & YW. 12 traits in the top 5% of the breed. Several sons selling! Semen available.



KBHR SNIPER E036

A true calving ease specialist. Impressive -4.0 BW to 107 YW EPDs. First sons sell in this year's sale! Semen available.

PRIVATE TREATY BRED HEIFERS

SELLING 30 BRED HEIFERS

to start calving March 1st.

Carrying the services of
WS Proclamation, KBHR Sniper,
WS All Aboard, WS Outcross and more.



HEIFERS LIKE THIS AVAILABLE IN THE OFFERING!



Wilkinson Farms Simmentals

Terry & Cathy Schlenker Family
Montpelier, ND 58472 • 701-489-3583
Aaron Cell: 701-269-8271 - Terry Cell: 701-320-2171

ALLIED
GENETIC RESOURCES
Marty Ropp - 406-581-7835
www.alliedgeneticresources.com

This sale will be broadcast live on the internet.
DVAuction
Broadcasting Real-Time Auctions
Real time bidding & proxy bidding available.
For questions contact Justin Duff at (910) 290-0031 - jduff@dvauction.com



NORTH DAKOTA SIMMENTAL ASSOCIATION YOUTH SCHOLARSHIPS

ND SIMMENTAL SCENE SCHOLARSHIP APPLICATION

The ND Simmental Association board will award one \$1,000 scholarship to a 2020 high school graduate or a 2020 college freshman. Applicants must be enrolled in a two or four year post high school educational program in the fall of 2020. Furthermore, applicants must be pursuing a degree in an agricultural program. Preference will be given to applicants that have a livestock background that includes the use of Simmental genetics. Return application to NDSA

Attn: Kim Myers 12066 57 St SE Kathryn ND 58049 by March 15, 2020.

To download the application please go to www.northdakotasimmental.com

NORTH DAKOTA SIMMENTAL ASSOCIATION SCHOLARSHIP APPLICATION

The North Dakota Simmental Association will award one \$500 scholarship to a 2020 high school graduate or a 2020 college freshman. Applicants must be enrolled in a two or four year post high school educational program in the fall of 2020. Furthermore, applicants must be pursuing a degree in an agricultural program. Preference will be given to applicants that have a livestock background that includes the use of Simmental genetics.

Send Completed Application with a photo by March 15, 2020 to:

Kim Myers 12066 57th St SE Kathryn, ND 58049

To download the application please go to www.northdakotasimmental.com

7th Annual ASA Fall Focus

Mark Your Calendar!

August 28 - September 1, 2020 • Roanoke, Virginia

Friday, August 28

Tours of local seedstock operations, Virginia Tech, and dinner hosted by Virginia Simmental Association

Saturday, August 29

Educational Symposium

Sunday, August 30 - Tuesday, September 1

Board Meetings

Hotel Headquarters:

Hotel Roanoke, Roanoke, VA

Co-hosted by

*Virginia Simmental
Association*

www.virgini asimmental.com

SimGenetics

PROFIT THROUGH SCIENCE

American Simmental Association

www.simmental.org

Ashworth

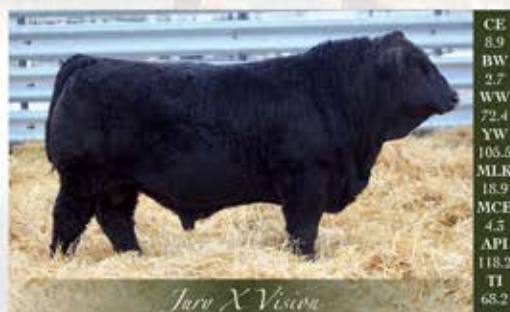
Farm & Ranch Ltd.

17TH ANNUAL BULL SALE

Monday March 9th, 2020

1:00 PM • ON THE FARM • OUNGRE SK, CANADA

Offering 90 Simmental & SimAngus Yearling Bulls



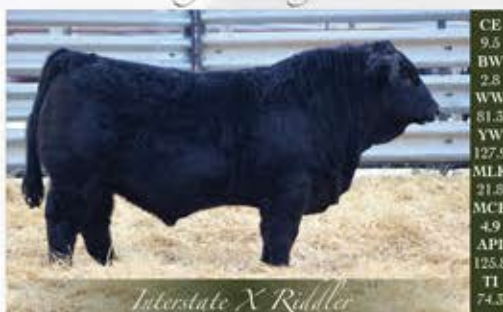
CE 8.9
BW 2.7
WW 72.4
YW 105.3
MLK 18.9
MCE 4.5
API 118.2
TI 68.2

Juv X Vision



CE 12.4
BW 1.3
WW 70.9
YW 110.7
MLK 25.1
MCE 6.4
API 126.1
TI 69.0

Interstate X Limited



CE 9.5
BW 2.8
WW 81.5
YW 127.9
MLK 21.5
MCE 4.9
API 125.8
TI 74.5

Interstate X Riddler



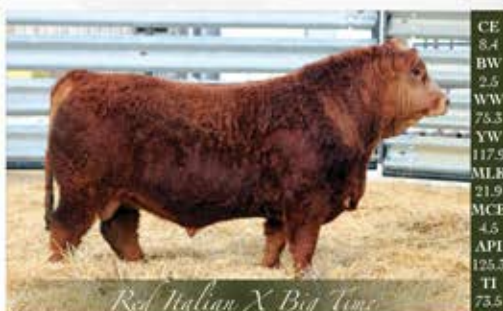
CE 7.1
BW 4.0
WW 79.7
YW 120.3
MLK 19.9
MCE 2.8
API 119.5
TI 70.2

Authority X Red Whiskey



CE 4.8
BW 3.7
WW 83.0
YW 129.1
MLK 21.7
MCE 1.8
API 132.0
TI 75.7

Authority X Red Rock



CE 8.4
BW 2.5
WW 75.3
YW 117.9
MLK 21.9
MCE 4.5
API 125.3
TI 73.5

Red Italian X Big Time



CE 12.4
BW 1.1
WW 63.5
YW 86.1
MLK 22.5
MCE 6.6
API 126.6
TI 67.9

Buckroll X Circuit Breaker



CE 6.9
BW 2.8
WW 61.1
YW 91.2
MLK 22.3
MCE 4.6
API 115.9
TI 60.7

Juv X Smokehouse



CE 17.0
BW 0.7
WW 60.1
YW 87.6
MLK 31.2
MCE 8.7
API 146.0
TI 71.0

Vegas X Red Mountain



CE 8.5
BW 1.4
WW 64.9
YW 98.6
MLK 31.6
MCE 5.9
API 133.5
TI 69.5

SSE X Red Rock



CE 8.0
BW 2.4
WW 63.5
YW 90.8
MLK 21.4
MCE 4.4
API 121.0
TI 68.1

Alliance X Red Western



CE 7.3
BW 3.0
WW 74.5
YW 114.8
MLK 25.4
MCE 5.2
API 129.5
TI 73.5

Exclusive X Red Mountain

The Ashworths

PO Box 53 OUNGRE, SASKATCHEWAN, CANADA S0C 1Z0
KELLY: 306 861-2013 • KYLE: 306 861-9352

Direct Livestock Marketing System
DLMS
www.dlms.ca

SD SimmenTeller & ND Simmental Scene | 11

TSN Simmentals

Annual Sale THURSDAY, April 9th

Sale Location- Platte Livestock Market

Sale Time- 1:00 P.M.

Selling 40 Registered Simmental and SimAngus™ Bulls

Reference Sires

TSN Protege Z896

****New Sale****
Date



HOOK'S EAGLE 6E

J BAR J NIGHTRIDE 225Z



TSN Simmentals

Tim, Sandy, and Sawyer
27005 360th Ave. Platte, SD 57369

(605)337-3503

Tim's Cell- (605)207-0229

www.tsnsimmentals.com

Quality
that can't be disputed...

Monday, March 9, 2020 :: 1:00 pm

Winnipeg Livestock Sales, Winnipeg, Manitoba

PROUDLY PRESENTED BY

DEQUIER CATTLE CO. (204-745-8750)

SKYRIDGE FARMS (204-750-2210)

TWIN MEADOW LIVESTOCK (204-723-2386)

TWIN OAK LIVESTOCK (204-723-2275)

WILCOX SIMMENTAL (204-723-2735)

JAYMARANDY LIVESTOCK (204-281-5099)

WILD WEST ANGUS (204-304-1750)

WILCOX LIVESTOCK (204-750-1658)

CANADIAN CENTRAL *Bull & Female Sale*



Selling
45

Simmental & Black Angus Yearlings & Two Year Old Bulls Plus Purebred & Commercial Heifers

Sale Managed By



T Bar C Cattle Co. Ltd.
Chris Poley: 306-220-5006
Shane Michelson: 403-363-9973
Ben Wright: 519-374-3334

Internet Bidding Available

DLMS
www.dlms.ca

For more information call DLMS:
Mark Shologan 780.699.5082 or
DLMS Purebred Team 780.991.3025

VIEW THE CATALOGUE ONLINE
WWW.BUYAGRO.COM



CARCASS EXPANSION PROGRAM (CXP)

SIMMENTAL PROJECT TO ACCELERATE CARCASS SELECTION

US cattlemen and women have successfully improved beef quality during the last several decades, yet capturing widespread carcass data proves elusive. The most important traits are still among the most difficult to predict.

A large-scale project from the American Simmental Association (ASA) aims to change some of that - and arm ranchers with more accurate decision-making tools.

"Over time, we've leveraged new technologies like ultrasound to help bolster information about end product attributes into our genetic evaluation systems. However, as we look at different breeds, on average, between half and one percent reporting rate of the number of calves born every year make it into our carcass data evaluation," says Dr. Bob Weaber of Kansas State University. "Carcass data is an area that's expensive to measure, but we know it's very important. All of the new dollars that come into the beef business come from somebody buying a piece of beef."

That's why the ASA recently launched an expansive new project that pairs actual carcass records with genomic data on sire-identified calves. The Carcass Expansion Project aims to boost total carcass records and to train genomic panels to more accurately predict carcass traits.

Rancher Tracy Brunner of Cow Camp Ranch near Ramona, KS, is a participant and says the project has merit for all producers.

"This is not about just gathering carcass data. It's not just a win for the individual animal owner. It benefits the cattle that are available to our consumer, industry-wide," Brunner says. "All the information that we gather will develop better and more accurate EPDs that will lead to better consumer products."

ASA's Board of Trustees invested significantly toward the five-year project, open to seedstock members and their commercial customers with SimGenetic influence.

"We focus our efforts and data collection, in this case, on a relatively large group of animals, of 20,000, and extract lots of information out of that exercise. Then the genomics tools will allow us to spread that information across the entire pedigree. So producers that aren't directly engaged in feeding cattle benefit from the project because they'll be able to use a genomics tool," Weaber says.

For the genomic component, the Association plans to pay genotyping costs associated with the use of tissue-sampling units (TSU) provided through Allflex.

"Obviously, carcass data is one of the hardest things to get because not everybody is willing

to share it and because it's very expensive to just get carcass data," says Scott Holt, North American marketing manager for Allflex. "Our ability now to get that carcass information through genomics is a really exciting phase in our industry."

"Through the gathering of carcass data and tying that back to the origin of the genetics of those animals, we're able to increase the predictability. We're able to increase the accuracy of expected progeny differences," Brunner says. "Whereas a non-enhanced EPD may have an accuracy rate of 30% to 40%, we can improve that possibly 10% to 20% by adding carcass information to that EPD foundation."

"To me, it's about breeding better cattle to raise better beef."

Seedstock members or commercial producers wanting to learn more read the Fact sheet at, <http://www.simangus.us/pdf/programs/Carcass%20Expansion.pdf>, or contact the Association at 406-587-4531.

Published with permission from the American Simmental Association.



First Defense®

**SCOURS PREVENTATIVES
FOR CALF HEROES**

Targeted. Effective.

GUARANTEED

The only scours preventative
with *guaranteed* levels of
immediate immunity



Rotavirus



Coronavirus



K99+ *E. coli*



Coronavirus



K99+ *E. coli*

NASDAQ: ICCG

FirstDefenseCalfHealth.com

800.466.8235

Find us on



MRL ^{26th} Annual Bull Sale

Saturday, March 7, 2020
At the Ranch • Carievale, Sask
(just 18 miles North of Sherwood, ND)

160 Bulls Sell

60 Purebred Red Polled Simmental Bulls
60 Purebred Black Polled Simmental Bulls
45 Registered Red and Black Angus Bulls
45 Age Advantage May born coming
two year old bulls

The Commercial Cattleman's
"One Stop Bull Shop"
For Elite Simmental & Red Angus Genetics

At MRL we have built a reputation around
supplying Thick Beef Bulls to Commercial
Cattlemen and standing behind them.

Herd bulls packed full of economic and
convenience traits that will accelerate your
breeding program. Managing over 700 mother
cows with limited manpower, these bulls
are raised under ranch conditions similar to
yours, and are developed on a silage-based
ration to ensure soundness and longevity.
Over 40 years of genetic selection with the
commercial cattleman in mind: calving ease,
consistency, natural thickness, maternal values
and carcass traits bred right in. Give us
a call, we would enjoy visiting about your
operation and herd bull needs.

Thank You

to our U.S. buyers for the past several
years. Almost 25% of our bulls have sold to
some of the top breeders and commercial
cattlemen in the Dakotas, Minnesota, and
Nebraska annually. We have the experience
and documentation to get your bulls to your
yard hassle free! Take advantage of the us
dollar with a 25% buying advantage!

**Call today for a sale book,
bull video or more information!**



Sire: Venom

MRL 36G



Sire: Venom

MRL 140G

16 Venom Sons Sell
15 Powerful Venom Sons Sell



Sire: MRL Missile

MRL 105G



Sire: MRL Precision

MRL 16G

Outcross Pedigrees, Powerful Bulls



Sire: 56U x 836W Donor

MRL 165G



Sire: Venom x 836W Donor

MRL 61G

You gotta see this pen of bulls for 2020



Sire: MRLA Red Resource

MRL 93G



Sire: North Face

MRL 185F

50 Coming Two-Year-Olds



Sire: U2 Retrospect

MRL 42G



Sire: MRLA Resource

MRL 121G

Representing 45 Registered Red Angus Bulls



Lee (h) 306-928-4820
(c) 306-483-8067



Dave (c) 306-483-8660



Jim (h) 306-928-4636
(c) 306-483-7986



MRL 89G

Sire: MRL Capone x 55W Donor



MRL 142G

Sire: MRL Missile

15 Stout Missile Sons Sell



MRL 45G

Sire: MRL Missile x 677Y Donor



MRL 83G

Sire: MRL Missile x 677Y Donor

20 ET Sons Out of Our Powerful Donors



MRL 2G

Sire: Hart State of War



MRL 99G

Sire: MRL Missile

Calving Ease + Performance Bulls by the Dozen



MRL 195F

Sire: MRL Missile x 55W Donor



MRL 224F

Sire: MRL Progress

Representing 45 Coming Two-Year-Old Bulls

MRL Herd Bulls designed by Ranchers for Ranchers!

Free Delivery

Come in your car? Just 18 miles
North of Sherwood, ND
We'll drop the bulls off in your yard or
close to it. We have the experience and
documents to get your bulls to your yard
hassle free.

Semen Tested and 100% Guaranteed

Every bull is semen tested satisfactory
before the sale. No surprises on bulls that
don't work after the bull sales are over.

Volume Discounts

We supply the Quality, Quantity, and
Selection to get your Bull Buying Needs
done! 1 Day 1 Sale and save you money.

Affordable

Top Genetics Reasonably priced.

Extra Age Bulls

Our yearlings are January and February
born, as well as a group of May born
Coming 2 Year Old bulls ready to
cover some ground and more cows!

Sight Unseen Buyers Program

We would love for you to join us at the
ranch March 7th for the bull sale; but if
you cannot, this program has worked very
well for busy cattlemen unable to attend
our sale. 20% of our bulls go to satisfied
cattlemen each year, many repeat customers
through our SUS program. It's simple: give
us a call to discuss what you are looking
for in your next herd sire. We know
our cowherd very well and the genetics
strengths of each and every bull offered.
Together we will discuss which bulls will
work best in your operation. We will
personally hand pick and purchase your
bulls for you within and quite often below
your price range. Your next herd bull
purchase is as close as your phone. Please
contact Lee or Dave for more info on the
program.

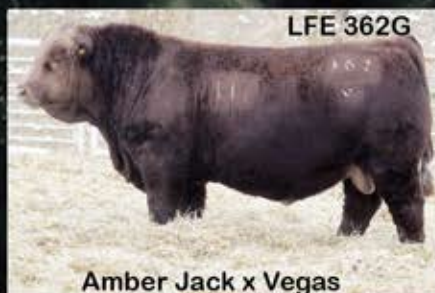
McMillen Ranching Ltd.

Box 99 • Carievale, SK

Lee: 306-928-4820 • Lee Cell: 306-483-8067 • Dave Cell: 306-483-8660

Jim: 306-928-4636 • Jim Cell: 306-483-7986 • Fax: 306-928-2143 • Email: mrl@sasktel.net

35th Annual Bull Sale February 29, 2020



130 Simm. Yearlings
85 Simm. Extra Age
40 Angus Yearlings
40 Angus Extra Age

\$.75 Can. dollar
Huge advantage for
American buyers!

Lewis Farms

Website: www.lewisfarms.ca

Kyle Lewis: 780-220-9188

Ken Lewis: 780-818-3829

Fullblood Division: Mark Land & Cattle, Lenny Mark 780-842-7207

Office Ph.: 780-962-5050

kyle@lewisfarms.ca

Oakview Perkin Triple R

SIMMENTAL BULL SALE

SATURDAY • MARCH 21, 2020 • 2 PM
KEYSTONE CENTRE • BRANDON, MB

Offering 80+ bulls



Todd & Danna Collins
204.242.4522 or 204.823.1434
oakviewsimmentals.com



Rick Dequier - Roland & Yvonne Dequier
Darrel & Jacqueline Warkentin - Janessa Warkentin
204.771.0280 - triplersimmentals.wixsite.com



Darryl & Tanya Perkin
204.769.2159 or 204.534.8137
perkinlandandcattle.com



professionally managed by
TRANSCON
Livestock Corp.
WWW.TRANSCONLIVESTOCK.COM

Jay Good (403) 556-5563
Darren Paget (403) 323-3985
Glenn Norton (780) 542-0634
Cody Haney (403) 559-8809

Fleckvieh Bulls With Beef?

We want to earn your bull business, whether you need one or a trailer load.
The year's calf crop includes five maternal brothers to these bulls.



Call now for best selection so we can reserve your bull needs!

STANLEY MARTINS FARMS

141 Hwy 18
Postville, IA 52162
563-419-2444 (c)
563-864-7305 (h)

Please google stanleymartinsfarms for more information.

We sell bulls every month of the year.
90% of our bulls sell from \$3,000-5,000.



Hereford Bulls • Angus Bulls • Simmental Bulls • Registered & Commercial Females

SATURDAY, MARCH 14, 2020

6:00 p.m. at W.H. Lyon Fairgrounds, Sioux Falls, SD



Relentless female raised by Mark Family Simmental

Sires Represented: CDI Innovator, Hooks Black Hawk, LLSF Pays to Believe, WS All Aboard, SAC Conversation, SAV Sensation, and W/C Fully Loaded.

Request a catalog, see photos and videos of our entire offering at:

www.i29bullrun.com

watch and bid live at:



For details, please contact:

Phil Eggers, Eggers Southview Farms.....605.351.5438
Mark Johnson, Sleepy Hollow Farm.....605.212.2387
Troy Rasmussen, TSR Cattle Co.....605.690.0100
Erik Scott, Section 16 Cattle Co.....605.214.1332
Troy Williamson, Springwater Polled Herefords.....605.254.7875
Andy Mark, Mark Family Simmental.....712-441-5920

EGGERS
Southview Farms

Tim & Philip Eggers
Sioux Falls, SD

SECTION 16
CATTLE CO.

Erik Scott & Family
Canton, SD

S Sleepy Hollow Farm

Mark & Jeanne Johnson
Centerville, SD

SPH
Polled Herefords

Troy Williamson
Garretson, SD

TSR
cattle co

Troy Rasmussen
Elkton, SD

MARK & JANNA
Simmental

Andy & Janna Mark
Viborg, SD

facebook.com/i29bullrun



LaBatte Simmentals

40th Annual Bull & Female Sale
Friday • March 6, 2020 • 1:00 pm

Johnstone Auction Market • Moose Jaw, SK
 Guest Consignor: East Poplar Simmentals

Selling approximately: 70 polled, red, black & Fullblood Simmental Beef Bulls
 plus 15 open, polled, red and black purebred females

2020 SALE BULLS



IPU 32G - Polled Purebred
 Sired by IPU Lieutenant 24E



IPU 58G - Polled Purebred
 Sired by IPU Red Zone 16A



IPU 81G - Polled Purebred
 Sired by IPU Code Red 53Y



IPU 121G - Polled Purebred
 Sired by WFL Avalanche 21E



IPU 35G - Polled Fullblood
 Sired by Black Gold Elevation 20E

LaBatte Simmentals

invite our American neighbors to our 40th annual sale. **Take advantage** of the current **US dollar exchange rate**. As of mid-January, a \$8,000 bull would only cost you \$6,200 in US Funds.

Thank you to our 2019 customers representing US Simmental operations. Your support is appreciated.

Visit our website:
www.LaBatteSimmentals.com
 for our sale bull preview with videos,
 plus a link to our 2020 Sale Catalogue.

There is a bull for everyone at a LaBatte Bull Sale.
This is a powerful group of bulls with quality running deep in all sections. Progressive cattle producers looking to increase performance, depth and thickness can find their new bulls here.

We offer semen tested bulls, with free delivery to central US points with paperwork in order.

Sight unseen purchase program available.

Call Barry to discuss your needs.

Cell: 306-815-7900.

For printed catalogues, email Barry at
labatte.simm@sasktel.net

Sale at Moose Jaw, SK, approximately two hours from Plentywood, MT, or two hours from Estevan, SK.

Online Bidding Available

www.dlms.ca

Mark Shologan 780-699-5082

Sale Day Phones:

Call Barry LaBatte at 306-815-7900

Auction Mart: 306-693-4715

Wilf Davis: 204-841-0211

Barry & Brenda LaBatte

P.O. Box 72, Gladmar, SK S0C 1A0

Cell: 306-815-7900 | Email: labatte.simm@sasktel.net

www.LaBatteSimmentals.com

2020 SALE BULLS



IPU 95G - Polled Purebred
 Sired by Springcreek Liner 56U



IPU 82G - Polled Purebred
 Sired by Springcreek Liner 56U



IPU 15G - Polled Purebred
 Sired by Springcreek Denali 21E



IPU 3G - Polled Purebred
 Sired by WHF Limitless BO11



IPU 13G - Polled Purebred Heifer
 Sired by MRK Priority 3C

SOUTH DAKOTA SIMMENTAL ASSOCIATION AWARDS BANQUET



(1) SDSA breeder of the year was awarded to the Jim Benda Family of Kimball, SD (2) Thank you to Martin Trudeau Insurance for your donation of \$5000 to our SDJSA (3) SDSA promoter of the year Gayle Filipek, Raymond, SD (4) Tessa Pederson, Sherman, SD \$500 scholarship winner (5) SDSA heifer grant recipients-L to R Dusty Rose, Austin Rose, Madison Dragt and Ryder Olsen. Other winners not present. Brady Beitelspacher, Chesney Fuks, Emmalee Scott, Alyssa Scott, Charlie Cody, and Bennett Talsma

UPDATES TO GROWTH TRAIT PREDICTIONS

Jackie Atkins Ph.D., Matt Spangler Ph.D., Bruce Golden Ph.D., and Wade Shafer Ph.D.

The genetic evaluation is constantly evolving with updates to models as new science is discovered and new technologies are available. One area under recent scrutiny is the prediction of growth traits (birth, weaning, and yearling weights, and milk). The IGS Genetic Evaluation Science Team is investigating the following five areas of potential improvement in the prediction of growth traits.

The goal of each of these changes is to improve the prediction of growth traits. Breeders and IGS partners should expect to see the implementation of improvements to growth trait prediction in the approaching months.

1. A new definition of contemporary group based on the age of the dam. Regardless of how users designate contemporary groups, the science team is considering placing all calves born from first-calf dams into separate contemporary groups (CG) from calves out of mature cows. Given the vast majority of producers actually manage this age group separately, it is reasonable to define their calves as their own CG. Handling these as separate CG is a valid way to reduce the environmental noise caused by different management strategies for this age group.

2. Setting the genetic correlation between weaning weight maternal (milk) and weaning weight direct to 0 (compared to -0.3). The magnitude, and even direction, of the correlation between weaning weight direct and milk has been long debated in scientific circles. In fact, there is a wide range of estimates that exist in the scientific literature. Given that, the science team feels the appropriate way to model these traits is to assume they are independent (i.e., genetic correlation of 0). We expect the impact of this change to be greatest for low accuracy animals.

3. Different variances for different sexes (heterogeneous variance). Males usually have a higher growth potential than females simply due to gender. As a consequence, the variation associated with their weights also tend to be greater. This difference in the amount of variation between the sexes should be accounted for in genetic predictions. The IGS team is testing the validity of setting the variance of growth EPDs on a male base.

4. New DNA Marker subset. As the number of genotyped animals has increased, so has our ability to estimate marker effects and identify subsets that are more predictive. Relative to growth traits, a new (and larger) subset of markers has been identified to add more accuracy to EPD.

5. Accounting for different birth weight collection methods. When the IGS Science Team began looking into growth trait data, we discovered that not all birth weight CG followed expected amounts of variation in the weights. In some cases, weights are rounded to the nearest 2 lb increment or 5 lb increment. In other cases, the amount of variation was substantially reduced due to the use of hoof tapes (see the December 2019/January 2020 issue of the Register for more information on hoof tapes). There were also cases where the reported weights were clearly fabricated (for instance, all calves weighed 75 lb). Some of these data are useful, but they are clearly on a different scale and need to be treated appropriately. Dr. Bruce Golden developed a way to use machine learning to recognize unique features of each class of birth weight observation and predict how it was generated (e.g., scale weights, hoof tape, rounding, fabricated). By accounting for the various categories, the genetic evaluation is still able to use the records submitted that fall out of biological expectations for most scenarios, while more accurately accounting for different practices of collecting the weights.

Published with permission from the American Simmental Association. Correlating graphs on this story can be found in the February 2020 issue of the Register or online at, <https://tinyurl.com/growthtrait>

7N SIMMENTAL RANCH

"Representing More Than 50 Years of Genetic Selection for the Total Package of Superior Qualities in Beef Cattle Usefulness"

Join us for our

41st

Annual Production Sale

MAY 5, 2020

At the ranch

12 miles SW of Medina, ND

Sale starts at 4:30 pm Central

NEW SALE DATE

Offering:

*Red & Black
Simmental
& Red Angus*

Selling

*60 Yearling Bulls &
60 Commercial Heifers*

SIMMENTAL SIRES REPRESENTED:

7N Gladiator
TNT Tanker
Red Moon



Purebred Simmental



Simmental-Red Angus

RED ANGUS SIRES REPRESENTED:

DLC Chicawa
FR Endorse
FR Epic
FR Red Patriot



Simmental-Red Angus



Purebred Red Angus

Free Bull Keep & Delivery Until Mid-May • Bulls will be Semen Tested before sale day

Carcass & Performance Data Available

All Successful Bull Buyers Eligible for Free Heifer Raffle Following the Sale

First breeding season all guarantee

7N SIMMENTAL RANCH

Visit our Website: www.7nsimmentalranch.com

Arlyn & Sourey Schmidt

4850 41st Street SE, Medina, ND 58467

701-486-3420 • Visitors welcome!

Doug Schmidt

701-269-9321

doug@7nsimmentalranch.com

SOUTH DAKOTA SIMMENTAL ASSOCIATION

STEER & HEIFER FUTURITY ENTRY FORM

Steer _____

Heifer _____

Name of Seller/Ranch/Farm: _____

Name of Buyer/Jr. Member: _____

Address of Buyer: _____

City, State, Zip: _____

Email Address: _____ Phone # _____

Which sale purchased at: _____

Name of Animal: _____ Animal Birth Date: _____

Tattoo: _____ Registration# _____ % _____

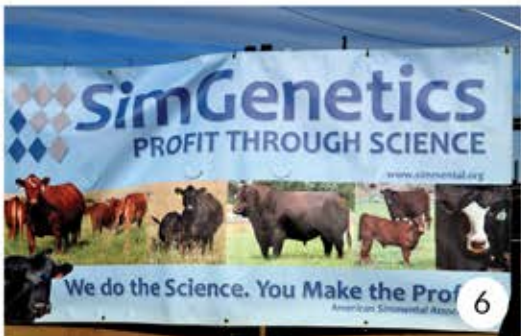
Sire: _____ Dam _____

Please include with form: \$40 entry fee & copy of registration paper

Send entries to: Clay Duxbury 19640 367th Ave St. Lawrence, SD 57373

Futurity Rules

1. Seller must be a member of the South Dakota Simmental Association
2. Junior must be a member of the South Dakota Junior Simmental Association
3. Futurity heifers or steers cannot be sold to immediate family members
4. Futurity animals must be shown by the SDJSA member who purchased the animal or a member of their immediate family
5. Heifers & Steers must be registered with the American Simmental Association as half-blood or greater Simmental. Registration paper must accompany entry form
6. \$40 non-refundable entry fee must accompany entry form. Entry fee can be split with the buyer or whatever agreement they come to
7. All entry fees plus added prize money will be awarded at the Futurity Show (both heifers & steers) which is held during the SD Summer Spotlight
8. Classes will be determined at the show
9. Heifers or Steers must be purchased at one of the following state sanctioned sales: SD State Simmental Source Sale, Sioux Empire Farm Show, Black Hills Stock Show, or the Watertown Winter Farm Show
10. Heifers & Steers must be entered at the sale in which they were purchased
11. Steers may be purchased by private treaty or at a state sale as long as the seller is a member of the SD Simmental Association
12. Deadline is March 31
13. Committee has the right to blood type any animal entered and can withhold any and all prize money until blood type has cleared. Blood typing will be done at the owner's expense



(1) The newly inducted 2020 ASA board members, including Steve Eichacker of South Dakota, with previous chairman, Gordon Hodges (far left). (2) Gordon Hodges recognizes Erika Kenner for her two terms of service on the ASA board. (3) New material promoting SimGenetics were found in the yards during Denver, apart of the ASA's "Simmental Strong" campaign. (4) Steve Eichacker presents Doug Parke of Kentucky, the prestigious World Simmental Fleckvieh Federation's Golden Book Award. (5) ASA Staff members in the yards during the ASA meet and greet event, Jim Largess, Cindy Nuell and Sheldon Ross. (6) Promotion of SimGenetics during the NWSS in the yards. (7) ASA's meet and greet social in the yards. (8) South Dakota member, Cathy Eichacker visits with another member at the social.

THE AMERICAN SIMMENTAL ASSOCIATION'S 52ND ANNUAL MEETING AND CHAIRMAN'S RECEPTION

Bozeman, MT - More than 225 Simmental and SimGenetic enthusiasts attended ASA's 52nd Annual Meeting and Chairman's Reception in conjunction with the National Western Stock Show (NWSS), Denver, CO, January 16-19, 2020.

The ASA Board of Trustees met January 16-18 in connection with Simmental activities at the NWSS. ASA's Annual Meeting highlighted each committee's minutes for the previous year, most notably, the increase in female phenotypes into the IGS Genetic Evaluation from the Cow Herd DNA Roundup project, restructuring of the National Classic support, financial support for the five major shows, and the continuation of the Simbrah-SimGenetic Summit.

During the annual Chairman's Reception on Sunday, January 19, Tim Curran, Lone, CA, was formally seated as Chairman of the Board, succeeding Gordon Hodges, Hamptonville, NC. Also seated were Vice-Chairman Randy Moody, New Market, AL, and Treasurer JW Brune, Overbrook, KS. Rounding out ASA's five-member Executive Committee are Fred Schuetze, Granbury, TX, and Steve Eichacker, Salem, SD.

Elected to the ASA Board of Trustees were Kent Brunner, Lost Springs, KS; former Trustee Barry Wesner, Chalmers, IN; and re-elected Trustees: Steve Eichacker, Salem, SD; Randy Moody, New Market, AL, Gary Updyke, Checotah, OK; and Tom Nelson Wibaux, MT.

Doug Parke, Paris, KY, and Bob Volk, Arlington, NE, were recognized as this year's Golden Book Award recipients, while Carlos and Sister Guerra, La Muñeca Cattle Company, Linn, Texas, were presented ASA's Lifetime Promoter Award.

Founded in 1968, the American Simmental Association is headquartered in Bozeman, MT. ASA is committed to leveraging technology, education, and collaboration to accelerate genetic profitability for the beef industry. In keeping with its commitment, ASA, along with its partners, formed International Genetic Solutions - the world's largest genetic evaluation of beef cattle. Learn more at www.simmental.org.

We invite you
to our

MANITOBA SALES

Fullblood, Red & Black Simmental Bulls - Charolais Bulls

FEBRUARY

Rendezvous Farms 16th Annual Holiday Monday Simmental Bull & Female Sale
Monday, February 17 • Ste. Rose du Lac, MB

MARCH

Transcon's Winnipeg Simmental Bull Sale Monday, March 16 • Winnipeg, MB
Prairie Partners Bull Sale Tuesday, March 17 • Killarney, MB
Transcon's Premium Beef Simmental Bull Sale Wednesday, March 18 • Neepawa, MB
High Bluff Stock Farms Charolais & Simmental Bull Sale Friday, March 20 • Inglis, MB
Oakview/Perkin/Triple R Simmental Bull Sale Saturday, March 21 • Brandon, MB
Transcon's Cattle Country Simmental Bull Sale Monday, March 23 • Neepawa, MB
WLB Livestock 16th Annual Bull Sale Tuesday, March 24 • Douglas, MB

View these catalogues online or give us a call for more information



Jay Good
(403) 556-5563



Darren Paget
(403) 323-3985



Glenn Norton
(780) 542-0634



Cody Haney
(403) 559-8809



Terry Stewart
Office: (403) 638-9377



Sandra Brigden

WWW.TRANSCONLIVESTOCK.COM

R-PLUS SIMMENTALS 20TH ANNUAL BULL SALE

Sunday, March 8, 2020 • 1:00 PM

AT THE FARM NEAR ESTEVAN, SK

PIONEER HERD BREEDING
29 YEARS OF BLACKS & REDS

OFFERING: 100 BULLS

- 70 YEARLING BULLS
- 30 TWO YEAR OLD BULLS

ALL BULLS CARCASS EVALUATED

R+ BRAND OF CONSISTENCY & CONFIDENCE

To celebrate our 20th sale
in the year 2020, we will be offering...

20 ELITE YEARLING HEIFERS
& PICK OF FIRST CALF HEIFER PAIRS

FREE DELIVERY!



VIEW THE CATALOGUE
ONLINE AT
WWW.BUYAGRO.COM

Internet Bidding Available

D L M S
www.dlms.ca



VISITORS ALWAYS WELCOME TO OUR FAMILY OWNED - PEOPLE BUSINESS



SALE MANAGED BY

T BAR C CATTLE CO. LTD.

Chris: 306-220-5006

Shane: 403-363-9973

Ben: 519-374-3335

**R-PLUS
SIMMENTALS**
Marlin & Lucille
LeBlanc
Box 1476,
Estevan, SK, Canada
Cell: 306-421-2470
marlinleblanc@sasktel.net





(1) Sawyer Naasz, SDJSA President (2) Junior Spotlight: Aubree Freeman; Aubree liked showing her heifers and meeting new friends this year. (3) Junior Spotlight: Avery Antelope; Avery enjoyed spending time with his calves, getting to know them and making new friends. (4) SDJSA Officer Team

SOUTH DAKOTA SIMMENTAL ASSOCIATION JUNIOR NEWS

LETTER FROM THE PRESIDENT

Hi everyone! My name is Sawyer Naasz, and I am currently the South Dakota Junior Simmental Association President. This is my second year serving the Simmental breed, and I am super happy with the things we have done as a junior board. Previously, South Dakota did not have an active Simmental board. However, in the past two years we've changed that. Our current board has had regular meetings, helped with show and gotten social media active. We have help with check-in, helped prepare for state junior shows, and have encouraged younger members to be involved. I believe that our leadership within the junior association will help inspire younger members to be more involved with the Simmental breed and aspire to work for gaining leadership positions in the future.

South Dakota Juniors have had a great past year from the Simmental Regional in Fargo to Spotlight and State Fair. We started our year with the regional show in Fargo. We had great South Dakota representation. We had members place in almost all the age groups of

all the contests as well as cattle that placed in the show.

With the help of our junior board we were excited to revamp our educational contests at the Summer Spotlight. We had great membership participation and I think everyone was happy to see all the contests represented again. At the show, the board members helped with check-in and fill envelopes. Then at State Fair we were also able to help prepare for the show and help during.

My favorite contest is Sales Talk. My tip to juniors would be try something new! You never know what you might like. I look forward to seeing many youth in Grand Island in 2020 for Jr Nationals where I will be running for the National Junior Board. I would appreciate your support! I currently am in my freshman year at Butler Community College in Kansas.

RECORD SETTING SIXTY-SEVEN HEAD OF SIMMENTAL AT THE 2019 SD SUMMER SPOTLIGHT

2019 was a memorable year for the SD Junior Simmental Association. The Simmental show

outnumbered other breeds. Due to a higher number of exhibitors than previous years the contests were held prior to the show. The Junior Association would like to thank all the Simmental producers who volunteered their time as judges. The Juniors participated in Public Speaking, Sales Talk, and a Herdsman-Ship Quiz. The Junior Board awarded prizes to the top ten participants in each contest. The top over-all junior was Austin Rose, Junior was Taylor Harriman, and Senior was Lindsey Wolles. Looking for updates? Like the South Dakota Simmental Association on Facebook for all current updates.

2020 SOUTH DAKOTA SUMMER SPOTLIGHT DATES

The 2020 South Dakota Spotlight will be held July 23-26th, 2020 in Huron SD.

The check-in for Simmental cattle will be the morning of the 24th. The contest will start the afternoon of the 23rd in a to be announced location. The Simmental show will be on the 25th. For any updates follow the South Dakota Simmental Page on Facebook.



Annual Production Sale 2020

Friday, March 6th at 1:00 PM at the Farm, Salem, SD

KEEP MOVING FORWARD



ES F6 5/8 SM 3/8 AN
CLRS Conquest 634C x Remington Lock
N Load • Bred to Hook's Encore 65E



ES F60 1/2 SM 1/2 AN
Prairie Pride Next Step 2036 x R&R
Chamberlain • Bred to CCR Wichita 4069D



ES GA110-1
PUREBRED SM
WS Proclamation
E202 x Remington
Lock N Load



ES F138 1/2 SM 1/2 AN
B C Lookout 7024 x CNS Dream On L186
Bred to CCR Boulder 1339A



ES F127 3/4 SM 1/4 AN
ES BX64 x Ellingson Legacy
M229 • Bred to TJ Frosty
318E



ES GA226-2
5/8 SM 1/4 AR 1/8 AN
ES Buckshot BT51-2
x WS Beef King W107



ES GB34-2 PUREBRED
CDI Abundance 391C x
Remington Lock N Load 54U

ES GB101-1
5/8 SM 3/8 AN
Hook's Eagle 6E x
B C Lookout 7024



These bulls and females and many like them will sell in our production sale!

50 FEMALES + 90 BULLS

Simmental & SimAngus™, Sim/Red Angus, Angus & Red Angus

STEVE & CATHY
EICHACKER
Home
605-425-2391
Cell
605-421-1152



Salem, SD

Eberspacher
ENTERPRISES INC.

Sale Managers: Val & Lori Eberspacher 507-532-6694
Val Cell 612-805-7405 • sales@ebersale.com
Catalog will be online at www.ebersale.com

This sale will be
broadcast live
on the internet! **DVAuction**
Broadcasting Real-Time Auctions



SWAN LAKE RUM RUNNER 90F

Swan Lake Big Red 85B x Swan Lake Tammy 113D (Pheasantdale Wheaty 242Y)



SWAN LAKE BENELLI 120F

Erixon Magnum 69D x Swan Lake No Secret 5B (Red Mountain 16Z)



SWAN LAKE HIGH OCTANE 140F

Remington Lock N Load 54U x LRX Ms 153U (TNT Top Gun)

a sample of the bulls on offer from Swan Lake at the 14th Annual
PROUDLY WESTERN
 SATURDAY, MARCH 21, 2020 - 1:00PM
 Whitewood Auction Mart, Whitewood, Saskatchewan Canada *Bull Sale*



SWAN LAKE *Red Circuit* 28D



Greg Goudy



Greg Goudy & Brandon Goudy
 Stoughton, Saskatchewan Canada
 Greg: 306-457-7730 Brandon: 306-631-8818
 simmentalman@hotmail.com



BCLR CASH FLOW C820
ASA #3071303



3C BEAU NS 4332B BZ
ASA #2805089



3C PASQUE 4331B B
ASA #2914313



YARDLEY TITANIUM C377
ASA #3074978

175 YEARLING BULLS ■ SELECT GROUP OF OPEN HEIFERS

Simmental & SimAngus Genetics™



49th Annual Production Sale
AT THE RANCH, WESSINGTON, SD
FRIDAY, MARCH 20, 2020 1P.M. CST

LARGE SELECTION. GUARANTEED. AFFORDABLE.



Rick, NaLani,
NaLea, Chase, & Swayzee Dunsmore
21830 372nd Ave., Wessington SD 57381
Home: 605-458-2425 • Rick cell: 605-354-7523
NaLani cell: 605-350-5216



John & Carly Christensen
Tyler, Cam, Law & Cecil Fagerhaug
37273 216th St • Wessington, SD 57381
Home: 605-458-2218 • John Cell: 605-350-1278
Tyler Cell: 605-280-1416 • Cam Cell: 605-350-2018

S/M FLECKVIEH CATTLE

JEFF SORENSON
Garretson, South Dakota
sorenson@augie.edu | 605-359-8728
www.smfleckvieh.com

A Sample of our 2020 Sale Bulls



S/M Guardian G072

S: IPU Radium 20A WW: 785 Horned



S/M General G581

S: PHS Bank Roll 345B WW: 788 Polled



S/M Goldmine G68

S: Sibelle Arthur 39B WW: 882 Horned



S/M Granger G171

S: Anchor T Legend 7H WW: 802 Polled

YEARLING BULLS FOR SALE BY PRIVATE TREATY
PLEASE VISIT OUR WEBSITE FOR MORE INFORMATION

www.smfleckvieh.com

Our business is the **BULL BUSINESS**

*The results of
not selling females...*

Annual Bull Sale
March 26 '20

At the Farm, Bienfait, SK



- ** SIMMENTAL
- ** ANGUS
- ** TRUE F1'S
- ** 3/4 & 7/8% SIMM BULLS
- ** CALVING EASE
- ** BALDIE BULLS
- ** POWERS BULLS

*Performance,
Convenience &*

*Affordability
Make these bulls...*



Sire: Alliance



Sire: Alliance



Sire: Affiliate

*50 years
in the making...*

W
Wheatland
Cattle Co.

VERNON, DENISE, RILEY & CODY-RAY LAFRENTZ
BOX 118, BIENFAIT, SK S0C 0M0
C: 306-421-2297
RILEY: 306-461-8200 OR 620-960-7738
CODY-RAY: 620-960-9831

WM
Wheatland
Michelson

SHANE, ALAINA
MCKENNA & KADEN MICHELSON
C: 403-363-9973

T BAR C
Cattle Co. Ltd.
Your Program...
Our Passion!

CHRIS POLEY 306-220-5006
SHANE MICHELSON 403-363-9973
BEN WRIGHT 519-374-3335

dedicated to make a **GENETIC DIFFERENCE** *for you*

CALENDAR OF EVENTS

FEBRUARY 2020

- 1 Black Hills Stock Show and Sale --- Rapid City, SD
- 1 Klain Simmental Ranch Annual Production Sale --- Turtle Lake, ND
- 1 Turn In Bull Sale --- Sioux Center, IA
- 1 Steffan Simmentals Annual Bull Sale --- Killdeer, ND
- 2 Hartman Cattle Company Simmental Bull Sale --- Tecumseh, NE
- 2 Kline Simmental Annual Bull Sale --- Hurdsfield, ND
- 3 Wicks Cattle Annual Bull Sale --- Richardton, ND
- 4 James Creek Simmental Bull & Female Sale --- Heaton, ND
- 4 Koeplin's Black Simmentals Annual Production Sale --- Mandan, ND
- 5 Begger's Diamond V Ranch Bull Sale --- Wibaux, MT
- 5 Lazy C Diamond Simmental Ranch --- Kintyre, ND
- 6 Hart Simmentals Beef Builder Bull Sale --- Frederick, SD
- 6 Rust Mountain View Ranch's Annual "Ace in the Hole" Production Sale --- Mercer, ND
- 6 Stavick Simmentals "King of the Range" Sale --- Aberdeen, SD
- 7 Watertown Winter Farm Show & Sale --- Watertown, SD
- 7 Bata Brothers/Bell Family Bull and Female Sale --- Rugby, ND
- 7 Kunkel Simmentals Annual Production Sale --- New Salem, ND
- 8 Kenner Simmental Ranch Annual Production Sale --- Leeds, ND
- 8 Rydeen Farms Annual Production Sale --- Clearbrook, MN
- 9 Rockin R Farm Annual Bull Sale --- Bloomington, WI
- 10 Benda Ranch Annual Bull Sale --- Kimball, SD
- 10 Dakota Power Bull Sale --- Valley City, ND
- 10 Edge of the West Bull & Female Sale --- Mandan, ND
- 10 Ludvigson Stock Farms Dakota Bull & Female Sale --- Center, ND
- 11 Bichler Simmentals Bull & Female Sale --- Linton, ND
- 11 Werning Cattle Company's Annual Production Sale --- Mitchell, SD
- 12 Sys Simmental Annual Bull Sale --- Douglas, ND
- 12 Traxinger Simmental Annual Bull Sale --- Houghton, SD
- 13 Lassel Ranch Simmentals Sale --- Glendive, MT
- 14 Healy Simmental Annual Production Sale --- Yankton, SD
- 14 TNT Simmentals Bull Sale --- Almont, ND
- 15 Double T Simmentals Annual Bull Sale --- Turtle Lake, ND
- 15 Ekstrum Simmentals Annual Bull Sale --- Kimball, SD
- 15 Hoiby Simmental Bullnanza Sale --- McGregor, ND
- 16 Bonchuk Farms Bull Sale --- Virden, MB
- 17 Rendezvous Farms Annual Bull & Female Sale --- Ste. Rose, MB
- 18 Gill Red Angus "You Buy We Bid" Bull Sale --- Timber Lake, SD
- 18 Quandt Brothers/VJT Ranch "Power By Design" Sale --- Oakes, ND
- 19 M & J Farms Simmental & Angus Bull & Female Sale --- Russell, MB
- 21 Dakota Xpress Annual Bull and Female Sale --- Mandan, ND
- 21 R & R Cattle Company's Annual Production Sale --- Chamberlain, SD
- 22 Flittie Ranch Annual Bull Sale --- Aberdeen, SD
- 22 Meyer 7M Simmentals Private Treaty Sale --- Elgin, ND
- 23 Raml Cattle Annual Bull Sale --- Goodwin, SD
- 24 Lehrman Family Simmental Annual Sale --- Spencer, SD
- 25 Larson's XL Simmentals Annual Bull Sale --- Mandan, ND
- 26 Rancier Farms Herdmaster Bull Sale --- Camrose, AB
- 26 C Diamond Ranch Annual Bull Sale --- Dawson, ND
- 29 Lewis Farms Annual Bull Sale --- Spruce Grove, AB

MARCH 2020

- 1 Windy Creek Cattle Co Annual Sale --- Aberdeen, SD
- 3 Doll Ranch's Annual Bull Sale --- Mandan, ND
- 3 Double Bar D Best of Both Worlds Sale --- Grenfell, SK
- 5 Keller's Broken Heart Ranch Production Sale --- Mandan, ND
- 5 Brink Simmentals Annual Bull Sale --- Elkader, IA
- 6 Eichacker Simmentals Annual Bull Sale --- Salem, SD
- 6 LaBatte Simmentals Annual Bull & Female Sale --- Moose Jaw, SK
- 7 M&J Ranch/G&D Simmentals Annual Bull Sale --- Devils Lake, ND
- 7 McMillen Ranching Production Sale --- Carievale, SK
- 8 Northwest ND Select Simmental Sale --- Stanley, ND
- 8 Rocky Knoll Cattle Annual Bull Sale --- Highmore, SD
- 8 R Plus Simmentals --- Estevan, SK
- 9 Ashworth Farm & Ranch Annual Bull Sale --- Oungre, SK
- 9 Canadian Central Bull and Female Sale --- Winnipeg, MB
- 9 Rebels of the West Bull Sale --- Virden, MB
- 14 Interstate 29 Bull Run --- Souix Falls, SD
- 16 Wilkinson Farms "Breeding for the Future" Bull Sale --- Montpelier, ND
- 20 3C Christensen Ranch Annual Production Sale --- Wessington, SD
- 21 Proudly Western Bull Sale --- Whitewood, SK
- 21 Oakview-Perkin-Triple R Simmental Bull Sale --- Brandon, MB
- 24 WLB Livestock Annual Simmental Sale --- Douglas, MB
- 24 Hall Stock Farm Annual Sale --- Berthold, ND
- 26 Wheatland Cattle Company Bull Sale --- Bienfait, SK
- 29 Elliott Livestock/Tri-E Simmentals Bull Sale --- Clifford, ND

APRIL 2020

- 7 Nelson Livestock Company --- Wibaux, MT
- 8 Thomas Ranch Annual Bull Sale --- Harrold, SD
- 9 TSN Simmentals Annual Bull Sale --- Platte, SD
- 11 HillTop Simmentals, Spring Turnout --- Worthing, SD
- 14 Aufforth Northern Plains Simmentals --- Rugby, ND
- 20 Christensen Simmentals Production Sale --- Wessington Springs, SD

MAY 2020

- 7N Simmental Ranch --- Medina, ND

JULY 2020

- 5 - 11 AJSA National Classic --- Grand Island, NE
17- 25 North Dakota State Fair --- Minot, ND

SEPTEMBER 2020

- 3-7 --- SD State Fair

PRIVATE TREATY SALES

- CK Cattle, Highmore, SD
Dakota Simmental, Colome, SD
Ford Farms, Bruce, SD
Junck's Simmental, Sioux City, IA
Miller Cattle Co., Howard, SD
Rolling Prairie Simmentals, Glenfield, ND
S/M Fleckvieh, Garretson, SD
Schmidt Simmentals, Center, ND
Spirit Ranch, Zap, ND
Stangeland Simmentals, Glenfield, ND
Stanley Martins Farms, Postville, IA
Thyen SimAngus, Hayti, SD
Wager Cattle, Gettysburg, SD
Western Cattle Source, Crawford, NE
Wollmuth Ranch, Moffit, ND
Vander Wal Simmental, Bruce, SD
Zimmer Family Simmentals/BNC Livestock, Clarissa, MN

ADVERTISING INDEX

3C Christensen Ranch	31	Hall Stock Farm	37	R-Plus Simmentals	27
7N Simmental Ranch	23	Interstate 29 Bull Run	20	Raml Cattle	3
ASA Fall Focus	10	Keller Broken Heart Ranch	IFC	S/M Fleckvieh Cattle	32
Ashworth Farm & Ranch	11	LaBatte Simmentals	21	Stanley Martins Farms	20
C Diamond Simmentals	4	Lewis Farms	18	Swan Lake Farms	30
Canadian Central Bull and Female Sale	13	McMillen Ranch	16, 17	Transcon Livestock	26
Doll Simmental Ranch	5	NLC Simmental Ranch	31	TSN Simmentals	12
Double Bar D Farms	6, 7	North West North Dakota Select Simmental Sale	35	Wheatland Cattle Co	33
Eichacker Simmentals	29	Oakview-Perkin-Triple R Simmental Bull Sale	19	Wilkinson Farms Simmentals	9
First Defense	15	Proudly Western Bull Sale	36	Windy Creek Cattle Company	BC

North West

North Dakota Select Simmental Sale

March 14, 2020 • 1 p.m.

Mountrail County Fair Building, Stanley, N.D.

selling **95 Lots**
Simmental ~ SimAngus™

Bulls
Bred Registered Heifers
Open Registered Heifers
Bred & Open Commercial Heifers



HSR MS EL TIGRE F235 • 3/4 SM
IPU EL TIGRE X MYTTY IN FOCUS
BRED TO: KRJ HZN DIRECT IMPACT

ATTENTION JUNIORS!

Open heifers purchased in this sale
qualify to show at the
NW Select Junior Futurity at
the ND State Fair, with a jackpot of
\$2,000 guaranteed!



HSR MS TRACTION F336 • PB SM
TNT TRACTION X WS BEEF MAKER
BRED TO: KRJ HZN DIRECT IMPACT



HSR MS EL TIGRE F305 • 3/4 SM
IPU EL TIGRE X NICHOLS K205
BRED TO: GW REDESTINED 932A



HSR MS WHISKY RIVER F274 • 3/4 SM
TNT WHISKY RIVER B298 X KS TORNADO
BRED TO: KRJ HZN DIRECT IMPACT

For catalogs, contact: **Bob Grant (701) 340-8082**
Gary Sys (701) 509-1154

DVAuction
Broadcasting Real-Time Auctions

f Follow us on Facebook:
North Dakota Northwest
Select Simmental Group
Videos will be posted March 1.

14th Annual

PROUDLY WESTERN

Bull Sale

SATURDAY **MARCH 21
2020**

Whitewood
Auction Mart

Whitewood, SK
1:00 PM



Selling **SIMMENTAL YEARLING & EXTRA AGE BULLS**



SCISSORS CREEK CATTLE CO.

Mark & Jennalee Beutler

P: 306-735-4434

C: 306-735-7841

info@scissorscreekcattle.com

PRAIRIE WIND FARMS LTD.

Wes & Brian Mack

Wes: 306-634-4410 C: 306-421-1853

Brian: 306-634-4431 C: 306-421-2928

wkmack@signaldirect.ca

SUN RISE SIMMENTALS

Evan & Linda Cuss

P: 306-534-4700 C: 306-745-7431

cuss@sasktel.net

www.sunrisesimmentals.com

SWAN LAKE FARMS

Greg Goudy

P: 306-457-2959 C: 306-457-7730

Brandon Goudy: 306-631-8818

simmentelman@hotmail.com



Ph: 306-933-4200 Fax: 306-934-0744

info@tbarc.com www.buyagro.com

Chris Poley: 306-220-5006

Shane Michelson: 403-363-9973

Ben Wright: 519-374-3335



VIEW THE CATALOGUE ONLINE AT WWW.BUYAGRO.COM

722

BERTHOLD
NORTH DAKOTA

3.24.20

This sale will be broadcast live on the internet.

DVAuction

Broadcasting Real-Time Auctions
Real time bidding & proxy bidding available.



Zac Hall 701.595.6887
Ian Hall 701.720.4966
Levi Hall 701.720.6652

ANGUS • SIMANGUS

SELLING SONS OF
TJ Main Event 503B
TJ Diplomat 294D
BCLR Revelation D21-3

We strive to produce **QUALITY**:
building a **REPUTATION**
for **FUNCTIONALITY**,
PRODUCTIVITY & structural
INTEGRITY without
compromising eye appeal

WWW.HALLSTOCKFARM.COM

PROFIT THROUGH PERFORMANCE

DVAuction
Broadcasting Real-Time Auctions

Annual

BULL & FEMALE SALE
SIMMENTAL // SIMANGUS
MARCH 1, 2020

WINDY CREEK SALE FACILITY
SPENCER, SOUTH DAKOTA



901G

ASA# 3620342 | 3/4 Simmental
CDI Outlaw x WAGR Upside



908G

ASA# 3620348 | PB Simmental
CCR Cowboy Cut x TNT Tanker



912G

ASA# 3669890 | 5/8 Simmental
ES Surelock x WC United



939G

ASA# 3620377 | PB Simmental
ES Surelock x R&R Warehouse



323G

ASA# 3670187 | PB Simmental
WLE Uno Mas x MR TR Hammer



918G

ASA# 3620356 | PB Simmental
CCR Cowboy Cut x NLC Upgrade



965G

ASA# 3620401 | 5/8 Simmental
ES Surelock x R&R Pacesetter



980G

ASA# 3620415 | 5/8 Simmental
ES Surelock x WAGR Dream Catcher



956G

ASA# 3620393 | 3/4 Simmental
CLRS After Shock x ES Surelock



862F

ASA# 3474968 | 3/4 Simmental
CDI Outlaw x Tank
Due 3/14 to FHEN Endzone



843F

ASA# 3474963 | 3/4 Simmental
CDI Outlaw x Lock N Load
Due 2/25 to WINC Maximum Security



805F

ASA# 3474947 | PB Simmental
CDI Outlaw x HTP SVF in Dew Time
Due 2/14 to Hooks Beacon

Selling
45 BULLS
20 BRED HEIFERS

GUEST CONSIGNOR: BLAGG FAMILY
Kevin, Amber, Abby, & Ryan Blagg
Kevin | 605-240-0015

Windy Creek
Cattle Company

Jeremy, Bethany, Cash & Emerson Lehrman

25064 432nd Ave | Spencer | SD | 57374

605-530-5909

windycreek@triotel.net | windycreekcattlecompany.com