

South Dakota **Simmentaler**

& North Dakota
Simmental Scene



Offering
approximately
60 Simmental
& SimAngus
bulls.

QBVJT

POWER *By* DESIGN

FEBRUARY 18, 2020

VJT Tracker
ASA# 3523255



Triple H Simmentals

QB Last Frontier F42
ASA# 3509777



Hart Simmentals

GQ Coneco F6
ASA# 3509732



Begger Diamond V Ranch

.....
These 2019
High Sellers
are making their mark
on leading
Purebred Operations
.....

Join us at VJT Ranch
11039 81st St. SE
Oakes, ND 58474
1 PM CST Lunch Served

DVAuction
Broadcasting Real-Time Auctions

visit our website for more information
www.qbvjt.com



like us on Facebook

QBVJT Bulls For The Commercial Cattleman
Jason Quandt | 701-710-0080
Travis Thompson | 701-710-0843

NORTH DAKOTA SIMMENTAL ASSOCIATION

BOARD OF DIRECTORS

WWW.NORTHDAKOTASIMMENTAL.COM

David Doll, President (2021)
3991 36th St
New Salem, ND 58563
701-843-7947
dollfarm@westriv.com

Pat Thorson (2020)
16644 51st St SE
Kindred, ND 58051
701-371-8230
pat.thorson@westcentralag.com

Bryan Leapaldt, Vice President (2022)
5812 57th St NE
Leeds, ND 58346
701-739-8764
bleapaldt@gmail.com

Tim Clark, President (2021)
1999B 18th St NW
Turtle Lake, ND 58575
701-448-2815
Tim.Clark@hubbardfeeds.com

Kim Myers, Secretary/Treasurer
12066 57th St SE
Kathryn, ND 58049
701-308-1018
gkmyers@outlook.com

Dusty Kunkel (2021)
4513 Co Rd 85
New Salem, ND 58563
701-843-7006
kdkunkel@westriv.com

Doug Bichler (2019)
130 83rd St Se
Linton, ND 58552
701-254-4306
doughbichler@hotmail.com

Davis Kinn (2023)
212 South Ave.
Turtle Lake, ND 58575
701-400-5108
dkinn10@hotmail.com

JR Aufforth (2019)
6644 98th St NW
Bowbells, ND 58721-9315
701-339-1880
npsimm@gmail.com

Kelly Hanson (2023)
RR 1 Box 129
Hannaford, ND 58448
701-789-1391
kelly.hanson@centralplainsag.net

*(Year) denotes the end of term

SOUTH DAKOTA SIMMENTAL ASSOCIATION

BOARD OF DIRECTORS

WWW.SOUTHDAKOTASIMMENTAL.COM

Clay Duxbury, President (2021)
21060 375th Ave
Wessington, SD 57381
jackpotcattle@yahoo.com

Ross Demers (2020)
28381 318th AVE
Colome, SD 57528
605-840-4188
demersranch@goldenwest.net

Mike Stavick, Vice President (2020)
10752 Bia Road 15
Veblen, SD 57270
605-237-4663
stavickx@tnics.com

Chris Effling (2022)
P.O. Box 23
Highmore, SD 57345
605.769.0142
ceffling@tsln-fre.com

Kevin Blagg, Treasurer (2022)
PO Box 294
Salem, SD 57058
605-240-0015
kblagg@firstdakota.com

Harley Cable (2022)
23447 Rocky Rd
Pukwana, South Dakota
605-894-4464
hdcable@midstatesd.net

Colton Buus, Secretary (2021)
24352 438th Ave
Canova, SD 57321
605-214-3532
colton.buus@gmail.com

SD Junior Coordinators
Cam Fagerhaug, 605-350-2018
Amber Blagg, 605-240-0028

Cam Fagerhaug (2020)
23351 371st Ave
Wessington Springs, SD
605-350-2018
cam.fagerhaug@gmail.com

*(Year) denotes the end of term

South Dakota SimmenTeller & North Dakota Simmental Scene

Amy Stangeland
8670 7th ST NE
Glenfield, ND 58443
701-650-1210
stangelandcreativeservices@mail.com

The following terms and conditions have been agreed on by the North Dakota & South Dakota Simmental Association's Board of Directors and the Publication Committee.

Advertising Space Rates

Size	4C
Full Page	\$625
½ Page	\$450
¼ Page	\$250
Business Card	\$200 (per year)

Advertising Deadlines

Issue	Deadline
February	January 17, 2020
November	October 9, 2020
January	December 4, 2020

Terms

All advertising accounts are due and payable as invoiced. Interest charges of 1% per month will be assessed to accounts that are 30 days past due.

Delinquent Advertiser's Account

Advertisers knowingly and expressly agree and consent that, whenever accounts receivable for an advertiser have not been paid as of 90 days from date involved, advertising privileges will be suspended until full payment has been received.

Copy Changes

Alterations in advertising copy, if requested after closing dates will be permitted only if time allows.

The North Dakota & South Dakota Simmental Associations and this publication reserve the right to refuse any advertising copy at our sole discretion. The North Dakota & South Dakota Simmental Associations and this publication assume no responsibility for the accuracy of the advertising content submitted. Advertisers assume all responsibility for the accuracy and truthfulness of submitted advertising containing pedigrees or statements regarding performance.

Editorial Content

Opinions expressed are those of the writer and not necessarily those of the North Dakota & South Dakota Simmental Associations or of this publications. Photographs and manuscripts are welcome, but no responsibility is assumed either while in transit or while in this office.

About the Cover

A yearling Simmental heifer enjoys a beautiful winter snow. Photo taken by Emily Brinkman.



Amy Stangeland
Editor

FROM THE EDITOR

Greetings Cattle Producers,

Happy 2020! Thanks for all those who came out and attended both the North Dakota, and South Dakota state sale events! I found it interesting that at the ND banquet Jr auction the auctioneer had the buyer of each item stand up and say what they loved about the Simmental breed and most of those said its the people in the industry! SO thank each and everyone of you for being apart of it, showing up and to those that support the producers!

Highlights from ND events will be throughout this issue and the SD event will be highlighted in the Feb issue so stay tuned for that!

Most of this issue you'll see an outstanding line up of the bull sale season thats upon us. I feel like I say it every year but get out there and support our producers! They sure do appreciate it, and thanks again to those who are so faithful in supporting this industry! We couldn't do it without you!

Have a great January!

Amy Stangeland

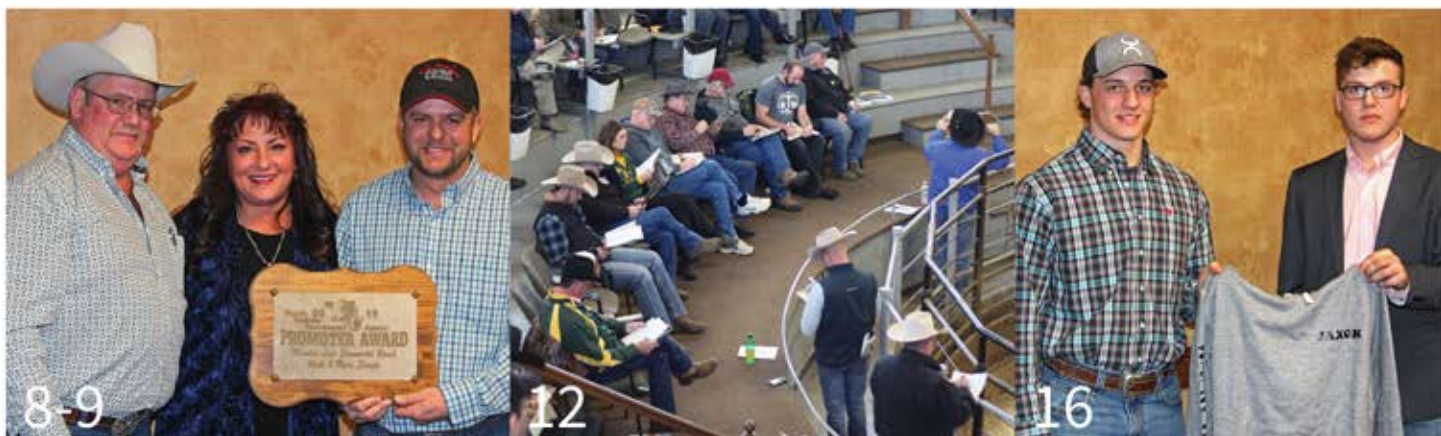


TABLE OF CONTENTS

8-9

NDSA AWARDS & BANQUET
Recognizing the 2019 NDSA Award recipients and banquet highlights

16

NDJSA NEWS
Recognizing 2019 NDJSA outstanding members and scholarship winners

12

NDSA CLASSIC SALE REPORT
Featuring sale averages and high sellers

42

CALENDAR OF EVENTS & ADVERTISER INDEX

RYDEEN FARMS 22ND ANNUAL PRODUCTION SALE

PERFORMANCE + PEACE OF MIND =

SIMMENTAL + SIMANGUS

Genetics with

VISION

SATURDAY, FEBRUARY 8, 2020 | CLEARBROOK, MN

68 BLACK & RED YEARLING BULLS | 12 AGED BULLS [18 MONTHS] | 30 BRED & 10 OPEN FEMALES

STOUT AGED BULLS



F244 - PB - ASA# 3565362

RFS Bulletproof x CDI Authority

Red, Homo Polled | 18-Month-Old

7.9 2.0 83 126 5 23 65 [130 API, 78 TI]

MANY CALVING EASE HEIFER BULLS



G133 - 1/2 - ASA# 3595948

G A R Relevance x SVF/NJC Built Right

Black, Homo Polled | Yearling

16.2 0.8 66 99 9 29 62 [161 API, 82 TI]

CALVING EASE HALF BLOODS



G68 - 1/2 - ASA# 3595883

KBHR Next Level x S A V Bismarck

Homo Black, Homo Polled | Yearling

13.5 0.3 77 122 9 23 62 [148 API, 83 TI]

SEVERAL SONS SELL!



G8 - PB - ASA# 3595821

WS Proclamation x CLRS Constitution

Homo Black, Homo Polled | Yearling

14.9 1.4 88 138 10 31 75 [161 API, 91 TI]



G121 - 3/4 - ASA# 3595936

KBHR High Road x W/C United

Homo Black, Homo Polled | Yearling

11.1 0.6 88 137 7 20 64 [130 API, 87 TI]



G116 - PB - ASA# 3595931

IR Imperial x TJ Power Grid

Red, Homo Polled | Yearling

12.5 -0.8 67 101 8 33 66 [153 API, 82 TI]

Visit our website for updates, including videos and online catalog at

www.rydeenfarms.com

ASA Performance



Advocate

ALLIED
GENETIC RESOURCES

DVAuction
Broadcasting Real-Time Auctions



12/10/19 EPDs: CE BW WW YW MCE Milk MWW API TI

RYDEEN FARMS
Est. 1897

Polled Red & Black Simmental Cattle

47499 199th Ave, Clearbrook, MN 56634

Farm: 218-776-3338 | Paul: 218-280-1916 | rydeen@gvtel.com

SD SimmenTeller & ND Simmental Scene | 3

MONDAY, FEBRUARY 24 • 12:00 NOON
MITCHELL LIVESTOCK AUCTION • MITCHELL, SD

LEHRMAN FAMILY SIMMENTALS

Annual Production SALE 2020

Selling 75 Lots!

25 SPRING PAIRS & BRED HEIFERS
50 POWERHOUSE HERD BULL PROSPECTS

This sale will be
broadcast live
on the internet! **DVAuction**
Broadcasting Real-Time Auctions

LEFS BULLSEYE 912G



PB
SM

W/C Bullseye 3046A x CDI Authority 77X

LEFS RED ANSWER 961G



PB
SM

W/C HOC Red Answer x TNT Gunner N208

LEFS MR TANKER 958G



PB
SM

NLC Tanker U263 x Mr NLC Upgrade

LEFS AUTHORITY 940G



PB
SM

CDI Authority 77X x Remington
Lock N-Load

LEFS LOAD LIMIT 968G



3/4
SM

DFSI Load Limit x W/C Lock Down 206Z

LEFS TANKER 966G



3/8
SM

WINC Tanker 620D x GLS New Direction
X184

LEFS LOADED UP 862F



PB
SM

W/C Loaded Up 102C x AJE/GC Vortex
Z603 • Bred to GW Major Move 390E

LEFS MS EXPECTATION 525F



5/8
SM

Hooks Xpection 36X x BFCK Cherokee
Canyon • Bred to CDI Ace

JASS FUTURA F753D



3/4
SM

KNH Added Value 58W TRPH Mr United
A01 • Bred to RTZ F42

LEHRMAN FAMILY SIMMENTALS

43058 245th St, Spencer, SD 57374 • lehrmanvd@triotel.net
Dan 605-530-5903, Bill 605-240-0035, Randy 605-421-1492



SALE MANAGED BY EBERSPACHER ENTERPRISES INC.

Office 507-532-6694 • Val Cell 612-805-7405

FULL CATALOG ONLINE AT WWW.EBERSALE.COM



BCLR CASH FLOW C820
ASA #3071303



3C BEAU NS 4332B BZ
ASA #2805089



3C PASQUE 4331B B
ASA #2914313



YARDLEY TITANIUM C377
ASA #3074978

175 YEARLING BULLS ■ SELECT GROUP OF OPEN HEIFERS

Simmental & SimAngus Genetics™



49th Annual Production Sale
AT THE RANCH, WESSINGTON, SD
FRIDAY, MARCH 20, 2020 1P.M. CST

LARGE SELECTION. GUARANTEED. AFFORDABLE.

NLC
SIMMENTAL RANCH



Rick, NaLani,
NaLea, Chase, & Swayzee Dunsmore
21830 372nd Ave., Wessington SD 57381
Home: 605-458-2425 • Rick cell: 605-354-7523
NaLani cell: 605-350-5216



3C CHRISTENSEN RANCH
Wessington, SD

John & Carly Christensen
Tyler, Cam, Law & Cecil Fagerhaug
37273 216th St • Wessington, SD 57381
Home: 605-458-2218 • John Cell: 605-350-1278
Tyler Cell: 605-280-1416 • Cam Cell: 605-350-2018

POWER & GROWTH

Calving Ease

Maternal & Carcass Traits

Annual Production Sale
Feb. 15, 2020

At the Ranch, Turtle Lake

Selling

40

Red & Black Simmental &
SimInfluenced Yearling Bulls,
Open & Bred Females

10 Bred Heifers
20 Open Heifers

& New this Year:

THE ELITE EIGHT

4 Elite Selected
Breds
4 Elite Fancy Opens



421G Admiral X GAR Progress • 1/2 SM
Homo Polled • Homo Black



630G

MAR Innovation X IR Platinum • 1/2 SM
Homo Polled • Hetero Black



687G

MGR Treasure X Bozeman • 1/2 SM
Homo Polled • Homo Black



280G

TT Elite X Shear Force • 3/4 SM • Homo Polled



550G

OOO Sirloin X Hook's Red Zone • 1/2 SM • Homo Polled



Tim & Tam Clark • Ranch: (701) 448-2815
Tim Cell: (701) 799-7752 • Tam Cell: (701) 315-0032

www.DoubleTSimmentals.com

Stop by anytime to see the cattle! ~ Turtle Lake, ND

Lazy C DIAMOND SIMMENTAL RANCH

FEBRUARY 5TH, 2020 - 1PM CST
@ THE RANCH - KINTYRE, ND

Selling:

- 70 yearling & 18 month old Red & Black Simmental/SimAngus™ Bulls
- 15 Bred Heifer & Select Open Heifer Lots
- *Pick of the Cowherd, Flush Opportunity, & Embryos

PRE-SALE VISITORS ARE ALWAYS WELCOME & RECEIVE \$100 OFF A BULL PURCHASE
VOLUME DISCOUNTS || ALL BLACK BULLS ARE VERIFIED HOMO OR HETERO BLACK



TJ Mr 38W

ASA# 2529932

Pick of 3
Innovator
daughters out
of the 38W
donor! 2
baldies, 1 solid
black!



LCDR Witness 541C ASA#3027291

PASTURE RIGHTS ON THIS POPULAR HERD SIRE WILL SELL!

LCDR Favor 149F



ASA# 3491054

A full brother to Lcdr Favor 149F will sell!



Pick of 3
WS Ms Sugar C4
daughters!
Sired by
CDI Innovator and
Ajax!



LCDR 116G

Bull calf sired by Lcdr American Red, a past high
seller to Crossroad Farms!

LCDR Impact 134F



ASA# 3491039

2019 High Selling
LCDR bull;
several 1/2 ET
siblings will sell
along with
embryos sired by
him!

LAZY C DIAMOND RANCH

CHRIS & JULIA NICHOLSON || 6235 23RD AVE SE || KINTYRE, ND 58549
CHRIS: 701-391-6904 || EMAIL: CNN2005@HOTMAIL.COM



"LazyCDiamondSimmRanch"

www.lazycdiamondranch.com

ALLIED
GENETIC RESOURCES

DVAuction Broadcasting Real-time Auctions



(1) Wade and Merri Staigle receive the Promoter of the Year Award from NDSA Board member Dusty Kunkle. (2) Charles and Janet Staigle receive the Pioneer Award from NDSA Board member Dusty Kunkle. (3) Oscar and Gloria Kleven receive the Commercial Cattle Producer of the Year award from NDSA Board member Bryan Leapoldt. (4) The 2020 NDSA Board of Directors. (5) Retiring NDSA Director, Todd Finke. (6) Retiring NDSA Director, Derik Samuelson. (7) Coloring contest participants at the 2019 NDSA Annual Banquet.

NORTH DAKOTA SIMMENTAL ANNUAL BANQUET HIGHLIGHTS & AWARD RECIPIENTS

2019 PROMOTER OF THE YEAR

Written by Dusty Kunkle

This individual went to North Dakota State College of Science in Wahpeton for a degree in Diesel Mechanics. He never got a job with this degree, but it comes in handy having basic knowledge of mechanics on the ranch. He married the love of his life in 1984. Together, they moved back to the family's place where they leased a neighboring Hereford-based commercial based herd. At the same time, they were keeping up a small group of registered Simmental cows and sold bulls private treaty.

Then sometime in the '80s, he took an opportunity to purchase an AI business, selling semen for Minnesota Valley Breeders. He taught many people how to AI during this tenure. Then in 1992 he was offered a district sales position with ABS, so he and his wife sold their AI business and took the opportunity to learn about the beef industry more. Five years later, another opportunity arose, and he quit working for ABS.

In 1997, they purchased the Brown's Simmental herd in Sterling, ND. He began to sell bulls at public auction. Then in 2005, yet another opportunity came along. Dakota Xpress was started. This individual and a couple of other breeders combined forces. Today Dakota Xpress is the combined efforts of Mandan Lake Simmentals and Hansen Simmentals.

He has been very active with many organizations including the American Simmental Association, the North Dakota Stockman's Association, served as a director for the North Dakota Simmental Association, was on the local school board and a 4H leader. He was also known as the best "hoe'r" in Oliver County winning the 2018 North Dakota Association of Soil Conservation District's Achievement Award for working with the NRCS and keeping his trees clean.

He and his wife, who works as an Occupational Therapist during the school year, have three boys. Daniel and his wife Amber, and their two children Laramie and Conley. Ethan and his fiancé Alysia, and Logan and his fiancé Keylee. Daniel and Ethan are full-time partners at the ranch and Logan lives in Bismarck and helps when he can. His parents, Charles and Janet are retired but still help where they can.

On behalf of the North Dakota Simmental Association, I would like to congratulate Wade and Merri Staigle of Mandan Lake Simmentals on receiving the 2019 Promoter of the Year.

2019 PIONEER AWARD

Written by Dusty Kunkle

This individual started farming/ranching at the early age of 16 when his father suddenly passed away from a heart condition. He needed to help his mother continue to run

the family farm/ranch as she was still raising younger siblings. He came from a family of 10. After finishing high school, he made farming and ranching his life occupation. Like most operations of that era, they milked cows and sold cream, raised hogs, sheep, chickens and cattle. He was married in 1961 and they raised 4 children and have survived 58 years of marriage! In 1965, they purchased and moved to a farm next to the family farm that actually had running water! At this time, they continued to expand the ranch. They raised commercial Hereford cows. Then decided to crossbreed them in the early 1970's after seeing what Simmental genetics did for his brother. He had sold some of the first half blood Simmental calves in 1970 in the first annual ND State Simmental Sale. He noticed the huge improvement that Simmental genetics gave to crossbreeding with increased weaning weights, milk, and disposition improvements. He went to ABS AI school so he would be able to use top Simmental genetics through AI, using bulls such as, Galant, Beat, and Bismarck, just to name a few. It was very important to generate as much weaning weight to increase calf value, due to the challenging economic times of the late 70's and early 80's. With continued AI, he was able develop the purebred cow herd and sell bulls by private treaty. Along with raising cattle they also raised certified grain. He continued to actively farm and ranch side by side with his wife until he retired at the age of 78, and



3



4



5



6



7

has still kept a small herd of cows in partnership with the family. They continue to live on the ranch today and help out in any way they can with the day to day activities. Farming is still in their blood, just on a smaller scale, they love gardening!

It is my honor to congratulate Charles and Janet Staigle on receiving the 2019 Pioneer Award.

2019 COMMERCIAL CATTLE PRODUCER OF THE YEAR AWARD

Written by Bryan Leapaldt

The Commercial Producer of the year award goes to a couple who have been working side-by-side for 42 years.

They graduated from NDSU in the Spring of 1977, married in the summer of 1977 and bought two Angus cow herds to get their operation started in the Fall of 1977. In 1981, they bought their first Simmental bull from Rudy Peltz because they were looking to increase their weaning weights. In 1982, they bought another one from Orville Deckert. They were extremely happy with the added performance and once the ½ blood cows were bred back to Simmental they were even more pleased with the ¾ bloods.

In 1983, their vet said there was going to be an AI school in Harvey and he told Oscar to sign up or he was going to sign him up. Oscar made it to the school and started AI'ing heifers that summer. While AI'ing they would always use natural heat detection, which meant a lot of time on horseback. Their two kids helped out a lot with this. They AI'd for 35 years and just quit a few years ago. With kids gone, they wanted a little more free time.

When AI'ing they selected for maternal traits with performance combined. What they appreciate the most about Simmental is their docility. They also like their fleshing ability and hardiness.

Some of the first Simmental bulls they AI'd to were: PBM Saviour, Monarch, Alpine Polled Proto, Bold Leader, Hills Triple Crown, and Double Time.

Something interesting is their cattle buyer wanted them to put belts on the calves so they'd bring more and then when time went on, he wanted them to take the belts off so they'd bring more!

Marketing of their calves included backgrounding them until January and selling them off the farm to the same buyer for years and then through the sale barn where their

calves are heavily sought after.

Keeping records is a huge part of their operation. They have records for every cow that has ever been on their farm, which is a huge help in replacement heifer selection and culling. They also believe in a good vaccination and health program with excellent husbandry practices.

They always enjoy bull buying season. Over the years, they have bought bulls from breeders all over the state. This shows when bull buying season is in full force and the counter is full of catalogs. They spend many hours going through the catalogs and making selections on EPDs, 205-weights and average daily gains. Then it's off to the sales to make their purchases.

Their daughter and son-in-law recently moved back and are built a house on the same farm, but both have full time jobs. They are helping out with the operation with the hope of taking over some day. Their son and daughter-in-law live in Bismarck and he is the Executive Secretary of ND State FFA. They also have several grandkids between the two children.

The Commercial Producer of the Year is - Oscar & Gloria Kleven of Maddock, ND.

Hoiby Simmental Bullnanza

Northwest North Dakota's Source for
Simmental & SimAngus Genetics!

Selling:

**40 Black and Red Bulls
10 Black and Red Bred Heifers
10 Black and Red Open Heifers
Simmental and SimAngus**

Saturday,

February 15, 2020

1:00 PM CT

*At the ranch, in the heated sale barn • McGregor, ND
Please join us for a pre-sale lunch!*



MRL Max x PF Vern
3/4 Simmental 1/4 Angus
EPDs: 8 2 66 97 4 27 63



KBHR Overnight x WS Zenith
Purebred
EPDs: 11 0 70 107 7 18 53



BlackSand Wrecking Ball x Dikemans Sure Bet
Purebred
EPDs: 10 2 75 113 4 23 60



SDS Graduate x BlackSand Wrecking Ball
5/8 Simmental 3/8 Angus
EPDs: 13 -.1 78 119 6 24 63



PF Slingshot x MRL Thunder
1/2 Simmental 1/2 Angus
EPDs: 9 2 69 104 6 21 56



Hooks Beacon x BlackSand Wrecking Ball
3/4 Simmental 1/4 Angus
EPDs: 13 0 75 112 9 22 60

HOIBY SIMMENTAL RANCH

Lyndon, Shelley, Paige & Levi Hoiby
7890 101st Ave. NW • McGregor, ND 58755
Home: 701-546-4043 • Cell: 701-641-1083

Email: hoibysim@nccray.com
Website: hoibysimmentalranch.com

R&R Cattle Company

2019 High selling
bull purchased by
5G Farms, Missouri

Homozygous black
& Homozygous Polled

Sired by Confidence
Plus out of R&R Miss
D642 by Cowboy Cut
API: 155.3 TI: 89.5



R&R Sudden Impact F813

Production Sale Friday, Feb. 21, 2020 *at the Ranch*

60 Yearling Bulls & 10 Heifers

Simmental Sires: CCR Boulder 1339A, TJ
Diplomat 294D, Ruby Turnpike 771E, TKCC
Carver 65C, CCR Cowboy Cut, CDI Innovator

Angus Sires: SAV Rainmaster 6849,
Musgrave Stunner 316, Barstow Cash

with guest consignor
Cable's
C Cross Ranch
605-894-4464



Steve & Elaine Reimer
25657 345th Ave.
Chamberlain, SD 57325
605-234-6111 • 605-680-1939
rrcattle@midstatesd.net

View our website for more information
www.RRCattleCo.com

This sale will be broadcast live on the internet.

DVAuction
Broadcasting Real-Time Auctions

Real time bidding & proxy bidding available.

SD Simmentaler & ND Simmental Scene | 11



(1) The crowd at the 2019 NDSA Classic sale. (2) Dusty Kunkle giving reports at the NDSA Annual Meeting. (3) Erika Kenner gives an update on the ASA Board. (4) Annual meeting attendees. (5) NDSA Classic sale attendees.

NORTH DAKOTA SIMMENTAL ASSOCIATION CLASSIC SALE REPORT

North Dakota Simmental Association
2019 Classic Sale

Mandan, ND

December 14, 2019

Auctioneer: Tracy Harl

Sale Manager: Thomas Livestock Services

33 Bred Heifers average \$2,892

15 Open Heifers average \$1,947

5 ET Lots average \$380

TOP SELLING BRED HEIFERS

Lot 36. \$6,000, TRAXS Miss Riddler F842, March 5, 2018, LFE The Riddler 323B x KS Black Diamond W992, sold bred to WS Certified E151, consigned by Traxinger Farm, Houghton, SD, sold to Quandt Bros., Oakes, ND

Lot 34. \$6,000, TRAXS Miss H Regard F806, February 8, 2018, KG High Regard 2073 x LRS Pendleton 669Z, sold bred to Colorado Bridle Bit E752, consigned by Traxinger Farm, Houghton, SD, sold to Quandt Bros., Oakes, ND

Lot 33. \$5,750, SRF Miss 809F, March 1, 2018, Hook's Beacon 56B x GW-WBF Substance 820Y, sold bred to Hook's Black Hawk 50B, consigned by SRF Simmentals, Berthold, ND, sold to Erika Kenner, Leeds, ND

TOP SELLING OPEN HEIFERS

Lot 44. \$3,500, TT Gloria 995G, February 23, 2019, CCR Abilene 6018C x Hook's Bozeman 8B, consigned by Double T Simmental, Turtle Lake, ND, sold to Rick Schmidt, Center, ND

W/C {The Brand for Results}

39th Annual Production Sale

TUESDAY, FEBRUARY 11TH • 12:00 NOON AT THE RANCH

27262 424th Avenue, Emery, South Dakota 57332



W/C Bankroll 811D
Selling 20 direct progeny!

*When selecting
the next
genetics for
your herd,
make sure
you're on the
right side of
the fence!*



802F SimAngus™
CDI Innovator x Dream Catcher
Safe to W/C Night Watch!



8041F SimAngus™
W/C Bankroll x Bushs Focus
Safe to W/C Lock Down

SELLING 280 HEAD!
**SIMMENTAL, SIMANGUS™ &
ANGUS**

160 PERFORMANCE BULLS
120 YEARLING BULLS
40 STRONG AGED BULLS
120 REGISTERED BRED HEIFERS
SEMEN & EMBRYOS

**WERNING
CATTLE COMPANY**

OFFICE 605-825-4024
DALE 605-661-3625
SCOTT 605-682-9610
JARED 605-933-1661

27262 424th Avenue, Emery, SD
www.werningcattle.com

E&E

Eberspacher Enterprises Inc.
Val & Lori Eberspacher 507-532-6694
Val Eberspacher Cell 612-805-7405
Email: sales@ebersale.com

Like us on Facebook for all sale updates!

2904 County Road 6, Marshall, MN 56258
www.ebersale.com



Miss Werning KP 8543U

Selling 5 future donor direct
daughters by Lock N Load, Loaded
Up, & Insight as well as two big time
sons by CDI CEO!



Miss Werning 534R

Selling 20 direct progeny by
SAV Raindance, Rubys Turnpike,
Cornerstone & Executive Order!

TNT SIMMENTALS

35th Annual "Genetic Explosion" Sale
Friday, FEBRUARY 14, 2020
 1 p.m. CST • At the Ranch • 5 mi. South of Almont, ND

Your **COMMERCIAL BULL HEADQUARTERS**, along with **BREED-LEADING HERDSIRES!**
 They are **THICK** and **DEEP** – All backed by the **TNT 100% GUARANTEE!** No creep feed!

Selling Approximately
110 Bulls

Purebred Black Sim Purebred Red Sim Purebred Red Angus
 3/4, 1/2 & 1/4 SimAngus™ 3/4, 1/2 & 1/4 SimAngus™



LEACHMAN CADILLAC L025A x TNT FIVE STAR P275
 3 Full Brothers Sell!



HOOKS TRINITY 9T x TNT FIVE STAR P275
 5 Full Brothers Sell!



TNT BCR UNIFIED B203 x HERBSTER WEST RIVER 5158



LEACHMAN CADILLAC L025A x TNT FIVE STAR P275
 3 Full Brothers Sell



TNT PRIDE C232 x TNT BCR UNIFIED B203



IR IMPERIAL D948 x TNT TANNERITE B369



TNT UNION D385 x TNT SCHOLAR X321



IR IMPERIAL D948 x TNT BOOTLEGGER 2268



TJ ROOSEVELT 366E x MR NLC UPGRADE U8676

View videos online. For catalog, contact

- Volume discounts!
- Ultrasound and performance data and current EPDs will be available!
- Majority homozygous polled!
- All reds are non-diluters!
- All blacks will be homozygous- or heterozygous-black verified!

ALLIED
 GENETIC RESOURCES



TNT
 SIMMENTAL
 RANCH

TNT SIMMENTAL RANCH
 Kevin & Lynette Thompson
 5125 53rd St • Almont, ND 58520-9731
 (701) 843-8454 • (701) 391-1631 (Kevin's cell)
 kevinandlynette@westriv.com • www.tntsimmentals.com

Live internet bidding at www.DVAuction.com.

Just 15 mi. south of I-94 Exit 123 • Visitors always welcome!

The genetics worth waiting for!

KELLER BROKEN HEART RANCH

Thursday, March 5, 2020

1:00 p.m., At the Ranch, Mandan, ND

SELLING 180 HEAD

100 High-Performance Red & Black Simmental & SimAngus™ Bulls
and 80 Red & Black Simmental & SimAngus™ Heifers

EXCITING NEW HERDSIRES!



KBHR HIGH ROAD

Owned with Gibb Farms, J/C Simmentals and All Beef
CE 17 BW -0.9 WW 87 YW 133 MCE 12
M 29 MWW 72 API 171 TI 98



KBHR SNIPER

Owned with Wilkinson Farm Simmentals
CE 25 BW -4.1 WW 72 YW 107 MCE 15
M 29 MWW 65 API 180 TI 87



KBHR WENTZ

Owned with Bielenberg Simmentals and All Beef
CE 13 BW 1.6 WW 88 YW 140 MCE 7
M 23 MWW 67 API 136 TI 86



Dwight, Susan & Jake Keller — Luke & Katy Keller — Tessa & Thomas Osterbauer
701-471-5215 (Dwight) • 701-471-1142 (Luke) • 701-471-5065 (Jake) • 701-445-7350 (Home)
1573 55th St., Mandan, ND 58554 • kbhr@westriv.com • www.kbhersimmental.com

EPDs 12/9/19



(1) NDJSA Outstanding Junior, Drew Erickson. (2) NDJSA Outstanding Senior, Jaxon Deckert. (3) NDJSA Scholarship recipient, Jaxon Deckert. (4) NDJSA Scholarship recipient, Trey Klain.

NORTH DAKOTA JUNIOR SIMMENTAL ASSOCIATION AWARD RECIPIENTS

2019 OUTSTANDING JUNIOR

Drew Erickson is the oldest of Shane and Jennifer Erickson with a younger sister – Ashtyn. He is a 6th grader at Lewis and Clark North Shore Plaza and participates in basketball, baseball, and band. He is part of the Mountrail County Pioneers 4-H Club, Mountrail County 4-H Judging Team, ND JR. Simmental Assn., American Junior Simmental Assn., and the ND Jr. Points Assn.

His family lives in Plaza where they raise Black Simmentals Cattle and also Farm. When he's not helping out on the farm, he's shagging baseballs any chance he can get.

In March of every year he helps with cattle sold at the NW Select Simmental sale and sometimes he might get a purchase in without letting his parents help. At the age of seven he purchased a red Simmental heifer at the sale and insisted that he does all the bidding, and to this day his sister still likes to point out that he purchased the only Red Simmental on the place. We can thank Gary Sys!

At age five his showing days started with pigs and the following year into Simmental

cattle. His first calf he showed was a bull calf he raised and showed with no fear. For the past 6 years Drew has participated at the Mountrail County Achievement Days and has accomplished to show Champion Simmental heifers. This past year he joined the ND Jr. Points Assn. and participated in various shows throughout the summer to complete the summer with 3rd Overall Simmental Heifer and 3rd Overall Steer with the ND Jr. Points Assn. His early mornings to his late nights in the show barn paid off for him at the NDSF with taking 5th overall in the open show with his Simmental Steer. Due to his commitment and determination it was fun to watch him grow with his showing and his achievements throughout the summer. Everyone could see his excitement on his face after being happy with his placing, it would make his grandparents laugh who were watching in the stands.

It's his enthusiasm that he expresses that has made us all reflect on our days that we showed and the memories he'll make in the years to come.

2019 OUTSTANDING SENIOR

2003 was the year this young man attended his first Simmental Regional in Mason City, Iowa. Since he was 2 ½, he and Trey Klain spent lots of time in the sandbox, while their older siblings were in the barn. That was just the beginning of his love for cattle and showing.

He has showed in 4-H, FFA, Jr. Point Shows, the Jr. Simmental Show at the ND State Fair, and also competed at Regional and National Jr. Simmental shows. His excitement for the future of cattle lead him to being on the NDJSA Board, and 4-H President.

He earned his first trip to the National Western Livestock Show in Denver with the Kidder Co. Livestock Judging team, where he place 7th overall in Beef.

The discipline he learned on the ranch, in the show barn and in the arena showing has attributed to his success as a college athlete, Majoring in Agri Business at Concordia College.

Your Outstanding Sr. in the Junior Association is Jaxon Deckert.



SK Grand Slam G14

Kappes Grand Slam C141 x Winter E101

ASA# 3536549 5/8 SM 3/8 AN

CE: 15.2 BW: -0.8 WW: 69.8 YW: 106.1 ADG: 0.23 MCE: 9.4 MILK: 27.6 MWW: 62.5 STAY: 14.9
DOC: 13.5 CW: 19 YG: -0.28 MRB: 0.09 BF: -0.037 REA: 0.71 API: 125.8 TI: 71.5



SK Roughrider G31

Ellingson Roughrider 4202 x Sadie C153

ASA# 3539423 1/2 SM 1/2 AN

CE: 8.8 BW: 1 WW: 77.7 YW: 121.3 ADG: 0.27 MCE: 5.9 MILK: 20 MWW: 58.8 STAY: 14.4
DOC: 19.7 CW: 39.5 YG: -0.08 MRB: 0.35 BF: -0.001 REA: 0.64 SHR: -0.49 API: 130 TI: 78



SK Smooth G43

SK Smooth Criminal E174 x Sadie B356

ASA# 3540149 PB SM

CE: 6.3 BW: 4.5 WW: 80.7 YW: 126.1 ADG: 0.28 MCE: 4.1 MILK: 25 MWW: 65.3 STAY: 16.7
DOC: 11.8 CW: 37.4 YG: -0.48 MRB: -0.06 BF: -0.11 REA: 1.01 SHR: -0.18 API: 116.8 TI: 72



SK Innovator G66

CDI Innovator 325D x Sadie B74

ASA# 3544536 PB SM

CE: 10.3 BW: 0.9 WW: 85.9 YW: 131.2 ADG: 0.28 MCE: 5.8 MILK: 26.3 MWW: 69.3 STAY: 17.7
DOC: 15.2 CW: 52.9 YG: -0.33 MRB: 0.11 BF: -0.094 REA: 0.87 SHR: -0.28 API: 140.2 TI: 83.6

PRIVATE TREATY BULLS

sale

Bids Close January 24, 2020 | 3:00 pm

Sumption Farms // 10953 390th Ave // Frederick // SD

COWS FOR SALE

First come, first serve 35 head

Complete dispersion of March calving & 6 year old & older February calving cows



Bruce Kappes // 605.380.1303

Sterling Kappes // 605.216.3581

Aberdeen // SD

Videos available at [f](#) [YouTube](#)

Like our page on Facebook - SK Cattle



KAPPES MAXI LOU Z608

WAGR Dream Catcher x C50P

ASA# 2644218 1/2 SM 1/2 AN

AI SIRE: LCDR FAVOR EST.DUE: 2/18/2020



KAPPES SOPHIE 8543 B27

Yardley High Regard W242 x 8543

ASA# 2840230 PB SM

AI SIRE: W/C PINNACLE E80 EST.DUE: 2/22/2020



SK SADIE W16 C153 F823

Kappes Hammertime C505 x Sadie C153

ASA# 3407585 PB SM

AI SIRE: SAV Bismarck EST.DUE: 2/11/2020

ADDITIONAL AI & SERVICE SIRES ON COWS: TKCC CARVER, CDI INNOVATOR, BARSTOW CASH, TJ FRANCHISE, & CDI TRUSTEE 387F

SD SimmenTeller & ND Simmental Scene | 17

60 Fall born 18 month old, 30 purebred Simmental, 120 SimAngus™ and 20 Angus Bulls, all are black and polled, most are homozygous

Simmental

Angus

BEGGER'S

Begger's
DIAMOND V RANCH

BIG SKY GENETIC SOURCE BULL SALE

Wednesday, February 5, 2020 • 12:30 PM – At the Ranch – Wibaux, MT



**Selling 170 Black Simmental,
SimAngus™ and Angus**



COW POWER AT ITS FINEST:

The basis of any good breeding program is the mother cow. Our motto is: **"THE RANCHER COMES FIRST"**. Every breeding decision we make is to improve our customer's bottom line. BEGGER'S DIAMOND V RANCH provides the perfect blend of COW SENSE, COMMON SENSE and SCIENCE. We know the value of a good mother cow, she must be fertile, efficient and problem-free. She must have the staying power to produce a valuable calf year-after-year on her own, with no extra assistance in the environment mother nature provides. She must possess a low-maintenance, easy-fleshing body type that requires little or no extra input. She has to have a problem-free udder and have a good gentle attitude with a set of feet and legs that will serve her until she exits your program at a ripe old age.

- ❖ We are your source for homozygous black and polled Simmental, SimAngus™, Angus genetics, the top 170 bulls out of 275 sell.
- ❖ Many ½ & ¾ brothers sell in volume enabling you to assemble like bred genetics that are predictable and consistent.
- ❖ From a program that does the day-to-day work. We calve, feed, and work around our cattle every day, so we know our cows if they become problematic. They won't see next year and their only way out is through a packing plant.
- ❖ We are straight shooters, we don't hem and haw or beat around the bush. We honestly try to answer and meet our customer's questions, needs and concerns. Our bulls come with a complete 100% satisfaction warranty. If there is a problem we will make it right.
- ❖ We provide free bull keep until April, along with a free breeding soundness exam and free delivery, in most cases nationwide on purchases over \$5,000.
- ❖ Every bull walks through the sale ring enabling you to see what you are buying. Some pictures and videos just don't represent cattle as they should.
- ❖ A 100% satisfaction guarantee on sight unseen purchases.

The chase is on by Breed Associations, A.I. Companies, Universities, and some breeders to go to an EPD-only selection format. They furnish only an EPD profile and dollar indexes to make breeding selections (we firmly believe in and use EPDs, but feel that they are only one of many tools to consider when making breeding decisions). They claim that by furnishing less info, it's less confusing, and they are making it easier on you. We feel that most cattlemen are smart enough to understand and make good use of any and all information we can provide. Raw data such as actual birth wt., 205 wt., 365 wt., ADG and rations tells you how a calf has performed among his contemporaries. It shows you his potential to sire calves that may increase or decrease performance. There are way too many cattle out there with excellent EPDs and dollar indexes that are not worthy of anything but a castrating knife. You can breed for all the highest EPDs and indexes in the world, but if you sacrifice ABILITY, CARCASS TRAITS, MENTAL, and PHYSICAL TRAITS, along with an animal's ability to produce pay weight and eye appeal, all you will gain is a cull cow with good EPDs.

ALLIED
GENETIC RESOURCES

DVAuction
Broadcasting Real-Time Auctions

Look for us on Facebook



Bill Begger: 406-796-2326 / John Begger: 406-795-9914
darbegger@yahoo.com / 482 Custer Trail Road Wibaux, MT 59353

beggersdiamondvranch.com



Annual Production Sale 2020

Friday, March 6th at 1:00 PM at the Farm, Salem, SD

KEEP MOVING FORWARD

She sells in Rapid City!

**CHECK HER OUT AT THE BHSS ON
FEBRUARY 8, 2020!**

ES F17 • Purebred
CDI Perspective X CDI Authority
Bred to: CDI Legendary 364D on 5/30/2019

ES GB101-1 • 5/8 SM 3/8 AN
Hook's Eagle 6E X BC Lookout 7024

*This bull and many like him
will sell in our production sale!*

50 FEMALES + 90 BULLS

Simmental & SimAngus™, Sim/Red Angus, Angus & Red Angus

**STEVE & CATHY
EICHACKER**
Home
605-425-2391
Cell
605-421-1152



Eberspacher
ENTERPRISES INC.

This sale will be
broadcast live
on the internet! **DVAuction**
Broadcasting Real-Time Auctions

Sale Managers: Val & Lori Eberspacher 507-532-6694
Val Cell 612-805-7405 • sales@ebersale.com
Catalog will be online at www.ebersale.com

H HARTMAN CATTLE COMPANY

SIMMENTAL Bull Sale

Sunday February 2, 2020



SCAN
DATA WILL BE
AVAILABLE AT
SALE TIME

Lot 1 3 Aces Net Profit F508

Sunday, February 2, 2020
Tecumseh, NE
at the HCC Sale Center

12:00 noon Hors d'oeuvres & Drinks
2:00pm Auction Sale

Offering 50 bulls including...
40 PB • 10 %
Polled • blacks & reds

Located from the Junction of
Hwy 136 & 50, in Tecumseh
go North 3 miles on HWY 50,
2 miles west on Hwy 41 and
1/4 North at the sign.

Bulls are available for
inspection anytime.
Please call ahead.

Online bidding provided by:



**View our catalog
online at**
www.hartmancattleco.com

HARTMAN CATTLE COMPANY

Mike, Kay, Dalton & Jill Hartman
61878 732 RD
Tecumseh NE 68450
402-335-2577 or 335-3177

Mike (cell) 402-440-6825
Dalton (cell) 402-440-6469

CONTINENTAL
LIVESTOCK
SERVICES, LLC.
P.O. Box 368 • HAMILTON, MO 64644
BUD SLOAN • (816) 583-2104
(816) 803-9725 Cell

Auctioneer: Steve Dorran
760-972-7736

Check out our bulls in the yards at Denver

**Video
Auction**

Featuring...

Herdsmen for Purebred and Commercial Breeders

Selling the best bulls right off the top of the HCC 2019 calf crop. Unequalled in quality, pedigree, and performance and we'll include a special consignment of exceptional individuals from fellow breeders.

20th Annual **King of the Range**

Thursday,

FEB. 6, 2020

1:00 PM CST

Aberdeen Livestock, Aberdeen, SD

DVAuction

Production Sale

90 Simmental Bulls and 30 Open Simmental Heifers

Sires Represented: GW Red Oak 295B, Kinns Mega Wide 3316E, LRS Tenx Excellance 352C, RBS Boise B63, Red Baron HR P101, STAV King Of Clubs 106Y, STAV Pipeline 4E, TJ Crossfit 570C, TNT Pride C232, WINC Hoss 562C, WS All Aboard B80, and WS Certified E151.



STAV CERTIFIED 11G • #3549823
3/4 SM • WS CERTIFIED E151



STAV CERTIFIED 13G • #3549826
Homo Black/Polled • PB SM • WS CERTIFIED E151



STAV RED OAK 18G • #3549838
5/8 SM • GW RED OAK 295B



STAV PIPELINE 22G • #3549844
Homo Polled • 5/8 SM • STAV PIPELINE 4E



STAV ALL ABOARD 37G • #3549882
1/2 SM • WS ALL ABOARD B80



STAV PRIDE 44G • #3549899
Homo Black/Polled • PB SM • TNT PRIDE C232



STAV PIPELINE 61G • #3549947
3/4 SM • STAV PIPELINE 4E



STAV MEGA WIDE 64G • #3549952
PB SM • KINNS MEGA WIDE 3316E



STAV RED OAK 103G • #3549853
Homo Polled • 3/4 SM • GW RED OAK 295B



STAV PRIDE 107G • #3549889
Homo Black/Polled • PB SM • TNT PRIDE C232

M/S

STAVICK SIMMENTAL

Mike, Myra, Owen & Livie Stavick

605-237-4663 (Mike)

605-551-9016 (Owen)

stavickx@tnics.com

stavicksimmental.com





46TH ANNUAL BULL SALE

SIMMENTAL II SIMANGUS™ II ANGUS BULLS

SELLING 60 BULLS
SATURDAY, JANUARY 25, 2020 @ NOON

COMPLETE INFORMATION, PICTURES + VIDEOS AVAILABLE ONLINE AT WWW.DOUBLEJSIMMENTALS.COM



901
PB • WW 892 • API 149 • TI 88
BLACK HAWK X UNO MAS
HERD SIRE! Unmatched CE, Growth, & EPDs.



914
3/4 • WW 687 • API 132 • TI 77
TRUE JUSTICE X MAKERS MARK
Outcross genetics with WW, YW, & Milk.



920
3/4 • WW 698 • API 129 • TI 70
BOISE X PREMIUM BEEF
Many calving ease bulls that add pounds.



931
PB • WW 753 • API 129 • TI 75
BOISE X UPGRADE
Maternal with growth – 110 WW Ratio.



955
PB • WW 694 • API 142 • TI 80
RIMROCK X SHEAR FORCE (ET)
Outstanding non-diluter red bulls sell.



963
PB • WW 732 • API 144 • TI 86
INNOVATOR X UNO MAS
Curve bending genetics!



974
PB • WW 777 • API 115 • TI 76
TURNPIKE X UPRISING
Top 2% for WW & YW, 114 WW Ratio.



976
PB • WW 712 • API 143 • TI 81
CASH FLOW X COWBOY CUT
WW, YW, TI top 4%.



984
1/2 • WW 667 • API 125 • TI 72
CLASSIFIED X LONG DISTANCE
White-faced bull, 21 percentage bulls sell.



986
PB • WW 667 • API 138 • TI 74
BIG TIMBER X UNLIMITED
New outcross maternal genetics.



989
3/4 • WW 746 • API 138 • TI 79
CASH FLOW X CHAMBERLIAN
Growth with a REA in Top 1%.



9154
PB • WW 700 • API 129 • TI 83
TURNPIKE X CASH FLOW (ET)
High performance with WW, YW, & REA Top 1%



9158
PB • WW 694 • API 121 • TI 68
BOISE X GOLDMINE (ET)
Large sire groups sell & 4 ET brothers.

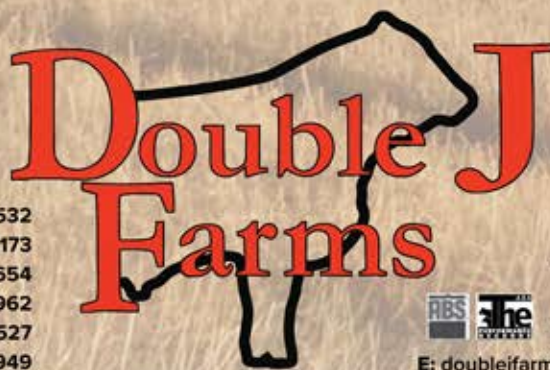
PICTURES + EPDs AS OF DEC. 4, 2019

COLTON BUUS, ASA FIELD REP 605.214.3532
ZACH LUTZ 605.695.2173
BOB JULSON 605.351.2654
TED SOUVIGNIER 605.660.3962
JARED SUTTON 605.864.8527
OUR PERSPECTIVE 813.967.6949

SIRES INCLUDE

CASH FLOW • BOISE • TURN PIKE • COWBOY CUT
BLACK HAWK • INNOVATOR • CLASSIFIED • RIMROCK • TRUE JUSTICE

All bulls coat color and polled tested.
Bulls will be wintered and semen tested guaranteed with delivery available.



9166
PB • WW 827 • API 119 • TI 75
TURNPIKE X DREAM ON (ET)
Constant donor with high growth & power.

KIPP JULSON

48672 252nd Street – Garretson, SD 57030

KIPP'S CELL: 605.351.9088

SALE DAY LANDLINE: 605.594.2310



E: doublejfarm@alliancom.net || www.doublejsimmentals.com

2J

46TH ANNUAL BULL SALE

SIMMENTAL || SIMANGUS™ || ANGUS BULLS

SATURDAY, JANUARY 25, 2020 @ NOON

TAG	COLOR	%	PEDIGREE	DAM	DOB	ACT BW	ADJ WW	CE	BW	WW	YW	MCE	MM	MWW	API	TI
901	BLK	PB	BLACK HAWK X UNO MAS	64E	1/24	82	892	16	-1	86	124	9	20	63	149	88
902	BLK	1/2	BOULDER X BISMARK	119E	2/6	80	680	15	-1	64	100	9	27	59	149	77
908	BLK	5/8	NIGHTRIDE X BOISE	E763	2/13	68	656	15	-1	68	101	8	23	57	148	80
914	BLK	3/4	TRUE JUSTICE X MAKERS MARK	D620	2/15	97	687	11	2	79	121	8	27	66	132	77
920	BLK	3/4	BOISE X PREMIUM BEEF	B401	2/16	82	698	15	-1	67	98	10	26	59	129	70
922	RED	PB	ALL ABOARD X RANCH HAND	X010	2/17	71	620	17	-3	63	90	11	27	58	150	77
928	BLK	3/4	BLACK HAWK X CLASSIFIED	E789	2/19	74	714	12	-2	76	114	5	24	62	134	77
929	BLK	5/8	INNOVATOR X BRILLIANCE SON	B4133	2/19	86	692	13	-1	76	116	6	29	67	140	80
931	BLK	PB	BOISE X UPGRADE	A3106	2/19	102	753	11	2	75	107	6	28	66	129	75
932	BLK	5/8	BLACK HAWK X BRILLIANCE	E715	2/19	79	640	16	-1	75	114	9	24	61	144	79
933	BLK	PB	BOISE X TANKER	A348	2/20	93	723	11	1	73	106	9	32	69	127	71
942	BLK	3/4	BLACK HAWK X BROADWAY	E794	2/20	87	704	11	2	80	125	7	23	63	133	77
943	BLK	PB	COWBOY CUT X UNLIMITED	D632	2/20	83	675	13	0	73	105	8	29	65	149	78
945	BLK	3/4	COWBOY CUT X IN FOCUS	Y105	2/21	98	693	12	2	79	114	8	23	62	142	78
950	BLK	5/8	NIGHTRIDE X COWBOY CUT	E781	2/21	76	664	17	-3	61	93	10	22	52	160	80
951	BLK	3/4	TRUE JUSTICE X DAUL FOCUS	Y107	2/21	87	616	13	0	66	100	8	26	59	132	71
955	RED	PB	RIMROCK X SHEAR FORCE (ET)	A332	2/21	85	694	14	-1	71	98	8	22	58	142	80
958	BLK	3/4	COWBOY CUT X ROBUST	D698	2/22	80	704	15	-1	79	114	8	27	66	158	88
959	BLK	PB	BOISE X DREAM ON	Z286	2/22	95	620	12	1	64	86	9	25	57	131	68
962	BLK	PB	BOISE X TANKER	D6116	2/22	85	739	12	1	75	109	9	28	65	131	73
963	BLK	PB	INNOVATOR X UNO MAS	101D	2/22	87	732	13	0	81	121	6	25	66	144	86
966	BLK	PB	BIG TIMBER X BERETTA	D6134	2/23	88	727	13	-1	71	101	8	26	61	144	77
967	BLK	3/4	NIGHTRIDE X COWBOY CUT	E756	2/23	90	701	12	1	73	107	6	20	56	147	80
970	BLK	3/4	BOISE X RANGE BOSS	B413	2/23	90	683	12	1	78	113	8	20	59	133	76
971	RED	PB	RIMROCK X SHEAR FORCE (ET)	A332	2/23	96	699	14	-1	70	95	8	23	57	142	79
974	BLK	PB	TURNPIKE X UPRISING	DY37	2/23	98	777	8	4	87	132	5	18	62	115	76
976	BLK	PB	CASH FLOW X COWBOY CUT	D644	2/23	103	712	9	3	86	128	4	18	61	143	81
980	BLK	PB	BLACK HAWK X COWBOY CUT	E748	2/24	85	755	15	0	84	124	9	24	66	152	84
981	BLK	PB	CASH FLOW X UNLIMITED	D645	2/24	75	687	15	-2	74	111	1	20	57	145	78
984	BWS	1/2	CLASSIFIED X LONG DISTANCE	C5131	2/24	86	667	12	-1	65	100	4	23	55	125	72
986	BLK	PB	BIG TIMBER X UNLIMITED	D638	2/25	93	667	11	1	68	101	7	27	61	138	74
987	BLK	PB	CASH FLOW X BLK DIAMOND	A393	2/25	93	759	11	2	82	124	5	18	59	135	77
988	BLK	3/4	BOULDER X SANTA FE	E735	2/25	71	688	14	-2	69	104	8	23	58	138	76
989	BLK	3/4	CASH FLOW X CHAMBERLIAN	A3114	2/25	104	746	9	3	83	119	3	19	60	138	79
990	BLK	PB	BOISE X DEW IT RIGHT	C583	2/25	102	750	8	3	79	112	4	26	66	122	72
991	BLK	AN	FORTRESS X FRONTMAN	624	2/26	94	697	9	-0.4	62	108	13	25	55		
992	BLK	PB	TRUE JUSTICE X GOLDMINE	A370	2/25	90	723	8	2	74	105	4	28	64	129	75
994	BWF	PB	BIG TIMBER X GAME PLAN	D6131	2/26	82	620	12	0	66	99	8	25	58	138	73
995	BLK	PB	CASH FLOW X CHAMBERLIAN	Z285	2/27	98	645	10	2	75	108	3	17	55	135	75
998	BLK	3/4	BLACK HAWK X NIGHT RIDE	E7106	2/27	64	680	19	-5	67	103	11	23	56	166	85
9100	BLK	PB	BOISE X TANKER	A3118	3/1	102	671	9	3	74	108	7	27	65	120	68
9102	BLK	PB	CASH FLOW X FORTIFIED	D6135	3/1	88	768	13	1	84	127	7	20	62	143	82
9104	BLK	PB	BLACK HAWK X TANKER D488	E770	3/1	76	619	15	-1	73	108	9	21	57	144	77
9107	BLK	PB	CASH FLOW X COWBOY CUT	C5127	3/4	104	783	10	4	92	137	5	17	63	142	84
9108	BLK	3/4	CASH FLOW X BRILLIANCE	D699	3/4	75	673	15	-1	76	116	7	21	59	134	77
9109	RED	PB	ALL ABOARD X REDESTINED	B440	3/5	82	710	14	-2	75	107	8	24	61	158	86
9119	BLK	3/4	BOULDER X INTEGRATE	E799	3/12	91	683	12	1	78	122	8	21	59	134	77
9120	BLK	PB	COWBOY CUT X OPTIMUS PRIME	B039	3/12	80	624	15	0	69	95	8	23	58	144	76
9123	BLK	3/4	CLASSIFIED X EFFICIENT	Z213	3/14	86	722	11	1	76	115	5	23	60	123	75
9127	BLK	PB	BLACK HAWK X INTEGRATE	E780	3/15	77	707	16	-1	80	123	9	21	61	144	81
9151	BLK	PB	BOISE X GOLDMINE (ET)	U828	2/24	92	657	13	1	68	90	8	25	59	121	68
9152	BLK	PB	BOISE X GOLDMINE (ET)	U828	2/25	98	572	13	1	68	90	8	25	59	121	68
9154	BLK	PB	TURNPIKE X CASH FLOW (ET)	E774	2/27	95	700	7	4	92	140	3	17	63	129	83
9156	BLK	PB	BOISE X GOLDMINE (ET)	U828	2/27	93	764	13	1	68	90	8	25	59	121	68
9158	BLK	PB	BOISE X GOLDMINE (ET)	U828	2/27	88	694	13	1	68	90	8	25	59	121	68
9160	RED	PB	LAW MAKER X ALL AROUND	D49	3/1	80	873	10	2	77	120	4	27	66	133	76
9162	BLK	PB	TURNPIKE X CASH FLOW (ET)	E774	3/2	103	764	7	1	92	140	3	17	63	129	83
9166	BLK	PB	TURNPIKE X DREAM ON (ET)	T739	3/5	101	827	10	4	84	127	5	24	66	119	75



Uniformity From Us Creates Uniformity For You!

38th Annual Production Sale

Saturday, February 1, 2020

Selling:

48 Yearling Simmental & SimAngus™ Bulls
10 Bred Registered Heifers • 10 Open Registered Heifers

New Location!

1 p.m. CST
At the Ranch
Ruso, ND

Auctioneer:
Dustin Carter

Sale features include these highlights from the North Star Classic!



KSR PRISM 409G

Black PB SM Polled • 2/18/19 • #3633873

QB BLUEPRINT D47 x NLC BREAK FREE 72W

CE	BW	WW	YW	MCE	MM	MW	CW	YG	MB
8.9	3.7	83.7	131.0	5.6	21.7	63.5	42.8	-0.40	0.10



KSR DOUBLE DOWN 4267G

Red PB SM Polled • 2/19/19 • #3560696

WS ALL ABOARD B80 x AJE/HS/MBCC CASANOVA W4

CE	BW	WW	YW	MCE	MM	MW	CW	YG	MB
12.6	0.4	76.9	116.3	7.0	23.4	61.8	34.9	-0.51	0.11

Visit our website at:

klainsimmentalranch.com

48 Years Performance Testing
23 Years Ultrasound Testing



KLAIN SIMMENTAL RANCH

Durnell, Darcy and Trey Klain • Tyler and Carrie Klain • Dalyce and Adam Balk

(701) 448-2408 • 1364 20th St NW • Ruso, ND 58778

Benda Ranch

ANNUAL PRODUCTION SALE

Monday, February 10, 2020 at 1:00 PM | Kimball Livestock Exchange, Kimball, SD



JBS Mr. Main Event 9G
TJ Main Event 503B X W/C United 956Y
1/2 SM | ASA# 3640664
WW Ratio: 110 | Rank: 16/121



JBS Mr. Red Moon 764G
WS Red Moon X JBS Mr Tanker 750A
PB SM | ASA# 3640766
WW Ratio: 115 | Rank: 6/121



JBS Mr. Night Watch 614G
W/C Night Watch 84E X WS Stepping Stone B44
3/4 SM | ASA# 3640758
WW Ratio: 118 | Rank: 3/121

NO CREEP FEED, JUST MILK AND GRASS! - FREE WINTERING UNTIL APRIL 15TH & SEMEN TESTED.



JBS Mr. Nightride 741G
J Bar J Nightride 225Z X KCF Bennett Absolute
1/2 SM | ASA# 3640573
WW Ratio: 113 | Rank: 9/121



JBS Mr. Casino 701G
JBS Big Casino 336Y X B/R New Frontier 095
5/8 SM | ASA# 3640563
WW Ratio: 116 | Rank: 4/121



JBS Mr. Boulder 235G
CCR Boulder 1339A X ASR/GLS Pacesetter U862
5/8 SM | ASA# 3640575
WW Ratio: 108 | Rank: 25/121

Other sires include: CCR Cowboy Cut, Hook's Bozeman, RBS Boise, RFS Bulletproof, Koch Big Timber, DCR Domination, SAV Renown

Contact Us for a Catalog!

Benda Ranch Simmentals

Jim & Jay Benda
26106 366th Ave. Kimball, SD 57355
bendaranch@midstatesd.net

Home. 605-778-6703
Jim. 605-730-6703
Jay. 605-730-0215

VIDEO SALE - WATCH AND BID ONLINE

DVAuction
Broadcasting Real-Time Auctions

www.bendaranch.com

PUTTIN' BEEF WHERE IT COUNTS, IN YOUR POCKET BOOK!

EKSTRUM SIMMENTALS
Annual Bull Sale | February 15, 2020 | Kimball, SD



MRL Capone130B



LFE The Riddler 323B



EKR Freight Train 399E



BBS Hurricane D15



DKSR Coach D95

Celebrating 50 Years OF RAISING OUTCROSS PERFORMANCE SIMMENTAL GENETICS!

EKSTRUM

RAISING
SIMMENTALS
SINCE 1970

ET
SIMMENTALS

& SIMM/GENETICS

EKSTRUM SIMMENTALS & SIMGENETICS

Clay Ekstrum: (H) 605-778-6185 / (C) 605-730-1511 | John Ekstrum: 605-778-6414

36220 257th St. Kimball, SD 57355 | Email: clayekstrum@midstatesd.net

Find us on Facebook: Ekstrum Simmentals

WWW.EKSTRUMSIMMENTALS.COM

South Dakota's source for outcross performance Simmentals specializing in red breeding stock

Videos online & live sale broadcast at www.dvauction.com

DVAuction
Broadcasting Real-Time Auctions



Harvie Red Summit 54B ASA# 3232851
 CE BW WW YW ADG MCE MM MWW SAPI STI
 12 1.1 90 143 .33 8 23 68 118 77



CDI Innovator 325D ASA# 3152448
 CE BW WW YW ADG MCE MM MWW SAPI STI
 14 .3 95 148 .33 7 26 73 153 93



LFE The Riddler 323B ASA# 3173936
 CE BW WW YW ADG MCE MM MWW SAPI STI
 5 3.5 101 156 .35 8 17 68 139 87



Remington Lock N Load 54U ASA# 2503661
 CE BW WW YW ADG MCE MM MWW SAPI STI
 10 1 69 114 .28 4 18 53 132 72



Wheatland Bull 680S ASA# 2433584
 CE BW WW YW ADG MCE MM MWW SAPI STI
 3 4.7 68 114 .29 -.4 23 57 108 63

For catalogs and information:



Terry Ellingson & Family

Phone: 701-384-6225

Cell: 701-741-3045

5065 125th Ave. NE • Dahlen, ND 58224

email: tellings@polarcomm.com

Guest Consignor:

Strommen Simmentals, Arthur, ND • 701-967-8320

The catalog and updated information
 (homozygous polled test, ultrasound
 and scrotal measurements)
 will be available online.

DVAuction

Looking for Performance?

Ellingson Simmental Performance Bull & Female Sale

Friday, January 24, 2020 • 1:00 pm CST

Sale Location: At the farm, Dahlen, ND

20th Anniversary

Selling:

**100 Yearling Simmental and SimAngus Bulls
 30 Open Yearling Heifers**

Other sires include: VAR Discovery 2240, Harvie JDF Wallbanger 111X, TNT Bootlegger Z268, Ellingson Dominator W905, Ellingson Legacy M229 (Olie) and CLSR After Shock 604A.

Bulls will be SEMEN TESTED and GUARANTEED BREEDERS.



GLS Integrate Z3 ASA# 2659754
 CE BW WW YW ADG MCE MM MWW SAPI STI
 14 2.6 101 167 .41 7 11 61 115 83



Hook's Eagle 6E ASA# 3253742
 CE BW WW YW ADG MCE Milk MWW SAPI STI
 15 -.9 98 147 .31 10 13 62 150 92



Silveiras Mission Nexus 1378 ASA# 2964186
 CE BW WW YW ADG MCE Milk MWW SAPI STI
 15 -2.6 69 117 .30 9 19 54 122 77



CDI Hometown 246A ASA# 2732032
 CE BW WW YW ADG MCE Milk MWW SAPI STI
 5 4 96 150 .34 3 23 71 158 95

www.ellingsonsimmentals.com or www.simmental.org

KLINE

SIMMENTAL RANCH
Hurdsville, North Dakota

8th Annual Production Sale FEB. 2, 2020

AT THE RANCH • HURDSFIELD, ND

Selling: 50 Simmental and SimAngus™ Bulls
15 Registered Bred Heifers
20 Registered Open Heifers
& aprx 100 commercial bred heifers



G931

QB Blueprint D47 x MR NLC Superior S6018
ASA#: 3647929 • BD: 2/26/2019 • PB SM

Act. BW	EPDS	CED	BW	WW	YW	MCE
101		5.3	5.4	94.3	144.6	3.8
Adj. 205	MILK	MWW	MARB	REA	API	TI
913	18.8	62.6	-0.04	0.99	115.5	78.2



G912

LFE The Riddler 323B x Rendezvous Locomotive 80B
ASA#: 3648701 • BD: 2/20/2019 • 3/4 SM 1/4 CS

Act. BW	EPDS	CED	BW	WW	YW	MCE
102		5.9	3.1	82.6	122.6	5.5
Adj. 205	MILK	MWW	MARB	REA	API	TI
900	18.4	59.6	-0.06	0.96	115.6	73.5



G959

LFE The Riddler 323B x LFE BS Lewis 322U
ASA#: 3647943 • BD: 3/3/2019 • PB SM

Act. BW	EPDS	CED	BW	WW	YW	MCE
100		4.3	4.7	96	142.3	3.5
Adj. 205	MILK	MWW	MARB	REA	API	TI
866	12.6	58.9	-0.09	0.96	117.5	77.8



G969

MRL Red Whiskey 101B x Rendezvous Locomotive 80B
ASA#: 3647928 • BD: 3/5/2019 • PB SM

Act. BW	EPDS	CED	BW	WW	YW	MCE
96		4.3	5.7	92.3	133.5	4.8
Adj. 205	MILK	MWW	MARB	REA	API	TI
857	21.6	66.4	-0.06	0.92	112.2	76



G919

Kuntz Sheriff 8A x MRL Red Whiskey 101B
ASA#: 3647886 • BD: 2/24/2019 • PB SM

Act. BW	EPDS	CED	BW	WW	YW	MCE
80		14.3	-1.3	76.7	114.6	8.8
Adj. 205	MILK	MWW	MARB	REA	API	TI
812	24.7	62.3	-0.18	0.8	125.9	73.9



G992

KLSR Nation wide E702 x Kuntz Sheriff 8A
ASA#: 3647874 • BD: 3/11/2019 • PB SM

Act. BW	EPDS	CED	BW	WW	YW	MCE
98		10.5	2.5	81.7	119.4	6.3
Adj. 205	MILK	MWW	MARB	REA	API	TI
870	23.9	61.8	-0.16	0.56	118.1	71.8

Reliable working cattle that add value & profit to your operation!

Visit us online or on Facebook to request a catalog or for videos, DNA and other updates prior to sale day.

www.KLSRCOWS.com

[f/Kline Simmental Ranch](https://www.facebook.com/KlineSimmentalRanch)

Visitors welcome anytime!

Monty & Terri • Matt, Eddy, Emersyn & Landri Kline

Matt: (701) 693-6317 • Monty: (701) 693-6806

E-mail: klsrcows@gmail.com

OUR LONG-TERM COMMITMENT TO Powerful Genetics

STARTS WITH PRODUCTIVE DAMS LIKE THESE!



G108 Sells Feb. 7!

LBR Right Focus W271 x Colorado Bridle Bit E752
Homo Polled • ASA# 3632513 • Act. WW 916



G164 Sells Feb. 7!

Ankonian Red Caesar x DKSR Galaxy B108
ASA# 3632209 • Act. WW 866



G151 Sells Feb. 7!

WS All In W111 x CDI Ambition 255C
Homo Polled • ASA# 3632196 • Act. WW 852



G110 Sells Feb. 7!

TT Red Zone 031C x IR Imperial D948
Homo Polled • ASA# 3632155 • Act. WW 818



Sells Feb. 7!

G100

CCR Cowboy Cut 5048Z x Hook's Beacon 56B
Homo Black/Homo Polled • ASA# 3632145 • Act. WW 870



Call to be added to our mailing list and to request a catalog!

Dusty & Kayla Kunkel, New Salem, ND
(701) 471-5342 • (701) 843-7006
www.kunkelsimmentals.com

E-mail: kdkunkel@westriv.com • Visitors always welcome!



Kunkel Simmentals
DKSR

Annual Production Sale

Feb. 7, 2020

At the Ranch • New Salem, ND • 1 P.M. CST

55 BULLS • 40 BRED HEIFERS

Look for updates, pictures and videos of our 2020 sale offering on our website!
WWW.WILKINSONFARMSSIMMENTALS.COM

BREEDING FOR THE FUTURE

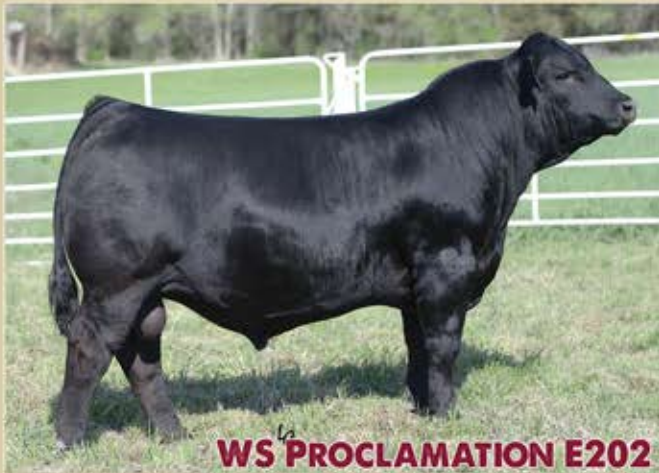
SELLING
60 Polled
Simmental Bulls

**NEW
SALE
DATE!!**

22ND ANNUAL PRODUCTION SALE

MONDAY, MARCH 16TH, 2020 - 1PM

SALE LOCATION >>> CB SALE FACILITY 4 miles south of our ranch on 76th Ave, SE.



WS PROCLAMATION E202

Tremendous big time spread bull. Top 2% CE and top 1% WW & YW. 12 traits in the top 5% of the breed.
Several sons selling! Semen available.



KBHR SNIPER E036

A true calving ease specialist.
Impressive -4.0 BW to 107 YW EPDs.
First sons sell in this year's sale! Semen available.

PRIVATE TREATY BRED HEIFERS

SELLING 30 BRED HEIFERS

to start calving March 1st.

Carrying the services of
WS Proclamation, KBHR Sniper,
WS All Aboard, WS Outcross and more.



HEIFERS LIKE THIS AVAILABLE IN THE OFFERING!



Wilkinson Farms Simmentals

Terry & Cathy Schlenker Family
Montpelier, ND 58472 • 701- 489-3583
Aaron Cell: 701-269-8271 - Terry Cell: 701-320-2171

ALLIED
GENETIC RESOURCES
Marty Ropp - 406-581-7835
www.alliedgeneticresources.com

DVAuction
Broadcasting Real-Time Auctions
Real time bidding & proxy bidding available.
For questions contact Justin Duff at (910) 290-0031 - jduff@dvauction.com

Bata Brothers/Bell Family

Performance Simmental Bull and Female Sale

February 7, 2020 • 1:00 PM CST

DVAuction
Broadcasting Real-Time Auctions

Sale location: Rugby Livestock Auction, Hwy. 2 West, Rugby, North Dakota

Selling: 65 Purebred Yearling Bulls
4 2-Year-Old Bulls / 12 SimAngus™ Bulls
15 Bred Heifers



Visit us online at:
www.facebook.com/BataBrothersSimmentals
www.facebook.com/bellsedgewoodranch



BBS G11

7 5.1 95 151 .35 6 30 77 \$API: 126 \$TI: 81
Trax Red River E84 x MRL Mr. Pro Bowl 138X
PB – Homo Polled – Non-Diluter – Adj. WW: 835



BELL G74

7 3.1 83 121 .24 3 24 64 \$API: 118 \$TI: 74
MRL Bomber 28E x BBS Miss Cain C5
Top 5% of breed in WW; top 10% for YW

EPDs as of 12/16/19



BBS G22

2 5.8 104 168 .40 5 23 75 \$API: 127 \$TI: 84
LEE The Riddler 323B x MLC Mr Justice W744
PB – Homo Polled – Homo Black – Adj. WW: 814



BBS G4

4 4.9 92 144 .33 4 30 76 \$API: 137 \$TI: 86
CDI Hometown 246A x MRL Ringman 112Z
PB – Homo Polled – Non-diluter – Adj. WW: 743



BBS G81

7 4.8 98 128 .25 6 29 72 \$API: 120 \$TI: 75
BBS Triple Play E228 x BBS Meatball Z19
PB – Homo Polled – Adj. WW: 845



BELL G48

9 2.7 83 123 .25 7 22 62 \$API: 121 \$TI: 74
MRL Bomber 28E x OLF Tgr Lady B11
Top 5% in WW; top 10% in YW; Top 20% in ADG



BELL G5

17 -1.9 85 124 .24 12 23 64 \$API: 166 \$TI: 92
Hook's Beacon 56B x Bell Miss Cowboy Cut E32
Top 1% in MCE; top 2% CE and BW; top 3% WW



BELL G93

11 .6 82 127 .28 8 25 65 \$API: 138 \$TI: 80
KWA Riddler 201D x Bell Miss True Justice E5
Top 4% YW; top 10% WW and ADG; top 15% MCE;

SALE DAY PHONE:
701-776-6393

Reference Sires:

Springcreek Grand Slam	KS Peyton T287
LFE The Riddler 323B	Captain Morgan 11Z
Kuntz Sheriff 8A	MRL Bomber
WFL Westcott 24C	GLS Integrate
CCR Cowboy Cut 402B	MRL Northwestern
RF Red Absolute 307A	Hook's Beacon
Springcreek Limer 52D	KWA Riddler, Mr GD
MRL Elmo 6E	Harvey Red Summit
TNT Tundra D482	Hometown, Zenith
Hooks Bozeman 8B	



Mark 701-331-3055
Joe 701-331-0344
jpbata@polarcomm.com
6322 Highway 35
Adams, North Dakota 58210



Auctioneer: Joe Goggins

Production, Performance, Results

Travis Bell
12787 Cty Rd 19A
Fordville, ND 58231
701-360-1597
Tbell@polarcomm.com

Black Simmental & SimAngus™



32nd Annual Production Sale

Selling 50 Yearling Bulls

KOEPLIN'S BLACK SIMMENTALS

Tuesday, February 4, 2020

2:00pm CT • Kist Livestock • Mandan, ND



614G
Purebred

CCR Wide Range 9005A x SAS/ASF All Star

BD: 2-18-19 BW: 95 WW: 890

CE	BW	WW	YW	MCE	Milk	MWW	API	TI
7.6	3.3	79.6	117	4.8	20.8	60.5	113	69



450G
3/8 SM 5/8 AN

RC Club King 040R x Connealy Right Answer 746

BD: 3-5-19 BW: 95 WW: 928

CE	BW	WW	YW	MCE	Milk	MWW	API	TI
11.7	1.1	77.5	119	5.4	24.3	63.1	123	72



918G
Purebred

MRL Discovery 21A x Olf Odin U5

BD: 2-19-19 BW: 98 WW: 920

CE	BW	WW	YW	MCE	Milk	MWW	API	TI
10.1	2.3	72.4	116	8.1	30.2	66.3	113	68



500G
Purebred

CCR Cowboy Cut 5048Z x Olf Odin U5

BD: 2-2-19 BW: 71 WW: 870

CE	BW	WW	YW	MCE	Milk	MWW	API	TI
12.1	1.7	81.7	119	8.0	28.0	68.8	137	78



173G
Purebred

Ellingson Riddler E734 x Kappes Lucky Man W603

BD: 3-24-19 BW: 92 WW: 843

CE	BW	WW	YW	MCE	Milk	MWW	API	TI
6.4	3.2	70.1	111	5.7	24.1	59.0	123	68



511G
Purebred

CCR Cowboy Cut 5048Z x Olf Odin U5

BD: 2-17-19 BW: 88 WW: 872

CE	BW	WW	YW	MCE	Milk	MWW	API	TI
12.8	1.7	80.4	116	9.0	23.9	64.0	139	78

Planned Mating EPDs

Terry & Marci Koepplin
7035 80th St SW • Elgin, ND 58533

Home: 701-584-3292 • Cell: 701-214-8212
koepplinranch@hotmail.com

Visitors are always welcome at the ranch!

Where Friends Meet...

Sale will be broadcast for online bidding by

DVAuction
Broadcasting Real-Time Auctions

MRL 26th Annual Bull Sale

Selling 180 Bulls
Saturday March 7, 2020

At the Ranch • Carievale, Sask (18 miles North of Sherwood, ND)

Herd Bulls Designed by Ranchers for Ranchers

- All bulls born, bred & developed right here at MRL
- Large sire groups $\frac{1}{2}$ and $\frac{3}{4}$ brothers Penfulls of uniform bulls in every category
- Sight Unseen Buyer's Program (Can't make it sale day? Give us a call. Almost 25% of our bulls sell SUS. Many repeat customers year after year.)
- Semen evaluated and guaranteed
- Free Delivery to the Dakotas and boundary states. We have the expertise to get your bulls delivered hassle free! (Our trailer is most likely going right past your gate.)
- Sound, rugged bulls developed on a high roughage ration (Born, bred and fed to work and stay working)
- Extra age bulls ready to cover some ground. Offering 50 coming 2-year-olds and January/February born yearlings.
- Genetically engineered to excel for the commercial cattleman. Calving ease, performance and packed full of maternal traits.

"The Bull Business" is what we do!

For over 40 years, we have been committed to and focused on providing herd bulls that will excel for commercial cowboys. Over the years, we have listened to our customers to provide herd bulls that work in today's industry under real world ranching conditions. Herd bulls that will sire calves with moderate birth weights, explosive growth, structural soundness with eye appeal and packed full of maternal power. Extra age bulls, Jan/Feb born yearlings and check out the large group of May/June coming 2-year-olds for 2020. Sound, rugged herd bulls that will cover some ground. No fluff, no puff. The top 180 bulls from our highly regarded cowherd of almost 700 mother cows and the most elite herd bulls in the business. Come see for yourself what keeps the commercial cowboys coming back year after year. Give us a call, text or email for a full color catalogue and bull video.

Thank you

to our US buyers the past few years.
25% of our bulls sell to top stockman
across the upper Midwest annually.

U.S. Dollar Advantage

Take advantage of the strong U.S.
dollar with a 25% buying advantage.

The Commercial Cattleman's "One Stop Bull Shop"

For Elite Simmental & Red Angus Genetics

**Call today for a sale catalogue,
bull video or more information!**

McMillen Ranching Ltd.

Box 99 • Carievale, SK

Lee: 306-928-4820 • Lee Cell: 306-483-8067 • Dave Cell: 306-483-8660

Jim: 306-928-4636 • Jim Cell: 306-483-7986 • Fax: 306-928-2143 • Email: mrl@sasktel.net



50 PB Red & Red Blaze Polled Simmental Bulls



50 PB Black Polled Simmental Bulls



40 PB Red & Black Angus Bulls



50 coming Two-Year-Old Bulls
Simmental & Angus



Brink

Simmentals
Fullblood Fleckvieh Cattle and Semen Available

SALE DATE
MARCH 5,
2020

LINEBRED TO CREATE **EXPLOSIVE PERFORMANCE AND PROFIT**



G907 *Diluter FREE
Brink B412 ET x Brink D626 ET



G902 *Diluter FREE
Brink D600 ET x Brink E721



G950 *Diluter FREE
Brink Flex C516 x Brink Hazel X057



G959 *Diluter FREE
Brink Stock D605 x Brink B407 ET

Progeny Data From Brink Fleckvieh

Owner – Creative Genetics

Breeder – Svatos Cattle

97 Steers

87% Choice

7% Prime

Avg. Gain 4 LBS per day

NO yield grade 4s

**Yield was 67.1% –
the highest EVER
reported at JBS**

Owner – Lovejoy Cattle

87 head of steers

12 months of age

Avg. weight #1351

87% Choice

3.05 Yield Grade

**CUSTOMERS
SELLING MORE
WEIGHT IN THEIR
MARKET WINDOW
= MORE PROFIT**

SELLING 50 FULL FLECKVIEH BULLS PRIVATE TREATY MARCH 5TH

ALL BULLS SOLD BY PHONE AUCTION

CALL US TO REQUEST A CATALOG BY MAIL. PERFORMANCE AND ULTRASOUND
DATA AVAILABLE ON ALL BULLS. PICTURES, VIDEOS AND ONLINE CATALOG
AVAILABLE BEGINNING IN FEBRUARY ON OUR WEBSITE: **BRINKGENETICS.COM**

***Diluter Free to Make Those Black Baldies!**

23098 Gunder Rd., Elkader, IA 52043

Jerry – 563-245-2048 or 563-880-1470 cell • Preston – 563-880-2075 • Fax: 563-245-1110

jbrink@alpinecom.net • brinkgenetics.com

\$/M FLECKVIEH CATTLE

JEFF SORENSON
Garretson, South Dakota
sorenson@augie.edu | 605-359-8728
www.smfleckvieh.com

Sires of our 2020 Sale Bulls



Anchor T Legend 7H



Sibelle Arthur 39B



IPU Radium 10A



PHS Bank Roll 345B

YEARLING BULLS FOR SALE BY PRIVATE TREATY
PLEASE VISIT OUR WEBSITE FOR MORE INFORMATION

www.smfleckvieh.com



LaBatte Simmentals

40th Annual Bull & Female Sale
Friday • March 6, 2020 • 1:00 pm

Johnstone Auction Market • Moose Jaw, SK
Guest Consignors: East Poplar Simmentals

Visit our website: www.LaBatteSimmentals.com for information on our program, herd sires, and 2020 bull sale preview and videos in late January.

Sale offering includes 70 Red, Black and Fullblood bulls and 15 red and black polled females.



*IPU 144F—Fullblood Bull
by Southseven Mr Adonis 96Z*



*IPU 7F—Polled Purebred Bull
by IPU 2Y Dillinger 80B*



*IPU 109F—Polled Purebred Bull
by SVS Brooks 669D*

The animals pictured here are examples of those sold in our 2019 sale. They display the **depth, thickness, meat and muscle** emphasized in our breeding program. All our top bulls sell, featuring many generations of polled red and black genetics. The Fullblood bulls are diluter-gene tested, and many of the red and black bulls are homo polled and color tested.

Photos of our 2020 sale bulls will appear in the February 2020 issue ad. We offer free wintering and semen testing, free delivery to central points with paperwork in order. Sight unseen purchase program available.

To discuss your needs, or to request a 2020 catalogue, call or text Barry's cell at 306-815-7900.



*IPU 81F—Polled Purebred Bull
by Wheatland Bentley 630D*



*IPU 118F—Polled Purebred Bull
by Wheatland Durango 656D*



*IPU 161F—Polled Purebred Heifer
by Swan Lake Red Circuit 28D*

LaBatte Simmentals invite our American neighbors to our 40th annual sale. Take advantage of the current US dollar exchange rate. As of mid-December 2019 a \$8,000 bull would only cost you \$6,000 in US funds.

Barry & Brenda LaBatte

P.O. Box 72, Gladmar, SK S0C 1A0

Cell: 306-815-7900 | Email: labatte.simm@sasktel.net

www.LaBatteSimmentals.com

A special *Thank You* to 2019 customers representing US Simmental operations.

We sincerely appreciate the support we have received from our neighbors to the south over the years.



16th Annual "Holiday-Monday" Bull & Female Sale

Monday, February 17, 1 PM Sharp
Ste. Rose Auction Mart, Ste. Rose, MB

— only 3 hours from Bottineau, ND

Over 180 lots sell featuring the most outcross & diverse bloodlines in the Simmental breed.

Bulls who were selected by leading American ranchers in last year's sale, thank you for your support.



AIA 595F

Purchased by Abraham Farms - Hazel, SD



AIA 453F

Purchased by T&M Farms LLC - Hayti, SD



AIA 603F

Purchased by Jacob Bach - Florence, SD



AIA 12F

Purchased by Randy & Stacey Schmitt - Rugby, ND



AIA 460F

Purchased by Nick Stormo - Hayti, SD



AIA 15F

Purchased by Robert Rath - Tuttle, ND



AIA 435F

Purchased by Ty DeWitz - Tappen, ND



AIA 1F

Purchased by Zahn Ranch - Towner, ND



AIA 191F

Purchased by Triple V Ranch - Carrington, ND

*Other bulls purchased by
David & Dawsen Buelgien, New Salem, ND — Erik Finney, Lancaster, MN

Full, half & 3/4 brothers to the bulls pictured above sell in our 2020 sale.



You will only find these kinds of low birth weight, high weaning weight,
curve bender style bulls by shopping north of the 49th parallel at Rendezvous.
Save big with approx. 25% more buying power with the US/Canada dollar.



Watch for our sale catalog online in mid January or call/text for your personal hard copy. With 41 years of raising Simmental seedstock & owning the very best herd sires, you will only find these outcross bloodlines here. Quality in Quantity, add a Rendezvous bull to your program this year. Contact David to discuss your herdbull needs or to try our popular sight unseen program.



David Maquet 204 447-7573 Ste. Rose du Lac, MB • rendezvousfarms@hotmail.com Gerald Maquet 204 447-5037



DOWNLOAD THE CATALOGUE AT WWW.TRANSCONLIVESTOCK.COM

professionally managed by
TRANSCON
Livestock Corp.
Jay Good (403) 556-5563 Darren Paget (403) 323-3985
Glenn Norton (780) 542-0634 Cody Hanny (403) 559-8809



Announcing 2020 Sale Date...

2019 provided one of the most unique and challenging years in agriculture, we felt it to be most beneficial for our customers and operation to combine our spring bull and female sales into one. We cordially invite you to join us at the ranch **APRIL 11, 2020** for a great event consisting of our most exciting set of genetics to date.



Jaron, Kadee & Tatum Van Beek
27905 472nd Ave | Worthing, SD 57077
605-929-3749 | jaronvb09@yahoo.com
Craig Laackmann 712-470-0787

Dakota Ladies Online Genetic Sale **DP ONLINE**
January 28, 2020 hosted by... www.dponlinesales.com
www.hilltopsimmentalsd.com



Annual Production Sale!
Feb. 10, 2020

5:30 p.m. • Kist Livestock, Mandan, ND

Selling **70** Powerful Simmental & SimAngus™ Herd Bulls **40** Simmental & SimAngus™ Bred Heifers!



Contact Us for Info!

KAELBERER SIMMENTALS
Claye & Michelle Kaelberer Family
701-220-3124 • New Salem, ND
www.CattleSalePage.com/EdgeoftheWest

SRF SIMMENTALS
Todd & Kelly Finke
701-240-7711 • Berthold, ND

KINN SIMMENTALS
Tyler & Tiffany Kinn Family • 701-220-5276
Davis & Amber Kinn Family • 701-400-5108
Turtle Lake, ND



BULL & FEMALE SALE

On the Ranch, Russell, Manitoba

Wednesday, February 19, 2020

Black and Red Simmental, Angus and Simm-Angus Bulls

70 Coming Two Year Old Bulls & Elite Females






**Miles & Bonnie Glasman
Jared & Chelsey Glasman**
Home: 204.773.3279
Miles' Cell: 204.773.6275
Jared's Cell: 204.796.0999

mjsimmentalangus@gmail.com

www.mjsimmentalangus.com

mlg@glasmanfarms.com

www.glasmanfarms.com

find us on   

Sale Managed By:
T Bar C Cattle Co. Ltd.
Chris: 306-220-5006
DVAuctions 402-316-5460



Matthew & Leanne Glasman
Home: 204.773.3209
Matt's Cell: 204.773.6055

When it hurts
TO LET THEM GO, YOU KNOW
They're Good!

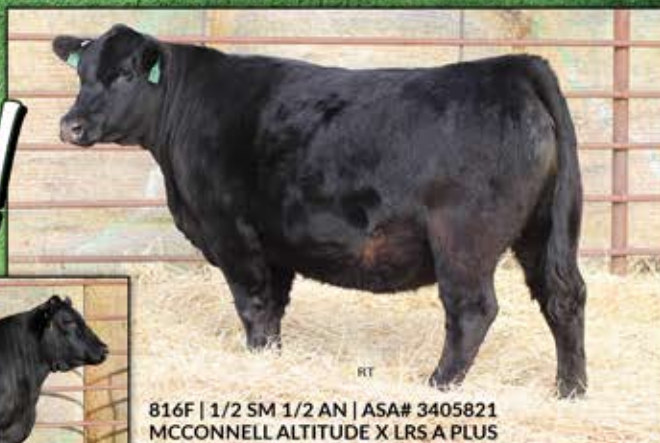
SELLING OUR TOP TEN BRED HEIFERS, AI BRED, DUE WITH HEIFER CALVES!



839F | 1/2 SM 1/2 AN | ASA# 3405631
MAR INNOVATION X DIKEMANS SURE BET



8035F | PB SM | ASA# 3405879
3C PASQUE X TNT DUAL FOCUS



816F | 1/2 SM 1/2 AN | ASA# 3405821
MCCONNELL ALTITUDE X LRS A PLUS

JOIN US FOR OUR 27TH ANNUAL BULL SALE!
FEBRUARY 13, 2020 AT THE RANCH

Selling 130 Simmental & SimAngus Bulls,
10 Select Females & One Proven Donor!

LRS

LASSLE RANCH SIMMENTALS

For over 40 years, Lassle Ranch Simmentals has focused on problem free, performance proven Simmental and SimAngus genetics. Let us help you get on the road to success! Please visit our website to learn more about our program, www.lassleranchsimmentals.com

Clay & Marianne Lassle // 406-486-5584
Ryan & Sarah Thorson // 406-694-3722

42 Road 245 Glendive, MT 59330
Email: lsbeef@midrivers.com

www.lassleranchsimmentals.com

SUPERIOR
Productions
SLA-TV

Dish Network Channel 997

Thank you!

to all those who inquired, bid or purchased
our genetics at the ND Simmental Classic Sale!



SRF Miss 840F

Thank you to Leapaldt Simmentals, ND



SRF Miss 835F

Thank you to Ed Fischbach, SD



SRF Miss 809F

Thank you to Kenner Simmentals, ND

Watch for more bred
heifers like these at the

EDGE of the WEST

Sale, February 10, 2020
Kist Livestock • 5 p.m.

FINKE
CATTLE

TODD & KELLY, CARTER, ABBY, ANNA & CASEN • 701-453-3105 • 701-240-7711
35500 114th Ave NW • Berthold, ND 58718 • www.FinkeCattle.com

HART SIMMENTALS Power Bull Sale

PROUDLY HOSTING OUR 45TH ANNUAL SALE!

Thursday, February 6, 2020

12:00 Noon Sharp • Frederick, SD

ALL BULLS SELLING WERE BRED, BORN AND DEVELOPED HERE ON THE RANCH!



HART MOST WANTED 083G • PB SM
Homo Black, Hemo Polled: Act BW: 87 Adj WW: 918
GLS INTEGRATE Z3 X WLB ROUGHNECK 366R 377W
CE 7, BW 3.9, WW 100, YW 154, MCE 5, MILK 19,
MWW 69, API 102, TI 81



HART POWERHOUSE 074G • PB SM
Homo Black, Hetro Polled: Act BW: 85 Adj WW: 866
HSR POWER PLUS D206 X WLB ROUGHNECK 366R 377W
CE 6, BW 3.3, WW 96, YW 148, MCE 5, MILK 27,
MWW 75, API 121, TI 79



074G



HART ASSAULT 059G • PB SM
Hetro Black, Hemo Polled: Act BW: 87 Adj WW: 802
HSR POWER PLUS D206 X WELSH'S WARSAW 312Z
CE 8, BW 4.0, WW 94, YW 145, MCE 6, MILK 23,
MWW 70, API 128, TI 79



HART QUANTUM 067G • PB SM
Homo Black, Hemo Polled: Act BW: 85 Adj WW: 921
WS EQUALIZER E1 X WELSH'S WARSAW 312Z
CE 8, BW 2.9, WW 79, YW 114, MCE 3, MILK 19,
MWW 58, API 121, TI 72

THE MOST POWERFUL SET OF PUREBRED SIMMENTAL BULLS IN ONE OFFERING!



**HART GLADIATOR 101G
PB SM**

Homo Black, Hemo Polled
Act BW: 85 Adj WW: 898
BBS TRUE JUSTICE 810 X
WS ALL AROUND Z35
CE 11, BW 1.3, WW 88, YW 134, MCE 7,
MILK 27, MWW 71, API 141, TI 86



HART DAKOTA 019G • PB SM
Hetro Black, Hemo Polled: Act BW: 78 Adj WW: 874
DCR EXCLUSIVE E28 X HART MERRITT 155B
CE 13, BW 2.3, WW 89, YW 142, MCE 7, MILK 33,
MWW 77, API 125, TI 76



HART TURNSTONE 124G • PB SM
Homo Black, Hemo Polled: Act BW: 83 Adj WW: 842
RUBY'S TURNPIKE 771E X WS ALL AROUND Z35
CE 9, BW 4.0, WW 93, YW 141, MCE 5, MILK 26,
MWW 73, API 125, TI 81

**HART ROADHOUSE 328G
PB SM**

Homo Black, Hetro Polled
Act BW: 80 Adj WW: 878
DKSR HOLLOW POINT C66 X
JF REAL WORLD 050X
CE 10, BW 2.5, WW 74, YW 115, MCE 5,
MILK 23, MWW 60, API 121, TI 73



Bulls sell with performance data and genomic enhanced EPDs.

SELLING 90 PUREBRED SIMMENTAL BULLS

★ **HART SIMMENTALS** ★

Kerry, Mara, Justin, Jes, Travis, Shelby & Jamie
4hooves@nvc.net • Kerry 605-252-2065
Justin 605-216-6469 • Travis 605-252-0894

Catalog Online at
www.ebersale.com

DVAuction
Broadcasting Real-Time Auctions

Sale Managed by:

Eberspacher
ENTERPRISES INC.

Val & Lori Eberspacher
Office 507-532-6694
Cell 612-805-7405
sales@ebersale.com

CALENDAR OF EVENTS

JANUARY 2020

- 3 SK Cattle, Open House — Frederick, SD
- 18 American Simmental Association Annual Meeting — Denver, CO
- 20 National Western "The One" Simmental Sale — Denver, CO
- 22 Sioux Falls Farm Show and Sale — Sioux Falls, SD
- 24 Ellingson Simmentals Annual Production Sale — Dahlen, ND
- 25 A/H Cattle Company Annual Bull Sale — Aberdeen, SD
- 25 Double J Farms Annual Private Treaty Bull Sale — Garretson, SD
- 25 SK, Cattle, Bids Close at 4:30pm — Frederick, SD
- 26 KnH Simmentals Bull & Female Online Sale — Berthold, ND
- 28 Dakota Ladies Online Genetic Sale — Hosted By DP Sales Online

FEBRUARY 2020

- 1 Black Hills Stock Show and Sale — Rapid City, SD
- 1 Klain Simmental Ranch Annual Production Sale — Turtle Lake, ND
- 1 Turn In Bull Sale — Sioux Center, IA
- 1 Steffan Simmentals Annual Bull Sale — Killdeer, ND
- 2 Hartman Cattle Company Simmental Bull Sale — Tecumseh, NE
- 2 Kline Simmental Annual Bull Sale — Hurdsville, ND
- 3 Wicks Cattle Annual Bull Sale — Richardton, ND
- 4 James Creek Simmental Bull & Female Sale — Heaton, ND
- 4 Koepplin's Black Simmentals Annual Production Sale — Mandan, ND
- 5 Begger's Diamond V Ranch Bull Sale — Wibaux, MT
- 5 Lazy C Diamond Simmental Ranch — Kintyre, ND
- 6 Hart Simmentals Beef Builder Bull Sale — Frederick, SD
- 6 Rust Mountain View Ranch's Annual "Ace in the Hole" Production Sale — Mercer, ND
- 6 Stavick Simmentals "King of the Range" Sale — Aberdeen, SD
- 7 Watertown Winter Farm Show & Sale — Watertown, SD
- 7 Bata Brothers/Bell Family Bull and Female Sale — Rugby, ND
- 7 Kunkel Simmentals Annual Production Sale — New Salem, ND
- 8 Kenner Simmental Ranch Annual Production Sale — Leeds, ND
- 8 Rydeen Farms Annual Production Sale — Clearbrook, MN
- 9 Rockin R Farm Annual Bull Sale — Bloomington, WI
- 10 Benda Ranch Annual Bull Sale — Kimball, SD
- 10 Dakota Power Bull Sale — Valley City, ND
- 10 Edge of the West Bull & Female Sale — Mandan, ND
- 10 Ludvigson Stock Farms Dakota Bull & Female Sale — Center, ND
- 11 Bichler Simmentals Bull & Female Sale — Linton, ND
- 11 Werning Cattle Company's Annual Production Sale — Mitchell, ND
- 12 Sys Simmental Annual Bull Sale — Douglas, ND
- 12 Traxinger Simmental Annual Bull Sale — Houghton, SD
- 13 Lassel Ranch Simmentals Sale — Glendive, MT
- 14 Healy Simmental Annual Production Sale — Yankton, SD
- 14 TNT Simmentals Bull Sale — Almont, ND
- 15 Double T Simmentals Annual Bull Sale — Turtle Lake, ND
- 15 Ekstrum Simmentals Annual Bull Sale — Kimball, SD
- 15 Hoiby Simmental Bullnanza Sale — McGregor, ND
- 16 Bonchuk Farms Bull Sale — Virden, MB
- 17 Rendezvous Farms Annual Bull & Female Sale — Ste. Rose, MB
- 18 Gill Red Angus "You Buy We Bid" Bull Sale — Timber Lake, SD
- 18 Quandt Brothers/VJT Ranch "Power By Design" Sale — Oakes, ND
- 19 M & J Farms Simmental & Angus Bull & Female Sale — Russell, MB
- 21 Dakota Xpress Annual Bull and Female Sale — Mandan, ND
- 21 R & R Cattle Company's Annual Production Sale — Chamberlain, SD
- 22 Flittie Ranch Annual Bull Sale — Aberdeen, SD
- 22 Lewis Farms Annual Bull Sale — Spruce Grove, AB
- 22 Meyer 7M Simmentals Private Treaty Sale — Elgin, ND
- 24 Lehrman Family Simmental Annual Sale — Spencer, SD
- 25 Double Bar D Best of Both Worlds Sale — Grenfell, SK
- 25 Larson's XL Simmentals Annual Bull Sale — Mandan, ND
- 26 Rancier Farms Herdmaster Bull Sale — Camrose, AB
- 26 C Diamond Ranch Annual Bull Sale — Dawson, ND

MARCH 2020

- 2 Windy Creek Cattle Co Annual Sale — Aberdeen, SD
- 3 Ashworth Farm & Ranch Annual Bull Sale — Oungre, SK
- 3 Canadian Central Bull and Female Sale — Winnipeg, MB
- 4 Doll Ranch's Annual Bull Sale — Mandan, ND
- 5 Keller's Broken Heart Ranch Production Sale — Mandan, ND
- 5 Brink Simmentals Annual Bull Sale — Elkader, IA
- 6 Eichacker Simmentals Annual Bull Sale — Salem, SD
- 6 LaBette Simmentals Annual Bull & Female Sale — Moose Jaw, SK
- 7 M&J Ranch/G&D Simmentals Annual Bull Sale — Devils Lake, ND
- 7 McMillen Ranching Production Sale — Carievale, SK
- 8 Northwest ND Select Simmental Sale — Stanley, ND
- 8 Rocky Knoll Cattle Annual Bull Sale — Highmore, SD
- 9 Rebels of the West Bull Sale — Virden, MB
- 10 7N Simmental Ranch — Medina, ND
- 15 Oakview-Perkin-Triple R Simmental Bull Sale — Brandon, MB
- 15 Proudly Western Bull Sale — Whitewood, SK
- 16 Wilkinson Farms "Breeding for the Future" Bull Sale — Montpelier, ND
- 18 TSN Simmentals Annual Bull Sale — Platte, SD
- 20 3C Christensen Ranch Annual Production Sale — Wessington, SD
- 20 Wheatland Cattle Company Bull Sale — Bienfait, SK
- 24 WLB Livestock Annual Simmental Sale — Douglas, MB
- 25 Hall Stock Farm Annual Sale — Berthold, ND
- 29 Elliott Livestock/Tri-E Simmentals Bull Sale — Clifford, ND

APRIL 2020

- 7 Nelson Livestock Company — Wibaux, MT
- 8 Thomas Ranch Annual Bull Sale — Harrold, SD
- 11 Hilltop Simmentals, Spring Turnout — Worthing, SD
- 14 Aufforth Northern Plains Simmentals — Rugby, ND
- 20 Christensen Simmentals Production Sale — Wessington Springs, SD

JULY 2020

- 5 - 11 AJSA National Classic — Grand Island, NE
- 17 - 25 North Dakota State Fair — Minot, ND

SEPTEMBER 2020

- 3-7 — SD State Fair

PRIVATE TREATY SALES

- CK Cattle, Highmore, SD
- Dakota Simmental, Colome, SD
- Ford Farms, Bruce, SD
- Junck's Simmental, Sioux City, IA
- Miller Cattle Co., Howard, SD
- Rolling Prairie Simmentals, Glenfield, ND
- S/M Fleckvieh, Garretson, SD
- Schmidt Simmentals, Center, ND
- Spirit Ranch, Zap, ND
- Stangeland Simmentals, Glenfield, ND
- Stanley Martins Farms, Postville, IA
- Thyen SimAngus, Hayti, SD
- Wager Cattle, Gettysburg, SD
- Western Cattle Source, Crawford, NE
- Wollmuth Ranch, Moffit, ND
- Vander Wal Simmental, Bruce, SD
- Zimmer Family Simmentals/BNC Livestock, Clarissa, MN

ADVERTISING INDEX

3C Christensen Ranch	5	Eichacker Simmentals	19	Klain Simmental Ranch	24	Quandt Brothers	IFC
Bata Brothers Simmentals	31	Ekstrum Simmentals	26	Kline Simmental Ranch	28	R&R Cattle Company	11
Begger's Diamond V Ranch	38	Ellingson Simmental	27	Koepplin's Black Simmentals	32	Rendezvous Farms	37
Benda Ranch	25	Finke Cattle	40	Kunkel Simmentals	29	Rydeen Farms	3
Bichler Simmentals & Red Angus	44	Glasman Farms	39	LaBette Simmentals	36	S/M Fleckvieh Cattle	15
Brink Simmentals	34	Hart Simmentals	41	Lassle Ranch Simmentals	40	SK Cattle	35
Dakota Express	IBC	Hartman Cattle Company	20	Lazy C Diamond Ranch	7	Stavick Simmental	21
Double J Farms	22-23, Center	Hilltop Simmentals	38	Lehrman Family Simmentals	4	TNT Simmentals	16
Double T Simmental	6	Hoiby Simmental Ranch	10	M&J Farms	39	Traxinger Simmental	43
Edge of the West Sale	38	Keller Broken Heart Ranch	17	McMillen Ranching Ltd.	33	Werning Cattle Company	13
Edgewood Ranch	31	Kenner Simmental Ranch	BC	NLC Simmental Ranch	5	Wilkinson Farms Simmentals	30

Traxinger

simmental

Annual Production Sale

FEBRUARY 12, 2020

1 p.m. • At the Ranch • Houghton, SD

50 Simmental & SimAngus™ Bulls

Featuring sons of:



COLORADO • ASA#: 3271382

Semen Available!



TRAX'S RED RIVER • ASA#: 3332961

Semen Available!

Owned by Stangeland Simmental



LFE THE RIDDLER • ASA#: 3173936



KS LITTLE JOHN • ASA#: 2977402

Semen Available!

Traxinger
simmental



MIKE & TERRI TRAXINGER • 605-294-7227

MICHAEL TRAXINGER • 605-377-4110

E-mail: mtrax@nvc.net

www.TraxingerSimmental.com

BICHLER

SIMMENTALS & RED ANGUS



BCLR MISS BALDY E704 • ASA#: 3322997
Newest addition to the Bichler donor pen and also the pick-of-the-herd flush by Lazy C Diamond Ranch, ND and Rydeen Farms, MN.



TJ MS 38W • ASA#: 2529932
Proven outcross donor that has raised many high-sellers for the Triangle J Ranch, NE. We are offering four sons and the pick of her heifer calves sired by CDI Authority 77X.

Join us
Feb. 11, 2020

1 P.M. - AT THE RANCH
LINTON, N.D.

55 Bulls
45 Females

SIMMENTAL • SIMANGUS™ • RED ANGUS



BCLR ALAMO F552-3 • ASA#: 3480640
High-selling bull of our 2019 sale.
Sold to Kenner Simmentals, ND.



BCLR ARTILLERY E21-3 • ASA#: 3322964
High-selling black bull of our 2018 sale.
Owned with Tom Brothers, TX.



BCLR CASH FLOW C820 • ASA#: 3071303
High-selling bull in our 2016 sale and a recent addition to the Genex line-up.



BCLR HEARTLAND E130 • ASA#: 3322925
High-selling red bull in our 2018 sale.
Sold to Crosshairs Ranch, ND.



BCLR AMBITION E301 • ASA#: 3322973
Purchased in 2018 by Wheatland Cattle, CA.



BCLR MISS AMBITION E731 • ASA#: 3322935
High-selling red heifer in 2019.
Sold to Doll Farms, ND.

Quality centered
around the
COW HERD

BICHLER
SIMMENTALS & RED ANGUS

DOUG & MARIA BICHLER • Linton, N.D.

701 254-4306 • 701 226-4068

www.bichlersimmentals.com • [f](https://www.facebook.com/BichlerSimmentals) /Bichler Simmentals

STACK THE DECK



in your favor

with maternal cows that produce performance bulls, and generate extra pounds, come sale day.

Join us for our Annual Sale

Feb. 21, 2020

Kist Livestock, Mandan, ND

140 Bulls

Red · Black · Simmental · SimAngus™

50 Bred Heifers



Kevin Hansen Family
701-720-6551

Wade Staigle Family
701-226-6464

[f /Dakota Xpress Sim Genetics](#)

www.dakotaxpress.com



KENNER SIMMENTAL RANCH

WITHOUT COMMITMENT NOTHING HAPPENS.

Over the past 40 years we have committed to performance and longevity; for our customers and our cow herd. We expect our cattle to go home and work for you but we're also invested in helping you reach your operation's goals. This business is more than cattle, it's about helping ensure and expand your livelihood. We're committed to quality and we're committed to you.



G477 - 1/2

S Powerpoint x GW-WBF Substance / EPDs 15 -0.9 73 110 8 23 60 API 150 TI 84
Over 30 black SimAngus bulls sell! - 1/2 & 3/4's



G198B - PB

Colorado Bridle Bit x TNT Red Eye
EPDs 11 -0.9 65 103 5 34 66 API 138 TI 76
Over 30 black Purebred bulls in the offering!



G126 - PB

KWA Red Mountain x KS Penny X395 (KS Saturn)
EPDs 11 1.4 67 101 9 33 66 API 111 TI 66
Several full and maternal brothers to G126 sell!



G220 - 3/4

RFS Bulletproof x HXC Conquest
EPDs 8 1.9 84 128 6 25 67 API 129 TI 80
Selling many red SimAngus - 1/2, 3/4 & 5/8's



Roger, Jeanette & Erika Kenner
5606 57th St NE Leeds, North Dakota 58346
Roger 701-466-2800 / Erika 406-581-1188
erika.kenner@gmail.com
Herdsmen, Bryan Leapaldt 701-739-8764

24TH ANNUAL PRODUCTION SALE

FEBRUARY 8, 2020 // 1:00 PM

AT THE RANCH - LEEDS, ND

Selling 120 Bulls & 65 Bred Heifers
Black & Red - Purebred, SimAngus[®] & Red Angus

WWW.KENNERSIMMENTAL.COM