

South Dakota

SIMMENTELLER

North Dakota

& SIMMENTAL SCENE

January 2021





7TH ANNUAL HARTMAN CATTLE COMPANY



# SIMMENTAL BULL SALE



FEBRUARY 7, 2021 | 2:00 PM | TECUMSEH, NE



LOT 1 | MLJM MUCHO DINERO 17H  
SIRE: PILGRIM | ASA: 3830013



LOT 4 | KC2 NET PROFIT  
SIRE: PROFIT | ASA: 3808067



LOT 14 | GPG CAPITAL 263H  
SIRE: CASH FLOW | ASA: 3802188



LOT 16 | GPG ROYALTY 219H  
SIRE: CASH FLOW | ASA: 3802190



LOT 17 | BFJV RAMPAGE H218  
SIRE: CASH FLOW | ASA: 3829411



LOT 27 | TL REVENANT 35  
SIRE: LEDGER | ASA: 3829823



LOT 35 | LKCC J DUTTON 29H  
SIRE: LEGEND | ASA: 3829408



LOT 38 | KTE FRKG RESET 825H ET  
SIRE: RIGHT TIME | ASA: 3830433



LOT 39 | GPG SPECTRUM 601H  
SIRE: FOCUS | ASA: 3802189



Hartman Cattle Company  
Mike Hartman (402) 440-6825  
Dalton Hartman (402) 440-6469  
Jared Niedermeyer (402) 269-5803  
[WWW.HARTMANCATTLECO.COM](http://WWW.HARTMANCATTLECO.COM)



sale management by  
**INNOVATION**  
AgMarketing, LLC  
Graham Blagg (530) 913-6418  
Call or text to request a catalog  
[WWW.INNOVATIONAGMARKETING.COM](http://WWW.INNOVATIONAGMARKETING.COM)





[www.NorthDakotaSimmental.com](http://www.NorthDakotaSimmental.com)

**Bryan Leapalddt, Leeds..... President**  
(701) 739-8764 ..... bleapalddt@gmail.com

**Kelly Hanson, Hannaford..... Director**  
(701) 789-1391 ..... kelly.hanson@centralplainsag.net

**Kim Myers, Kathryn .... Secretary/Treasurer**  
(701) 308-1018 ..... gkmyers@outlook.com

**Doug Bichler, Linton..... Director**  
(701) 254-4306 ..... dougbichler@hotmail.com

**JR Aufforth, Bowbells..... Director**  
(701) 339-1880 ..... npsimm@gmail.com

**Pat Thorson, Kindred ..... Director**  
(701) 371-8230 ... pat.thorson@westcentralag.com

**Davis Kinn, Turtle Lake ..... Director**  
(701) 400-5108 ..... dkinn10@hotmail.com

**Wyatt Hansen..... Director**  
(701) 720-4850 ..... wyattnhansen@gmail.com

**Lyndon Hoiby ..... Director**  
(701) 641-1083 ..... hoibysim@nccray.com

**Jason Quandt ..... Director**  
(701) 710-0080 .... jason@quandtbrothers.com



[www.SouthDakotaSimmental.com](http://www.SouthDakotaSimmental.com)

**Chris Effling, Highmore ..... President**  
(605) 769-0142 .. ckeffling@venturecomm.net

**Bridget Twedt, Beresford .. Vice President**  
(605) 777-5404 ..... bridget.twedt@k12.sd.us

**Kevin Blagg, Salem ..... Treasurer**  
(605) 240-0015 ..... kblagg@firstdakota.com

**Colton Buus, Canova ..... Secretary**  
(605) 214-3532 ..... colton.buus@gmail.com

**Harley Cable, Pukwana ..... Director**  
(605) 680-0845 ..... hdcable@midstatesd.net

**Brett Tostenson, Highmore ..... Director**  
(320) 226-3915 ..... blacksandranch@gmail.com

**Clay Duxbury, St. Lawrence ..... Director**  
(605) 461-1494 ..... jackpotcattle@yahoo.com

**Mark Thyen, Hayti..... Director**  
(605) 520-0575 ..... tbirdlab@itctel.com

# South Dakota SIMMENTELLER & North Dakota SIMMENTAL SCENE

**Editor.....** Tamra Heins, New Salem, ND  
(701) 391-6431 · tamra@strategicconcepts.biz

**Design.....** Sheyna Strommen, Fort Rice, ND  
(701) 290-3886 · strommen@westriv.com

The following terms and conditions have been agreed on by the North Dakota & South Dakota Simmental Association's Board of Directors and the Publication Committee:

## Advertising Space Rates

Size .....	4C
Full Page: .....	\$625
1/2 .....	\$450
1/4 Page .....	\$250
Business Card.....	\$200/year

## Advertising Deadlines

Issue.....	Deadline
January .....	Dec. 15, 2020
February .....	Jan. 15, 2021
November.....	Oct. 15, 2021

**Terms:** All advertising accounts are due and payable as invoiced. Interest charges of 1% per month will be assessed to accounts that are 30 days past due.

**Delinquent Advertiser's Account:** Advertisers knowingly and expressly agree and consent that, whenever accounts receivable for an advertiser have not been paid as of 90 days from date involved, advertising privileges will be suspended until full payment has been received.

**Copy Changes:** Alterations in advertising copy, if requested after closing dates, will be permitted only if time allows.

The North Dakota and South Dakota Simmental Associations and this publication reserve the right to refuse any advertising copy at our sole discretion. The North Dakota and South Dakota Simmental Associations and this publication assume no responsibility for the accuracy of the advertising content submitted. Advertisers assume all responsibility for the accuracy and truthfulness of submitted advertising containing pedigrees or statements regarding performance.

**Editorial Content:** Opinions expressed are those of the writer and not necessarily those of the North Dakota and South Dakota Simmental Associations or of this publication. Photographs and manuscripts are welcome, but no responsibility is assumed either while in transit or while in this office.

**About the Cover:** Photo courtesy of Luke Keller, Keller's Broken Heart Ranch, Mandan, ND.



# DAKOTA POWER

## SIMGENETIC BULL SALE

MONDAY, FEBRUARY 8, 2021 | VALLEY CITY, ND

SELLING 80 YEARLING BULLS & 15 BRED HEIFERS  
RED & BLACK SIMMENTAL & SIMANGUS CATTLE



ASA# 3764260 | ADJ BW: 81 | ADJ WW: 790  
J-J ZINSER 514C x S A V FINAL ANSWER 0035  
EPDs 12 1.3 102 150 7 22 73 API 132 TI 90



ASA# 3764358 | ADJ BW: 70 | ADJ WW: 782  
HOOK'S DELEGATE 64D x 5L OUT IN FRONT 1701-457B  
EPDs 15 -1.5 93 148 9 34 81 API 142 TI 93



ASA# 3764332 | ADJ BW: 94 | ADJ WW: 866  
TNT UNION D385 x LFE THE RIDDLER 323B  
EPDs 8 2.4 110 172 6 24 79 API 130 TI 95



ASA# 3764336 | ADJ BW: 94 | ADJ WW: 930  
LFE THE RIDDLER 323B x TRIPLE C SINGLETARY S3H  
EPDs 6 4.8 113 176 5 29 86 API 140 TI 100



ASA# 3764342 | ADJ BW: 71 | ADJ WW: 807  
TNT UNION D385 x SPRINGCREEK GRAND SLAM  
EPDs 9 2.9 89 140 6 19 63 API 128 TI 81



ASA# 3764312 | ADJ BW: 93 | ADJ WW: 854  
CDI HOMETOWN 246A x WS PRIME BEEF Z8  
EPDs 9 3 104 158 5 36 87 API 146 TI 97



ASA# 3814361 | ADJ BW: 78  
LRS GRADE BREAK 114B x GIBBS 0601X RAISINCAIN  
EPDs 10 1.6 81 125 6 24 64 API 135 TI 82



ASA# 3814317 | ADJ BW: 78  
TNT UNION D385 x TNT ZINK Z276  
EPDs 10 1.5 91 143 5 23 69 API 133 TI 87



ASA# 3814353 | ADJ BW: 101  
R PLUS RELOAD 2006Z x HOOKS/KS SEQUOIA 35S  
EPDs 3 5.8 82 122 2 21 62 API 110 TI 73

VIEW VIDEOS  
AND BID ONLINE!

**DVAuction**  
Broadcasting Real-Time Auctions



CONTACT US TODAY FOR MORE  
INFORMATION OR A CATALOG!

Triple H Simmentals  
Kelly & Bryan Hanson  
701.789.1391 or 701.789.0655  
[www.triplehsimmentals.com](http://www.triplehsimmentals.com)

Black Tie Simmentals  
Pat & Lori Thorson  
701.371.8230  
[www.blacktiecattle.com](http://www.blacktiecattle.com)



# HART SIMMENTALS

## POWER BULL SALE

Thursday, February 4, 2021 • 12:00 Noon Sharp  
At the farm 2 miles south of Frederick, SD

ONE  
OF THE  
COUNTRY'S  
LARGEST  
SELECTIONS  
OF PUREBRED  
BULLS!



### HART MIDNIGHT MOON 031H • 3727250 PB SM

Black, Polled Act BW: 71 Adj WW: 815  
WHF ECLIPSE E35 X  
DKSR HOLLOW POINT C66  
CE 12, BW 0.8, WW 91, YW 136, MCE 6,  
MILK 29, MWW 74, API 130, TI 84

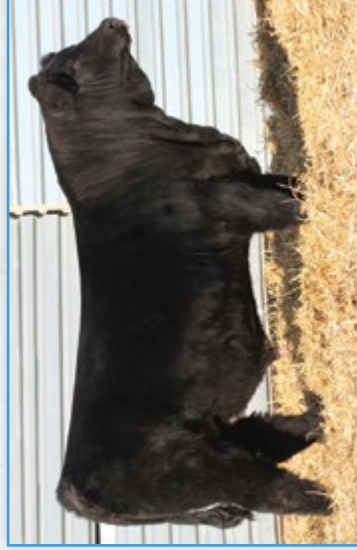


### HART WHIPLASH 096H

#### 3727367 PB SM

Black, Polled Act BW: 78 Adj WW: 859  
HART STATE OF WAR 056C X  
WLB ROUGHNECK 366R  
CE 13, BW 1.1, WW 92, YW 134, MCE 8, MILK 36,  
MWW 82, API 134, TI 84

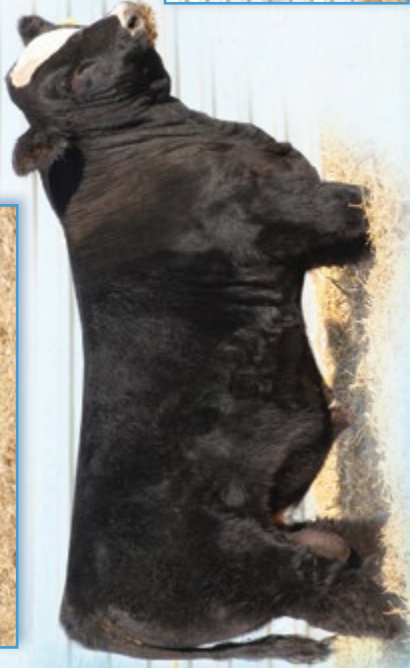
**ALL CATTLE  
GENOMIC  
ENHANCED!**



### HART HEAD OF STATE 059H

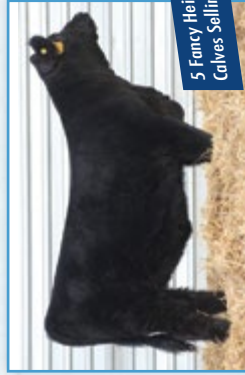
#### 3727532 PB SM

Black, Homo Polled Act BW: 74 Adj WW: 804  
HART STATE OF WAR 056C X BBS TRUE JUSTICE B10  
CE 13, BW 0.7, WW 90, YW 137, MCE 8, MILK 29, MWW 74,  
API 138, TI 82



### HART HOG WILD 285H • 3727637 PB SM

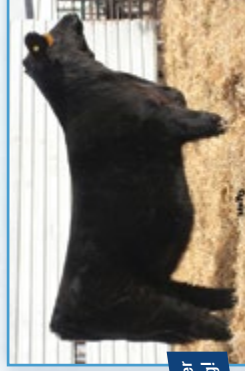
Homo Black, Homo Polled Act BW: 78 Adj WW: 782  
HPE RIGHT TO LOVE 365D (CHOLLO) X GLS INTEGRATE Z3  
CE 14, BW 1.0, WW 78, YW 118, MCE 8, MILK 24,  
MWW 63, API 124, TI 78



5 Fancy Heifer  
Calves Selling!

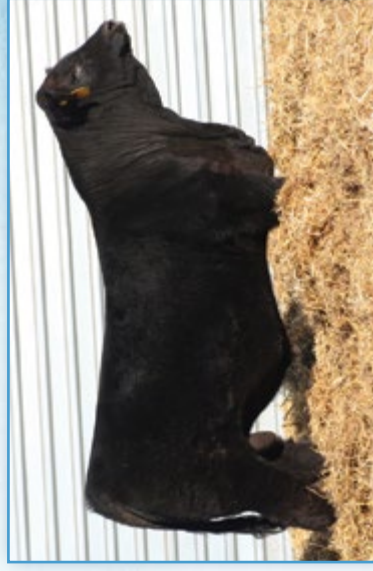
### HART HEARTTHROB 064H • 3727361 PB SM

Homo Black, Homo Polled Act BW: 71 Adj WW: 607  
HART WAR LORD 036F X W/C UTAH 534A  
CE 11, BW 1.0, WW 69, YW 99, MCE 5, MILK 27, MWW 61,  
API 121, TI 69



### HART HEADLINER 181H • 3727507 PB SM

Black, Polled Act BW: 67 Twin Adj WW: 656  
HSR POWER PLUS D206 X JF RANCHER 222Z  
CE 10, BW 3.0, WW 87, YW 134, MCE 7, MILK 24,  
MWW 68, API 125, TI 78



### HART ENGINEER 208H • 3727670 PB SM

Black, Homo Polled Act BW: 78 Adj WW: 788  
QB LAST FRONTIER F42 X CCR COWBOY CUT 5048Z  
CE 10, BW 2.2, WW 83, YW 126, MCE 4, MILK 24,  
MWW 65, API 126, TI 80

PROUDLY HOSTING OUR 46TH ANNUAL BULL SALE!

SELLING 100 PUREBRED SIMMENTAL BULLS

**BULLS WILL BE PENNED ON DISPLAY AT THE FARM PRIOR TO AND ALSO SALE DAY. • VIEW FULL SALE LINE UP AT [WWW.EBERSALE.COM](http://WWW.EBERSALE.COM)**

**Performance data and  
genomic enhanced EPDs.**  
ALL BULLS SELLING WERE BRED, BORN  
AND DEVELOPED HERE ON THE RANCH!

★ **HART SIMMENTALS** ★  
Kerry, Mara, Justin, Jes, Travis, Shelby & Jamie • 4hooves@nvc.net  
Justin 605-216-6469 • Travis 605-252-0894

Online Bidding  
available at:

**DVAuction**  
Broadcasting Real-Time Auctions

Sale Managed by:

**Eberspacher**  
ENTERPRISES INC.

Val & Lori Eberspacher  
Office 507-532-6694  
Cell 612-805-7405  
sales@ebersale.com



## Hein's Sight

I hate winter. Anyone who knows me, knows this. I even started my own #wintersucks hashtag on social media when complaining about pushing snow, frozen waterers and icy roads. I have to work hard to find something good about January but I am grateful the days are slowly starting to get longer. We have enjoyed a fairly mild start to Winter in the Dakotas and that certainly helps with fuel and feed costs. It also helps everyone's attitude!

January kicks off the bull sale season in the Dakotas. The Fall Sales have been very good and I am optimistic that will continue through the sale season. It's also a good time to make a strategic plan for the upcoming months and some contingency plans for when those plans don't work. If we have learned anything from 2020, its that we need to be ready to adapt on a moment's notice.

I really enjoyed attending the annual meetings of both the ND and SD Simmental Associations. I like meeting new people and it is nice to put a face

with the email address that I see in my inbox. We had a record setting auction for the prime pages of the magazine. Thanks to all who helped make that such a huge success.

We hope you enjoy the January issue. I try hard to balance advertising with content while still keeping the magazine profitable for the associations. I am always looking for story ideas

and welcome information about upcoming events that interest purebred and commercial cattle producers.

I am looking forward to working with you in 2021.



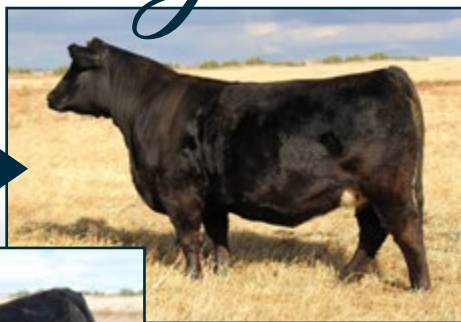
Tamra Heins



From Left: Clayton, Tamra, Tony and AJ Heins

# Thank you!

Thank you to **Erika Kenner & Bryan Leapaltdt, ND**, for their purchase of SRF Miss 940G!



Thank you to **Jessie Vallejo, KS**, for his purchase of SRF Miss 961G!

JOIN US FOR THE  
**EDGE of the WEST**  
*Production Sale*

**Feb. 9, 2021**

1 p.m. • Kist Livestock, Mandan, ND

*Selling*

**85**

Simmental & SimAngus™  
Herd Bulls

**65**

Beautiful Bred Heifers  
**Special Feature:** Complete  
Dispersal of Roger & Susan Finke's  
Black Bred Heifers!

**SRF SIMMENTALS** :: Todd & Kelly Finke Family :: 701-240-7711 :: Berthold, ND





**H32**

LFE The Riddler 323B x Ellingson Ms. Morgan E732  
 CE BW WW YW ADG MCE Milk MWW \$API \$TI  
 6 4.1 102 165 .39 5 25 76 129 90  
 Adj. WW: 791 lbs.



**H36**

Ellingson Ultimate F830 x Ellingson Ms. United E70  
 CE BW WW YW ADG MCE Milk MWW \$API \$TI  
 7 4.8 112 184 .46 3 30 86 112 90  
 Adj. WW: 844 lbs.



**H06**

Hook's Eagle 6E x Ellingson Riddler F8062  
 CE BW WW YW ADG MCE Milk MWW \$API \$TI  
 12 -.4 95 152 .36 8 22 69 154 95  
 Adj. WW: 739 lbs.



**H1017**

CCR Cowboy Cut 5048Z x Ellingson Ms. Banger B449  
 CE BW WW YW ADG MCE Milk MWW \$API \$TI  
 11 1.8 90 133 .27 6 24 69 135 82  
 Adj. WW: 740 lbs.



**H40**

Ellingson Ultimate F830 x Ellingson Ms. Beef W972  
 CE BW WW YW ADG MCE Milk MWW \$API \$TI  
 7 3.9 100 159 .37 2 29 79 114 81  
 Adj. WW: 782 lbs.

For catalogs and information:



**Terry Ellingson & Family**

Phone: 701-384-6225

Cell: 701-741-3045

5065 125th Ave. NE • Dahlen, ND 58224

email: tellings@polarcomm.com

**Guest Consignor:**

Strommen Simmentals, Arthur, ND • 701-430-0669

The catalog and updated information  
 (homozygous polled test, ultrasound  
 and scrotal measurements)  
 will be available online.

**DVAuction**

# Looking for Performance?

## Ellingson Simmental Performance Bull & Female Sale

**Friday, January 22, 2021 • 1:00 pm CST**

Sale Location: At the farm, Dahlen, ND

**21st Anniversary**

**Selling:**

**75 Yearling Simmental and SimAngus™ Bulls**

**30 Open Yearling Heifers**

**Other sires include:** Hooks Eagle 6E, CLRS Dividend 405D, CDI Perspective 238A, Connealy Blackhawk 6198, Deer Valley Growth Fund, TJ Roosevelt 366E, CNS Dream On L186, TNT Bootlegger Z268, CCR Cowboy Cut 5048Z, Wheatland Bull 680S, GLS Integrate Z3 and G A R Prophet.

**Bulls will be SEMEN TESTED and GUARANTEED BREEDERS.**



**H48**

WFL Westcott 24C x Ellingson Walbangr C5027  
 CE BW WW YW ADG MCE Milk MWW \$API \$TI  
 4 6.1 100 155 .34 -.3 29 79 94 77  
 Adj. WW: 859 lbs.



**H82**

Harvie Red Summit 54B x Ellingson Ms. Proof E7052  
 CE BW WW YW ADG MCE Milk MWW \$API \$TI  
 7 4.4 98 153 .34 5 30 79 111 82  
 Adj. WW: 792 lbs.



**H1003**

Deer Valley Growth Fund x Ellingson Ms. Stubby C556  
 CE BW WW YW ADG MCE Milk MWW \$API \$TI  
 9 4.2 105 169 .40 6 22 74 123 90  
 Adj. WW: 822 lbs.



**H1009**

Rust Rio Grande 7022 ET x Ellingson CPTMorgn C5026  
 CE BW WW YW ADG MCE Milk MWW \$API \$TI  
 5 5.5 99 157 .37 -.6 22 71 108 81  
 Adj. WW: 813 lbs.

**www.ellingsonsimmentals.com or www.simmental.org**

EPDs pulled 12.11.20





*Tim Clark, Turtle Lake, ND*



*Brandon Callis, Minco, OK*



*Chad Cook, Walsh, CO*

## CLARK ELECTED TO AMERICAN SIMMENTAL BOARD OF TRUSTEES

Six newcomers have won election to the ASA Board of Trustees: Brandon Callis, Minco, Oklahoma; Tim Clark, Turtle Lake, North Dakota; Chad Cook, Walsh, Colorado; Victor Guerra, Linn, Texas; Chris Ivie, Summertown, Tennessee; and Doug Parke, Paris, Kentucky.

All six individuals will be sworn in during ASA's online Annual Meeting, January 29, 2020.

### **Tim Clark, Turtle Lake, ND**

Tim Clark and his wife, Tam, own and operate Double T Simmentals. Clark became an ASA member in 1978 and has been involved with the

breed for 42 years. His experience with the breed began when he used Simmental bulls on Hereford cows, and their program has evolved from there. Today, Double T maintains a herd of 200 SimGenetics females. Bulls and some females are marketed through an annual sale, offering both black and red Simmental genetics. Most of their bulls go into local herds, and the Clarks focus on making certain a balanced variety of genetics are available to fit each commercial producer's needs. Clark has served the North Dakota Simmental Association in a wide variety of capacities over the years, including as president, as a board member, on

the sales committee, as an advisor for the junior program, and is involved in a number of local agricultural organizations. Off the farm, he works for Hubbard Feeds/Alltech as a regional sales manager.

### **Brandon Callis, Minco, OK**

Brandon Callis, with his wife, Kelly, and their children, owns and operates BKC Livestock, a small herd of SimGenetics cows. Callis markets a handful of bulls to area commercial customers while focusing on raising cattle that their children and other

...Continued on page 10



*Doug Parke, Paris, KY*



*Victor Guerra, Linn, TX*



*Chris Ivie, Summertown, TN*



# POWER & GROWTH

## Calving Ease

Maternal & Carcass Traits



672H

Full Brother to Last Year's High Seller! 5 Full Brothers Sell!  
Admiral X Final Answer • 1/2 SM

CE	WW	YW	MCE	MM	API	TI
9	86	129	7	20	141	85



157H

Imperial X Shear Force • PB SM • Homo Polled

CE	WW	YW	MCE	MM	API	TI
19	59	86	11	11	166	80



612H

TT Elite X Red Iron • 3/4 SM • Homo Polled

CE	WW	YW	MCE	MM	API	TI
10	76	112	7	28	138	76

Selling  
**45**

Red & Black Simmental &  
SimInfluenced Yearling Bulls

20 Open Females &  
**THE ELITE EIGHT**

4 Elite Breds • 4 Elite Opens



7032

Iconic X Main Event • 1/2 SM  
Homo Polled • Homo Black

CE	WW	YW	MCE	MM	API	TI
13	101	155	6	24	156	100

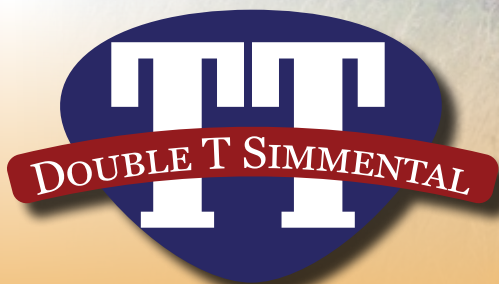
EPD's as of 12/7/2020



688H

Proclamation X Eight Ball • PB SM  
Homo Polled • Homo Black

CE	WW	YW	MCE	MM	API	TI
12	92	136	8	33	146	92



Tim & Tam Clark • Ranch: (701) 448-2815  
Tim Cell: (701) 799-7752 • Tam Cell: (701) 315-0032

[www.DoubleTSimmentals.com](http://www.DoubleTSimmentals.com)

Stop by anytime to see the cattle! ~ Turtle Lake, ND



juniors can exhibit across the nation. Cattle are sold by private-treaty and a recently added online marketing forum. Callis has been involved with a number of AJSA Classics and a variety of other youth events. He is a member of the Oklahoma Cattlemen's Association. Callis graduated from Texas A&M in 2005 and was a member of their 2004 National Champion Livestock Judging Team. He went on to attain his Masters in animal breeding and genetics from Kansas State. Callis has judged cattle in 30 states, Canada, and the International Simmental Show in Sao Paulo, Brazil. He has mentored and taught more than 150 students as a professor and livestock judging coach over the past 15 years.

### **Chad Cook, Walsh, CO**

Chad Cook owns and operates Bridle Bit Simmentals alongside his family. At the age of 10, Cook purchased his first Simmental heifer at the National Western Stock Show and has been involved with the breed ever since. He graduated from Aims Community College with a degree in production agriculture, and subsequently returned to the family ranch. The Cook family, member number 4086, has been in the business for generations, and currently markets around 90 Simmental and SimAngus black and red bulls each year at their All-Terrain Bull Sale in March. Data collection is at the core of the Bridle Bit business, and the operation has received perfect Performance Advocate scores on several occasions. Cook was involved with the AJSA growing up, has served on the Colorado Simmental Association Board of Directors for nine years, and has served as an advisor for Colorado junior activities.

### **Victor Guerra, Linn, TX**

In conjunction with his parents and siblings, Victor Guerra owns and operates La Muneca Cattle Company. They run 100 Simmental and Simbrah cows, and market genetics in their LMC GenePlus Online Sale through Cattle in Motion, and several other sales. Support of youth is important to the Guerra family, annually sponsoring the Simmental-Simbrah Superbowl which



*Front row: Gary Updyke, JW Brune (Treasurer), Cliff Orley, Gordon Hodges, Tim Curran (Chairman), Randy Moody (Vice-Chair), Kent Brunner, and Tom Hook. Back row: Wade Shafer (EVP), Mike Forman, Steve Eichacker, Barry Wesner, Greg Walthall, Tom Nelson, Fred Schuetze, John Griswold, Jim Ligon, and Clay Lassle.*

they co-founded, and conducting their own Field Day and Futurity for 32 years. They also hold an annual online sale around Thanksgiving where all proceeds go to various worthy causes, including breed youth events. He is a strong advocate of Simmental and Simbrah genetics, participating in numerous activities including annual performance bull gain tests in Texas. He currently serves the Hidalgo County Farm Bureau as chairman of the scholarship committee. Guerra also serves the Texas FFA Foundation Board of Directors and the Lone Star National Bank Advisory Board. Yearly, the Guerra family hosts a community fundraiser, where 600 people attend to raise money for the community. Guerra holds a J.D. from Saint Mary's School of law.

### **Chris Ivie, Summertown, TN**

With his wife, Tammy, and family, Chris Ivie, owns and operates Ivie and Sons Simmentals. Ivie has been involved with Simmental for more than 30 years, running 70 head of SimGenetics females, while marketing 15 bulls annually to area commercial producers. Ivie and Sons also produce hay for feed and market. In addition to private-treaty sales, genetics are marketed through national and regional events and sales, and the Ivie family exhibits cattle across the country. Ivie has served as a board member of the Tennessee Simmental Association twice over the past 20 years including a year as president when the TSA hosted the 2016 AJSA Eastern Regional Classic. He is an active

member of the Tennessee Cattlemen's Association, his county association, and is a certified Tennessee Master Beef Producer. Ivie volunteers throughout his community in a number of ways. In addition to his cattle, Ivie is the owner of Ivie Automotive Consulting, an engineering consulting company.

### **Doug Parke, Paris, KY**

Doug Parke has been involved with the Simmental breed for 40 years. With his wife, Debbie, they own and operate DP Sales and Management, Parke Livestock Enterprises, and DP Online Sales, and have been involved with hundreds of SimGenetics sales. Parke was involved with the Tennessee Simmental Association, serving as a board member and president, before moving home, where he has served on the Kentucky Simmental Association board. He has served the Simmental Breeders Sweepstakes as a board member, attended Fall Focus events, ASA Annual Meetings, and numerous AJSA National and Regional Classics. With their daughter, Holli, the Parkes have raised SimGenetics animals and marketed progeny through various sales. Parke has owned percentages in sires like Dream On, In Dew Time, and Duracell. Parke is also active in the Kentucky Cattlemen's Association, Farm Bureau, and volunteers for and sponsors 4-H, FFA, and his community. In 2020 Doug was awarded entry into the Golden Book of the World Simmental Fleckvieh Federation.





**ES** Eichacker  
Simmentals

# Annual Production Sale 2021

Friday, March 5th at 1:00 PM  
Join us at the Farm, Salem, SD



*ES Right Time*

Owned with CK Cattle Co.

Sons sell in our 2021 sale offering  
Limited opportunities  
to purchase semen!

*ES A110*

Donor Dam to ES Right Time

Several sons selling in our 2021 sale

**100 BULLS &  
50 FEMALES**

**SIMMENTAL & SIMANGUS™, SIM/RED ANGUS,  
ANGUS & RED ANGUS**

This sale will be  
broadcast live  
on the internet! **DVAuction**  
Broadcasting Real-Time Auctions

Guest Breeder: JK Angus 605-940-5104



Sale Managers: Eberspacher Enterprises 507-532-6694  
Val Cell 612-805-7405 • sales@ebersale.com  
Catalog will be online at [www.ebersale.com](http://www.ebersale.com)

**ES** Eichacker  
Simmentals

Steve & Cathy Eichacker  
Home 605-425-2391 • Cell 605-421-1152  
Salem, SD



# SD SIMMENTAL ASSOCIATION HOSTS ANNUAL MEETING, BANQUET, SALE



*The South Dakota Simmental Association Board of Directors, Left to right: Kevin Blagg, Colton Buss, Bridgett Twedt, Harley Cable, Brett Tostenson, Clay Duxbury, Mark Thyen and Chris Effling.*

*Below: Outgoing president Clay Duxbury served as the Master of Ceremonies for the banquet held on Friday, December 18 at the Ramada in Mitchell, SD.*



*SD Simmental Association members with Minnesota addresses had a full table.*



*A great crowd was on hand for the banquet.*





# ANNUAL PRODUCTION SALE Wednesday, Feb. 10, 2021

1 p.m. • At the Ranch • Douglas, N.D.

Join us for lunch at 11 a.m.

*selling* **50+** Bulls Black & Red,  
Simmental & SimAngus™



H133 • Reg#: 3829891 • PB SM  
MAINLINE X BLACK ADVANCE (YO22 DONOR)



H52 • Reg#: 3829853 • 1/2 SM  
FRANCHISE X FINAL ANSWER



H90 • Reg#: 3829870 • 5/8 SM  
EAGLE X DIPLOMAT (F18 DONOR)



H31 • Reg#: 3829843 • 5/8 SM  
MAIN EVENT X ELEVATE



H38 • Reg#: 3829846 • 3/4 SM  
REDWOOD X STEPPING STONE



H72 • Reg#: 3829864 • PB SM  
ANTIDOTE X POWERLINE



H34 • Reg#: 3829844 • 5/8 SM  
FREIGHTLINER X RESOURCE



H39 • Reg#: 3829847 • 5/8 SM  
FREIGHTLINER X RESOURCE (A61 DONOR)



H95 • Reg#: 3829874 • PB SM  
20/20 X BROADWAY



The *Sys* Family

Call, email, text or check our website for more information or to request a catalog!

Gary Sys: (701) 509-1154 • Derek Sys: (701) 509-5870  
E-mail: [dj.sys@hotmail.com](mailto:dj.sys@hotmail.com) • [www.SysSimmentals.com](http://www.SysSimmentals.com)

Watch for our female consignments in the Northwest Select Simmental Sale!

This sale will be broadcast live on the internet.

**DVAuction**  
Broadcasting Real-Time Auctions  
Real time bidding & proxy bidding available.



# SD SIMMENTAL ASSOCIATION HOSTS ANNUAL MEETING, BANQUET, SALE, CONT'D



*Above: The 2020 Breeder of the Year Award was presented to TSN Simmentals. Pictured left to right are SDSA Vice-President Bridget Twedt, Rebecca Christman, Tim and Sandy Naaz, and Shad Christman.*



*Left: The \$500 Heifer Grants were awarded to these juniors in attendance at the banquet. The grant is available to use towards a purchase of an open or bred heifer from the State Source Sale, Sioux Empire Farm Show Sale, Black Hills Stock Show Sale and the Watertown Farm Show Sale. Pictured left to right are Mark Cavanee, Harper Duxbury, Hudson Fouberg, Ramsey Fouberg, Jade Twedt, Cassandra Twedt.*



*The Promoter of the Year Award was presented to Amber and Kevin Blagg for their hard work and dedication to the breed and especially to the SD Junior Simmental Association. Amber and Kevin were surrounded by the juniors who attended the banquet.*



# BREEDING FOR THE FUTURE

23RD ANNUAL PRODUCTION SALE

WEDNESDAY FEBRUARY 10TH, 2021 - 1PM

SALE LOCATION >>> CB SALE FACILITY 4 miles south of our ranch on 76th Ave, SE.

Stay updated on sale pictures, videos and other information by visiting our website!

[WWW.WILKINSONFARMSSIMMENTALS.COM](http://WWW.WILKINSONFARMSSIMMENTALS.COM)

Follow us on Facebook & Instagram- Wilkinson Farms Simmentals

## SELLING

65 Red & Black Simmental Bulls

• 10 Bred Heifers • Pick of 2020 Born Heifers



**WS MISS SUGAR C4**

WS Miss Sugar was selected the last time we sold Pick of our Replacement Heifers.



**API: 151 TI: 102 // ASA #: 3764913**

WS 4H :: WS Proclamation E202 x TJ Main Event  
EPDs: CE: 12 BW: 2.2 WW: 106 YW: 159 MCE: 7 Milk: 31.9  
MWW: 85 CW: 61.8 YG: -.36 Marb: .41 BF: -.07 REA: 1.23



**API: 147 TI: 93 // ASA #: 3764803**

WS 12H :: WS Proclamation E202 X TJ Main Event  
EPDs: CE: 12 BW: -.07 WW: 94 YW: 136 MCE: 6 Milk: 33  
MWW: 80 CW: 49.3 YG: -.32 Marb: .39 BF: -.06 REA: 1.02



**API: 153 TI: 97 // ASA #: 3764703**

WS 67H :: WS Proclamation E202 x W/C Executive Order  
EPDs: CE: 14 BW: -.05 WW: 91 YW: 140 MCE: 9 Milk: 31  
MWW: 76 CW: 50.2 YG: -.37 Marb: .42 BF: -.08 REA: 1.05



**API: 173 TI: 98 // ASA #: 3764897**

WS 7H :: TRPH RRR Nightforce X CCR Abilene  
EPDs: CE: 13 BW: -.01 WW: 81 YW: 119 MCE: 7 Milk: 25  
MWW: 66 CW: 33.3 YG: -.036 Marb: .77 BF: -.06 REA: 1.08



**API: 161 TI: 98 // ASA #: 3764912**

WS 8H :: Hook's Empire x CCR Abilene  
EPDs: CE: 10 BW: 2.6 WW: 92 YW: 142 MCE: 6 Milk: 27  
MWW: 73 CW: 50.3 YG: -.36 Marb: .62 BF: -.07 REA: 1.10



**API: 168 TI: 94 // ASA #: 3764845**

WS 79H :: Hook's Empire X CDI Verdict  
EPDs: CE: 13 BW: -.02 WW: 81 YW: 125 MCE: 7 Milk: 26  
MWW: 67 CW: 36.3 YG: -.36 Marb: .57 BF: -.06 REA: .97



**API: 169 TI: 90 // ASA #: 3764935**

WS 100H :: KRJ HZN Direct Impact x CDI Verdict  
CE: 19 BW: -3.1 WW: 74 YW: 109 MCE: 11 Milk: 30  
MWW: 67 CW: 33.2 YG: -.42 Marb: .41 BF: -.07 REA: 1.09



**API: 134 TI: 91 // ASA #: 3588009**

WS G92 :: WS All Aboard 880 X KBHR Ultimate  
EPDs: CE: 10 BW: 2.7 WW: 93 YW: 145 MCE: 5 Milk: 24  
MWW: 70 CW: 38.5 YG: -.56 Marb: .30 BF: -.12 REA: 1.23

**BRED TO HOOK'S GIBALTAR!**



**Wilkinson Farms Simmentals**

Terry & Cathy Schlenker Family • Montpelier, ND 58472

Aaron: 701-269-8271 • Terry: 701-320-2171

Jared: 701-659-0318 • Jordan: 701-320-1895

**ALLIED**  
GENETIC RESOURCES

Marty Ropp - 406-581-7835

[www.alliedgeneticresources.com](http://www.alliedgeneticresources.com)

This sale will be broadcast live on the internet.  
**DVAuction**  
Broadcasting Real-Time Auctions  
Real time bidding & proxy bidding available.  
For questions contact Julie (JULIE) 304-902-1000



## Effling, Blagg named SD Simmental Assoc. Scholarship Recipients



The South Dakota Simmental Association Board of Directors awarded two \$500 scholarships in 2020. This year's recipients were from left to right, Chesney Effling, Highmore and Abby Blagg, Salem.



**HEALY  
SIMMENTAL**

## ANNUAL BULL SALE

February 5, 2021 - 11:00 am CST

STOCKMEN'S LIVESTOCK MARKET - YANKTON, SD

*[Selling 47 Bulls]*

BID ONLINE WITH DV AUCTION



9286  
3/4 SM

WS JACKSON X YARDLEY UTAH



9158  
PB SM

W/C MIDLAND X KGH HIGH NOON



9157  
3/4 SM

W/C MIDLAND X YARDLEY UTAH



9203  
PB SM

BCLR CASH FLOW X CNS DREAM ON

HEALY SIMMENTAL 29621 441 AVE - IRENE SD 57037  
KEVIN HEALY 605-660-3880 - SIMON HEALY 605-661-3588  
WWW.HEALYSIMMENTAL.COM





# KLINE

**SIMMENTAL RANCH**  
Hurdsville, North Dakota

**9<sup>th</sup> Annual Production Sale**  
**FEB. 7, 2021**

**AT THE RANCH • HURDSFIELD, ND**

*Selling:* 50 Simmental and SimAngus™ Bulls  
8 Coming 2-Year-Old Bulls  
20 Registered Bred Heifers  
20 Registered Open Heifers  
& 39 commercial bred heifers



**H31**

MRL RED WHISKEY 101B x HOOK'S YUKON 80Y  
ASA#: 3813803 • BD: 2/29/2020 • PB SM



**H22**

WLB BLOOD RUNNER 461F x RENDEZVOUS LOCOMOTIVE 80B  
ASA#: 3813828 • BD: 2/27/2020 • 3/4 SM 1/4 CS



**H20**

TJ TEARDROP 783F x TNT TUITION U238  
ASA#: 3813825 • BD: 2/26/2020 • 3/4 SM 1/4 AN



**H40**

TJ TEARDROP 783F x TNT TOP CUT P274  
ASA#: 3813821 • BD: 3/2/2020 • PB SM



**H98**

DCR MR MAIN ATTRACTION E18 x HARVIE  
JDFWALLBANGER111X  
ASA#: 3813832 • BD: 3/20/2020 • PB SM



**H101**

IPU ROYAL FLUSH 4C x KBHR POWERSHIFT T150  
ASA#: 3813809 • BD: 3/21/2020 • PB SM



**H46**

MRL RED WHISKEY 101B x OLF RED PATRIARCH W124  
ASA#: 3813812 • BD: 3/6/2020 • PB SM



**H56**

LFE THE RIDDLER 323B x BAS HEAVY DUTY  
ASA#: 3813796 • BD: 3/8/2020 • PB SM



**H44**

WLB BLOOD RUNNER 3011C 461F x IPU ROYAL FLUSH 4C  
ASA#: 3813838 • BD: 3/5/2020 • 3/4 SM 1/4 CS

**FEEDER CALF MARKETING ASSISTANCE • REPLACEMENT HEIFER CALF BUY BACK**  
*Our customers' success is our success!*

Visit us online or on Facebook to request a catalog or  
for videos, DNA and other updates prior to sale day.

**www.KLSRCOWS.com**  
f/Kline Simmental Ranch

Visitors welcome anytime!

**Monty & Terri • Matt, Eddy, Emersyn & Landri Kline**  
Matt: (701) 693-6317 • Monty: (701) 693-6806  
E-mail: klsrcows@gmail.com

**DVAuction**





Pictured from left to right, Chisum Peterson, auctioneer and Mike Traxinger conduct the prime pages auction at the SD Simmental Association Annual Meeting. Mike is the bookkeeper for the magazine and we thank him for his dedication to making the magazine a success.

# PRIME PAGES AUCTION SETS RECORD

At the SD Simmental Association Annual Meeting and Banquet the prime pages of the SD Simmenteller and ND Simmental Scene were auctioned off.

Proceeds from the auction go to help support the magazine as well as junior member scholarships.

Chisum Peterson was the auctioneer and Cattle Business Weekly field representatives, Jim Scheel and Tony Heins were the ringmen. This year the auction set a record pace. The buyers were as follows:

## January Issue, 2021-2022

- The front inside cover sold to Hartman Cattle Co. for \$2,300.
- The inside back cover sold to Kenner Simmental for \$1,900.
- The back cover sold to CK Cattle Co. for \$2,300.

## February Issue, 2021-2022

- The inside front cover sold to Windy Creek Cattle Co for \$2,600.
- The inside back cover sold to Eichacker Simmental for \$1,100.
- The back cover sold to 3C/NLC Simmental for \$2,300.

## November Issue, 2021-2022

- The inside front cover sold to Martin-Trudeau Insurance for \$1,500.
- The inside back cover sold to Martin-Trudeau Insurance for \$1,500.
- The back cover sold to Martin-Trudeau Insurance for \$1,500.

Thanks to everyone who helped make this auction the best one yet.

There is a  
**DIFFERENCE!**



WIX G320  
ASA # 3806192 • Hook's Eagle x Upgrade



WIX G315  
ASA # 3806190 • Hook's Eagle x Upgrade



WIX H30  
Cadillac X Beau Jangles

Wicks Cattle Sale: Monday

**FEB. 1, 2021**

AT THE WIX BARN & LODGE  
RICHARDTON, N.D., 2 P.M. MT

**80 SIMANGUS™ &  
ANGUS BULLS**

65 YEARLINGS & 15 LONG-AGE BULLS

**40 OPEN YEARLING  
HEIFERS**

**WICKS  
CATTLE**

**Zane, Mary Jo, Josie & Mya Wicks**  
Richardton, N.D. • 701-290-3938

Videos available at [www.wickscattle.com](http://www.wickscattle.com)

Like us on Facebook!



# TSN Simmentals

## Annual Bull Sale

\*\*EPD's as of 12/17/2020\*\*

February 23rd, 2021  
Platte Livestock Market  
Platte, SD  
Selling 60 Registered<sup>TM</sup>  
Simmental and SimAngus  
Bulls

Tim Naasz- (605)207-0229

Home- (605)337-3503

27005 360th Ave

Platte, SD 57369

<https://www.tsnsimmentals.com/>  
[tsnsimm@midstatesd.net](mailto:tsnsimm@midstatesd.net)



### TSN EAGLE H571

Hook's Eagle x TSN Miss Ranch Hand

3/4 SM 1/4 AN

API: 152 TI: 87

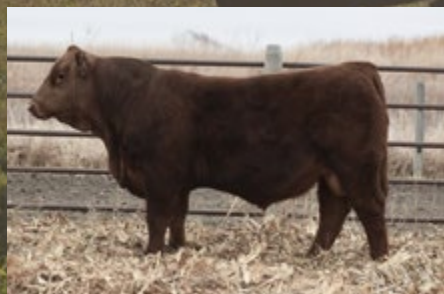


### TSN FRONTLINE H568

Hook's Frontline x TSN Miss Prophet

3/4 SM 1/4 AN

API: 150 TI: 93



### TSN RED MOON H802

WS Red Moon x TSN Miss Pilgrim

PB SM

API: 131 TI: 90



### TSN Franchise H733

T J Franchise x TSN Miss Frontier

1/2 SM 1/2 AN

API: 140 TI: 90



### TSN EAGLE H823

Hook's Eagle x TSN Miss Sure Fire

5/8 SM 3/8 AN

API: 169 TI: 98



### TSN EAGLE H837

Hook's Eagle x TSN Miss Frontier

3/4 SM 1/4 AN

API: 147 TI: 93



### TSN BIG TIMBER H818

Koch Big Timber x TSN Miss Sure Fire

3/4 SM 1/4 AN

API: 140 TI: 92



### TSN BEACON H854

Hook's Beacon x TSN Miss Frontier

3/4 SM 1/4 AN

API: 151 TI: 89



# ND *Simmental* CLASSIC SALE



**Thank you, Wilkinson Farms of Montpelier, N.D., for donating this elite open heifer!**



*Triple H Simmentals won the donation heifer. Pictured left to right, Brayden Hanson, friend Hope and Jared Schlenker of Wilkinson Farms.*

## ND SIMMENTAL ASSOC. PRESENTS AWARDS TO RETIRING DIRECTORS



*Newly elected President Bryan Leapoldt, left, presents David Doll an appreciation plaque for years of service on the ND Simmental Association Board.*



*Past president David Doll, left, presented a gift of appreciation to Tim Clark for his time on the North Dakota Simmental Board of Directors.*



*Right: Past president David Doll, left, awarded outgoing board member Dusty Kunkel for his time on the ND Simmental Association Board.*



# STACK THE DECK



*in your favor*

with maternal cows that produce performance  
bulls and generate extra pounds come sale day!



Where the COW  
makes the difference!

Kevin Hansen Family  
(701) 720-6551

Wade Staigle Family  
(701) 226-6464

[www.dakotaxpress.com](http://www.dakotaxpress.com)



*Join us for our  
Annual Sale*

**FEB. 19 2021**

Kist Livestock,  
Mandan, ND • 1 p.m.

**140 Bulls**  
Simmental • SimAngus™  
**50 Bred Heifers**



# ND SIMMENTAL CLASSIC SALE HIGHLIGHTS



*Erika Kenner, Kenner Simmentals, purchased the top-selling bred heifer at the North Dakota Simmental Classic Sale.*



*ND Simmental Association Board of Directors. From left to right. First row. Kim Myers, Doug Bichler, Bryan Leapoldt; Second row: Davis Kinn, JR Aufforth, Kelly Hanson, Lyndon Hoiby; Back row: Wyatt Hansen, Jason Quandt, Pat Thorson*



*A large crowd on-hand for the ND Simmental Classic Sale, Dec. 12, 2020, in Mandan, ND*



# Rooted in Heritage, Growing through Innovation, Delivering Profitability

With over 50 years of experience raising Simmental genetics, we have pinpointed the traits that increase our customers' profit margin.

The balance of hybrid vigor, calving ease, fleshing ability and fertility compliment and enhance any cowherd to delivery calves that excel through all stages of production.



Join us ...

*Annual Production Sale*

**Tuesday, February 23, 2021**

Bulls viewable at the ranch

Sale: 2 p.m. CST · Pifer's Auction, Steele, ND

40 Sim-Red Angus Bulls  
25 Sim-Red Angus Bred Heifers



**DVAuction** Broadcasting Real-time Auctions



**DECKERT**  
SIM-RED ANGUS

Justin & Carrie Deckert  
24952 392nd St NE  
Arena, ND 58494  
(701) 943-2477  
dsrccows@bektel.com



# ASA'S SIMSPECIALISTS ARE HERE TO HELP YOU

*By Lilly Platts, Editor, Register / SimTalk  
Reprinted with permission*

A team of highly-respected, knowledgeable beef industry professionals and producers are available to represent our Simmental breed and advance the relationship between seedstock and commercial producers.

ASA is fortunate to have a team of beef industry professionals, with a wide variety of experience, available to represent the Simmental breed. The SimSpecialist team covers the US attending sales, presenting at educational events, and serving as a resource for seedstock and commercial breeders alike. Luke Bowman, Member Events and International Operations Director, coordinates the SimSpecialists team. For Bowman, the experience represented by the team is invaluable, and the model is industry-leading.

"I would say the most obvious strength that our team has is 'wisdom,'" Bowman shares. "Many of the SimSpecialists have storied histories

working around the country in all aspects of the beef industry — we have nutritionists, reproductive physiologists, all the way to meat scientists on the team. Many are professional educators and are well-known throughout their state and region for being the experts in beef cattle production; however, the team's expertise doesn't come with just the extension specialists. We have folks that ranch full time and can understand the day-in and day-outs of our membership and the challenges they face."

The SimSpecialist program model is unique compared to others in the industry. Bowman explains, "Our model is special and innovative. Rather than recruiting young, fresh-out-of-college kids ready to hit the road shaking hands and learning the ways of the seedstock and commercial industries, we have folks that are literally celebrities in the beef cattle business. These men and women are well known and well

respected in their given territories already."

Bowman emphasizes that the SimSpecialist model parallels the mission of the Association. "Advocacy is paramount in this model. These men and women are contractors and aren't salaried to preach "Breed 'em all Simmental" as part of the job description. That makes this program excellent. The fact of the matter is that the science, knowledge, and economics of beef cattle breeding and production all follow what we do at the ASA. Basically, just speaking facts about topics such as heterosis, economically-important traits, a breed that can do it all, etc., all follow the story of the modern American Simmental or SimGenetics animal. These experts are so well versed in the application of science and animal biotechnology that talking about what we do at the ASA is

...Continued on page 26





# THYEN *Simmentals*

## First Annual Production Sale

February 20, 2021 @ 1:00

with fellow consignor:

## **SOLSAA ANGUS**



Solsaa Angus Sires:  
Musgrave Stunner 316  
LD Capitalist 316  
SAV President 6847  
Koupals B&B Ft Knox 4122



Thyen Simmentals Sires:

Lock n Load  
Harvie Wallbanger  
True Justice  
Dream On  
TL Hi Lite  
TSA Mr Uprising  
Built Right

CONTACT US  
FOR A CATALOG  
MIKE THYEN: 605-520-0575  
ERIC SOLSAA: 605-237-0984

45142 183rd Street - Hayti, South Dakota  
3.5 miles West of Kones Korner



just the easiest thing for them to do!”

The SimSpecialist team consists of highly qualified and respected beef industry professionals and producers. ASA took a minute to speak with four of our SimSpecialists, two who are new to the team, and two who are long-time veterans.

### **Gary Burns**

Gary Burns recently joined the SimSpecialists team, and is looking forward to building relationships within the breed, and especially with commercial producers. Burns managed a commercial herd, and later a purebred Simmental operation before being hired by Clemson University to serve as the Beef Cattle Research Station Manager. At Clemson, he became involved with the Simmental breed, and recalls, “Over time it became apparent that Simmental was a fit for what I was interested in.

---

**“Our SimSpecialists are a wealth of knowledge, especially with the Learning Library. They know the programs and can explain them to our customers.” - Erika Kenner**

---

That led me to become a strong believer in Simmental.”

Burns has had a wide range of experience and plans to bring his passion for the industry and breed into his role as a SimSpecialist. “It was just a natural fit for me to become involved. It gives me an opportunity to reach out to Simmental breeders and commercial producers, and really talk about the strong aspects of the breed. I’m really looking forward to going to some bull sales and field days, and to get the word out about what SimSpecialists can do and what their goals are,” Burns explained. “I’ve always felt that ASA has been very progressive toward their purebred breeders, and their membership, and supplied resources through EPDs, and they put a lot of effort and emphasis on the importance

of the tools that we have today for selection.”

Making connections with commercial breeders is something Burns is especially looking forward to. “I think the real opportunity for the SimSpecialists is to not only take that and get more purebred breeders involved with the programs that ASA has to offer but also those are extending out to the commercial breeders. I think it’s a wonderful opportunity for commercial breeders to look at their herd and use selection tools they haven’t had access to in the past. Burns also points to the varied experience of the SimSpecialists team as a strength. “When you look through the SimSpecialists, they are all people with a broad background. Many

...Continued on page 28





Our Long-Term Commitment To

# Powerful Genetics

starts with productive dams like these!



**H149** Sells Feb. 5!

DKSR GALAXY B108 x IPU RED ZONE 82Y  
Homo Polled • ASA# 3804887 • Adj. WW 822



**H133** Sells Feb. 5!

DKSR GALAXY B108 x WS ALL IN W111  
Homo Polled • ASA# 3804984 • Adj. WW 770



**H112** Sells Feb. 5!

IPU RED ZONE 82Y x HXC CONQUEST 4405P  
Homo Polled • ASA# 3805006 • Adj. WW 759



**H236** Sells Feb. 5!

BBS BATMAN F4 X IPU GLADIATOR 151C  
Homo Black • ASA# 3805017 • Adj. WW 844

**H129** Sells Feb. 5!

IPU DILLY DILLY 7F x BGL ROOSTER D181B  
Homo Polled • ASA# 3804915 • Adj. WW 840



Call to be added to our mailing list and to request a catalog!

Dusty & Kayla Kunkel, New Salem, ND  
(701) 471-5342 • (701) 843-7006  
[www.kunkelsimmentals.com](http://www.kunkelsimmentals.com)

E-mail: [kdkunkel@westriv.com](mailto:kdkunkel@westriv.com) • Visitors always welcome!

**DVAuction**

**ALLIED**

*Kunkel Simmentals*  
**DKSR**

Annual Production Sale

**Feb. 5, 2021**

At the Ranch • New Salem, ND • 1 P.M. CST

**60 BULLS • 46 BRED HEIFERS**



have a background in education, and they are used to presenting information. Most are representatives in areas that they live, that they know. They have a lot of contacts in the area they are serving as SimSpecialists, and to me, I feel like I have a feel for where I should go to present what ASA has to offer, especially for commercial breeders.”

### Russ Danielson

Russ Danielson is a veteran of the SimSpecialist program. Danielson was a member of the animal science faculty at North Dakota State for 44 years. At NDSU, Danielson taught animal science courses, livestock evaluation, beef production, and beef systems. He managed the University beef unit, and was a part of the development of the purebred Simmental herd in 1978. He



Russ Danielson, SimSpecialist for ND, SD, and MN

100 Spring Charolais Bulls  
60 Spring Simmental Bulls

5 Open Charolais Heifers  
5 Open Simmental Heifers

**DOLL RANCH**  
Charolais & Simmental

**41<sup>st</sup> Annual Production Sale**  
Tuesday, March 2, 2021  
1:30PM CST KIST LIVESTOCK MANDAN, ND



**DCR MR HAWKINS H37 (3780881)**  
2/6/20 BW 84 ADJWWT/R 901/109  
Sire: Hook's Black Hawk 50B  
Dam: DCR Ms Beacon F1  
BW -0.3 WW 97.2 YW 145.2 MLK 26.4  
MWW 75 API 164.7 TI 99.79



**DCR MR HARD IMPACT H69 (3780825)**  
2/10/20 BW 80 ADJWWT/R 867/105  
Sire: KRJ HZN Direct Impact F805  
Dam: DCR Ms B Wideload F536  
BW 0.5 WW 86.4 YW 130.7 MLK 28.0  
MWW 71.1 API 140.4 TI 84.8



**DCR MR HEAVY POWER H236 (M945164)**  
3/3/20 BW 95 ADJWWT/R 923/114  
Sire: WCF Mr Silver Gun 467  
Dam: DCR Ms Tuffie C456  
BW 2.1 WW 55 YW 96 MLK 9 MTL 37  
TSI 235.58 (TOP 2%)



**DCR MR HUCKLEBERRY H410 (3780973)**  
3/14/20 BW 100 ADJWWT/R 873/105  
Sire: RFS Bulletproof B42  
Dam: DCR Ms Redgie C428  
BW 4.5 WW 90.2 YW 141.1 MLK 37.4  
MWW 82.4 API 128 TI 79.7

***Doll Ranch Charolais & Simmental***  
New Salem, North Dakota

Charles & Pamela Doll  
701-843-8673  
dollboyz@westriv.com

Harlan & Jodie Doll  
701-843-8771

David & Donna Doll  
701-843-7947  
dollfarm@westriv.com

DVAuction

saw the early development of the breed, and through his students and personal interest, has remained involved.

He became a SimSpecialist six years ago through his connections with other Simmental advocates like Bill Zimmerman, Bert Moore, and current EVP, Wade Shafer. He agreed to become a representative for the breed for a number of reasons. “One was the fact that the Simmental Association, for all of the time that I have been involved, has been at the cutting edge in terms of programs, and the use of technology, and working to improve the lot of the cattle producer.” He also highly values the collaborative nature of the Association. “The Simmental Association has provided leadership in the collaboration of various breeds, through International Genetic Solutions and those programs. The mission is more than promoting the Simmental breed — it’s to enhance the profitability of the beef industry. If you go to sales and visit with people, they are more willing to use SimGenetics in conjunction with their programs, take advantage of heterosis, and the good programs they have to help commercial producers.”

Danielson has carried out a variety of tasks as a SimSpecialist, including being present at sales, educating potential customers, and helping seedstock and commercial producers acquire bulls. On average, he will attend between a

...Continued on page 28



# PUTTIN' BEEF WHERE IT COUNTS, IN YOUR POCKET BOOK!

EKSTRUM SIMMENTALS  
Annual Bull Sale | February 13, 2021 | Kimball, SD



Sunny Valley Thunder 56G  
Our New Herd Sire!



MRL Capone130B



LFE The Riddler 323B

RAISING OUTCROSS PERFORMANCE SIMMENTAL GENETICS FOR OVER 50 YEARS!



EKSTRUM SIMMENTALS & SIMGENETICS

Clay Ekstrum: (H) 605-778-6185 / (C) 605-730-1511 | John Ekstrum: 605-778-6414

36220 257th St. Kimball, SD 57355 | Email: clayekstrum@midstatesd.net

Find us on Facebook: Ekstrum Simmentals

**WWW.EKSTRUMSIMMENTALS.COM**

South Dakota's source for outcross performance Simmentals specializing in red breeding stock

Videos online & live sale broadcast at [www.dvauction.com](http://www.dvauction.com)





dozen sales in the area between January and March. Being of service to each breeder and the Association is a top priority for Danielson, "I always try to make it a point to get there around three hours early, because that gives me the opportunity to talk to the owners and managers before they get busy, as well as the auctioneers and ring staff, and any buyers who may need help. It's been a great experience, and it's a benefit to the Association to have a field staff that is familiar with the local areas they represent, and have a working relationship with producers in that area, and across the country."

### **Susan Russell**

Susan Russell has been a lifelong member of the Simmental community, and as a SimSpecialist, she is able to put her extensive knowledge of the Association and breed, to great use. Russell grew up in the beef industry, and her family's operation, Reflected R Ranch, joined ASA in 1993. They participate in the Carcass Merit Program, Cow Herd DNA Roundup, and Calf Crop Genomics. The Russells also utilize DNA testing and are focused on selling high-indexing, balanced,

performance-oriented SimGenetics bulls that will improve their customers' herds.

Russell has a wealth of experience organizing events, including the National Western Stock Show breed events, and has served as the Colorado Simmental Association Secretary/Treasurer since 1998. She served a Western Region Trustee from 2010 to 2016 and was a member of the Executive Committee. Her husband, Curt, also served six years on the Board, and their sons were both extremely involved in the AJSA. The Russells have been Golden Book Award recipients.

Russell uses her years of experience and intricate knowledge of the Association in her role as a SimSpecialist. "ASA is unique in its focus on downstream success. With its mission of making our member's customers more profitable, I think that goal will keep the breed in the forefront of the beef industry," Russell explains. "I interact with cattlemen at shows, auctions, and other livestock events. I especially enjoy taking photos and talking to ranchers. Good weather, good cattle, and good people are a dream "office" for a SimSpecialist. When visiting in the sale pens, over a piece of pie or in the stands, I am promoting our breed and that breeder's operation. I have been fortunate to be



*Dan Wiedenbach, SimSpecialist for SD*

a SimSpecialist where the breeders are diligent in providing accurate data and tools to help the potential buyer evaluate their cattle. With the world's largest database, we can help show how matings with SimGenetics will aid operations of any size and niche market."

### **Dr. Jack Whitter**

Dr. Jack Whittier, Scottsbluff, Nebraska, is ASA's most recent

...Continued on page 32





# Benda Ranch

## ANNUAL PRODUCTION SALE

Monday, February 8, 2021 • 1 p.m. • Kimball Livestock Exchange, Kimball, SD



**JBS Mr. Main Event 733H • ASA# 3792399**  
TJ Main Event x JBS Big Casino  
3/4 SM • Adj. WW: 717 • Ratio: 107



**JBS Mr. Nightride 824H • ASA# 3792373**  
J Bar J Nightride x WCS El Dorado  
3/4 SM • Adj. WW: 813 • Ratio: 121

**BULLS HAD NO CREEP FEED! • FREE WINTERING UNTIL APRIL 15TH & SEMEN TESTED.**



**JBS Mr. Renown 652H • ASA# 3792496**  
SAV Renown x JBS Mr. Tanker  
1/2 SM • Adj. WW: 742 • Ratio: 111



**JBS Mr. Crimson 532H • ASA# 3792491**  
JBS Mr. Crimson Tide x SAV Bismarck  
1/2 SM • Adj. WW: 751 • Ratio: 112



**JBS Mr. Cash Flow 503H • ASA# 3792481**  
BCLR Cash Flow x Welsh Dew It Right  
PB SM • Adj. WW: 745 • Ratio: 111



**JBS Mr. Colorado 816H • ASA# 3792528**  
Colorado Bridle Bit x TKCC Carver  
PB SM • Adj. WW: 821 • Ratio: 123



**JBS Mr. Night Watch 812H • ASA# 3792405**  
W/C Night Watch x RBS Boise  
PB SM • Adj. WW: 734 • Ratio: 110



**JBS Mr. Main Event 313H • ASA# 3792360**  
TJ Main Event x HC Power Drive  
3/4 SM • Adj. WW: 747 • Ratio: ET

**BENDA RANCH SIMMENTALS • 26106 366th Ave • Kimball, SD 57355**  
**Home:** 605-778-6703 • **Jim:** 605-730-6703 • **Jay:** 605-730-0215  
**Email:** bendaranch@midstatesd.net

www.**BendaRanch**.com  
Join us for our Video Sale! Watch and bid online.

**DVAuction**  
Broadcasting Real Time Auctions



**"It's nice to have someone at our sale who can answer questions, and spend more one-on-one time with people who may be new to Simmental. It really is a great program." - Erika Kenner**

SIMSPECIALISTS, continued from page 30

addition to the SimSpecialist team. Dr. Whittier spent his career in academia, first working at the University of Missouri, then in the animal sciences department at Colorado State University, and most recently, as the Director of the Panhandle Research and Extension Center for the University of Nebraska. After retiring in August, Dr. Whittier stepped up to represent the Simmental breed. Over his career, he was focused on a variety of subjects, including nutrition and reproduction management. He was an important part of the development and naming of the CO-Synch protocol that is now commonly used for time-breeding in Artificial Insemination.

Dr. Whittier's history with the

Simmental breed goes back many years, and while in Colorado, he and his wife, Robynn, purchased a group of SimAngus™ heifers, eventually selling bulls in conjunction with Altenburg Super Baldy Ranch. Today in Nebraska, they continue to raise SimAngus bulls and replacement females. Dr. Whittier became interested in the SimSpecialist program because of the connections he had made within the breed over the years, and because he believes in the vision the current Association was built upon. "I've always been impressed with the breed," he explains. "I was impressed with the forethought to focus on performance and balanced traits."

Continuing to build relationships in the industry while also having the opportunity to help spread the word about ASA programs are also some of the reasons Dr. Whittier became a



*Perry Thomas, SimSpecialist for ND*

SimSpecialist. As a scientist himself, the heavy-emphasis on using the available knowledge and tools to advance the breed makes sense to Dr. Whittier, and he has also been able to interact with ASA staff, like Dr. Jackie Atkins and past EVP, Jerry Lipsey, over the years.

...Continued on page 36



*Annual Production Sale!*  
**Feb. 9, 2021**  
 1 p.m. • Kist Livestock, Mandan, ND

*Selling* **85** Simmental & SimAngus™ Herd Bulls

**65** Beautiful Bred Heifers  
*\* Including all of Roger & Susan Finke's Black Bred Heifers!*

*Contact Us for Info!*

**KAELBERER RANCH**  
 Claye & Michelle Kaelberer Family  
 701-220-3124 • New Salem, ND

**SRF SIMMENTALS**  
 Todd & Kelly Finke Family  
 701-240-7711 • Berthold, ND

**KINN SIMMENTALS**  
 Tyler & Tiffany Kinn Family • 701-220-5276  
 Davis & Amber Kinn Family • 701-400-5108  
 Turtle Lake, ND

[www.CattleSalePage.com/EdgeoftheWest](http://www.CattleSalePage.com/EdgeoftheWest)



60 Fall born 18 month old, 30 purebred Simmental, 120 SimAngus™ and 20 Angus Bulls, all are black and polled, most are homozygous

Offering the pick of all our 2020 spring and fall open heifers, over 200 head to pick from.

Simmental Angus

# BEGGER'S

## Begger's

### DIAMOND V RANCH

BIG SKY GENETIC SOURCE BULL SALE

Wednesday, February 3, 2021 • 12:30 PM – At the Ranch – Wibaux, MT



Selling 160 Black Simmental, SimAngus™ and Angus



#### COW POWER AT ITS FINEST:

The basis of any good breeding program is the mother cow. Our motto is: **"THE RANCHER COMES FIRST"**. Every breeding decision we make is to improve our customer's bottom line. BEGGER'S DIAMOND V RANCH provides the perfect blend of COW SENSE, COMMON SENSE and SCIENCE. We know the value of a good mother cow, she must be fertile, efficient and problem-free. She must have the staying power to produce a valuable calf year-after-year on her own, with no extra assistance in the environment mother nature provides. She must possess a low-maintenance, easy-fleshing body type that requires little or no extra input. She has to have a problem-free udder and have a good gentle attitude with a set of feet and legs that will serve her until she exits your program at a ripe old age.

- ❖ We are your source for homozygous black and polled Simmental, SimAngus™, Angus genetics, the top 160 bulls out of 275 sell.
- ❖ Many ½ & ¾ brothers sell in volume enabling you to assemble like bred genetics that are predictable and consistent.
- ❖ From a program that does the day-to-day work. We calve, feed, and work around our cattle every day, so we know our cows if they become problematic. They won't see next year and their only way out is through a packing plant.
- ❖ We are straight shooters, we don't hem and haw or beat around the bush. We honestly try to answer and meet our customer's questions, needs and concerns. Our bulls come with a complete 100% satisfaction warranty. If there is a problem we will make it right.
- ❖ We provide free bull keep until April, along with a free breeding soundness exam and free delivery, in most cases nationwide on purchases over \$5,000.
- ❖ Every bull walks through the sale ring enabling you to see what you are buying. Some pictures and videos just don't represent cattle as they should.
- ❖ We do not creep feed our bulls, they are what their mothers and grass can produce, raised in big contemporary groups.

There is a lot of hype out there about EPDs, Genomic Testing, and Carcass Traits. We strongly believe in the use of all of these genetic enhancement tools. We also know that you can ruin a good cowherd in a blink of an eye if you chase paper traits with no directive or focus put on the mother cow and what it takes to keep her in production with as few inputs as possible. There are breeding programs that only provide EPDs with no actual data. Be careful, many times these programs have cattle that do not have the ability to produce pay weight, and fleshing ability. They don't like to show actual data because it isn't all that good. Raw data such as actual birth weights, 205 wts, 365 wts and performance data and indexes allows you to observe how an animal has performed within his contemporary group. It shows you his potential to sire calves that may increase or decrease performance. There are way too many cattle out there with excellent EPD's and dollar indexes that are not worthy of anything but a castrating knife. You can breed for all the highest EPDs and indexes in the world, but if you sacrifice FLESHING ABILITY, MENTAL, MATERNAL, and PHYSICAL TRAITS, along with an animal's ability to produce PAY WEIGHT and EYE APPEAL, all you will gain is a cull cow with good EPDs.



Look for us on Facebook



Bill Begger: 406-796-2326 / John Begger: 406-795-9914  
darbegger@gmail.com / 482 Custer Trail Road / Wibaux, MT 59353

[beggersdiamondvranch.com](http://beggersdiamondvranch.com)



# **S/M FLECKVIEH CATTLE**

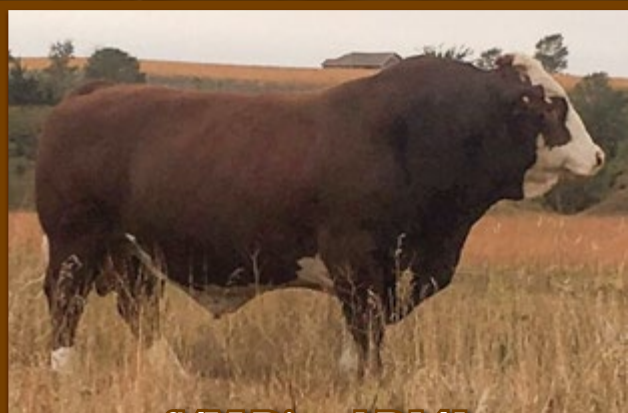
**JEFF SORENSON**

Garretson, South Dakota

sorenson@augie.edu | 605-359-8728

[www.smfleckvieh.com](http://www.smfleckvieh.com)

## **Sires of our 2021 Sale Bulls**



**S/M Diesel D141**



**Sibelle Arthur 39B**



**Sanmar Polled Pharaoh 12P**



**PHS Bank Roll 345B**

**YEARLING BULLS FOR SALE BY PRIVATE TREATY**

**PLEASE SEE OUR WEBSITE FOR MORE INFORMATION**

**[www.smfleckvieh.com](http://www.smfleckvieh.com)**



DOUBLE J FARMS 47TH ANNUAL

# Production Sale

**FRIDAY, JANUARY 29, 2021**

**12:00PM • AT THE FARM NEAR GARRETSON**

**DVAuction**  
Broadcasting Real-Time Auctions

**ALL BULLS HOMOZYGOUS POLLED + COAT COLOR TESTED**



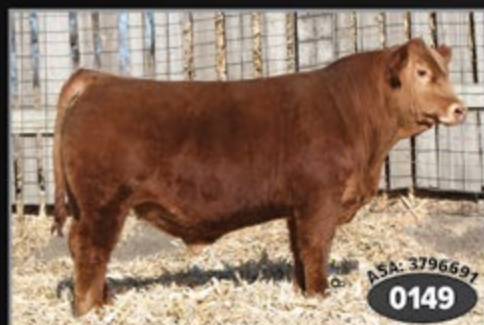
**PB || COLORADO x ELDORADO**  
MANY CALVING EASE BULLS THAT ADD POUNDS!



**PB || INNOVATOR x UPRISING**  
MATERNAL BROTHER TO LAST YEAR'S HIGH SELLER!



**PB || RIGHT TIME x UPGRADE**  
NEW OUTCROSS, CURVE BENDING GENETICS!



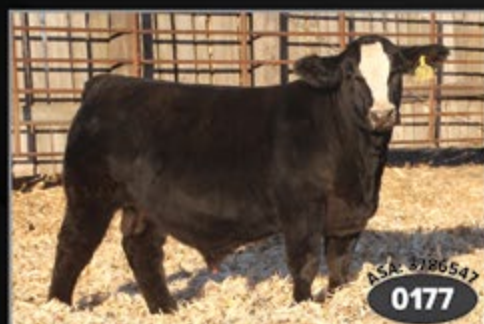
**3/4 || BANKROLL x TEBOW**  
OUTSTANDING NON-DILUTOR RED BULLS SELL!



**PB || INNOVATOR x DREAM ON**  
CONSISTENT DONOR WITH 6 ET  
HIGH GROWTH + POWER SONS SELLING!



**1/2 || ENHANCE x DREAM ON**  
23 PERCENTAGE BULLS WITH CE, MATERNAL & ADDED  
PERFORMANCE.



**PB || MR CCF 20-20 x DREAM ON**  
BALDIES - 12 MATERNAL SIBS SELL!



**PB || TRUE JUSTICE x RED JEWEL**  
2 DIRECT DAUGHTERS OF DECEASED RED JEWEL SELL!  
BRED TO LOVER BOY.



**PB || TURN PIKE x DREAM ON**  
BRED TO GOLD. HEART OF HERD!

**Double J  
Farms**



MAILING ADDRESS 48672 252ND STREET • GARRETSON, SD

KIPP 605-351-9088 • EMAIL [DOUBLEJFARMS@ALLIANCECOM.NET](mailto:DOUBLEJFARMS@ALLIANCECOM.NET) • [WWW.DOUBLEJSIMMENTALS.COM](http://WWW.DOUBLEJSIMMENTALS.COM)

**OFFERING** SIMMENTAL • SIMANGUS™ • ANGUS  
60 BULLS • 10 BRED HEIFERS • EMBRYOS • "PICK OF THE HERD" FLUSH

*Request a catalog.*  
CONTACT US TODAY!



"I enjoy cattle and the people who go with those cattle," Dr. Whitter says. "I enjoy looking at good cattle, and I've always enjoyed sales."

Erika Kenner, Kenner Simmentals, Leads North Dakota, has utilized the SimSpecialist program in a number of ways. "Our SimSpecialists are a wealth of knowledge, especially with the Learning Library. They know the programs and can explain them to our customers," Kenner says. "It's nice to have someone at our sale who can answer questions, and spend more one-on-one time with people who may be new to Simmental. It really is a great program."



## ***Incorporating a SimSpecialist in your sale or event is easy***

There are a number of options for individuals and state associations to utilize SimSpecialists:

- The member must have spent \$2,000 or more with ASA Publication within the last fiscal year.
- The member must have spent \$3,500 or more with the Association within the last fiscal year.
- There must be an audience of at least 25 cattlemen and the SimSpecialist gets at least 30 minutes of speaking time to discuss ASA programs.
- The member whose event doesn't qualify with the aforementioned can pay the ASA \$500 for a "Buy a Day" with a SimSpecialist.
- The member must host a State Association event; each state gets 2 free days per year, at least one day must be commercially focused.

Following is a full listing of available SimSpecialists, and the general areas they cover. For more information on scheduling, please contact [asapromotion@simmgene.com](mailto:asapromotion@simmgene.com).

- **Bert Moore** - IA (Indianola, IA)
- **Michael Dikeman** - KS & MO (Manhattan, KS)
- **Russ Danielson** - ND, SD, MN (Fargo, ND)
- **Perry Thomas** - ND (Bismarck, ND)
- **Daniel Weidenbach** - SD (Highmore, SD)
- **Ben Spitzer** - South Central US (Fort Worth, TX)
- **Brian DeFreese** - North Eastern US (West Lafayette, IN)
- **Gary Burns** - South Eastern US (Pendleton, SC)
- **Susan Russell** - CO & NE (Sugar City, CO)
- **Jack Whittier** - NE (Scottsbluff, NE)
- **John Paterson** - North Western US (Bozeman, MT)
- **Chris Davis** - KY & TN (Horse Cave, KY)
- **Bill Zimmerman** - MN (St. Cloud, MN)



# Hoiby Simmental Bilnanza

Northwest  
North Dakota's  
Source for  
Simmental &  
SimAngus™ Genetics!

Saturday,  
**February 20, 2021**

1 p.m. CST • McGregor, North Dakota  
At the ranch in the heated sale barn.  
Please join us for a pre-sale lunch!

*Selling:*

**40** Black & Red Bulls  
**10** Black & Red Bred Heifers  
**10** Black & Red Open Heifers  
*Simmental & SimAngus™*



**H49**

MRL Viper X TJ Sharper Image  
Purebred

CE	BW	WW	YW	MCE	MILK	MWW
8.4	2.5	78.0	117.0	7.2	24.5	63.0



**H116**

Leachman Cadillac X Trademark  
3/4 Simmental - 1/4 Red Angus

CE	BW	WW	YW	MCE	MILK	MWW
11.0	1.6	77.0	114.0	4.3	26.0	64.0



**H68**

WS Proclamation X TJ Makers Mark  
Purebred

CE	BW	WW	YW	MCE	MILK	MWW
13.4	0.0	86.0	127.0	8.0	22.4	65.0



**H37**

PF Sling Shot X SS Gold Mine  
1/2 Simmental - 1/2 Angus

CE	BW	WW	YW	MCE	MILK	MWW
9.2	1.5	79.0	119.0	4.6	20.0	60.0



**H63**

MRL Viper X KNH Force  
Purebred

CE	BW	WW	YW	MCE	MILK	MWW
8.0	3.0	84.0	122.0	7.5	31.0	73.0



**H81**

SDS Graduate X PF Vern  
5/8 Simmental - 3/8 Angus

CE	BW	WW	YW	MCE	MILK	MWW
13.4-1.0		70.0	108.0	8.0	25.0	60.0

## HOIBY SIMMENTAL RANCH

Lyndon, Shelley, Paige & Levi Hoiby  
7890 191st Ave NW • McGregor, ND 58755  
Home: 701-546-4043 • Cell: 701-641-1083



Email: hoibysim@nccray.com  
Website: hoibysimmentalranch.com



# STAND STRONG SIMMENTAL

## LOCAL SIMMENTAL PRODUCERS FEATURED IN NATIONAL VIDEO SERIES

The American Simmental Association has introduced a new video series, titled “Stand Strong. Simmental.” They will share a video feature every Sunday evening, exploring how Simmental and SimGenetics help families raise profitable herds that stand the test of time.

Some ranches from the region have already been featured.

Bichler Simmentals, C Diamond Ranch, Stavick Simmental, Wilkinson Farms Simmentals and Oak Meadow Farms have been featured.

You can view these from the homepage on [www.simmental.org](http://www.simmental.org) or on [www.youtube.com](http://www.youtube.com) by subscribing to the American Simmental Association channel.





# TNT SIMMENTALS

36th Annual "CARRYING ON"  
The Explosive Difference Sale  
Friday, **FEBRUARY 12, 2021**  
1 p.m. CST • ONLINE ONLY on DVAuction with Seth Weishaar, auctioneer

Your **COMMERCIAL BULL HEADQUARTERS**, along with **BREED-LEADING HERDSIRES!**  
They are **THICK** and **DEEP** – All backed by the **TNT 100% GUARANTEE!**

*Featuring sons of these sires, along with other elite AI and herd bulls:*



TNT IGNITE D370



TNT BCR UNIFIED B203



TNT UNION D385



GIBBS 7382E BROAD RANGE



ASR BIRTHRIGHT F834



IR IMPERIAL D948

**DVAuction** Broadcasting  
Real-time Auctions

*Selling Approximately*  
**105 Bulls**

Purebred Black Sim  
3/4, 1/2 & 1/4 SimAngus™

Purebred Red Sim  
3/4, 1/2 & 1/4 SimAngus™

Purebred Red Angus

- Volume discounts!
- Performance Data and Genomic-Enhanced EPDs!
- No creep feed!
- Majority homozygous polled!
- All reds are non-diluters!
- All blacks will be homozygous- or heterozygous-black verified!

*All of the bulls can be  
viewed anytime at the ranch,  
5 miles South of Almont.*

## TNT SIMMENTAL RANCH

Kevin & Lynette Thompson  
5125 53rd St • Almont, ND 58520-9731  
(701) 843-8454 (Home)  
(701) 391-1631 (Kevin's cell)  
kevinandlynette@westriv.com

Shanon & Gabe Erbele  
6471 51st Ave SE • Lehr, ND 58460  
(701) 527-5885 (Shanon's cell)  
(701) 426-9445 (Gabe's cell)  
gserbele@hotmail.com

View videos online.  
Contact us for a catalog.



TNT  
SIMMENTAL  
RANCH

[www.tntsimmentals.com](http://www.tntsimmentals.com)



# MORE MEANS MORE

 **SimGenetics**  
PROFIT THROUGH SCIENCE  
*American Simmental Association*



More carcass weight, live weight, muscle, marbling and profit.

**Simmental** genetics offer all this and more of the traits your herd needs to stay profitable.

Backed by the most comprehensive beef cattle genetic database, the **American Simmental Association** offers commercial producers more selection and marketing tools than any other breed association.

All to strengthen your bottom line.

## STAND STRONG SIMMENTAL

406-587-4531 • [simmental.org](http://simmental.org)



# RENDEZVOUS FARMS

## 17<sup>th</sup> Annual "Holiday-Monday" Bull & Female Sale

**Monday, February 15, 2021 • 1 PM Sharp**  
**Rendezvous Farms • Ste. Rose, MB**  
— only 3 hours from Bottineau, ND

*190 head selling. Internet Bidding available with DLMS.ca*  
*\*New for 2021\* Sale will be held on the farm,*  
*Ste. Rose, MB in our heated shop.*

**Huge thanks to new & repeat American customers  
who purchased 20 head in our sale last year!**

Jason & Jenny Zahn, ND - Randy & Stacey Schmitt, ND  
James Rognlien, ND - Seth Zink, ND - Austin Manning, ND  
Robert Rath, ND - Shelby Schmidt, ND - David & Dawsen Bueligen, ND  
Matt Abraham, SD - Stacy Frericks, SD - Nick Stormo, SD  
Jacob Bach, SD - Robert Ellingson, SD



65 Red Polled Bulls sell. Solid Reds & Blazes.



40 Black Polled Bulls Sell! Solid Blacks & Blazes.



30 Fullblood Bulls Sell.



55 Top Cut Open Heifers Sell!



David Maguet 204 447-7573 Ste. Rose du Lac, MB • rendezvousfarms@hotmail.com



Gerald Maguet 204 447-5037

DOWNLOAD THE CATALOGUE AT [WWW.TRANSCONLIVESTOCK.COM](http://WWW.TRANSCONLIVESTOCK.COM)

professionally managed by  
**TRANSCON**  
Livestock Corp.  
Jay Good (483) 556-5563 Darren Paget (403) 323-3995  
Glenn Norton (780) 542-0634 Cody Honey (403) 559-8809



# PRODUCER PROFILE: DOLL RANCH, NEW SALEM, ND

*By Tamra Heins, Editor*

The Doll Ranch is located in west central North Dakota. About 20 minutes west of the Bismarck-Mandan area, most might think this west river location as being cattle country. And while Morton County, where the Doll family calls home, claims to be the largest cattle county in the state, it is also an area that has productive farmland. The Doll family operates a very diversified farm and ranch with registered Simmental and Charolais cattle. They have hosted 40 annual bull sales and are busy planning their 41st sale which is scheduled for March 2.

The farm raises cash crops as well as feedstuffs that they process to be utilized by the cows and calves wintered at the Doll Ranch. They raise corn, wheat, barley and several other cash crops on the land that has been in their family for years.

Dave is the youngest of nine children. He literally has uncle's that are younger than he is. The Doll Ranch is certainly the definition of a family farm. Dave's brothers, Charlie and Harlan are all partners in the Doll Ranch. Charlie's sons, Joey and Ty are also working at the ranch as well. While there is always plenty for everyone to do it is also sometimes challenging to work with family. Dave laughs and

---

**"I think that Simmentals are in a good place right now." - David Doll**

---

...Continued on page 44





PERFORMANCE + PEACE OF MIND = GENETICS WITH VISION

H45 - PB - ASA# 3782005



ADJ WW: 864

LCDR Impact x Remington Lock N Load  
Homo Black, Homo Polled | Yearling  
9.1 4.9 112 173 5 24 80 API 128 TI 93  
*Flushmate Brothers Sell!*

H48 - PB - ASA# 3782008



ADJ WW: 831

LCDR Impact x CLRS Constitution  
Homo Black, Homo Polled | Yearling  
10.2 2.2 96 153 6 23 71 API 156 TI 97  
*Flushmate Brothers Sell!*

H7 - PB - ASA# 3781967



ADJ WW: 851

LCDR Impact x WS All-Around  
Hetero Black, Homo Polled | Yearling  
11.8 -0.6 87 128 7 29 73 API 142 TI 91  
*Flushmate Brothers Sell!*

H44 - PB - ASA# 3782004



ADJ WW: 815

LCDR Impact x CLRS Constitution  
Homo Black, Homo Polled | Yearling  
12.1 2.4 97 150 7 23 71 API 151 TI 95  
*Flushmate Brothers Sell!*

H88 - 3/4 - ASA# 3782049



ADJ WW: 934

LCDR Impact x TNT Tanker  
Homo Black, Homo Polled | Yearling  
6.6 4.9 107 162 5 30 84 API 127 TI 90

H81 - 3/4 - ASA# 3782042



LCDR Impact x G A R Predestined  
Black, Homo Polled | Open Heifer  
10.3 2.1 89 142 5 28 72 API 140 TI 91

FEATURING. LCDR IMPACT 134F | PB SM | ASA# 3491039  
CDI MAINLINE 265D x WS MISS SUGAR C4  
SELLING THE FIRST CALVES BY THIS EXCITING SIRE!



25+ SONS WILL SELL!

# IMPACT

## YOUR BOTTOM LINE.

RYDEEN FARMS' 23<sup>rd</sup> ANNUAL GENETICS WITH VISION SALE  
SATURDAY, FEBRUARY 13, 2021 2:00 PM CST / CLEARBROOK, MN

SIMMENTAL & SIMANGUS BULLS & FEMALES

68 Black & Red Yearling Bulls / 12 Aged Bulls [18 months] / 30 Bred & 10 Open Females

VISIT OUR WEBSITE TO JOIN OUR MAILING LIST TODAY

47499 199th Ave, Clearbrook, MN 56634 | rydeen@gvtel.com  
Farm: 218-776-3338 | Paul: 218-280-1916 | Rydeen Farms

**Rydeen Farms**  
SINCE 1897

Polled Red & Black Simmental Cattle



BID ONLINE! DVAuction

**WWW.RYDEENFARMS.COM**





*Outgoing ND Simmental Board of Directors President Dave Doll and family. Pictured from left to right are Katie, Donna, Dave, Krysten and Jake.*



DOLL RANCH, continued from page 42

says, "You learn to pick your battles and sometimes you just walk away." But they make it work.

Like many in Morton county, they once milked cows and actually started their Charolais and Simmental herds by utilizing their Holstein and commercial Hereford cows. Charolais were first introduced at the Doll's by their Dad, Joe in 1959. Dave's mom, Helen was actually quite instrumental in bringing the Simmental breed to the Doll Ranch. She attended an informational meeting in Bismarck where she learned about the benefits of the breed and brought that knowledge home. The Doll's began their Simmental herd shortly after that in 1969.

Dave recently served as the president of the ND Simmental Association. He served on the board from 2015-2020.

Dave is quick to point out that his brothers and nephews all have important roles in the operation. "When there are big decisions to be made, we all get together to make them," said Dave. I know many decisions are made at their shop.

Dave is married to Donna and they have two daughters, Katie and Krysten. They hosted a wedding this summer as daughter Krysten married Jake Faehnrich in August.

Dave is optimistic about the popularity of the Simmental breed and is looking forward to good sales. "I think that Simmentals are in a good place right now."



**Tom & Meghan Schnabel • 605-380-2811**  
**www.srsimms.com • schnabelranch@gmail.com**

**Annual Sale Third Saturday in February**  
 Hub City Livestock. Aberdeen, SD



# Traxinger

simmental

*Annual Production Sale*

**FEBRUARY 10, 2021**

1 p.m. • At the Ranch • Houghton, SD

**50** Red & Black  
Simmental &  
SimAngus™ Bulls

*Selling sons from these select sires and others:*



IPU 2Y DILLINGER 80B



SAS ANTIDOTE F046



TRAX'S RED RIVER  
\$29,000 bull sold to Stangland Simmental  
SEMEN AVAILABLE!

*Semen & Progeny for Sale!*



COLORADO BRIDLE BIT • ASA#: 3271382

Contact Traxinger Simmental or  
Thomas Livestock (406) 581-8859

*Semen for Sale!*



BRIDLE BIT RED ROCK • ASA#: 3560970

Contact Traxinger Simmental or  
Thomas Livestock (406) 581-8859

Traxinger  
simmental



MIKE & TERRI TRAXINGER • 605-294-7227

MICHAEL TRAXINGER • 605-377-4110

E-mail: [mtrax@nvc.net](mailto:mtrax@nvc.net)

[www.TraxingerSimmental.com](http://www.TraxingerSimmental.com)



# SALE REPORTS

## SOUTH DAKOTA SIMMENTAL SOURCE SALE

December 19, 2020  
Ramada Hotel • Mitchell, SD

Sale Management ...DP Sales Management  
Auctioneer .....Chisum Peterson  
Sale Staff ..... Jeff Kapperman, Jim Scheel  
Kelly Schmidt  
DVAuction .....Justin Dikoff

**62 LOTS AVG: \$3,420**

**Lot 9 ..... \$12,900**  
**ES Right Time FA110-4, Semen**  
Sire: Welshs Dew it Right  
Consignor ..... CK Cattle Company  
15 units sold to various buyers avg. \$860

**Lot 6 ..... \$10,050**  
**Double J Miss T739, Embryos**  
24 embryos sired by 8 different bulls  
avg: \$418  
Consignor ..... Double J Farms  
Buyers: Beitelspacher Ranches, SD  
Cody Baloun, SD; Clay Ekstrum, SD  
Craig Pollington, MI; P/T Livestock, WY

**Lot 5 ..... \$8,550**  
**EKHCC Red Jewel, Embryos**  
12 embryos sired by 4 bulls avg: \$712  
Consignor: Kevin Van Beek  
Buyers: Cashley Ahlberg, NE  
Hillcrest Farm, MA  
Garrett Parsons, KS  
P/T Livestock, WY

**Lot 45 ..... \$6,500**  
**BSK Vidalia, Bred Female**  
Sire: W/C Relentless  
Bred to: BSK Steel Reserve (sexed  
heifer)  
Consignor: Kasper Farm  
Buyer: Clay Van Aernam, IA

**Lot 34 ..... \$6,000**  
**Miss DUXS Hope 050H, Open Fe-  
male**  
Sire: DUXS Brits Empire 7#  
Consignor: Jackpot Cattle Company  
Buyer: Kaitlin & Tucker Michael, SD

**Lot 49 ..... \$6,000**  
**2E Giggles 91G, Bred Female**  
Sire: CDI Mainline 265D  
Bred to: KBHR Sniper  
Consignor: Double E Cattle Co.  
Buyer: ClearWater Simmentals, IN

**Lot 10 ..... \$5700**  
**ES A100, Embryos**  
Sires: TJ Gold & LDCR Progressive  
Consignor: Eichacker Simmentals  
Buyers: Cable C-Cross Ranch, SD  
Jeff Stagmeyer, NE

**Lot 3A ..... \$5,500**  
**ES A85, Pregnancy**  
Sire: SFG Cowboy Logic  
Consignor: Hilltop & HTP Simmentals  
Buyer: Traxinger Simmentals, SD

**Lot 33 ..... \$5,250**  
**Miss DUXS Hazel 053H, Open Fe-  
male**  
Sire: Mr. CCF 20-20  
Consignor: Jackpot Cattle Company  
Buyer: Double E Cattle Co., MN

**Lot 55 ..... \$5,000**  
**RJ Bankroll 80H, Steer**  
Sire: W/C Bankroll 811D  
Consignor: RJ Cattle  
Buyer: Nelson England, IL

**Lot 2 ..... \$5,000**  
**Pick of the Bred Females**  
Consignor: R&R Cattle Co.  
Buyer: Benda Simmental, SD

**Lot 47 ..... \$4,750**  
**OMF Gerrie G54, Bred Female**  
Sire: WS All-Around Z35  
Bred to: GAR Ashland  
Consignor: Oak Meadow Farm  
Simmental  
Buyer: ClearWater Simmentals, IN

**Lot 50 ..... \$4,000**  
**BRKC Georgia G72, Bred Female**  
Sire: W/C Night Watch  
Bred to: SAV Final Answer  
Consignor: Rocky Knoll Cattle  
Buyer: Dakota Acres, SD

**Lot 54 ..... \$4,000**  
**2E Gwendolyn 8G, Bred Female**  
Sire: Hook's Encore  
Bred to: Hook's Eagle  
Consignor: Double E Cattle Co.  
Buyer: Ed Fishbach, SD

**Lot 16B ..... \$3,750**  
**BSKF Black Beauty, Open Female**  
Sire: W/C Bankroll 811D  
Consignor: Kasper Farms  
Buyer: Pleasant Hill Farms, KY

**Lot 16A ..... \$3,750**  
**BSKF Red Velvet, Open Female**  
Sire: W/C Bankroll 811D  
Consignor: Kasper Farms  
Buyer: Pleasant Hill Farms, KY



BEGIN YOUR **BULL** SELECTION WITH VISUAL APPRAISAL.  
*The bullpen is open!*

# BULL SALE

SIMMENTAL SIMANGUS



## MARCH 15, 2021

*Live Online™*



**DMCC**  [WWW.DIAMONDMCATTLE.COM](http://WWW.DIAMONDMCATTLE.COM) 

MARK MUELLER 785 547 6054 • MATT MUELLER 785 547 5505  
HIAWATHA, KANSAS

CHOOSE GENETICS THAT LEAVE YOU WITH  
**FEMALES** THAT KEEP YOU IN BUSINESS.



# SALE REPORTS

## ND SIMMENTAL CLASSIC

December 12, 2020  
Kist Livestock • Mandan, ND

Sale Manager..... Thomas Livestock Services  
Auctioneer..... Tracy Harl  
Sales Staff Kirby Goetsch, Scott Ressler,  
Perry Thomas, Todd Finke

**1 PICK OF HERD BRED HEIFERS**  
**\$10,000**

**2 ET LOTS AVERAGE \$625**

**36 BRED HEIFERS AVERAGE \$4,735**

**14 HEIFER CALVES AVERAGE \$2,536**

BRED HEIFERS:

**Lot 25.....\$11,000**

**SRF Miss 940G**

Born: March 10, 2019

Sire: CCR Cowboy Cut 5048Z

Bred to: Hook's Black Hawk 50B

Consignor: SRF Simmental, Berthold, ND

Buyer: Kenner Simmental, Leeds, ND

**Lot 19.....\$9,500**

**MLC MS X-T Redzone G198**

Born: April 5, 2019

Sire: X-T Red Zone 55E

Bred to: Leachman Cadillac L025A,

Consignor: Mandan Lake Simmental  
Ranch, Center, ND

Buyer: Darrell Kemnitz, Cavalier, ND

**Lot 18.....\$8,500**

**MLC MS Redzone G111**

Born: March 27, 2019

Sire: IPU Red Zone 82Y

Bred to: CDI Perception 254E

Consignor: Mandan Lake Simmental  
Ranch, Center, ND

Buyer: Darrell Kemnitz, Cavalier, ND

PICK OF BRED HEIFERS:

**Lot 1.....\$10,000**

**Pick of Kenner's Bred Heifers**

Consignor: Kenner Simmental Ranch,  
Leeds, ND

Buyer: Ben Stroth, Tappen, ND

TOP SELLING HEIFER CALF:

**Lot 44.....\$3,750**

**TT Honey 020H**

Born: February 13, 2020

Sire: IR Imperial D948

Consignor: Double T Simmentals, Turtle  
Lake, ND

Buyer: Ben Stroth, Tappen, ND

## Winging deals at the Classic



Second grader Bridger Martin of Turtle Lake, N.D., (left) bid on and purchased his first Simmental heifer at the North Dakota Simmental Classic Sale, Dec. 12, 2020, at Kist Livestock in Mandan, N.D. Immediately afterward, he sought out and negotiated a plan with fellow Simmental breeder (and his classmate's dad), Tyler Kinn also of Turtle Lake, N.D., on hauling the heifer home for him.

## Hit us with your best shot!



Would you like to see your Simmental cattle on the pages of the SD SimmenTeller/ND Simmental Scene? Send your favorite scenic photos! We are always looking for the next best cover shot or photos to use along with a feature story!



# BATA BROTHERS & BELL SIMMENTAL'S

## Performance Simmental Bull and Female Sale

FEBRUARY 12TH, 2021 @ 1:00PM CST

Sale Location: Rugby Livestock Auction, Hwy 2 Rugby, ND



**Selling:** 70 Purebred Simmental Yearling Bulls  
~ 12 - 2yr. old Simmental / SimAngus Bulls ~ 11 Bred Heifers



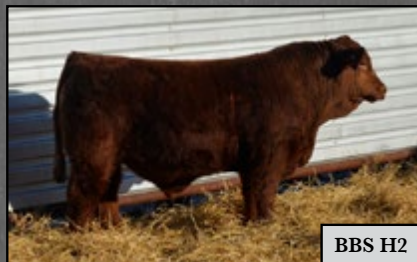
**BBS H95**

3.8 5.3 92.7 137.8 0.28 4.4 25.5 71.8  
SPRINGCREEK GRAND SLAM X MLC MR. JUSTICE  
PB - HOMO POLLED, HOMO BLACK - BW 96 ADJ. WW 869



**BELL H73**

6.3 4.1 85.2 127.8 0.27 4.4 25.4 68  
HART OF WAR X BELL MISS SPRINGCREEK  
ASA # (3809061) BW 103 ADJ. WW 818



**BBS H2**

4.0 4.8 91.7 145 0.33 3.4 21 67  
BBS LOAD'M UP D202 X LFE EXPLORER 388C  
PB - HOMO POLLED, NON-DILUTER  
ET ADJ. WW 796



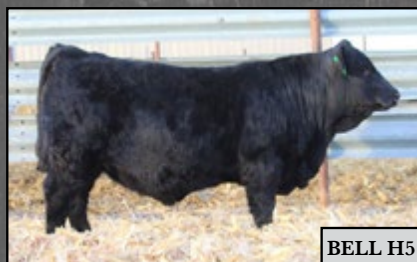
**BBS H81**

13.5 -0.5 88 132 0.27 8.6 34 77  
DKSR PROWLER F106 X LFE THE RIDDLER 323B  
PB - HOMO POLLED, HOMO BLACK  
BW 73 ADJ. WW 820



**BBS H1**

4.3 4.1 95.5 146 0.32 2.5 27 75  
BBS LOAD'M UP D202 X WFL WESTCOTT 24C  
PB - HOMO POLLED, NON-DILUTER-ET  
ADJ. WW 761



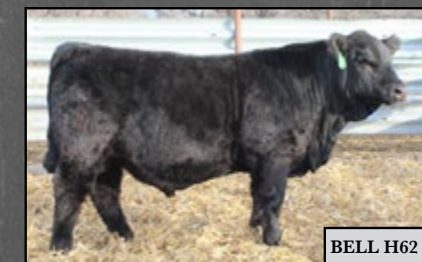
**BELL H5**

17 -2 77.3 120.6 0.27 11.4 23 62  
COLORADO BRIDLE BIT X BELL MISS RIDDLER  
ASA # (3809078) BW 81 ADJ. WW 702



**BELL H37**

6.3 4.4 79 132 0.33 3.1 26.5 65.7  
BBS MEATBALL X BBS MISS JUSTICE  
ASA # (3809030) BW 112 ADJ. WW 710



**BELL H62**

11.5 -1 73.6 114 0.25 7 26.6 63  
KWA RIDDLER X BELL MISS TRUEJUSTICE  
ASA # (3809046) BW 81 ADJ. WW 691



**Bata Brothers  
Simmentals**

"BBS"  
The Mark of  
Quality

Joe 701-331-0344

Mark 701-331-3055

jpbata@polarcomm.com

6322 Highway 35 Adams, ND 58210

BataBrothersSimmentals



### Reference Sires

Hart of War	BBS Load'M Up D202
KWA Riddler	BBS Triple Play E228
Integrate	SVS Brooks 834F
MRL Bomber	WS Proclamation
Colorado Bridle Bit	LFE The Riddler
MRL Missile	Springcreek Grand Slam
MRL Northwestern	DKSR Prowler F104
Harvie Red Summit	BDV True Grit 11X
LRX Wallstreet	MRL Elmo 6E
BBS Meatball	

Auctioneer: Joe Goggins

SALE DAY PHONE  
701-776-6393

Travis Bell  
12787 Cty. Rd 19A  
Fordville, ND 58231  
701-360-1597

Tbell@polarcomm.com  
bellsedgewoodranch





Updated December 23, 2020

By Russ Daly, Professor, SDSU Extension Veterinarian, State Public Health Veterinarian

# COVID-19

Animal caretakers understand the concept of vaccines, whether they're ones used to keep groups of livestock healthy, their dog safe from rabies, or even ones they receive themselves before flu season. Another vaccine we're learning more about is the one against COVID-19. How are COVID-19 vaccines different from the ones livestock producers are used to?

It turns out COVID-19 vaccines are quite different from those we use in animals. The technology used to create them is substantially advanced compared to the vaccines we've used over the years.

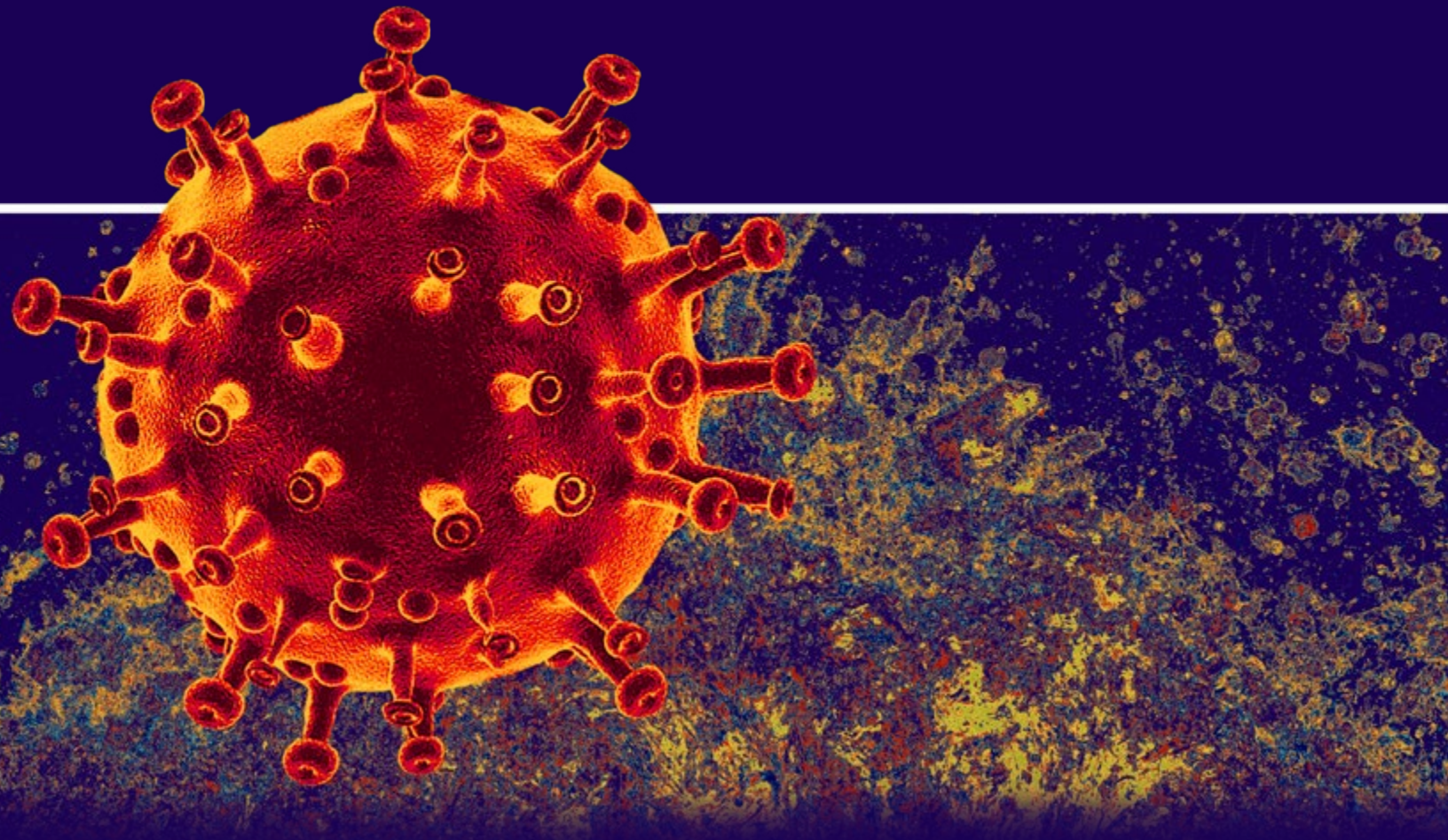
To review what we learned in science class, vaccines trick the body into thinking it's been exposed to an infectious germ. The immune response generated by the vaccine is "remembered" by the body when it actually becomes infected with the germ. The result is that disease effects are prevented or greatly diminished in the vaccinated animal.

To accomplish this, typical vaccines contain the same germ (or parts of it) we want the body to respond to immunologically. Animal vaccine manufacturers either treat the germ to kill it (while preserving enough of the structure for the immune system to respond to) or artificially grow it

## HOW ARE COVID-19 VACCINES DIFFERENT FROM THOSE WE USE IN ANIMALS?

such that it can still multiply in the body, yet not cause illness. Killed vaccines such as our dog's rabies vaccine are examples of the former, while modified-live vaccines (e.g., intranasal pneumonia shots given to calves) exemplify the latter.

...Continued on page 52





**LARGE SELECTION. GUARANTEED. AFFORDABLE.**



*50th Annual Production Sale*  
**AT THE RANCH, WESSINGTON, SD**  
**FRIDAY, MARCH 19, 2021**



Rick, NaLani,  
NaLea, Chase, & Swayzee Dunsmore  
21830 372nd Ave., Wessington SD 57381  
Home: 605-458-2425 • Rick cell: 605-354-7523  
Nalani cell: 605-350-5216



John & Carly Christensen  
Tyler, Cam, Law & Cecil Fagerhaug  
37273 216th St • Wessington, SD 57381  
Home: 605-458-2218 • John Cell: 605-350-1278  
Tyler Cell: 605-280-1416 • Cam Cell: 605-350-2018





# COVID-19

COVID-19, continued from page 50

Which of those types describes the COVID-19 vaccines? Neither one, exactly. The initial COVID-19 vaccines approved (Pfizer and Moderna products) use technology that makes killed or modified-live vaccine technology seem ancient.

Unlike most animal vaccines, these COVID-19 vaccines don't contain the germ itself. They use an artificially created protein molecule called messenger RNA (mRNA). Messenger RNA is used by cells all the time to instruct their internal machinery to make the essential proteins needed for cell survival and function.

The COVID-19 coronavirus uses its "spike protein" to infect cells in our bodies. Think of the spike protein as a "hook" that allows it to attach to and invade a body cell (a cell lining our lung surface, for example). The COVID-19 mRNA vaccine works when the mRNA molecule gets into the regular cells in our body and tells them to make a duplication of that spike protein. Our regular cells then stick that duplication

---

**Therefore, instead of relying on the vaccine germ itself to alert the body's immune system, mRNA vaccines essentially tell the body to naturally "make" the part of the germ to which the body will respond.**

---

out on their surface for the immune cells of the body to respond to. And respond they do, making antibodies that bind up the spike protein on any actual COVID-19 virus or destroying any body cells that have already been infected, cutting off the virus' reproduction.

Therefore, instead of relying on the vaccine germ itself to alert the body's immune system, mRNA vaccines essentially tell the body to naturally "make" the part of the germ to which the body will respond. Because mRNA is just a simple chain of molecules, there's no way it can cause the disease.

One peculiarity of mRNA molecules in general is that they have very short lifespans – usually measured in hours. Therefore, mRNA vaccines need to be stored and shipped in very cold temperatures in order to preserve the

molecule. In addition, the mRNA molecules are coated such that they aren't degraded by the body before they can get into our cells.

Another COVID-19 vaccine (the AstraZeneca product) uses different, yet still very advanced, technology. This vaccine consists of a live, harmless virus into which a specific gene is inserted. This gene tells the harmless virus (an adenovirus) to show the COVID-19 spike protein on its surface and stimulate the immune system that way.

Even though these vaccines use unusual technology, their trial results are very good compared to most other vaccines. This creates the promise that these technologies might be useful to create vaccines against other diseases – of animals as well as people – in the future.





# LaBatte Simmentals

*41<sup>st</sup> Annual Bull & Female Sale*

**Friday, March 5, 2021 • 1 p.m.**

Johnstone Auction Mart, Moose Jaw, SK

**Guest Consignor: East Poplar Simmentals**

Visit our website: [www.LaBatteSimmentals.com](http://www.LaBatteSimmentals.com) for information on our program, herd sires and 2021 bull sale preview and videos in late January.



IPU 35G • Fullblood Bull  
by Black Gold Elevation 20E



IPU 58G • Polled Purebred Bull  
by IPU Red Zone 16A



IPU 32G • Polled Purebred Bull  
by IPU Lieutenant 24E

## *Selling*

### 75 Bulls & 12 Open Heifers

The animals pictured here are examples of those sold in our 2020 sale. They display the depth, thickness, meat and muscle emphasized in our breeding program.

Again all our top bulls sell, featuring many generations of polled red and black genetics. The Fullblood bulls are diluter-gene tested, and many of the red and black bulls are polled and color tested.

Photos of our 2021 sale bulls will appear in the February, 2021 issue. We offer free wintering and semen testing, free delivery to central points with paperwork in order. Sight unseen purchase program available.

In case current Canadian-US border travel restrictions are still in force, LaBatte Simmentals sale animals will continue to be exportable to the US.

The use of video previews, telephone calls, our reliable sales staff and ONLINE bidding have proven to work successfully for buyers who were unable to attend previous sales in person.

To discuss your needs, or to request a 2021 sale catalogue, call or text Barry's cell at: 306-815-7900.



IPU 3G • Polled Purebred Bull  
by WHF Limitless B011



IPU 134G • Polled Purebred Bull  
by MRK Priority 3C



IPU 158G • Polled Purebred Heifer  
by R Plus Red Century 6200D

LaBatte Simmentals invites our American neighbors to participate in our 41st annual sale. **Take advantage of the current US dollar exchange rate.** As of mid-Dec. 2020, an \$8,000 bull would only cost you \$6,250 in US funds.

*LaBatte*  
**SIMMENTALS**

**BARRY & BRENDA LaBATTE**

PO Box 72, Gladmar, SK S0C 1A0

Cell: 306-815-7900

E-mail: [labatte.simm@sasktel.net](mailto:labatte.simm@sasktel.net)

Web: [www.LaBatteSimmentals.com](http://www.LaBatteSimmentals.com)

A special *Thank You* to our 2020 customers, representing US Simmental operations. We sincerely appreciate the support received from our neighbors to the south over the years.



# BEEF PRODUCERS ACROSS THE MIDWEST SEE OPPORTUNITY IN NEW CATTLE CONFINEMENT OPTIONS

As the door closes on 2020, many producers across the Midwest are weighing the pros and cons of moving beef animal feeding under roof. Here in North Dakota, it is easy to see the benefit of feeding cattle indoors on one of our many “charming” -30° nights or 101° days. As to be expected, a decision like this requires a lot of thought and consideration. The North Dakota Livestock Alliance (NDLA) and their partners are here to help throughout the entire process, including developing a strategy, siting the barns, permitting, community outreach and more.

As seen in NDLA’s Livestock Development Manual, the new barn process can be broken down into 5 steps. The first of which is ‘Take inventory of your current operations’.

Ask yourself questions like:

- What is my land base? Do I have the cropland to support the feed and manure needs? What is the local availability of my ration ingredients?
- What are the local and state zoning requirements? Do I require a permit or does my current permit need to be expanded? Picking a good site is vital to the success of a project!
- Do I have available labor? Is it from within the family or will I have to hire?
- What are my operation’s financial circumstances? What is my relationship with my banker?

- Other considerations are the new equipment needs for the facility, such as manure removal and application.

Step 2 is ‘Define your overall goals’. Perhaps investing in this livestock feeding system can provide employment for the next generation of your family operation, create a retirement plan or an additional income stream. It is also wise to consider if the 30-50-year lifetime of the building matches up with your life plans. These are big questions to ask yourself, your family and colleagues, because they are vital to the process of making sound decisions.

The next step is ‘Do your research’. During this step, reach out to as many

...Continued on page 56





# Black Simmental & SimAngus™



## 33rd Annual Production Sale

Selling 53 Yearling Bulls

# KOEPLIN'S BLACK SIMMENTALS

Tuesday, February 2, 2021

2:00pm CT • Kist Livestock • Mandan, ND



906H

1/4 SM 1/2 AN

MRL Discovery 21A x Connealy Right Answer 746

BD: 2-7-20 BW: 97 WW: 872

CE	BW	WW	YW	MCE	Milk	MWW	API	TI
11.9	0.8	80.6	132	9.4	21.7	62.0	121	75



526H

Purebred

CCR Cowboy Cut 5048Z x Olf Odin U5

BD: 2-17-20 BW: 98 WW: 884

CE	BW	WW	YW	MCE	Milk	MWW	API	TI
11.5	2.3	89.0	131	8.2	28.2	72.6	143	85



505H

Purebred

TJ Cowboy Up 529B x Triple C Bettis 572J

BD: 2-7-20 BW: 96 WW: 846

CE	BW	WW	YW	MCE	Milk	MWW	API	TI
10.9	2.5	84.8	123	6.8	23.9	66.2	145	83



958H

1/4 SM 1/2 AN

MRL Discovery 21A x Connealy Right Answer 746

BD: 2-28-20 BW: 92 WW: 784

CE	BW	WW	YW	MCE	Milk	MWW	API	TI
9.8	1.8	75.0	123	7.2	18.9	56.3	114	70



415H

Purebred

W/C Executive Order 8543B x GW-WBF Substance 820Y

BD: 2-13-20 BW: 64 WW: 782

CE	BW	WW	YW	MCE	Milk	MWW	API	TI
11.2	0.5	85.9	133	6.1	22.4	62.3	135	86



720H

Purebred

RFG/K-LER Elevation 727E x Hooks Shear Force 38K

BD: 2-16-20 BW: 97 WW: 800

CE	BW	WW	YW	MCE	Milk	MWW	API	TI
10.7	1.7	70.2	102	5.5	29.0	64.1	137	74

Planned Mating EPDs

Terry & Marci Koeplin

7035 80th St SW • Elgin, ND 58533

Home: 701-584-3292 • Cell: 701-214-8212

koeplinranch@hotmail.com

Visitors are always welcome at the ranch!

Where Friends Meet...

Sale will be broadcast for online bidding by

**DVAuction**  
Broadcasting Real-Time Auctions



resources as you can. NDLA has a strong community of experienced professionals that can guide you through the many facets of new or expanding livestock development and partnered with A1 Development Solutions to assist with all types of livestock operations. NDLA's services are free to producers. Their contact information and Livestock Development Manual can be found on the website [www.ndlivestock.org](http://www.ndlivestock.org).

Also, during the research process, you will get the chance to weigh the pros and cons of the different building styles, bedding and manure systems. Building styles include mono-slopes, hoop barns or classic gable roofs in either total or partial confinement systems. Bedding and manure systems have a wide range from bed-pack barns to the recent rise in popularity of deep-pit barns, in which the manure is captured underneath the barn with the cattle on slatted floors. The slats can be accompanied by rubber mats, similar to those found in today's

---

**"Therefore, a producer must determine if the [following] advantages bring enough return to drive profitability."**

---

pig barns. This wide range of options for building costs of different style barns, different amenities and different building materials are a substantial investment. Therefore, a producer must determine if the following advantages bring enough return to drive profitability. Keep in mind that each operation is unique and these advantages are more or less important depending on individual situations, geographical locations, land costs, nutrient costs, etc.

- Optimize feed usage resulting in better average daily gains and feed conversion rates
- Improve cattle comfort and health by removing periods of extreme cold or extreme heat within a dry, controlled environment with shade, ventilation and insect control
- Reduce land required with less square footage required per animal
- Easier to manage manure and more efficiently capture manure nutrients to incorporate into your soil health strategies
- Utilize feeds and co-products produced by your cropping systems and nearby ag processing
- Reducing the risk of manure run-off and environmental impact issues may qualify your facility for unique funding programs. For more information on environmental and cost-share programs available in North Dakota contact Scott Ressler, Environmental Services Director of the ND Stockmen's Association or Jason Wirtz, Livestock

...Continued on page 56





*The genetics worth waiting for!*

# KELLER BROKEN HEART RANCH

Thursday,

## March 4, 2021

1:00 p.m., At the Ranch, Mandan, ND

### SELLING 180 HEAD

100 High-Performance Red & Black  
Simmental & SimAngus™ Bulls and 80 Red  
& Black Simmental & SimAngus™ Heifers



H055 - 3789442 - Purebred - Homo Polled/Black  
TJ HEISMAN 388F x WS MISS SUGAR C4  
CE 10 BW 0.8 WW 97 YW 149 MCE 7 M 33 MWW 81 API 168 TI 103



H060 - 3789447 - Purebred - Homo Polled/Black  
HOOK'S BEACON 56B x WS MISS SUGAR C4  
CE 15 BW -1.7 WW 94 YW 143 MCE 11 M 31 MWW 78 API 186 TI 108



H080 - 3789467 - Purebred - Homo Polled  
KBHR SNIPER E036 x KBHR F073  
CE 16 BW -1.2 WW 86 YW 129 MCE 10 M 26 MWW 69 API 156 TI 92



H167 - 3789554 - Purebred - Homo Polled  
IR IMPERIAL D948 x KBHR C078  
CE 15 BW -1.1 WW 76 YW 114 MCE 8 M 29 MWW 67 API 163 TI 90



H071 - 3789458 - Purebred - Homo Polled/Black  
HHS MR 847D x WS MISS SUGAR C4  
CE 11 BW 1.4 WW 101 YW 157 MCE 7 M 31 MWW 82 API 176 TI 106



H124 - 3789511 - Purebred - Homo Polled  
TRPH RRR NIGHTFORCE B30 x WS MISS SUGAR C4  
CE 14 BW -0.9 WW 86 YW 128 MCE 8 M 28 MWW 71 API 182 TI 105

Dwight, Susan & Jake Keller — Luke & Katy Keller — Tessa & Thomas Osterbauer

701-471-5215 Dwight • 701-471-1142 Luke • 701-471-5065 Jake • 701-445-7350 Home

1573 55th St., Mandan, ND 58554 • kbhr@westriv.com • www.kbhrsimmental.com

**ALLIED**  
GENETIC RESOURCES

**DVAuction**



Development Specialist at the ND Department of Agriculture

- Will adding this facility to your operations save labor resources through efficiency and total daily labor-hours required

Step 4 is 'Selecting a site'. Selecting a good site is paramount! The following criteria will help narrow down your site options, but before fully committing to a specific location, a full analysis will need to be completed. At this time, NDLA urges you to contact the North Dakota Department of Environmental Quality (NDDEQ) for a Pre-permit Site Review. This free service is provided to assess the site's compliance with the rules and laws of the state. This is also a good time to consult with an Environmental Engineer. A list of these contacts can be found on the Resources page of the NDLA Livestock Development Manual

at [ndlivestock.org](http://ndlivestock.org). Some important criteria for selecting a site includes the acres available for the barn site and for manure application, proximity to high-traffic or recreational areas or wetlands, general topography, distance to utilities and vital resources including feed and water, road infrastructure, weight restrictions and a possible need for road-use agreements with local governments. Road-use agreements are not a constant but are increasing in popularity as local governments struggle for road maintenance funding. These agreements are normally discussed during the local conditional use permitting conversations.

The final step is the 'Business and operation plan', which includes the large tasks required to turn your concept into a reality, such as establishing financing, achieving water permits, state and local animal feeding permits (as needed) and construction plans. Visit [ndlivestock.org](http://ndlivestock.org) to view a Finance and Incentives Summary, links to the NDDEQ website and much more. NDLA's Community

Outreach Program is another vital tool for livestock producers seeking new development. There is a direct and undeniable correlation between community acceptance and successful livestock development.

NDLA's goal is to facilitate discussions between livestock producers and their communities to eradicate their 'fear of the unknown' about modern livestock housing and management practices, the local and state permitting procedures, and the economic advantage to welcoming livestock development. The efficacy of this program has been seen in the successful permitting of multiple hog barns and beef facilities in ND. NDLA also provides spokesperson and public speaking training for the farm families and project supporters.

To contact NDLA go to [ndlivestock.org](http://ndlivestock.org) or contact the Executive Director Amber Boeshans at [amber.boeshans@ndlivestock.org](mailto:amber.boeshans@ndlivestock.org).

Also on the NDLA website is details and recordings for the Winter Webinar Series. ■

# G & D/MARTIN

## Simmental Production Sale

New Sale Date: **Feb. 6, 2021**

1 p.m. • Lake Region Livestock • Devils Lake, ND

Selling: **35** POWERFUL Simmental & SimAngus™ Bulls  
**17** Simmental & SimAngus™ Bred Heifers  
**5** Commercial Simmental Cross Bred Heifers  
**12** Simmental & SimAngus™ Open Heifers



*Heifers like these will sell on Feb. 6!*

### G&D Simmentals

Derik & Greta Samuelson Family  
 701-370-9031 | Calvin, ND



Be sure to like us on Facebook:

**/G&D/ Martin Simmental Production Sale**

### Martin Simmentals

Jeremy & Josh Martin Family  
 701-370-1787 | Rock Lake, ND



9th Annual  
Production Sale

# Quandt Brothers

**KU** Cattle Company | Oakes, ND



PB SM • Union X Bankroll



5/8 SM • Frontier X United



PB SM • Riddler X Uproar



3/4 SM • Rio Grande X Conquest



PB SM • Benchmark X Final Choice



PB SM • Blueprint X Pendleton



3/4 SM • Main Event X Santa Fe



PB SM • Aftershock X United

# 2.16.21

*New Sale Location*

Join us at Quandt Brothers Farm • 11020 93rd St. SE • Oakes, ND 58474

Sale Starts 1 PM – Lunch Served Prior

**KU** Quandt Brothers  
Cattle Company | Oakes, ND  
@qbcattlecompany

Jason Quandt 701.710.0080  
jason@quandtbrothers.com  
Gabe Quandt 701.408.9154

Offering approximately 55  
Simmental & SimAngus™ bulls

**DVAuction**  
Broadcasting Real-Time Auctions



# CATTLEMEN'S CONGRESS: JAN. 2-17 IN OKC

The inaugural Cattlemen's Congress will be held on January 2-17, 2021 at the OKC Fairgrounds in Oklahoma City. The Cattlemen's Congress will provide an opportunity to showcase genetics, provide marketing opportunities and access to the latest industry products and services and educational opportunities for cattle breeders and industry enthusiasts.

The Cattlemen's Congress will showcase the following events and featured highlights outlined below:

- Open and Junior Breeding Cattle Shows
- Supreme Overall Open Bull and Female
- Supreme Overall Junior Breeding Heifer
- Pens of 3 and 5 Bulls and Heifers
- Junior Market Steers
- Open Prospect Steers and Heifers

- Herd Sire Displays

- Collegiate Junior and Senior Judging Contests

- Ample vendor space to feature the industry's latest products and services

Located near the historic Oklahoma National Stockyards, the OKC Fairgrounds has over 900,000 sq. ft. of barn space with the ability to house over 2,500 head of cattle at a time with both tie spaces and pens as well as display areas for the Herd Sire Display.

There are five show rings within the barn complex to hold shows and sales with the opportunity to feature association and non-association sponsored breed sales with live and/or video lots. The sale arenas are large enough to accommodate in-person bidders in a socially-distanced seating arrangement. The Oklahoma City area also has other venue alternatives for breed association functions, as well as a broad selection of hotels and restaurants.

We are looking forward to offering the Cattlemen's Congress – the premier cattlemen's event to kick off 2021.

## Simmental Schedule

- |        |   |
|--------|---|
| Jan 7  | 10:00 am Cattle Arrival and Stalling<br>Simmental Pen                   |
| Jan 8  | 10:00 am Arrival and Stalling Simmental Open/Jr                         |
| Jan 10 | 11:00 am National Simmental Pen of<br>Bull & Heifer Show                |
| Jan 11 | 8:00 am National Simmental Jr Breeding Heifer<br>3:00 pm Simmental Sale |
| Jan 12 | 8:00 am National Simmental Bull & Heifer Show                           |
| Jan 13 | 5:00 pm Supreme Open Bull & Heifer                                      |

For more information go to [www.cattlemenscongress.com](http://www.cattlemenscongress.com)



*Joint Production Sale*  
**Saturday, February 20, 2021**  
Hub City Livestock, Aberdeen, SD – 1 p.m. CST  
Flittie Simmental // Schnabel Simmental // Lazy J Bar Ranch

*2020 Top Sellers!*

**MR SR Highlife**  
G1609 #3568376

**MR SR Mic Drop**  
G1534 #3568352

Contact us for a catalog.

**Schnabel Ranch Simmentals**

**DVAuction**

Tom & Meghan Schnabel • 605-380-2811  
srsimms.com • schnabelranch@gmail.com



# Lazy C DIAMOND SIMMENTAL RANCH

**FEBRUARY 3RD, 2021 - 1PM CST**

**Selling: @ THE RANCH - KINTYRE, ND**

\*70 yearling & 18 month old Red & Black Simmental/SimAngus™ Bulls

\*SELECT female & embryo lots

PRE-SALE VISITORS ARE ALWAYS WELCOME & RECEIVE \$100 OFF A BULL PURCHASE

**VOLUME DISCOUNTS & BEGINNING RANCHER DISCOUNTS**

ALL BLACK BULLS ARE VERIFIED HOMO OR HETERO BLACK



**LCDR Impact 134F**

Featuring the first sons and daughters by Lcdr Impact 134F, our \$130,000 high selling bull in 2019. Unbelievable performance, muscle and overall power, every one is the commercial man's kind.

**LCDR 154H**



Homo Black Purebred - Lcdr Impact son

**LCDR 158H**



Homo Polled Red 3/4 SM

A powerful set of flush brothers by 9 Mile Motley and CDI Ms Trump IDIY (Dam to CDI Perspective and Lcdr/CDI Fierce) will sell!

**LCDR 214H**



Black Test Pending 3/4 SM

The first sons and daughters by EGL Firesteel will sell!

**LCDR 152H**



Homo Black PB - Lcdr Witness x WS Ms Sugar C4

Pick of his ET sisters will also sell!

**LCDR 191H**



Red - HOMO Polled - CDI Perception x Lcdr Ms Flossie 68F

**LAZY C DIAMOND RANCH**

CHRIS & JULIA NICHOLSON || 6235 23RD AVE SE || KINTYRE, ND 58549

CHRIS: 701-391-6904 || EMAIL: CNN2005@HOTMAIL.COM



"LazyCDiamondSimmRanch"

[www.lazycdiamondranch.com](http://www.lazycdiamondranch.com)

**ALLIED**  
GENETIC RESOURCES

**DVAuction** Broadcasting Real-time Auctions





# AM I FULL OF CRAP?

Calf scours are not inevitable. A strong prevention program is non-negotiable. Dependable scour prevention is essential for calf welfare, employee morale and business profitability. The immune system's response to vaccination is variable and unpredictable. That's why giving preformed antibodies instead of relying on a vaccine to stimulate antibody production is so important. I'm all for removing uncertainties. So yes, I stand by this product. (And no, I'm not.)

Learn more at  
***FirstDefenseCalfHealth.com***

***Marissa Hake, DVM***  
***Calf Vet***

© 2020 Immucell Corporation. All Rights Reserved.



THE BEST VACCINE FOR SCOURS,  
ISN'T A VACCINE.







## "Born in the Barn, Sold in the Barn" Sale

39<sup>th</sup> Annual Production Sale

**Saturday, February 6, 2021**

**Selling:** 54 Yearling Simmental & SimAngus™ Bulls  
(12 Red & 34 Black • 8 Black Angus)

12 Bred Registered Heifers • 12 Open Registered Heifers

1 p.m. CST  
At the Ranch  
Ruso, ND  
Auctioneer:  
Dustin Carter



### KSR COWBOY 158H

Black PB SM Polled • 2/19/20 • 80 lbs • 673 lbs  
WS PROCLAMATION E202 x 787U

CE	BW	WW	YW	MCE	MM	MW	CW	YG	MB
13.2	-0.4	81.6	119.7	7.8	27.3	68.7	42.3	-0.29	0.33



### KSR THOR 308H

Black PB SM Polled • 2/20/20 • 92 lbs • 669 lbs  
HOOK'S BALTIC 17B x KSR TOTAL PACKAGE 219W

CE	BW	WW	YW	MCE	MM	MW	CW	YG	MB
10.2	1.9	79.6	124.9	5.8	14.6	54.1	32.9	-0.35	0.20



### KSR MAINLINE 205H

Black 3/4 SM 1/8 Polled • 2/22/20 • 92 lbs • 690 lbs  
CDI MAINLINE 265D x SS PREFERRED VALUE R901

CE	BW	WW	YW	MCE	MM	MW	CW	YG	MB
8.0	3.1	81.7	120.5	2.0	28.7	69.0	33.5	-0.35	0.14



### KSR TOUCHDOWN 181H

Red PB SM Polled • 3/2/20 • 94 lbs • 709 lbs  
RFS END ZONE E78 x GCF/ZEIS MR COMMANDERO

CE	BW	WW	YW	MCE	MM	MW	CW	YG	MB
6.4	3.8	85.5	124.0	2.6	25.3	66.8	28.3	-0.38	0.14



### KSR ALL BEEF 370H

Red PB SM Polled • 2/24/20 • 88 lbs • 735 lbs  
WS ALL ABOARD B80 x HSR DAKOTA BEEF W217

CE	BW	WW	YW	MCE	MM	MW	CW	YG	MB
11.1	1.6	89.4	128.6	6.1	21.4	64.5	32.5	-0.51	0.29



### KSR HAVEN 176H

Black PB SM Polled • 2/19/20 • 76 lbs • 615 lbs  
CCR GRAVITY 9064A x KSR SHEAR FORCE 889W

CE	BW	WW	YW	MCE	MM	MW	CW	YG	MB
10.9	0.9	75.9	111.9	6.3	20.1	58.3	25.3	-0.39	0.11

**DVAuction** Broadcasting Real-time Auctions

49 Years Performance Testing  
24 Years Ultrasound Testing



Visit our website at:  
[klainsimmentalranch.com](http://klainsimmentalranch.com)



# KLAIN SIMMENTAL RANCH

Durnell, Darcy and Trey Klain • Tyler and Carrie Klain • Dalyce and Adam Balk  
(701) 448-2408 • 1364 20th St NW • Ruso, ND 58778



## Coming Events

JANUARY 2021			
Jan. 2-17	<b>CATTLEMEN'S CONGRESS LIVESTOCK SHOWS AND SALES</b> , Oklahoma City, OK	Feb. 6	<b>BLACK HILLS STOCK SHOW SIMMENTAL SHOW AND SALE</b> Rapid City, SD
Jan. 8-24	<b>THE NEBRASKAN LIVESTOCK SHOWS AND SALES</b> , Grand Island, NE	Feb. 7	<b>HARTMAN CATTLE COMPANY</b> 7th Annual Simmental Bull Sale, Tecumseh, NE
Jan. 20	<b>SIOUX EMPIRE LIVESTOCK SHOW SIMMENTAL SHOW AND SALE</b> , Sioux Falls, SD	Feb. 7	<b>KLINE SIMMENTAL RANCH</b> 9th Annual Production Sale, Hurdsfield, ND
Jan. 22	<b>ELLINGSON SIMMENTALS ANNUAL PRODUCTION SALE</b> , Dahlen, ND	Feb. 8	<b>DAKOTA POWER</b> Annual Bull Sale, Valley City, ND
Jan. 29	<b>DOUBLE J FARMS 47TH ANNUAL PRODUCTION SALE</b> , Garretson, SD	Feb. 8	<b>BENDA SIMMENTALS</b> Annual Production Sale, Kimball, SD
FEBRUARY 2021		Feb. 9	<b>EDGE OF THE WEST</b> Annual Production Sale, Mandan, ND
Feb. 1	<b>WICKS CATTLE SIMANGUS</b> , Simmental & Angus Annual Bull and Female Sale, Richardton, ND	Feb. 9	<b>WERNING CATTLE COMPANY</b> Annual Production Sale Emery, SD
Feb. 2	<b>KOEPLINS BLACK SIMMENTALS</b> Annual Production Sale, Mandan, ND	Feb. 10	<b>TRAXINGER SIMMENTAL</b> Annual Production Sale, Houghton, SD
Feb. 3	<b>BEGGERS</b> Big Sky Genetic Source Sale, Wibaux, MT	Feb. 10	<b>JACKPOT CATTLE COMPANY</b> Annual Bull Sale, Wessington, SD
Feb. 3	<b>LAZY C DIAMOND RANCH</b> Annual Production Sale, Kintyre, ND	Feb. 10	<b>SYS SIMMENTAL, ANNUAL</b> Production Sale, Douglas, ND
Feb. 4	<b>HART SIMMENTALS</b> Power Bull Sale, Frederick, SD	Feb. 10	<b>WILKINSON FARMS, ANNUAL</b> Production Sale, Montpelier, ND
Feb. 4	<b>STAVICK SIMMENTALS</b> Annual Production Sale, Aberdeen, SD	Feb. 11	<b>RUST MOUNTAIN VIEW RANCH</b> 10th Annual Bull Sale Mercer, ND
Feb. 5	<b>KUNKEL SIMMENTAL</b> Annual Bull and Female Sale, New Salem, ND	Feb. 11	<b>LASSLE RANCH SIMMENTALS</b> Annual Bull Sale, Glendive, MT
Feb. 5	<b>HEALY SIMMENTALS</b> , Annual Production Sale, Yankton, SD	Feb. 12	<b>TNT SIMMENTALS</b> 36th Annual Bull Sale, ONLINE
Feb. 6	<b>G&amp;D/MARTIN</b> , Annual Production Sale, Devils Lake, ND	Feb. 12	<b>BATA BROTHERS/BELL FAMILY</b> 23rd Annual Bull Sale, Rugby, ND
Feb. 6	<b>KLAIN SIMMENTAL</b> Annual Production Sale, Ruso, ND	Feb. 12	<b>WATERTOWN FARM SHOW SIMMENTAL SHOW AND SALE</b> , Watertown, SD
		Feb. 13	<b>CK EFFLING AND WAGER CATTLE</b> Annual Bull Sale, Highmore, SD
		Feb. 13	<b>KENNER SIMMENTAL</b> Annual Production Sale, Leeds, ND
		Feb. 13	<b>EKSTRUM SIMMENTALS</b> Annual Production Sale, Kimball, SD
		Feb. 13	<b>RYDEEN FARMS</b> , 23rd Annual Visions Sale, Clearbrook, MN
		Feb. 15	<b>RENDEVOUS FARMS</b> 17th Annual Holiday Monday Sale, Ste. Rose du Lac, MB
		Feb. 16	<b>POWER BY DESIGN - QUANDT BROS</b> Annual Production Sale, Oakes, ND
		Feb. 17	<b>M&amp;J/ GLASMAN FARMS SIMMENTAL &amp; ANGUS</b> 2 Year Old Bull & Femal Sale, Russell, MB
		Feb. 19	<b>R&amp;R CATTLE COMPANY</b> Annual Bull and Female Sale, Chamberlain, SD
		Feb. 19	<b>DAKOTA XPRESS</b> Annual Production Sale, Mandan, ND
		Feb. 20	<b>SCHNABEL SIMMENTALS</b> , Annual Production Sale, Aberdeen, SD
		Feb. 20	<b>HOIBY SIMMENTALS</b> Annual Production Sale, McGregor, ND
		Feb. 20	<b>DOUBLE T SIMMENTALS</b> Annual Production Sale, Turtle Lake, ND
		Feb. 20	<b>THYEN SIMMENTALS</b> , Annual Production Sale, Hayti, SD
		Feb. 22	<b>LEHRMAN FAMILY FARMS</b> Annual Production Sale, Mitchell, SD
		Feb. 23	<b>DECKERT SIMMENTAL RANCH</b> , Annual Production Sale, Steele, ND
		Feb. 23	<b>TSN SIMMENTALS</b> Annual Production Sale, Platte, SD
		Feb. 24	<b>C DIAMOND SIMMENTALS</b> Annual Production Sale, Dawson, ND





# 21st Annual ★ ★ ★ ★ KING OF THE RANGE PRODUCTION SALE

## THURSDAY, FEB. 4, 2021

1:00 P.M. CST • Aberdeen Livestock • Aberdeen, SD

### SELLING: 100 RED & BLACK SIMMENTAL BULLS *80 Performance & 20 Calving Ease*



**STAV CERTIFIED 11H** • #3699871  
Homo Black/Polled • Purebred  
WS CERTIFIED E151



**STAV DRIVER 23H** • #3699892  
Hetero Black/Homo Polled • Purebred  
WAGR DRIVER 706T



**STAV HOSS 41H** • #3699929  
Homo Black/Polled • 5/8 SM  
WINC HOSS 562C



**STAV RED VIPER 30H** • #3700001  
Homo Polled • Purebred  
GB/SAS RED VIPER F634



**STAV PIPELINE 51H** • #3699951  
Homo Black/Polled • 3/4 SM  
STAV PIPELINE 4E



**STAV CROSSFIT 77H** • #3699994  
Hetero Black/Homo Polled • 5/8 SM  
TJ CROSSFIT 570C



**STAV RED WAVE 33H** • #3700018  
Homo Polled • Purebred  
STAV RED WAVE 105F



**STAV MEGA WIDE 110H** • #3700061  
Homo Black/Polled • 5/8 SM  
KINNS MEGA WIDE 3316E

#### SIRES REPRESENTED:

Kinns Mega Wide 3316E  
STAV King Of Clubs 106Y  
STAV Pipeline 4E  
TJ Crossfit 570C  
WINC Hoss 562C  
WS Certified E151  
GB/SAS Red Viper F634  
STAV Red Wave 105F  
MR NLC Cash Value 8037F

**DVAuction**

**Presale Viewing, Social & Seminar**  
**February 3 • 1:00-8:00 p.m.**  
**Aberdeen Livestock**

**Want to see the day-to-day  
action at Stavick Simmental?**

*Like our page on Facebook to follow along with us.*



## STAVICK SIMMENTAL



Mike, Myra, Owen & Liv Stavick  
605-237-4663 (Mike)  
605-551-9016 (Owen)  
stavickx@tnics.com



**stavicksimmental.com**



## Coming Events, continued

Feb. 27	<b>LEWIS FARMS</b> Annual Production Sale, Spruce Grove, AB
Feb. 28	<b>RAML CATTLE</b> Annual Production Sale, Goodwin, SD
<b>MARCH 2021</b>	
Mar. 2	<b>DOLL CHAROLAIS &amp; SIMMENTAL</b> Ranch Annual Production Sale, Mandan, ND
Mar. 3	<b>NORTHWEST ND SELECT SALE,</b> Stanley, ND
Mar. 4	<b>KELLER BROKEN HEART RANCH</b> Annual Production Sale, Mandan, ND
Mar. 5	<b>LABATTE SIMMENTALS,</b> Annual Production Sale, Moose Jaw, SK
Mar. 5	<b>EICHACKER SIMMENTALS</b> Annual Production Sale, Salem, SD
Mar. 6	<b>MRL RANCH</b> Annual Production Sale, Carievale, SK
Mar. 6	<b>ROCKY KNOLL</b> Annual Production Sale, Aberdeen, SD
Mar. 7	<b>R PLUS</b> 21st Annual Production Sale, Estevan, SK
Mar. 7	<b>WINDY CREEK CATTLE COMPANY</b> Profit through Performance Sale, Spencer, SD
Mar. 8	<b>ASHWORTH FARM &amp; RANCH</b> Annual Production Sale, Oungre
Mar. 8	<b>CANADIAN CENTRAL BULL &amp; FEMALE SALE,</b> Winnipeg, MB
Mar. 9	<b>BONCHUK FARMS</b> Annual Bull Sale, Virden, MB
Mar. 13	<b>I-29 BULL RUN</b> Annual Production Sale, Sioux Falls, SD
Mar. 15	<b>OAKVIEW/PERKIN/TRIPLE R</b> Simmental Bull Sale, Brandon, MB

Mar. 15	<b>WILLKINSON FARMS SIMMENTAL</b> Breeding for the Future Sale, Montpelier, ND
Mar. 15	<b>DIAMOND M SIMMENTALS,</b> Annual Production Sale, Hiawatha, SK
Mar. 16	<b>PRAIRIE PARTNERS</b> Bull & Female Sale, Killarney, MB
Mar. 17	<b>TRANSCON'S PREMIUM BEEF</b> Simmental Bull Sale, Neepawa, MB
Mar. 19	<b>NLC SIMMENTAL RANCH/3C CHRISTENSEN RANCH</b> 50th Annual Production Sale, Wessigton, SD
Mar. 19	<b>HIGH BLUFF STOCK FARMS</b> Charolais & Simmental Bull Sale, Inglis, MB
Mar. 20	<b>PROUDLY WESTERN SIMMENTAL BULL SALE,</b> Whitewood, SK
Mar. 22	<b>TRANSCON'S CATTLE COUNTRY</b> Simmental Bull Sale, Neepawa, MB
Mar. 23	<b>HALL STOCK FARM</b> Annual Production Sale, Berthold, ND
Mar. 25	<b>WHEATLAND CATTLE COMPANY</b> Annual Bull Sale, Bienefait, SK
TBA	<b>TRANSCON'S WINNIPEG SIMMENTAL BULL SALE,</b> Winnipeg, MB
<b>APRIL 2021</b>	
April 8	<b>TSN SIMMENTALS</b> Annual Production Sale, Platte, SD
April 13	<b>THOMAS RANCH</b> Annual Production Sale, Harrold, SD
<b>MAY 2021</b>	
May 4	<b>7N SIMMENTAL RANCH</b> Annual Production Sale, Medina, ND
<b>JULY 2021</b>	
July 5-11	<b>NATIONAL CLASSIC,</b> Grand Island, NE
July 23-31	<b>NORTH DAKOTA STATE FAIR LIVESTOCK SHOWS,</b> Minot, ND

## ADVERTISER'S INDEX

3C Christensen Ranch .....	51
Bata Brothers .....	49
Beggar's Diamond V Ranch .....	33
Bell Simmentals .....	49
Benda Ranch .....	31
CK Cattle .....	BC
Dakota Power Simgenetic Bull Sale .....	4
Dakota XPress .....	21
Deckert Sim-RedAngus .....	23
Diamond M Cattle Company .....	47
Doll Ranch .....	28
Double J Farms .....	35
Double T Simmentals .....	9
Edge of the West Sale .....	32
Eichacker Simmentals .....	11
Ekstrum Simmentals .....	29
Ellingson Simmentals .....	7
G&D/Martin Simmental .....	58
Hart Simmentals .....	5
Hartman Cattle Company .....	IFC
Healy Simmental .....	16
Hoiby Simmental Ranch .....	37
Immucell .....	62
Keller Broken Heart Ranch .....	57
Kenner Simmental Ranch .....	IBC
Klain Simmental Ranch .....	63
Kline Simmental Ranch .....	17
Koeplin's Black Simmentals .....	55
KU Cattle Company .....	59
Kunkel Simmentals .....	27
LaBatte Simmentals .....	53
Lazy C Diamond Simmental Ranch .....	61
NLC Simmental Ranch .....	51
Quandt Brothers .....	59
Rendevous Farms .....	41
Rydeen Farms .....	43
S/M Fleckvieh Cattle .....	34
Schnabel Ranch Simmentals .....	44, 60
SRF Simmentals .....	6
Stavick Simmental .....	65
Sys Simmentals .....	13
Thyen Simmentals .....	25
TNT Simmentals .....	39
Traxinger Simmentals .....	45
TSN Simmentals .....	19
Wager Cattle .....	BC
Wicks Cattle .....	18
Wilkinson Farms Simmentals .....	15





25<sup>TH</sup> ANNUAL PRODUCTION SALE  
**FEBRUARY 13, 2021** 1:00 PM CST / AT THE RANCH / LEEDS, ND  
 Selling 130 Bulls & 65 Bred Heifers / Black & Red - Purebred, SimAngus™ & Red Angus

# YOU HAVE GOALS.

## YOUR CATTLE SHOULD TOO.

**KENNER SIMMENTAL RANCH**

**FOCUSED ON CATTLE BRED FOR QUALITY, PERFORMANCE  
 AND LONGEVITY TO IMPROVE YOUR BOTTOM LINE!**



**H542 - PB**

Koch Big Timber x RBS Boise  
 EPDs 13 1.1 94 141 7 34 81 API 134 TI 87  
 Over 35 Purebred Black Simmental bulls sell!



**H443 - PB**

Mr GD Hard Rock x WS Prime Time  
 EPDs 13 -0.1 86 133 7 37 80 API 140 TI 86  
 Over 60 Red Simmental/SimAngus,  
 including many Hard Rock sons will sell!



**H6 - 3/4**

TJ Franchise x Ellingson Legacy  
 EPDs 13 1.5 87 129 8 31 74 API 115 TI 76  
 Around 40 SimAngus Black Bulls Sell!



**G1257 - 3/4**

KS Newton x KS Penny X395 (KS Saturn)  
 EPDs 14 -2.3 54 86 13 32 58 API 122 TI 64  
 Bred to ALC Mr Right Kind C13



**G417 - PB**

NLC Progressive x KS Triple Play B25  
 EPDs 15 -1.2 73 107 8 28 65 API 156 TI 85  
 AI Bred to Colorado Bridle Bit

### ENTER TO WIN!

Vist the farm to view the sale of-  
 fer from December 1<sup>st</sup> through  
 February 12<sup>th</sup> to be entered to win  
 a **\$500 SALE CREDIT** to be  
 used at our 2021 production sale!



Roger, Jeanette & Erika Kenner  
 Erika 406-581-1188 / Roger 701-466-2800  
 Herdsman, Bryan Leapaldt 701-466-2553 • C. 701-739-8764  
 erika.kenner@gmail.com / 5606 57th St NE Leeds, North Dakota 58346

**WWW.KENNERSIMMENTAL.COM**

**DVAuction** Videos Online DVAuctions by Mid-January



ES Right Time FA110-4



# RIGHT TIME

**ASA: 3481590 | Homozygous Black | Homozygous Polled**

The first sons of ES Right Time FA110-4 to sell! One of the most exciting and relevant young sires in North America. Semen is NOT available on the open market! ES Right Time FA110-4 charts top 5% WW, top 10% YW, top 15% ADG, top 15% CW, and top 15% Terminal Index. The absolute BEST footed Simmental Bull in the business... a solid foundation for everything essential in the industry!



**FRKG CKCC PLATINUM 009H ET | ASA: 3809966**  
SIRE: MR CCF 20-20 | MGS: PROFIT  
Homo Black & Homo Polled | ADJ WW: 773



**CKCC SERENA'S CASH 0813H ET | ASA: 3787461**  
SIRE: SWSN CASH FLOW 81E  
MGS: MR NLC UPGRADE U8676 | ADJ WW: 825



**CKCC MR CURRENCY 0631H ET | ASA: 3786566**  
SIRE: RUBY'S CURRENCY 7134E | MGS: STF DOMINQUE R170  
Homo Black & Homo Polled | ADJ WW: 718



**CKCC RIGHT TIME 0639H ET | ASA: 3786555**  
SIRE: ES RIGHT TIME FA110-4 | MGS: WCS MR RAZOR 1044Y  
Homo Black & Homo Polled | ADJ WW: 717



**TMAS CKCC RIGHT TIME 0669H | ASA: 3801152**  
SIRE: ES RIGHT TIME FA110-4 | MGS: WS PILGRIM H182U  
ADJ WW: 660



**CKCC MR CURRENCY 0625H ET | ASA: 3786565**  
SIRE: RUBY'S CURRENCY 7134E | MGS: STF DOMINQUE R170  
Homo Black & Homo Polled | ADJ WW: 751

## CK CATTLE & WAGER CATTLE PRODUCTION SALE

SATURDAY | FEBRUARY 13, 2021 | 3:00 PM

*Highmore, South Dakota*

**75 SIMMENTAL,  
SIMANGUS & HEREFORD BULLS**

*Sire groups include Profit, Edge, 8700, Outlaw,  
High Caliber, Currency, Turning Point, Stunner,  
& R5 Solution E111*

**45 SIMMENTAL & SIMANGUS  
BRED HEIFERS**

*Safe AI to the hottest bulls in the industry!*

**ASA**  
**The**  
**PERFORMANCE**  
**RECORDS**  
**CKEFFLING.COM**  
**DVAuction**

**CK cattle**  
**CHRIS & KRISTI EFFLING**  
Cagney, Chesney, & Kenidey | Chris: 605.769.0142  
Kristi: 605.769.1308 | Cagney: 605.870.0368

**Wager cattle**  
**LANNY & JAYNE WAGER**  
Dusty & Aimee Wager  
Lanny: 605.769.1211 | Dusty: 605.769.5010

Sale Management by:  
**INNOVATION**  
AgMarketing, LLC  
Jered Shipman: (806) 983-7226  
Graham Blagg: (530) 913-6418  
Tim Anderson: (605) 682-9343  
**innovationagmarketing.com**