

South Dakota  
**SIMMEN TELLER & SIMMENTAL SCENE**  
North Dakota  
FEBRUARY 2024



# Sorenson Ranch

Your source for composite *Simmental*  
bulls that are bred for:

*Docility*  
**Longevity**  
**Fertility**

**& Calves that PUSH DOWN the Scale**

Average Actual Birth Weight: 80 lbs.

Average Adjusted 205: 756 lbs.

## Reference Sires:



BDV GB Ignite 173F - ASA# 3553934



Tehama Tahoe B767 - ASA# 3396482



LBS Contractor C17 - ASA# 3364850



K-LER Franchise 804F - ASA# 3430423



KECH Mr. 875 - ASA# 3836635



Colorado Bridle Bit E152 - ASA# 3271382

Join Us: **March 4, 2024**

**1 pm - Sifting Bull Auction, Williston, ND**

**Free Feeding - Free Delivery within 500 miles**

Selling: **42 SimAngus Bulls**  
**45 Commercial Open Heifers**

Free feeding and delivery offered from sale day to when bull(s) are delivered. Bulls will be fed free of charge, guaranteed semen tested, and delivered by approximately June 1st.

### Additional Reference Sires:

Bridle Bit GPS H078 - ASA# 3724830

OMF Epic E27 - ASA# 3317371

KBHR Honor H060 - ASA# 3789447

Hart 223J - ASA# 3896428

**Sorenson  
Ranch**

Loren Sorenson: (701) 641-1140 or (701) 694-2627

Grenora, ND • e-mail: lsorenson2627@gmail.com

Check us out on Facebook: Sorenson Ranch

www.sorensonranch.com

This sale will be broadcast live on the internet.

**DVAuction**

Broadcasting Real-Time Auctions

Real-time bidding & proxy bidding available.



[www.NorthDakotaSimmental.com](http://www.NorthDakotaSimmental.com)

**Davis Kinn, Turtle Lake ..... President**  
(701) 400-5108 ..... dkinn10@hotmail.com

**Jason Quandt, Oakes ..... Vice President**  
(701) 710-0080 ..... jason@quandtbrothers.com

**Bryan Leapaldt, Leeds ..... Director**  
(701) 739-8764 ..... bleapaldt@gmail.com

**Kelly Hanson, Hannaford ..... Director**  
(701) 789-1391 ..... kelly.hanson@centralplainsag.net

**Kim Myers, Kathryn .... Secretary/Treasurer**  
(701) 308-1018 ..... gkmyers@outlook.com

**Wyatt Hansen, Ryder ..... Director**  
(701) 720-4850 ..... wyattnhansen@gmail.com

**Lyndon Hoiby, McGregor ..... Director**  
(701) 641-1083 ..... hoibysim@nccray.com

**Ethan Steffan, Killdeer ..... Director**  
(701) 290-0371 ..... ethansteffan@gmail.com

**Derek Sys, Douglas ..... Director**  
(701) 509-5870 ..... dj.sys@hotmail.com

**Levi Elliot, Galesburg ..... Director**  
(701) 430-0661 ..... cattle.elliott@gmail.com



[www.SouthDakotaSimmental.com](http://www.SouthDakotaSimmental.com)

**Bridget Twedt, Beresford ..... President**  
(605) 777-5404 ..... bridget.twedt@k12.sd.us

**Brett Tostenson, Highmore . Vice President**  
(320) 226-3915 ..... blacksandranch@gmail.com

**Kevin Blagg, Salem ..... Treasurer**  
(605) 240-0015 ..... kblagg@firstdakota.com

**Colton Buus, Canova ..... Secretary**  
(605) 214-3532 ..... colton.buus@gmail.com

**Tyrell Mitchell, Kadoka ..... Director**  
(605) 488-0119 . tcmsimentals@outlook.com

**Tom Harris, Plankton ..... Director**  
(605) 999-8803 ..... harriscattle6@gmail.com

**Jeremy Lehrman, Spencer ..... Director**  
(605) 530-5909 ..... windycreek@triotel.net

**Mike Thyen, Hayti ..... Director**  
(605) 520-0575 ..... tbirdlab@itctel.com

# South Dakota SIMMENTELLER & North Dakota SIMMENTAL SCENE

**Editor** ..... Tamra Heins, New Salem, ND  
(701) 391-6431 · tamra@strategicconcepts.biz

**Design** ..... Sheyna Strommen, Solen, ND  
(701) 290-3886 · strommen@westriv.com

The following terms and conditions have been agreed on by the North Dakota & South Dakota Simmental Association's Board of Directors and the Publication Committee:

### Advertising Space Rates

Size .....	4C
Full Page: .....	\$675
1/2 .....	\$475
1/4 Page .....	\$275

### Advertising Deadlines

Issue .....	Deadline
January, 2024 .....	Dec. 15, 2023
February, 2024 .....	Jan. 15, 2024
November, 2024 .....	Oct. 15, 2024

**Terms:** All advertising accounts are due and payable as invoiced. Interest charges of 1% per month will be assessed to accounts that are 30 days past due.

**Delinquent Advertiser's Account:** Advertisers knowingly and expressly agree and consent that, whenever accounts receivable for an advertiser have not been paid as of 90 days from date involved, advertising privileges will be suspended until full payment has been received.

**Copy Changes:** Alterations in advertising copy, if requested after closing dates, will be permitted only if time allows.

The North Dakota and South Dakota Simmental Associations and this publication reserve the right to refuse any advertising copy at our sole discretion. The North Dakota and South Dakota Simmental Associations and this publication assume no responsibility for the accuracy of the advertising content submitted. Advertisers assume all responsibility for the accuracy and truthfulness of submitted advertising containing pedigrees or statements regarding performance.

**Editorial Content:** Opinions expressed are those of the writer and not necessarily those of the North Dakota and South Dakota Simmental Associations or of this publication. Photographs and manuscripts are welcome, but no responsibility is assumed either while in transit or while in this office.

**About the Cover:** Photo captured by Terry Ellingson of Ellingson Simentals, Dahlen, ND

PAW **JUAN PABLO** 121J

**GRAND CHAMPION SIMMENTAL BULL**  
AT FARMFAIR INTERNATIONAL



**SONS FROM THESE CHAMPIONS WILL SELL IN OUR**

**20<sup>th</sup> Annual Bull Sale**  
**MARCH 21, 2024**

WHEATLAND

# DIMENSIONAL<sup>1147J</sup>

NATIONAL CHAMPION SIMMENTAL BULL  
AT BRANDON AG EX



SIMMENTAL » ANGUS » TRUE F1'S » 3/4 & 7/8 SIMM » CALVING EASE » POWER BULLS » BALDIE BULLS

**Wheatland**  
*Cattle Co.*

Vernon, Denise, Riley & Cody-Ray Lafrentz  
Box 118, Beinfait, SK S0C 0M0  
C: 306-421-2297  
Riley: 306-461-8200  
Cody-Ray: 620-960-9831

**Wheatland**  
*Michelson*

Shane, Alaina, Mckenna &  
Kaden Michelson  
C: 403-363-9973



# Heins Sight...

By Tamra Heins, Editor

Welcome to our February issue. The Bull Sale season is in full swing and so far, prices are looking good and optimism is high that prices will continue to be positive.

Our ability to gather information is also at an all-time high. I hope you enjoyed the podcast series and found new ways to gather information and maybe found some entertainment a long the way.

The February issue is our final issue for the season. I truly appreciate everyone who invests their marketing dollars with us. I know that marketing costs continue to rise for everyone and the fact you trust us to reach your customers is appreciated.

During our off-season check out our SD SimmenTeller & ND Simmental Scene Facebook page for sale updates and information provided by both state associations. We are always looking for content for both social media and print media, feel free to share your ideas.

The November issue will be here before you know it. Until then, good luck with all your upcoming seasons of calving, ai'ing, planting, haying, harvest and weaning. Then, God willing, we will do it all over again.

In the meantime, don't forget to Enjoy the Day!



**Saturday**  
**March 9, 2024**  
**6:00 PM**  
**W.H. Lyon Fairgrounds Expo Bldg.**  
**Sioux Falls, SD**

**AN ELITE OFFERING OF  
 HEREFORD, ANGUS  
 & SIMMENTAL BULLS,  
 PLUS REGISTERED &  
 COMMERCIAL FEMALES**

FOR CATALOG, VIDEOS AND UPDATES VISIT: [\*\*WWW.I29BULLRUN.COM\*\*](http://www.i29bullrun.com)



For full details, please contact the I-29 Bull Run Breeders:



Follow us for sale updates:  
[facebook.com/i29bullrun](https://facebook.com/i29bullrun)



**Tim & Philip Eggers**  
 Sioux Falls, SD  
 605.351.5438



**Erik Scott 605-214-1332**  
**Craig Broughton 605-951-7595**  
 Canton SD



**Troy & Shannon Rasmussen**  
 Aurora, SD  
 605.690.0100



**Andy & Janna Mark**  
 Viborg, SD  
 712.441.5920



# 4th Annual Production Sale

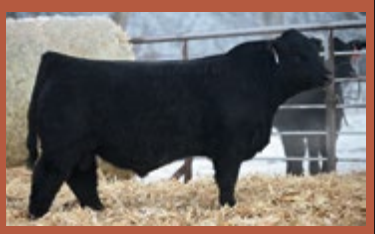
**THYEN**  
*Simmentals*

**SOLSAA**  
*Angus*



**MADER WALK THIS WAY**

Sire of \$280,000 Walk the Line. Four of his sons are selling on February 17th.



**BULLS LIKE HIM**

Sired by OMF Epic E27 will be on this year's production sale.



**MUSGRAVE JUMBO**

Jumbo was the 2nd high selling bull at the 2020 Musgrave Bull Sale to Styles Angus. Jumbo is powerfully thick and square made, a style machine. 4 progeny and 4 half sibs sell.



**SAF BARRICADE 1784**

The \$11,000 2022 high selling bull at the Solsaa Angus production sale going to Gilliland Livestock, CA. First progeny sells as Lot 3, as well as 8 half sibs like him.

**MIKE THYEN 605-520-0575**  
**ERIC SOLSAA 605-237-0984**

## FEBRUARY 17, 2024

9:00-1:00.....VIEWING OF BULLS  
11:00-1:00.....COMPLIMENTARY LUNCH  
1:00.....LIVE AUCTION

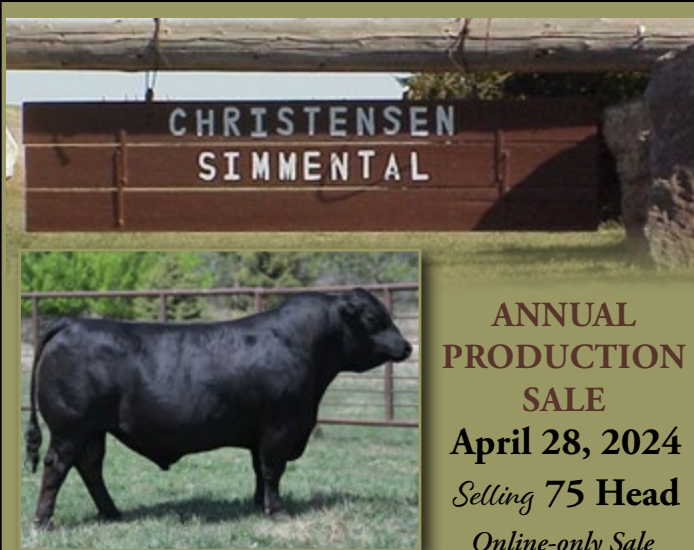
**45142 183RD STREET**  
**(3.5 MILES WEST OF KONES KORNER)**  
**HAYTI, SOUTH DAKOTA**

*Bid Online!* → *Scan Me!*

This sale will be broadcast live on the internet.  
**DVAuction**  
Broadcasting Real-Time Auctions  
Real time bidding & proxy bidding available.



[www.dvauction.com/events/206635](http://www.dvauction.com/events/206635)



**CHRISTENSEN  
SIMMENTAL**

**ANNUAL  
PRODUCTION  
SALE**  
**April 28, 2024**  
*Selling 75 Head*  
*Online-only Sale*  
*Ends at 6 p.m.*

**SIRES INCLUDE:**  
BCLR Manifesto G352  
Koch Big Timer 685D  
Deer Valley Growth Fund  
River Creek Gold 401J  
TJ Stone Cold 336G

**DVAuction**

---

**CHRISTENSEN SIMMENTAL**  
37548 221st Street • Wessington Springs, SD 57382  
Chris • 605-539-9522  
Amy • 605-350-0103  
Alex • 605-350-0200

*Visitors always welcome*  
7N 7W of Wessington Springs, SD

*E-mail for more info: [chrishei@venturecomm.net](mailto:chrishei@venturecomm.net)*



ASA Board members pictured, L to R, are Mark Smith, Chad Cook, Victor Guerra, Greg Walthall, Tim Clark, Chris Ivie and Doug Parke

## 56TH ANNUAL MEMBERSHIP MEETING 2024

### ASA CHAIRMAN ANNOUNCED AT ANNUAL MEETING

Doug Parke of Paris, KY, and 2023 ASA Chairman, passed the gavel to Chris Ivie during the 2024 Annual Meeting on January 2. Chris Ivie of Summertown, TN, will serve as the 2024 ASA Chairman. Congratulations, Chris, and thanks to Doug for his service and dedication to ASA's membership.

Highlights from the 56th Annual Membership Meeting  
ASA's Annual Membership Meeting held on January 2 summarized the ASA Board of Trustees' work in 2023. To learn about the meeting's highlights, see below:

- Annual reports summarizing work done by the Activities & Events, Breed Improvement, Finance, Growth & Development, Policy & Procedures, and Simbrah committees, and the ASA Publication and American Simmental-Simbrah Foundation boards were given. To read the annual reports, click here.

- The newly elected trustees Mark Smith (Eastern Region) and Greg Walthall (South Central Region), were installed. Trustees elected to their second terms, including Chris Ivie (Eastern Region), Tim Clark (North Central Region), Victor Guerra (South Central Region), and Chad Cook (Western Region), were also recognized.

- The 2024 Executive Committee was announced as:  
**2024 Chairman** - Chris Ivie  
**Vice Chairman** - Victor Guerra  
**Treasurer** - Scott Trennepohl  
**Executive Position #1** - Chad Cook  
**Executive Position #2** - Ryan Thorson

- Retiring trustees Barry Wesner (Eastern Region) and Brandon Callis (South Central Region) were recognized for their time on the ASA board.

The American Simmental Association would like to congratulate the newly elected trustees and those taking new leadership positions, and thank Barry Wesner and Brandon Callis for their time and service to ASA's membership.



**CLARITY  
IS CASH**

SimGenetics  
PROFIT THROUGH REPRODUCTION

Today's industry pays big for heavy fat steers, but your pocketbook demands smaller cows. What to do? The answer is clear, dependable data and the courage to bypass traditional straightbreeding.

Simmental-influenced cows are an average **74 lb.** lighter at maturity than Angus-sired counterparts.\*

Meanwhile, packers pay \$20 to \$34 more for SimAngus™ and Simmental-sired steers than English-sired calves.†

Finally, raise efficient cows and high-performance calves. The proof is in the data – and the cash.

**\$20+  
MORE PER  
CARCASS**

**74lb.  
LIGHTER COWS**

**STAND STRONG  
SIMMENTAL**  
406-587-4531 • [simmental.org](http://simmental.org)

\*SOMANI, Zimmerman, M., et al., "Breed and heritability effects for mature weight in beef cattle," J. of Anim. Sci., Vol. 99, 2005. Adjusted for sex sampling, Angus was the heaviest at maturity among 196 61 breeds evaluated. †Source: American Angus Association, "USDA's new carcass value program evaluation conducted by 100 Simmental and 100 Angus steers from 2010 to 2018." The study revealed that 200 Simmental cows bred by 75% Angus. ††Effect of sire to herd group on carcass value of feeder cattle harvested through 76 County Steer Carcass Factory Cooperative, Ames, Iowa, 2010 to 2018. Oble, R., & King, M. (March 2019). Kansas State University. Relationship Among Sire-Breed Group, Call Size and Year Group on Carcass Traits. Breeds represented in the English-sired group: Angus, Red Angus, South Devon, Hereford and Shorthorn.



# DECKERT

*Generations  
of Genetics*

With over 50 years of experience raising Simmental genetics, we have pinpointed the traits that increase our customers' profit margin.

The balance of hybrid vigor, calving ease, fleshing ability and fertility complement and enhance any cow herd to produce calves that excel through all stages.

**\$500 Sale Credit**  
**Drawing**  
per buyer visiting  
the ranch



EPDs as of 1-23-24



**Lot 2 - L3**  
#4213933 | Sire: ROCKIN H CAPTIVATE J75  
Purebred Simmental | API: 156.4 · TI: 90.2  
BW: 73 · 205 WT: 731 ET



**Lot 3 - L25**  
#4213977 | Sire: ROCKIN H CAPTIVATE J75  
Purebred Simmental | API: 146.3 · TI: 97.8  
BW: 86 · 205 WT: 831



**Lot 9 - L65**  
#4214062 | Sire: MR SR MIC DROP G1534  
Purebred Simmental | API: 135.2 · TI: 85.1  
BW: 83 · 205 WT: 801



**Lot 17 - L13**  
#4213950 | Sire: GW HILGER ONE 454H  
5/8 SM 9/32 AR 3/32 AN | API: 154.5 · TI: 94.7  
BW: 86 · 205 WT: 796



**Lot 21 - L5**  
#4213994 | Sire: MR SR RED OCTOBER G1761  
3/4 SM 1/4 AR | API: 155.9 · TI: 95.9  
BW: 83 · 205 WT: 770



*Bred Heifer*  
**Lot 43 - K213**  
#4085701 | Sire: HOOK'S DELEGATE 64D  
3/4 SM 7/32 AR 1/32 AN | API: 140.8 · TI: 83.5  
Service Sire: Redhill Burley 99J

**DVAuction** Broadcasting Real-time Auctions

Request  
a Catalog



*Annual Production Sale*

**Tuesday, February 27, 2024**

*New Location!* Sale: 2 p.m. CST · At the Ranch

35 Yearling Bulls · 4 2-Year-Old Bulls · 25 Bred Heifers



**DECKERT**  
Simmental Ranch

Justin and Carrie Deckert:  
(701) 943-2477  
Jaxon Deckert: (701) 425-5882  
24952 392nd St NE · Arena, ND 58494  
dsrscows@bektel.com

30TH ANNUAL

# MRL

## ANNUAL BULL SALE

Saturday, March 2, 2024

at the ranch, Carievale, SK

### 180 Bulls Sell

- All bulls born, bred and developed right here at MRL
- Large sire groups 1/2 and 3/4 brothers  
Pens full of uniform bulls in every category
- **Sight Unseen Buyer's Program**  
(Can't make it sale day, give us a call. Almost 25% of our bulls sell sight unseen. Many repeat customers year after year.)
- Semen evaluated and guaranteed
- Free delivery to Dunseith or North Portal Ports of Entry and we cover all health costs
- Only 12 miles north of Sherwood, N.D., jump in the car and come have a look
- Internet Bidding DVAAuction or Dlars.
- Sound rugged bulls developed on a high roughage ration (Born, bred and fed to work and stay working)
- Extra Age bulls ready to cover some ground 50 May/June coming two year olds and January/February born yearlings

**McMillen Ranching Ltd.** • Carievale, SK

Lee: 306-928-4820 C: 306-483-8067

Dave: C: 306-483-8660

Jim: 306-928-4636 C: 306-483-7986

Sale Barn: 306-928-2011

F: 306-928-2027 • E: [mrl@sasktel.net](mailto:mrl@sasktel.net)

[www.mrlranch.com](http://www.mrlranch.com)

For catalogues, videos or more info. please contact us  
View Catalog at [www.mrlranch.com](http://www.mrlranch.com)

*Thank you to our U.S. customers.* Each and every year for the past 20+ years, almost 1/3 of our bulls sell to top cattlemen in the Northern States. Hundreds of bulls and dozens of the top ranches year in and year out! ***Come see for your self what keeps them coming back year after year.***

### Representing 60 Red Simmental Bulls



MRL 129L



MRL 118L



MRL 71L



MRL 32L

### Representing 60 Black Simmental Bulls



MRL 104L



MRL 122L



MRL 45L



MRL 114L

### Representing 60 Red and Black Angus Bulls



MRL 34L



MRL 85L

### Representing 60 May-Born Coming Two-Year-Old Bulls



MRL 309K



MRL 286K



50th Anniversary Specials

- \*SELLING PICK of the ES Open Heifers
- \*ONE FREE LOT given away at end of the auction (up to \$10,000)
- \*Many other giveaways on sale day!

**E**  
**S**  
**Eichacker**  
**Simmentals**  
With Guest Breeder:  
**JK ANGUS**

Friday, March 1st at 12 Noon  
at the Farm, Salem, SD

*Annual*  
*Production Sale 2024*



**ES LX200** 3/4 SM  
LCDR FAVOR 149F X GW PREDESTINED 701T

**ES K38** 5/8 SM  
CLRS HOMELAND 327 H X TJ MAIN EVENT 503B  
BRED TO CLRS JERICHO 3369



**ES K146** 5/8 SM  
GW MAJOR MOVE 590E X CDI AUTHORITY 77X  
BRED TO KBHR HONOR H060



**ES LG7**  
PB SM  
KRJ DAKOTA OUTLAW  
G974 X  
CCR BOULDER 1339A



**ES LH129-3** 3/4 SM  
CLRS HOMELAND 327H X  
WS PROCLAMATION E202



**ES LE35** 3/4 SM  
LCDR PROGRESSIVE 106G X  
TJ MAIN EVENT 503B



**ES K62**  
PB SM  
W/C FORT KNOX  
609F X WS PRIME  
TIME B6  
BRED TO  
CLRS JERICHO 336J



**ES K26** PB SM  
OMF EPIC E27 X W/C FORT KNOX 609F  
BRED TO HOOK'S GALILEO 210G

**130+ BULLS &  
50 PAIRS & BRED FEMALES**

SIMMENTAL & SIMANGUS™, SIM/RED ANGUS,  
ANGUS & RED ANGUS – **SELLING 180 HEAD!**



Guest Breeder:  
**JK ANGUS 605-940-5104**

Sale Managers: Eberspacher Enterprises 507-532-6694  
Val Cell 612-805-7405 • sales@ebersale.com  
Catalog will be online at [www.ebersale.com](http://www.ebersale.com)



**EICHACKER  
SIMMENTALS**

Steve & Cathy Eichacker  
Home 605-425-2391  
Cell 605-421-1152  
Adam Eichacker 605-421-0554  
Salem, SD

*The genetics worth waiting for!*



# Thursday, March 7, 2024

1:00 p.m., At the Ranch, Mandan, ND

## SELLING 200 HEAD

120 High-Performance Red & Black Simmental & SimAngus™ Bulls  
and 80 Red & Black Simmental & SimAngus™ Heifers



**KBHR L025** - Reg# (4225701) - PB SM - Homo Polled  
WS JAM-PACKED 88J x KBHR J116 MS RED VELOUR  
CE 15.5 BW -3.4 WW 74.1 YW 110.2 MCE 9.3  
M 23.3 MWW 60.2 **API 182.1 TI 96.3**



**KBHR L033** - Reg# (4225709) - PB SM - Homo Black - Homo Polled  
GIBBS 9114G ESSENTIAL x WS MISS SUGAR C4  
CE 18.9 BW -3.4 WW 95.1 YW 158.5 MCE 11.0  
M 27.9 MWW 75.4 **API 195.5 TI 109.3**



**KBHR L086** - Reg# (4225762) - PB SM - Homo Black - Homo Polled  
LBRS GENESIS G69 x BAR CK MS X38 106Z  
CE 14.7 BW -1.3 WW 81.0 YW 119.9 MCE 9.8  
M 24.9 MWW 65.3 **API 196.6 TI 104.2**



**KBHR L100** - Reg# (4225776) - 3/4 SM - Homo Black - Homo Polled  
REDHILL 672X X004 231A x WS MISS SUGAR C4  
CE 15.3 BW 0.4 WW 93.8 YW 151.6 MCE 9.5  
M 17.3 MWW 64.1 **API 178.2 TI 101.5**



**KBHR L108** - Reg# (4225784) - PB SM - Homo Black - Homo Polled  
KBHR HONOR H060 x KBHR DEBUTANTE H113  
CE 18.2 BW -2.9 WW 83.8 YW 135.9 MCE 11.3  
M 27.9 MWW 69.8 **API 199.7 TI 105.7**



**KBHR L157** - Reg# (4225833) - PB SM - Homo Polled  
KBHR ALL AMERICAN G104 x WS ELECTRA E88  
CE 15.8 BW -1.0 WW 89.4 YW 135.5 MCE 10.3  
M 25.8 MWW 70.4 **API 168.7 TI 101.4**

Dwight, Susan & Jake Keller — Luke & Katy Keller — Tessa & Thomas Osterbauer

701-471-5215 Dwight • 701-471-1142 Luke • 701-471-5065 Jake • 701-445-7350 Home

1573 55th St., Mandan, ND 58554 • kbhr@westriv.com • www.kbhrsimental.com

EPDs as of 1/8/24





**KBHR L022** - Reg# (4225698)

3/4 SM - Homo Black - Homo Polled  
REDHILL 672X X004 231A x WS MISS SUGAR C4  
CE 12.8 BW 0.0 WW 101.7 YW 168.5 MCE 7.9  
M 17.3 MWW 68.0 **API 174.2 TI 104.5**



**KBHR L046** - Reg# (4225722)

PB SM - Homo Black - Homo Polled  
LBRS GENESIS G69 x BAR CK MS X38 106Z  
CE 16.9 BW -1.7 WW 78.1 YW 113.6 MCE 11.5  
M 24.9 MWW 63.8 **API 200.0 TI 102.7**



**KBHR L105** - Reg# (4225781)

PB SM - Homo Black - Homo Polled  
KBHR HONOR H060 x BAR CK MS X38 106Z  
CE 16.9 BW -1.3 WW 76.7 YW 118.6 MCE 11.9  
M 25.9 MWW 64.2 **API 185.0 TI 99.2**



**KBHR L107** - Reg# (4225783)

PB SM - Homo Polled  
WS JAM-PACKED 88J x KBHR J011 MS FREYA  
CE 13.6 BW -1.3 WW 86.1 YW 130.3 MCE 8.4  
M 24.7 MWW 67.7 **API 169.6 TI 97.7**



**KBHR L166** - Reg# (4225842)

PB SM - Homo Polled  
KBHR ALL AMERICAN G104 x WS ELECTRA E88  
CE 14.1 BW 0.8 WW 99.1 YW 148.1 MCE 9.3  
M 25.8 MWW 75.2 **API 155.6 TI 100.0**



**KBHR L175** - Reg# (4225851)

PB SM - Homo Black - Homo Polled  
LBRS GENESIS G69 x BAR CK MS X38 106Z  
CE 12.4 BW 0.8 WW 89.1 YW 144.8 MCE 8.6  
M 24.9 MWW 69.4 **API 188.5 TI 105.6**



**KBHR L176** - Reg# (4225852)

PB SM - Homo Polled  
MR SR RED OCTOBER G1761 x KBHR H074 MS ALL ABOARD  
CE 18.7 BW -1.9 WW 88.9 YW 139.3 MCE 10.1  
M 19.9 MWW 64.3 **API 176.9 TI 103.3**



**KBHR L187** - Reg# (4225863)

PB SM - Homo Polled  
KBHR ALL AMERICAN G104 x WS ELECTRA E88  
CE 12.7 BW 2.1 WW 103.4 YW 160.0 MCE 8.3  
M 25.8 MWW 77.4 **API 164.5 TI 106.0**



**KBHR L202** - Reg# (4225878)

1/2 SM - Homo Polled  
BIEBER CL STOCKMARKET E119 x KBHR F245  
CE 16.9 BW -2.4 WW 86.7 YW 137.5 MCE 10.8  
M 24.0 MWW 67.3 **API 167.0 TI 103.2**



**KBHR L212** - Reg# (4225888)

PB SM - Hetero Black - Homo Polled  
FIVE STAR JACKSON J10 x WS ELECTRA E88  
CE 19.4 BW -5.2 WW 73.5 YW 109.6 MCE 11.7  
M 28.3 MWW 64.9 **API 190.1 TI 100.7**



**KBHR L214** - Reg# (4225890)

PB SM - Homo Black - Homo Polled  
KBHR HARTLAND H100 x WS MISS SUGAR C4  
CE 16.1 BW -2.6 WW 91.7 YW 139.2 MCE 9.6  
M 28.7 MWW 74.5 **API 173.8 TI 103.5**



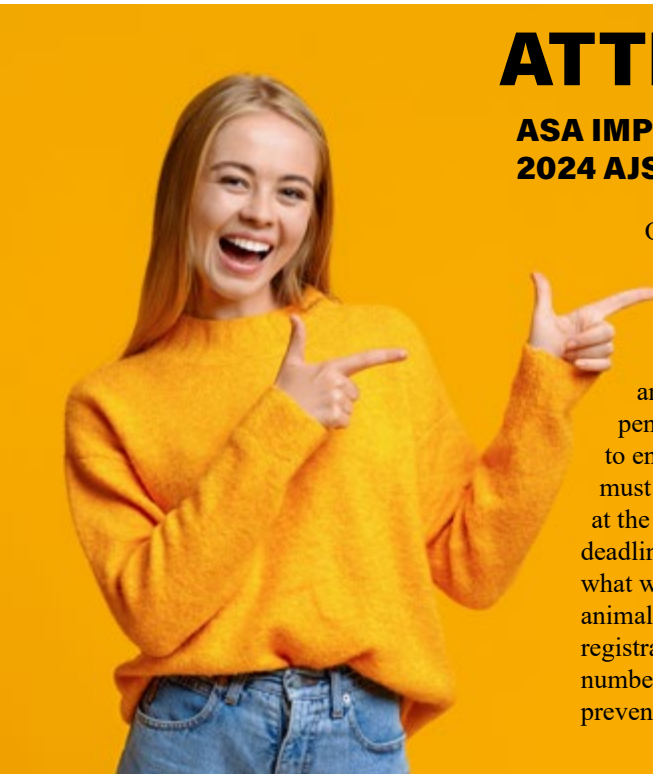
**KBHR L279** - Reg# (4225955)

PB SM - Homo Polled  
FIVE STAR JACKSON J10 x KBHR RED VELVET F055  
CE 15.1 BW -0.4 WW 94.8 YW 143.3 MCE 10.4  
M 29.4 MWW 76.7 **API 169.1 TI 106.7**

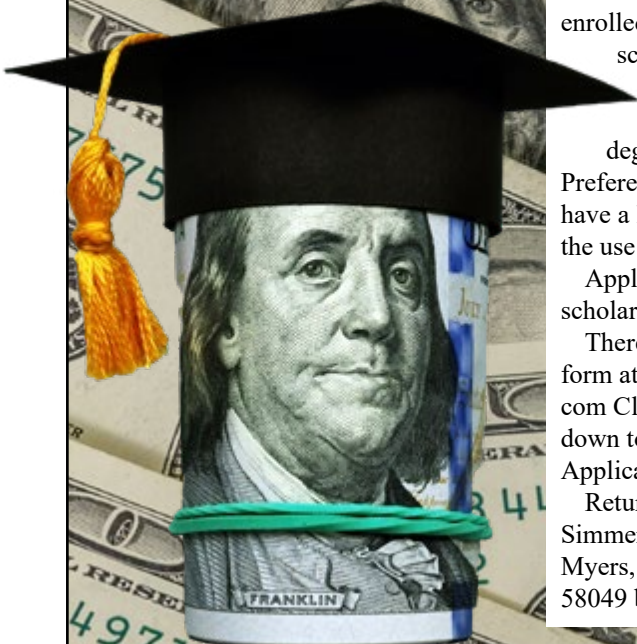
# ATTENTION, JUNIORS:

## ASA IMPLEMENTS DNA RULE CHANGE FOR 2024 AJSA CLASSICS

On January 2, 2024, the ASA Board of Trustees passed a rule change pertaining to the 2024 AJSA National and Regional Classics and beyond. Beginning in 2024, animals with registrations pending DNA will not be allowed to enter the Classics. Every animal must have a valid registration number at the time of the AJSA Classics deadlines. This is a change from what was previously accepted, where animals could be entered with pseudo registration numbers (registration numbers in parentheses) if DNA work preventing registration was pending.



## Dollars for Simmental Scholars



### ND SIMMENTAL ASSOC. OFFERS \$500 SCHOLARSHIP

North Dakota Simmental Association Scholarship Application The North Dakota Simmental Association will award one \$500 scholarship to a 2024 high school graduate or currently enrolled full-time in college. Applicants must be enrolled in a two or four-year post high school educational program in the Fall of 2024. Furthermore, applicants must be pursuing a degree in an agricultural program. Preference will be given to applicants that have a livestock background that includes the use of Simmental genetics.

Applicants may apply for each of the scholarships.

There is a fillable online application form at [www.northdakotasimmental.com](http://www.northdakotasimmental.com) Click on the NDJSA tab and scroll down to the ND Simmental Scholarship Application.

Return application to North Dakota Simmental Association, Attention Kim Myers, 12066 57th St SE, Kathryn, ND 58049 by March 15, 2024.

### ND SIMMENTAL SCENE SCHOLARSHIP APPLICATION

The ND Simmental Association board will award one \$1,000 scholarship to a 2024 high school graduate or any individual that will be a full-time college student in the fall of 2024.

Applicants must be enrolled in a two or four – year post high school educational program in the Fall of 2024. Furthermore, applicants must be pursuing a degree in an agricultural program. Preference will be given to applicants that have a livestock background that includes the use of Simmental genetics.

There is a fillable online application form at [www.northdakotasimmental.com](http://www.northdakotasimmental.com) Click on the NDJSA tab and scroll down to the ND Simmental Scene Scholarship Application.

Return application to North Dakota Simmental Association, Attention Kim Myers, 12066 57th St SE, Kathryn, ND 58049 by March 15, 2024.

# TSN SIMMENTALS

## Annual Bull Sale

FEBRUARY 27  
 PLATTE, SD  
**1 PM** Platte  
 Livestock  
 Market



**L118**

CE	YW	STAY	MARB	RE	SAPI	STI
17.4	126.9	16.4	0.78	0.99	173.5	97.1

ASA 4270634 - 3/4 SM 1/4 AN - KBHR HONOR H060 SON



**L012**

CE	YW	STAY	MARB	RE	SAPI	STI
13.4	131.8	14.1	0.76	0.83	159.7	96.5

ASA 4270581 - 5/8 SM 3/8 AN - TSN ARCHITECT J618 SON



**L132**

CE	YW	STAY	MARB	RE	SAPI	STI
16.3	120.6	15.4	0.68	0.74	171.2	97.8

ASA 4270647 - PB SM - FP/L JURISDICTION 103J SON



**L108**

CE	YW	STAY	MARB	RE	SAPI	STI
6.0	155.2	19.7	0.63	1.05	168.3	105.5

ASA 4270624 - PB SM - CLRS GUARDIAN 317G SON



**L925**

CE	YW	STAY	MARB	RE	SAPI	STI
10.1	158.0	15.4	0.41	1.23	154.5	101.6

ASA 4270903 - PB SM - HOOK `S EAGLE 6E SON



**L412**

CE	YW	STAY	MARB	RE	SAPI	STI
13.2	133.9	20.3	0.56	1.13	174.0	100.6

ASA 4270723 - PB SM - LBRS GENESIS G69 SON

**65** Simmental AND  
 SimAngus™ Bulls

TSNSIMMENTALS.COM

**TSN SIMMENTALS**  
 Tim and Sandy Naasz PLATTE, SD  
 c. 605-207-0229 h. 605-337-3503

**DVAuction**  
 Broadcasting Real-Time Auctions

alliedgeneticresources.com

Marty Ropp 406-581-7835  
 Corey Wilkins 256-590-2487  
 Jared Murnin 406-321-1542

**ALLIED**  
 GENETIC RESOURCES

# STAND STRONG SIMMENTAL

## LOCAL SIMMENTAL BREEDERS FEATURED IN NATIONAL SERIES

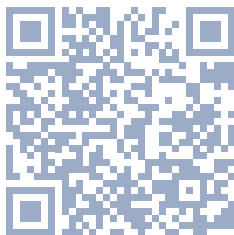
The Stand Strong Simmental series recently featured two area Simmental breeders. The Wulf family of Minnesota and the Eichacker family of SD were featured. The Youtube series began back in the fall of 2020 and has produced about 30 episodes featuring Simmental breeders throughout the United States. These short videos focus on cattlemen and women sharing, in their own words, the merits of raising Simmental and Simmental-influenced cattle in any environment to maintain a profitable herd. These are available to watch on the American Simmental Association Youtube channel. You can subscribe to their channel to stay updated on all the videos produced by the association.

Steve and Cathy Eichacker, their children and extended family work to raise great cattle in the eastern South Dakota landscape. The family first settled in the area in the early 1900s, and, after experimenting with different breeds, stayed with Simmental. Learn why in this Stand Strong Simmental segment.

The Wulf family and partners rely on Simmental genetics in their Bred for Balance program, amid the rolling prairie of Minnesota's Glacial Ridge. Visit [www.simmental.org](http://www.simmental.org) for more.

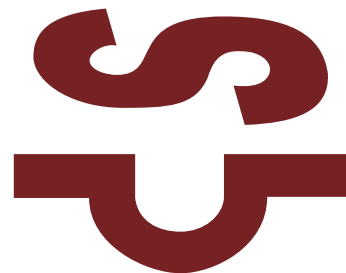


*Use your smart phone's camera app to scan this QR code and watch the Stand Strong Series as well as other American Simmental Association videos on YouTube.*





# GENERATIONS OF POWERFUL, DEPENDABLE PERFORMANCE!



## ANNUAL PRIVATE TREATY BULL SALE - MARCH 4<sup>TH</sup>

CONTACT US TODAY TO LEARN ABOUT THE OFFERING OR REQUEST A CATALOG  
PREVIEW OF SALE BULLS ON OUR WEBSITE NOW

### S/M LINEBACKER L572



ASA# 4211596 ▪ Polled  
Son of Kingpin ▪ Sells March 4th

### KUNTZ KINGPIN 2H



ASA# 3968312 ▪ Polled/S ▪ Semen Available

	CE	WW	YW	ADG	MCE	MWW	CW	API	TI
EPDs	10.5	89.2	133.0	.27	4.0	84.7	40.9	129.0	80.3
%	10	1	1	2	35	2	1	1	1

PLEASE SEE OUR WEBSITE OR CALL/TEXT FOR MORE INFORMATION

[www.smfleckvieh.com](http://www.smfleckvieh.com)



S/M FLECKVIEH CATTLE  
Jeff Sorenson | 605-359-8728 (c)  
Garretson, South Dakota  
sorenson@augie.edu

# Ashworth

Farm & Ranch Ltd.

## 21<sup>st</sup> ANNUAL BULL SALE

**MONDAY MARCH 4<sup>th</sup>**  
1:00 PM CST, AT THE FARM, OUNGRE SK

*Bulls Sired By*

- Statement
- Overload
- International
- Alpha
- Element
- 109J
- Italian
- Estate
- 007
- Slider
- Black Market
- Northstate
- Right to Love
- Venture

...and more



**KWA 49L**  
*Estate Son*

CE 2.2 BW 6.9 WW 103.4 YW 155.7 Milk 16.5 MCE 1.3 MWWT 68.2 API 101.77 TI 79.41



**KWA 154L**  
*Royal Son*

CE 10.8 BW 1.2 WW 76.1 YW 112.3 Milk 27.3 MCE 5.2 MWWT 65.4 API 126.10 TI 75.41



**KWA 78L**  
*Black Market Son*

CE 9.4 BW 2.3 WW 77.5 YW 116.7 Milk 24.9 MCE 3.7 MWWT 63.7 API 116.09 TI 72.76



## The Ashworths

PO Box 53  
OUNGRE, SASKATCHEWAN, CANADA  
SoCiZo

KELLY 306 861-2013  
KYLE 306 861-9352

EMAIL: ASHWORTHFARMANDRANCH@GMAIL.COM

FACEBOOK: @ASHWORTHFARMANDRANCH

Direct Livestock Marketing Systems  
**DLMS**  
www.dlms.ca

WATCH LIVE & BID ONLINE  
VIEW VIDEOS OF BULLS  
WWW.CATTEVIDS.CA

*On Offer:*  
**100+** YEARLING &  
SELECT 2 YR OLD RED & BLACK  
SIMMENTAL & PERCENTAGE BULLS



# NORTHWEST NORTH DAKOTA SELECT SIMMENTAL



*Females like this sell!*



*Saturday*

**MARCH 9, 2024**

1.P.M. • MOUNTRAIL CO. FAIR  
BUILDING, STANLEY, N.D.  
COMPLEMENTARY LUNCH AT 11 A.M.

*featuring*

**SIMMENTAL** &  
**SIMANGUS™**

15 POWERFUL REGISTERED BULLS

65 REGISTERED & COMMERCIAL  
BRED & OPEN FEMALES



*Attention*  
**JUNIORS!**

OPEN HEIFERS PURCHASED IN  
THIS SALE QUALIFY TO SHOW AT THE  
**NW SELECT JUNIOR FUTURITY,**  
WHICH HAS A SIZEABLE *jackpot!*

*Contact us for more info!*

**BOB GRANT (701) 340-8082**

**GARY SYS (701) 509-1154**



# FOR YOUR LISTENING PLEASURE ON BULL DELIVERY TRIPS...

By Tamra Heins, editor

There are literally thousands of podcasts to listen to on nearly every topic imaginable. Highlighted in the last two issues were podcasts that were specific to cattle and while researching these two, there were many, many more. I researched many different sites, including hosting platforms and there are a few cattle podcasts that seemed to keep ranking towards the top.

Feedspot is an online directory of podcasts that lists over 100,000 different podcasts in 1500 different niches. They rank podcasts with an algorithm that includes social media followers, traffic, timeliness and a host of other metrics. Their top beef podcast was Beltway Beef.

## BELTWAY BEEF

Beltway Beef is a podcast produced by the National Cattlemen's Beef Association's policy division in Washington, D.C. If you like to keep up to date on ag policy this podcast is typically less than 15 minutes and they produce one episode per week. With over 123,000 followers on Facebook and another 50,000 on X and Instagram they prove to have a large audience.

Extension has used the podcast format to deliver information to cattle producers. Newsworthy items you would find in a typical extension newsletter are now being delivered in a podcast to producers in the form of a podcast.

Two very popular podcasts were created by Kansas State University and the University of Nebraska.

## CATTLE CHAT

Cattle Chat is a producer-focused podcast that covers hot topics currently taking place in the beef cattle industry. The show features group discussions, guest speakers, and research-based information from veterinary experts. This podcast is produced by the Beef Cattle Institute at Kansas State on a weekly basis. They are

usually less than a half hour long and they discuss timely issues in more depth.

## BEEFWATCH

The BeefWatch Podcast is an audio companion to the UNL BeefWatch newsletter produced by the University of Nebraska-Lincoln extension team. The information is geared to helping beef cattle producers improve the sustainability and profitability of their operations. At the BeefWatch website, it even has a short YouTube video that goes through the process of subscribing to their podcast on an iPhone or an Android phone.

South Dakota and North Dakota State also have podcasts created to give subscribers access to information and discussion about a variety of topics.

## CATTLE HQ

Cattle HQ was launched by the SDSU Extension cow/calf field specialists in the Fall of 2021. This podcast is produced two times per month and covers everything from direct marketing to how to retain employees.

Robin Salverson, SDSU Extension Specialist says podcasts are popular for people of all ages, and are particularly well-suited for people always on the move – like a farmer or rancher working long hours in a pickup, truck or tractor. Salverson, who is based in Lemmon, said the team also wanted to have another way to connect with producers and share cutting edge research.

## AGRICULTURE APPLIED

At NDSU the podcast titled Agriculture Applied also works as a communication medium to help connect farmers and

ranchers with industry experts. Extension agent, Hannah Nordby discusses a wide variety of topics like her latest episode on rainfall insurance to an episode that discusses how to incorporate sheep into your grazing plan.

## WAR AGAINST WEEDS

One of the longest running and most popular podcasts at NDSU is called War Against Weeds and is hosted by the NDSU Weed Extension Specialist Team. This podcast has been going on for seven seasons and is published weekly.

## CATTLE CALL

One podcast, I ran across is titled, Cattle Call. The Cattle Call is hosted by Curtis Ohlde and his episodes tell the story of America's Pioneers in the Beef Cattle Industry both past and current. He has focused on both commercial and seedstock producers in an effort to capture these ranches stories to share with others and document their history in our industry. There are only 24 episodes so far but each one offers a unique story.

If you are new to podcasts, here is a just a tiny, tiny sample to get you started. Some of these you may like and some you won't. Your interests will be picked up by the algorithm of the hosting sites and they will keep suggesting new ones to you. I have a feeling you will find a favorite or many favorites along the way.

Podcasts are a great way to pass the time on bull delivery trips with limited radio service or in the tractor when you have heard the same radio playlist for the fourth time.

I hope this helps you find one or many that you enjoy.





# BULL SALE

HIAWATHA, KANSAS

**DMCC**

DIAMOND M CATTLE COMPANY



LiveOnline™

**March 13, 2024**

*View Online & bid live!*

MARK MUELLER 785 547 6054 • [WWW.DIAMONDMCATTLE.COM](http://WWW.DIAMONDMCATTLE.COM)  • MATT MUELLER 785 547 5505

# MANAGING COW BODY CONDITION IS CRITICAL FOR PROFITABILITY

## BODY CONDITION OF COWS DURING CALVING IMPACTS OPEN RATES IN THE UPCOMING BREEDING SEASON.

In the cow-calf production system, reproductive efficiency is the No. 1 driver of profitability. “That’s how this business works,” says James Rogers, North Dakota State University Extension forage crops production specialist. “We market the offspring from our herds. No offspring, no profit.”

Rogers references a measure of reproductive performance used in the swine industry called “non-productive days,” or days that a gilt or sow is neither gestating or lactating. Each non-productive day comes at a cost and serves as a benchmark measure of reproductive and economic performance in a swine herd.

“A sow has a huge reproductive advantage over a beef cow, as a sow will have two or slightly over two litters per year with multiple piglets,” Rogers says. “A beef cow should have zero non-productive days. Each day of the year, she should be lactating, gestating or preparing to re-breed. A beef cow gets one day a year to calve and only 80 days from calving to re-breed in order to stay within a 365-day calving interval. Cows with longer calving intervals cost more to maintain and produce less weaned calf than earlier calving cows.”

Rogers adds that a 100% pregnancy and calving rate is not realistic, but ranchers should expect an open rate of around 8% in mature cows and 12% in heifers. Numbers higher than benchmark averages indicate that there may be an underlying cause. Reports across North Dakota indicate a wide range in open rates from the benchmark averages to as high as 30%.

According to Rogers, the single most important factor in keeping a cow at zero non-productive days is body condition, the amount of fat cover a cow is carrying through the various stages of the production cycle. Body condition has a direct impact on calving interval, conception rate and percentage of open cows. To access body condition, ranchers and researchers use a scoring scale of 1 (emaciated) to 9 (very obese).

Research has shown that cows that calve at a body condition score of 5 to 6 will return to estrus in 50 to 60 days. A cow calving at a body condition score of 4 will take 70 days. With only 80 days available from calving to rebreeding to stay on a 365-day calving cycle, this does not allow much time. For spring calving herds, Rogers recommends ranchers take body condition scores now while there is still time to economically add condition prior to calving if needed.

“Realize that it takes around 100 pounds of weight gain to change 1 unit on the body condition scale,” says Karl Hoppe, NDSU Extension livestock systems specialist. “If a cow requires such a gain, consider whether you have quality feed supplies on hand to accomplish it. A forage test can help you know what you are working with. Forage tests cost about \$20 per sample. An open cow could cost you about \$1,200 in lost calf revenue plus cow maintenance costs for a year. The return on investment for a forage test is hard to beat.”

It’s slow progress to change the body condition score of a cow. When balancing a ration for a one pound per day gain, it will



*That’s one fat cat! Researcher explains bovine body condition scores using cat analogy.*

take three months to increase one body condition score, Hoppe says. Extreme cold weather can decrease one body condition score quickly if the ration is not changed to include more energy. Prolonged winters like 2022-2023 can reduce body condition score without the owner recognizing the change.

Describing how a body condition score of 5 to 6 should look can be difficult because one person’s 5 is another’s 6. Online images of cows in the various body condition scores can be a guide, and NDSU Extension livestock specialists and county agents are available to help determine body condition score in cowherds. Consistency in scoring is important when evaluating the herd.

Rogers uses an analogy to help others to visualize the body condition scale based on the condition of a cat.

- If the cat is round, with no defined shape or waistline, and you can’t feel the ribs, then this cat probably has a body condition score of 7 to 9 (on the fat side).
- If you can see the cat’s waist and feel its ribs, but it has a covering of fat down the back with some cover over the ribcage, it is a 5 to 6 (considered ideal).
- If ribs and hip bones are clearly visible on your cat, and there is a lack of cover down the back and ribs, this cat is a 1-4 and needs to gain weight. The same is true for cows.

“When open cow numbers are higher than average, many ranchers assume something happened during the breeding season, and it probably did,” Rogers says. “Cows may not have been cycling or cycled late. The cause may have occurred before the breeding season with less than adequate cow body condition in late gestation and calving. Assess cowherd body condition now to minimize open cows in the fall.”

In addition to body condition score, NDSU Extension specialists recommend ranchers consider other parts of the production system this winter. Some questions to consider are:

- Is the stocking rate for the cowherd adequate for the amount of range and pasture biomass produced?
- Do the genetics of the cowherd match ranch resources?
- Are production records in place to track calving interval?
- What is the marketing plan for open cows?

Giving these matters attention now keeps the cowherd in optimal condition year-round, Rogers says.

# Doll Simmental Ranch

Raising Simmental since 1968, Charolais since 1958. We would like to thank our new and returning customers.



**DCR Mr Landslide L043 ASA# 4276278**

BD: 2/6/23  
 Red • Homo Polled  
 Adj. 205 WT: 804 lbs. • WWR: 102  
 Adj. 365 WT: 1,436 lbs. • YW Ratio: 106  
 Sire: DCR Mr Hard Impact H69 • Dam: DCR Ms Imperial J32

BW	WW	YW	Milk
-7	89	140	24
MWW	\$API	\$TI	
69	161	94	



**DCR Mr Lamont L119 ASA# 4276265**

BD: 2/15/23  
 Red • Homo Polled  
 Adj. 205 WT: 797 lbs. • WWR: 101  
 Adj. 365 WT: 1,389 lbs. • YW Ratio: 103  
 Sire: GW Hilger One 454H • Dam: DCR Ms U302 Red Deputy J160 ET

BW	WW	YW	Milk
1.4	87	133	27
MWW	\$API	\$TI	
70	147	85	



**DCR Mr Lieutenant L137 ASA# 4276258**

BD: 2/17/23  
 Red • Homo Polled  
 Adj. 205 WT 919 lbs. • WWR: 116  
 Adj. 365 WT: 1,439 lbs. • YW Ratio: 108  
 Sire: KS Vanderbilt G220 • Dam: DCR Miss Radical H115

BW	WW	YW	Milk
3.5	103	156	27
MWW	\$API	\$TI	
78	140	93	



**DCR Mr Landrover L128 ASA# 4276264**

BD: 2/16/23  
 Red • Homo Polled  
 Adj. 205 WT: 873 lbs. • WWR: 111  
 Adj. 365 WT: 1,482 lbs. • YW Ratio: 111  
 Sire: KS Vanderbilt G220 • Dam: DCR Miss All-Aboard H120

BW	WW	YW	Milk
2.2	99	148	26
MWW	\$API	\$TI	
75	131	91	



**DCR Mr Lock-Down L307 ASA# 4276221**

BD: 3/9/23  
 Hetero Black • Homo Polled  
 Adj. 205 WT: 815 lbs. • WWR: 103  
 Adj. 365 WT: 1,458 lbs. • YW Ratio: 109  
 Sire: LBRS Genesis G69 • Dam: DCR Ms Everglad G130

BW	WW	YW	Milk
4.8	110	174	29
MWW	\$API	\$TI	
84	153	102	



**DCR Mr Landlord L174 ASA# 4276250**

BD: 2/22/23  
 Homo Black • Homo Polled  
 Adj. 205 WT: 905 lbs. • WWR: 115  
 Adj. 365 WT: 1,563 lbs. • YW Ratio: 117  
 Sire: BC1 Structure J111 • Dam: DCR Miss Denali H409

BW	WW	YW	Milk
4.7	107	166	30
MWW	\$API	\$TI	
84	151	98	



**DCR Mr Landmark ET L076 ASA# 4276273**

BD: 2/11/23  
 Homo Black • Homo Polled  
 Adj. 205 WT: 853 lbs. • WWR: ET  
 Adj. 365 WT: 1,481 lbs. • YW Ratio: n/a  
 Sire: DCR Mr Exclusive E28 • Dam: DCR Ms Top Grade C238

BW	WW	YW	Milk
3.5	94	147	30
MWW	\$321	\$TI	
77	130	86	



**DCR Mr Lineman ET L084 ASA# 4276272**

BD: 2/12/23  
 Homo Black • Hetero Polled  
 Adj. 205 WT: 838 lbs. • WWR: ET  
 Adj. 365 WT: 1,530 lbs. • YW Ratio: n/a  
 Sire: DCR Mr Exclusive E28 • Dam: DCR Ms Top Grade C238

BW	WW	Y3	Milk
4.4	92	152	32
MWW	\$API	\$TI	
78	122	81	

44th Annual  
 Production Sale  
**Tuesday,  
 March 5, 2024**

**1:30 p.m. CST**  
 Kist Livestock, Mandan, ND

*Selling Top-Genetics  
 for Both Breeds!*

**65 Simmentals  
 95 Charolais  
 4 Open Females  
 from both breeds**

*Other Sires:*

IR Imperial D948  
 RFS Force F35  
 Bridle Bit Resource G9117  
 DCR Mr Finnigan F446  
 DKSR Mr Batman H290  
 CRS Walker 61G  
 DCR Mr Benchmark F113  
 DCR Mr Gizzmo Red G380  
 DCR Mr Hang Over H238  
 WS Proclamation E202

# Doll Simmental Ranch

3991 36th St.  
 New Salem, ND 58563

Charles & Pamela Doll  
 701-843-8673

dollboyz@westriv.com

Harlan & Jodie Doll  
 701-843-8771

David & Donna Doll  
 701-843-7947

dollfarm@westriv.com

[www.dollfarms.com](http://www.dollfarms.com)



# 50

Coming Two Year Old  
Simmental, Angus  
& Simm-Angus Bulls

**New Sale Date!**  
**WEDNESDAY, FEBRUARY 21, 2024**



Miles & Bonnie Glasman  
Jared & Chelsey Glasman  
Russell, Manitoba  
Home: 204.773.3279  
Miles' Cell: 204.773.6275  
Jared's Cell: 204.796.0999  
mjsimmentalangus@gmail.com

FIND US ON     
Sale Managed By:  
T Bar C Cattle Co. Ltd.  
Chris: 306-220-5006

Matthew & Leanne Glasman  
Russell, Manitoba  
Home: 204.773.3209  
Matt's Cell: 204.773.6055  
mlg@glasmanfarms.com





# CDI DIAMOND

## S I M M E N T A L S

2.28.24 C◊ RANCH 1PM CST DAWSON ND



CDI 95L Homo Polled PB SM  
CDI Abundance 391C x CDI Ms Trustee 49J

CE	BW	WW	YW	MCE	MM	MARB	REA
5	2.6	87	135	2	33	0.32	1.46
—		ASA# 4279766		API 132		TI 89	



CDI 137L Homo Polled Homo Blk PB SM  
CDI Jericho 291J x CDI MS Legendary 1F

CE	BW	WW	YW	MCE	MM	MARB	REA
7	3.1	95	146	4	32	0.57	0.79
—		ASA# 4279833		API 161		TI 98	



CDI 32L Homo Polled PB SM  
CDI Abundance x CDI Ms Trustee 40J

CE	BW	WW	YW	MCE	MM	MARB	REA
8	6.2	103	168	3	33	0.36	1.46
—		ASA# 4279652		API 142		TI 97	



CDI 34L Homo Polled Homo Blk PB SM  
CDI Jericho 291J x CDI Miss Taylormade 75C

CE	BW	WW	YW	MCE	MM	MARB	REA
4	5	94	153	3	31	0.55	1.15
—		ASA# 4279656		API 162		TI 96	



CDI 65L Homo Polled PB SM  
CDI Abundance 391C x CDI Ms Trustee 49J

CE	BW	WW	YW	MCE	MM	MARB	REA
9	2	78	121	5.3	33	0.50	1.18
—		ASA# 4279718		API 153		TI 90	



CDI 126L Homo Polled Homo Blk PB SM  
CDI Rush 261H x CDI Ms Impact 28H

CE	BW	WW	YW	MCE	MM	MARB	REA
2	6.2	112	182	-0.3	29	0.50	1.18
—		ASA# 4279810		API 138		TI 102	



CDI 86L Homo Polled PB SM  
CDI Abundance 391C x CDI Ms Trustee 49J  
ASA# 4279756



CDI 130L Homo Polled Homo Blk PB SM  
LCDR Affirmed 212H x CDI Ms Trustee 85H  
ASA# 4279816



CDI 49L Homo Polled PB SM  
Rockin H Captivate J75 x CDI Ms Trustee 40J  
ASA# 4279687

Neil Nicholson Family  
701.391.6205

cdiamond@bektel.com  
C Diamond Simmentals

Wesley & Kelsey  
701.391.2838

4720 34th Ave SE Dawson ND 58428

This sale will be broadcast live on the internet.  
**DVAuction**  
Broadcasting World's Finest Auctions  
Real time bidding & proxy bidding available.



## STRENGTHENING LOCAL PROCESSING ACT ADDRESSES LOCAL FOOD SUPPLY CHAIN ISSUES

A comprehensive bill designed to address livestock supply chain issues and support small and mid-size meat processors has been introduced as federal legislation. The Strengthening Local Processing Act provides small plants with the funds needed to grow and expand, and supports a scale-appropriate approach to small scale slaughter and processing.

Introduced by representatives from Maine and Nebraska, the bill contains the following sections:

- Establishment of a searchable database to help small and very small plants find models and receive guidance on HACCP (Hazard Analysis and Critical Control Points) plans necessary for certification.
- Expanding state inspection by increasing the share of program costs paid by USDA to states.
- Expanding the Cooperative Interstate Shipment (CIS) program by increasing USDA cost share and moving eligibility to be recognized as a small plant from 25 to 50 employees.
- Training, Education & Technical Assistance Grants will be available for small plants, universities and technical colleges to train a variety of workers from operators to butchers. Grants will also be available for other costs associated with expanding or establishing a small plant, and for coping with pandemic situations. The bill has been endorsed by

organizations such as the American Association of Meat Processors, National Farmers Union, US Cattleman's Association and other species-specific groups.

So, if the bill passes, what are some benefits to South Dakota meat producers and consumers?

According to Cindy Tolle, owner of Sturgis Meats in Sturgis, SD, "I think it's a great idea. It should help get more processing going, and really help producers. It would take some strain off of my plant, which is way too busy. We turn away about 30 producers a day who can't wait for an appointment months into the future."

These quotes come from the National Sustainable Agriculture Coalition:

Kevin Barnhill, owner of the Blair Meat Market in Blair, Nebraska, offered: "The Strengthening Local Processing Act is a winning proposal. Business owners will appreciate the targeted assistance. Farmers will profit from increased market opportunities. Consumers will benefit most of all from access to fresh and local foods."

"It provides financial relief for required food safety activities, reducing the regulatory burden on small companies with limited resources," said Jim Wells, CEO of the North American Bison, LLC, in New Rockford, North Dakota. "This financial support for the colleges and universities would be used to develop

curriculum and programs in meats and meat processing, resulting in a more competent and resilient workforce for bison processors."

From a Community Vitality viewpoint, the ability to have a small meat processor locally is a win for economic development. The South Dakota Local Food Network held two statewide listening sessions in May, with one of the top concerns mentioned being access to meat and poultry processing facilities.

Liliya Stone, Wall Economic Development Director, says, "The owner of our small meat processing plant earned the trust of our producers and people in the community. The plant has been a big help to ranchers in the area needing to process their beef, as well as promoting local beef through the school and a local restaurant. The business boosts the economy of Wall year-round, and has led the Economic Development Board to take steps toward designating an industrial park."

The National Sustainable Agriculture Coalition states that small processors are excited to see a focus on scale-appropriate regulations, and support for education of the next generation of small-scale, niche meat processors. Here in South Dakota, there has long been a need for more small processors, both for livestock and poultry. Locker plants not only help producers enter the supply chain, but also provide additional economic vitality for communities.



Annual Production Sale:  
**FRIDAY FEB. 16, 2024**  
 Kist Livestock, Mandan, ND • 1 p.m.  
 125 Bulls • 60 Bred Heifers  
 Red • Black • Simmental • SimAngus™



**Lot 4**

Reg #: 4291087 • PB SM • Adj. 205: 761

CE	BW	WW	YW	MCE	Milk	MWW	Marb.	REA	API	TI
72	3.4	89.7	126.4	4	26.5	71.3	0.21	1.12	139.4	85.4



**Lot 50**

Reg #: 4291804 • 3/4 SM 1/4 AR • Adj. 205: 813

CE	BW	WW	YW	MCE	Milk	MWW	Marb.	REA	API	TI
15.2	-0.8	88.6	142.1	10	36.6	80.8	-0.02	0.74	119.8	82.1



**Lot 113**

Reg #: 4291755 • 1/2 SM 1/2 AN • Adj. 205: 809

CE	BW	WW	YW	MCE	Milk	MWW	Marb.	REA	API	TI
9.2	0.1	90.7	142.4	4.1	34.7	81.4	0.19	1.15	126.2	86.5



**Lot 16**

Reg #: 4291962 • PB SM • Adj. 205: 818

CE	BW	WW	YW	MCE	Milk	MWW	Marb.	REA	API	TI
13.6	-1	92.5	136.3	7.2	30.2	76.4	0.35	0.73	148.7	96.3



**Lot 88**

Reg #: 4291820 • 3/4 SM 1/4 AN • Adj. 205: 871

CE	BW	WW	YW	MCE	Milk	MWW	Marb.	REA	API	TI
12	3	99.1	145.9	5.3	28	77.5	0.35	1.32	144.5	91.7



**Lot 175**

Reg #: 4129986 • 3/4 SM 1/4 AN  
 Bred to: Hook's Full Figures

CE	BW	WW	YW	MCE	Milk	MWW	Marb.	REA	API	TI
8.1	3.2	76.1	122.3	3.4	27.5	65.7	0.15	0.67	114.6	71.7



Contact us to  
 be added to the  
 mailing list

Wade Staigle Family (701) 226-6464  
 Kevin Hansen Family (701) 720-6551  
 www.dakotapress.com • Breeds-leading Real Time Auctions



MARTIN-TRUDEAU INSURANCE

# LIVESTOCK DIVISION

★ Livestock insurance endorsed by the SD Angus Association, the SD Simmental Association and the SD Hereford Association ★

## LIVESTOCK INSURANCE

### [ ] **OPTION 1: All Risk Mortality (ARM)–100% Indemnity** *Bulls & Females*

Livestock Mortality Insurance is extended to indemnify the livestock owner for loss as a result of the death of an animal from natural causes, disease, accident or humane destruction to alleviate incurable and inhumane suffering resulting from a covered peril. Short term policies available: 30 day, 90 day, 6 months.

### [ ] **OPTION 2: ARM + Accidental External Injury (ACC)–80% Indemnity** *Bulls Only*

Mortality coverage plus coverage for injury causing Permanent Infertility (broken penis or stifle). *Requires a current Veterinary Certification (not over 30 days old).*

### [ ] **OPTION 3: ARM + Accident Sickness & Disease Infertility (ASD)–80% Indemnity** *Bulls Only*

Mortality Coverage plus coverage for injury causing Permanent Infertility (broken penis or stifle). In addition to coverage above, this also includes Total and Permanent Infertility (fever or infection causing infertility or disease). *Requires a current Breeding Soundness Evaluation (not over 30 days old).*

### [ ] **OPTION 4: ARM + Comprehensive Infertility (COMP)–85% Indemnity** *Bulls Only*

Covers all of the above, plus Frozen Testicles, Testicular Degeneration and infertility caused by abnormalities. Also pays 20% of insured value for temporary infertility of 21 days or more. This does not replace the Breeder's Guarantee. *Requires a current Breeding Soundness Evaluation (not over 30 days old).*

ALL OF THE ABOVE COVERAGES ARE SUBJECT TO APPLICABLE DEDUCTIBLES AND/OR COINSURANCE, MINUS SLAUGHTER VALUE.



Left to right: Colton Tobin, Katie Williams, Amy Puepke, Eric Audiss, Shelly Kutilek-Olson, Ray Trudeau, Randa Dean, Kristen Velez, Chris Nelson

# CROSSROAD FARMS

18th Annual  
**Bull & Female Sale**  
Wednesday, FEB 21, 2024  
at the farm, Shell Lake, SK Canada



**Crossroad Sanchez 69L**  
S: MRL Sysco DS: Crossroad Red Stetson



**Crossroad Black Hendrix 55L**  
S: Heavy Hitter DS: ACC1 Hustler



**Crossroad Nacho 85L**  
S: Wheatland Next Century DS: American Red



**Crossroad Latitude 123L**  
S: Crossroad Lieutenant DS: Anchor D Outlook



**Crossroad Slender Man 88L**  
S: MRL Sysco DS: Sibelle Spartacus



**Crossroad Joe Diffie 97L**  
S: Silver Lake Jose Cuervo DS: Sibelle Spartacus



**Crossroad Black Hot Shot 57L**  
S: Heavy Hitter DS: ACC1 Hustler



**Crossroad Voyager 91L**  
S: LFE Stratton DS: WLB Bounty Hunter

Jody & Jackie Woytiuk: 306.227.9910 | Gerald & Laurie Woytiuk: 306.427.4422 or 306.883.7272  
crossroadfarms@sasktel.net | www.crossroadfarms.ca | view catalogue on DLMS | videos on cattlevids.ca

# 83 South

## Simmental Bull Sale

**Online Sale DLMS Farm Gate Timed Auction**  
Starts March 8, 2024 • 12 p.m. CST  
Ends March 9, 2024 • 7 p.m. CST



### Open Houses

Saturday March 2, 2024 • Noon-5:30 p.m. CST  
Taylor's Auction Mart, Melita, MB, Canada

Friday March 8, 2024 • Noon-5:30 p.m.  
HeartLand Auction Mart, Virden, MB, Canada



**Downey 888K**  
Sire: MRL Legend



**BOF 20L**  
Sire: Bankroll



**MEM 312L**  
Sire: MR SR Highlife G1609



**CNF 18L**  
Sire: Wheatland Express Way 149J



**Sale Consultant: Craig Davidson • Black Sand Cattle Company • 204-761-5991**

**More Bros Simmentals**  
Everett More, Virden, Manitoba  
Phone (204)851-1737

**Bar O Simmentals**  
Cole Oliver Melita, Manitoba  
Phone (204) 264-0522

**Lone Star Simmentals**  
Nick Fletcher Melita, Manitoba  
Phone (204) 264-0431

**Downey Farms**  
Ryan Downey Coulter, Manitoba  
Phone (204) 649-2260

# 24<sup>TH</sup> ANNUAL BEST OF BOTH Worlds

*Tuesday*  
**FEBRUARY 27, 2024**  
GRENFELL, SASKATCHEWAN

**110+**  
BULLS TO SELL!

*Yearling & Two Year Olds*

- POLLED & HORNED FLECKVIEH •
- RED & BLACK PUREBRED SIMMENTAL •



**RLD 581K**  
RED WAVE X LAWMAKER



**RLD 10L**  
MOTOWN X WASHINGTON  
POLLED



**RLD 721K**  
LAWFUL X PUNCH OUT



**RLD 433L**  
CAPTAIN MORGAN X PROFIT



DOUBLE BAR D FARMS  
BOX 580, GRENFELL, SK S0G 2B0  
KEN DIMLER: 306.697.7204  
LOGAN DIMLER: 306.451.7229  
KENSHAU@YOURLINK.CA  
WWW.DOUBLEBARDFARMS.COM

Sale Managed By



T BAR C CATTLE CO. LTD.  
BOX 2330, WARMAN, SK S0K 4S0  
306.933.4200  
INFO@TBARC.COM



**D | L | M | S**  
www.dlms.ca

SALE ACCOMMODATIONS:  
LEGACY INN GRENFELL  
(639) 683-0107



# AM I FULL OF CRAP?

Calf scours are not inevitable. A strong prevention program is non-negotiable. Dependable scour prevention is essential for calf welfare, employee morale and business profitability. The immune system's response to vaccination is variable and unpredictable. That's why giving preformed antibodies instead of relying on a vaccine to stimulate antibody production is so important. I'm all for removing uncertainties. So yes, I stand by this product. (And no, I'm not.)

Learn more at  
**[FirstDefenseCalfHealth.com](http://FirstDefenseCalfHealth.com)**

***Marissa Hake, DVM***  
***Calf Vet***

© 2020 Immucell Corporation. All Rights Reserved.



**THE BEST VACCINE FOR SCOURS,  
ISN'T A VACCINE.**







# LaBatte Simmentals

44<sup>th</sup> Annual Bull & Female Sale

Friday, March 1, 2024 • 1 p.m.

Johnstone Auction Market, Moose Jaw, SK

Guest Consignor: East Poplar Simmentals

SELLING APPROXIMATELY: 80 RED, BLACK AND FULLBLOOD BULLS

PLUS 15 OPEN HEIFERS

## 2024 Sale Bulls



IPU 173K - Mader Walk the Line X Bartender



IPU 41L - WFL Mountain View X Top Tier



IPU 213L - WLB Top Tier X Betts



IPU 159L - Polled Skywest Pol Havoc X Starwest Bryck



IPU 204L - Walker 15J X South Seven Adonis

## LaBatte Simmentals

invites our American neighbors to our 44<sup>th</sup> annual sale.

*Thank you to our 2023 customers representing USA Simmental operations. Your support is greatly appreciated.*

Visit our website:

[www.LaBatteSimmentals.com](http://www.LaBatteSimmentals.com)  
for a link to our 2024 Sale Catalogue.

**There is a bull for everyone at a LaBatte Bull Sale. We offer semen tested bulls, with free delivery to Montana, North and South Dakota with paperwork in order and no cost to you the buyer. We will work with you if you're outside this area.**

Sight unseen purchase program available. **Call Barry or Kyron to discuss your needs. Call or text Barry at 306-815-7900. Kyron: 306-267-7530.**

The use of video previews, telephone calls, our reliable sales staff - Bohrsen Marketing and ONLINE bidding have proven to work successfully for buyers who were unable to attend previous sales in person.

For pictures and videos of sale bulls & heifers, or a catalogue, e-mail Barry at [labatte.simm@sasktel.net](mailto:labatte.simm@sasktel.net) or call or text Barry at 306-815-7900.

**Take advantage of the current US dollar exchange rate.**

As of Jan 15<sup>th</sup>, a \$8,000 bull would cost you \$6,000 in U.S. Funds. Exchange rate will be announced sale day.

Sale at Moose Jaw, Sask., is approximately two hours from Plentywood, MT or two hours from Estevan, Sask.

**Online Bidding Available:** [www.dlms.ca](http://www.dlms.ca)

Mark Shologan at 780-699-5082

### Sale Day Phones:

Barry LaBatte at 306-815-7900

Kyron Manske at 306-267-7530

Auction Mart at 306-693-4715

## Barry & Brenda LaBatte

PO Box 72, Gladmar, SK S0C 1A0

Cell: 306-815-7900

E-mail: [labatte.simm@sasktel.net](mailto:labatte.simm@sasktel.net)

Web: [www.LaBatteSimmentals.com](http://www.LaBatteSimmentals.com)

Kyron Manske Cell: 306-267-7530

## 2024 Sale Bulls & Heifers



IPU 104L - R Plus Mandate X Hammer Time



IPU 7L - IPU Black Cinch X Missile



IPU 33L - RF Caliber X IPU Bentley 81F



IPU 162L - LFE Loyalty X Springcreek Liner 56U



A Feature HEIFER

IPU 75L - RF Caliber X Drake Poker Face

**ADVERTISER'S INDEX**

Sorenson Ranch.....	IFC	Keller Broken Heart Ranch.....	12-13
3C Christensen Ranch.....	BC	LaBatte Simmentals.....	33
Ashworth Farm & Ranch Ltd.....	18	M Diamond Cattle.....	21
Bohrson Marketing Services.....	31	M&J Farms.....	24
C Diamond Simmentals.....	25	Martin Trudeau Insurance.....	28
Christensen Ranch.....	8	McMillen Ranching Limited.....	10
Crossroad Farms.....	29	NLC Simmental Ranch.....	BW
Dakota XPress.....	27	Northwest Select Simmental.....	19
Deckert Simmental Ranch.....	9	S/M Fleckvieh Cattle.....	17
DLMS.....	31	Schnabel Ranch Simmentals.....	34
Doll Simmental.....	23	T Bar C Cattle Co.....	31
Double Bar D Farms.....	31	Thyen Simmentals.....	7
Eichacker Simmentals.....	11	TSN Simmentals.....	15
Highway 83 South.....	30	Wheatland Cattle.....	4-5
I-29 Bull Run.....	6	Windy Creek Cattle Company.....	IBC
Imucell.....	32		

*Best wishes for  
a great calving  
season!*



**ND JUNIOR FIELD DAY  
AND MEMBERSHIP  
PICNIC DATE SET**

The 2024 North Dakota Simmental Association Field Day will be held May 31 and June 1 at the Foster County Fairgrounds, Carrington, ND. The event will be held in conjunction with the ND Junior Angus Field Day.

The Junior Field Day offers a variety of activities including a cattle show, showmanship contests as well as sales talk and public speaking. Educational seminars will also be presented. The annual membership picnic will be held in the evening on May 31.

All information including entry deadlines, hotel information and the agenda will be posted when available on the ND Junior Simmental Association Facebook page or go to the website at [www.ndsimmental.com](http://www.ndsimmental.com) and click on the NDJSA tab.

*A sampling of the  
sale offering!*

*Joint Production Sale*

**Saturday, February 17, 2024**

Hub City Livestock, Aberdeen, SD - 1 p.m. CST  
Flittie Simmental // Schnabel Simmental // Lazy J Bar Ranch  
**90 Simmental Bulls - 40 Red Angus Bulls**



LOT 139



LOT 128 - FULL BROTHER TO MR SR MIC DROP



LOT 154



LOT 157

**DVAuction** Broadcasting Real-time Auctions

Catalog and videos will be available online at [www.dvauction.com](http://www.dvauction.com) or contact us to receive yours in the mail.

*Schnabel*  
Ranch Simmentals

Tom and Meghan Schnabel  
605-380-2811 - 605-577-6286



[www.srsimms.com](http://www.srsimms.com)

# PROFIT THROUGH PERFORMANCE

MARCH 3, 2024 SPENCER, SOUTH DAKOTA *Production Sale*  
Dedicated to your family, your program and your profitability.



5/8 SM

**WINC REVOLUTION 300L | ASA: 4272754**  
W/C REVOLUTION 65G x REMINGTON LOCK N LOAD54U  
Homozygous Black Homozygous Polled  
*The cow families that have built the program will be found throughout; this one comes with the backing of the best.*



PB SM

**WINC TESTAMENT 332L | ASA: 4266812**  
R&R TESTAMENT J155 x W/C REVOLUTION 65G  
Homozygous Polled  
*One of the most unique genomic packages to come out of Windy Creek, combining top 10% CE with top 10% or better WW, YW & ADG.*



3/4 SM

**WINC DABO 3132L | ASA: 4266844**  
W/C DABO 703J x ES SURELOCK ZW15  
Homozygous Black Homozygous Polled  
*The first set of Dabo sons provide an outcross genetically, but the same performance you have come to expect!*



3/4 SM

**WINC RELEVANT 340L | ASA: 4266815**  
CKCC RELEVANT 0639H x CDI OUTLAW 292C  
Homozygous Black Homozygous Polled  
*The sons of CKCC Relevant 0639H have quickly become crowd favorites, the set for 2024 are the best yet!*



PB SM

**WINC RELEVANT 3137L | ASA: 4266846**  
CKCC RELEVANT 0639H x CDI OUTLAW 292C  
Homozygous Black Homozygous Polled  
*As always there will be a strong supply of baldy faced, power bulls ready for your appraisal.*



PB SM

**WINC RELEVANT 334L | ASA: 4272760**  
CKCC RELEVANT 0639H x HOOK'S BEACON 56B  
Homozygous Black Homozygous Polled  
*Out of an up and coming donor, this stud oozes quality both on paper and in the flesh.*



3/4 SM

**H/F MR REVOLUTION 6312L ET | ASA: 4287061**  
W/C REVOLUTION 65G x REMINGTON LOCK N LOAD54U  
*Quickly add pounds and dollars to the bottom line of your program with these Revolution 65G sons.*



3/4 SM

**BLAG REVOLUTION 321L | ASA: 4310389**  
W/C REVOLUTION 65G x W/C EXECUTIVE ORDER 8543B  
Homozygous Polled  
*An absolute powerhouse herd sire prospect that blends the best of both worlds.*



1/2 SM

**H/F MR MIC DROP 6199L | ASA: 4287062**  
MR SR MIC DROP G1534 x ANGUS  
*Regardless of your production goals, we have sire options to help you get to where you want to go!*



*Windy Creek*  
Cattle Company

Jeremy, Bethany, Cash & Emerson Lehrman  
Jeremy: 605-530-5909 | Cash: 605-270-4848  
25064 432nd Ave. Spencer, SD 57374  
windycreek@triotel.net

Scan the code to find us on Facebook!

With Guest Breeders  
Blagg Family &  
Hofer Land & Cattle

Sale Management by  
*Innovation*  
AgMarketing, LLC

Tim Anderson: (605) 682-9343  
Jered Shipman: (806) 983-7226  
Graham Blagg: (530) 913-6418  
InnovationAgMarketing.com

**DVAuction**  
*Broadcasting Real Time Auctions*  
Real time bidding & proxy bidding available.

**LARGE SELECTION. GUARANTEED. VALUABLE.**



3159L  
ASA# 4314741 : PB SM  
3C Flint 8483F B x 3C Danforth 6711D BZ



320L : ASA# 4268764 : 3/4 SM 1/4 AN : HB/HP  
LCDR Reserve 210J x MR NLC Avenue 3088A



336L : ASA# 4268778 : 3/4 SM 1/4 AN : HB/HP  
LCDR Reserve 210J x MR NLC Avenue 3088A



3147L : ASA# 4314753 : PB SM : HP  
3C Flint 8483F B x 3C Beau NS 4332b BZ



3255L : ASA# 4314647 : PB SM : HB/HP  
Schooley Jacque 823J x Welshs Dew It Right067T



3203L : ASA# 4314698 : PB SM : HB/HP  
Schooley Jacque 823J x 3C Danforth 6711D BZ



308L : ASA# 4268752 : PB SM : HB/HP  
LCDR Favor x BCLR Cash Flow C820

*53rd Annual Production Sale* **AT THE RANCH, WESSINGTON, SD**

**FRIDAY, MARCH 15, 2024**

*Offering 150 Top Tier Simmental and SimAngus<sup>2024</sup> Yearling bulls with added carcass and maternal values*



Rick, NaLani,  
NaLea, Chase, & Swayzee Dunsmore  
21830 372nd Ave., Wessington SD 57381  
Home: 605-458-2425 • Rick cell: 605-354-7523  
NaLani cell: 605-350-5216



John & Carly Christensen  
Tyler, Cam, Law, Cecil & Kit Fagerhaug  
37273 216th St • Wessington, SD 57381  
Home: 605-458-2218 • John Cell: 605-350-1278  
Tyler Cell: 605-280-1416 • Cam Cell: 605-350-2018