

South Dakota
SIMMENTELLER & **SIMMENTAL SCENE** North Dakota

JANUARY 2026



Industry leading genetics that are right for the times...
Simmental, SimAngus™, and Angus seedstock that are bred
and developed with your operation's bottom line in mind!



The 9th Annual
CK CATTLE & WAGER CATTLE
PRODUCTION SALE

SATURDAY | FEBRUARY 14, 2026

Higmore, South Dakota



Offering 120+ Bulls & 50+ Bred Heifers

Sons of Bridle Bit Recharge K256, ES Right Time FA110-4, WAGR Patriot 1008J,
CKCC Lincoln 0631H ET, ES Titan LJ44, Deer Valley Growth Fund, Musgrave Jumbo & more!

ASA
The
PERFORMANCE
RECORDS
CKEFFLING.COM
DVAuction

CK *cattle*
CHRIS & KRISTI EFFLING
Chesney & Kenidey
Hadley & Cagney Schotte
Chris: 605-769-0142 | Kristi: 605-769-1308

Wager *cattle*
LANNY & JAYNE WAGER
Dusty & Aimee Wager
Lanny: 605-769-1211
Dusty: 605-769-5010

Sale Management by:
INNOVATION
AqMarketing, LLC
Jered Shipman: 806-983-7226
Graham Blagg: 530-913-6418
Tim Anderson: 605-682-9343
innovationagmarketing.com





www.NorthDakotaSimmental.com

Lyndon Hoiby, McGregor President
(701) 641-1083 hoibysim@nccray.com

Jason Quandt, Oakes Vice President
(701) 710-0080 jason@quandtbrothers.com

Kim Myers, Kathryn Secretary/Treasurer
(701) 308-1018 gkmyers@outlook.com

Jaxon Deckert Director
(701) 425-5882 jaxonwd3@gmail.com

Wyatt Hansen, Ryder Director
(701) 720-4850 wyattnhansen@gmail.com

Trey Klain Director
(701) 531-2008 trey.klain@gmail.com

Matt Kline, Hurdsville Director
(701) 693-6317 klsrscows@gmail.com

Ethan Steffan, Killdeer Director
(701) 290-0371 ethansteffan@gmail.com

Derek Sys, Douglas Director
(701) 509-5870 dj.sys@hotmail.com



www.SouthDakotaSimmental.com

Bridget Twedt, Beresford President
(605) 777-5404 bridget.twedt@k12.sd.us

Brett Tostenson, Highmore. Vice President
(320) 226-3915 blacksandranch@gmail.com

Kevin Blagg, Salem Treasurer
(605) 240-0015 kblagg@firstdakota.com

Tom Harris, Plankton Secretary
(605) 999-8803 harriscattle6@gmail.com

Tyrell Mitchell, Kadoka Director
(605) 488-0119 . tcmsimmentals@outlook.com

Mike Thyen, Hayti Director
(605) 520-0575 tbirdlab@itctel.com

Cory Altena, George Director
(605) 366-0400 altenashowcattle@frontier.net

Andy Mark, Viborg Director
(712) 441-5920 ajmark398@gmail.com

South Dakota SIMMENTELLER & North Dakota SIMMENTAL SCENE

Editor Tamra Heins, New Salem, ND
(701) 391-6431 · tamra@strategicconcepts.biz

Design Sheyna Strommen, Solen, ND
(701) 290-3886 · strommen@westriv.com

The following terms and conditions have been agreed on by the North Dakota & South Dakota Simmental Association's Board of Directors and the Publication Committee:

Advertising Space Rates

Size	4C
Full Page:	\$675
1/2	\$475
1/4 Page	\$275

Advertising Deadlines

Issue	Deadline
January, 2026	Dec. 15, 2025
February, 2026	Jan. 15, 2026
November, 2026	Oct. 15, 2026

Terms: All advertising accounts are due and payable as invoiced. Interest charges of 1% per month will be assessed to accounts that are 30 days past due.

Delinquent Advertiser's Account: Advertisers knowingly and expressly agree and consent that, whenever accounts receivable for an advertiser have not been paid as of 90 days from date involved, advertising privileges will be suspended until full payment has been received.

Copy Changes: Alterations in advertising copy, if requested after closing dates, will be permitted only if time allows.

The North Dakota and South Dakota Simmental Associations and this publication reserve the right to refuse any advertising copy at our sole discretion. The North Dakota and South Dakota Simmental Associations and this publication assume no responsibility for the accuracy of the advertising content submitted. Advertisers assume all responsibility for the accuracy and truthfulness of submitted advertising containing pedigrees or statements regarding performance.

Editorial Content: Opinions expressed are those of the writer and not necessarily those of the North Dakota and South Dakota Simmental Associations or of this publication. Photographs and manuscripts are welcome, but no responsibility is assumed either while in transit or while in this office.

About the Cover: The pasture photo was captured by Matt Kline of Kline Simmentals, Hurdsville, ND. If you'd like to see an image from your ranch grace the cover of an upcoming issue, e-mail a high-resolution image to Tamra Heins.

Heins Sight...

By Tammy Heins, Editor

Welcome to 2026! What an exciting time to be in the cattle business. And by exciting, I think I mean volatile. It seems like there are hundreds of mitigating factors out there that influence price with little to no control by cow-calf producers. I had a long-time North Dakota pig farmer tell me once, the only thing you can control is your costs, so start there... Seems like pretty practical advice for 2026.

I hope you enjoy the year-end activities showcased in the magazine by the North and South Dakota Simmental Associations. The annual meeting awards are all featured in this issue, along with some insights into our current association presidents. I am impressed with the two junior associations as they have a strong membership who actively represent and promote the Simmental breed in all their activities.

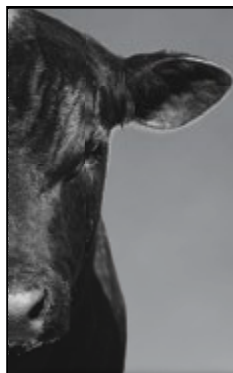
It was an honor for me to attend the ND Simmental Banquet where Steve Ulmer (otherwise known as Beak) was awarded the Pioneer Award. Steve was very influential in teaching my brother and I about showing cattle in our early years and I consider him a friend and mentor.

Steve always had great lines, but I especially like the one in his article that states, "Stick to your path, but be willing to adjust."

What great advice as we head into 2026 and the super busy Simmental Sale season, sometimes we need to adjust, and sometimes it's hard to recognize when to do that.

Good luck with this sale season, whether you are buying or selling, I am hoping the roads stay clear, feeder calf prices stay high, and the sale lunch is cooked to perfection.

Enjoy the Day!



Annual Bull Sale

TUESDAY,

FEBRUARY 24, 2026

At the WIX Barn & Lodge
Richardton, ND • 2 p.m. MT

Selling

72 Age-Advantaged

SimAngus™ Bulls

(62 Black and 10 Red)

10 Commercial Bred Heifers

DVAuction
Broadcasting Real-Time Auctions



Follow us!

*For more
information
or a catalog:*

**Zane Wicks
(701) 290-3938**

**Mary Jo Wicks
(701) 690-7755**

www.wickscattle.com
Facebook: Wicks Cattle



DOUBLE J FARMS

PARENT VERIFIED WITH GENETIC ENHANCED EPDs

SIMMENTAL CATTLE

52nd Annual Bull & Bred Female Sale

FRIDAY, JANUARY 23, 2026 12:00 NOON • 48672 252nd Street • Garretson, SD



Recognized by
the American
Simmental
Association as one
of the top Dedicated
Performance
Advocate Herds!

SELLING 100 LOTS

SIMMENTAL, SIMANGUS™ & ANGUS
BULLS, BRED FEMALES & EMBRYOS



N5174 ET Assurance X Falcon

ASA #4569276 – PB SM Homo Polled & Homo Black
This sire group features 4 full brothers with large frame,
excellent growth, & structure built to last!



N5177 ET Revolution X Cowboy Cut

ASA #4569279 – PB SM Homo Polled & Homo Black
Growth, maternal, and carcass traits in an
eye-appealing package.



N536 Magnifique X Frosty

ASA #4569130 – 5/8 SM Homo Polled & Homo Black
Calving ease bulls at its best with added growth!



N5149 ET Spotlight X Makers Mark

ASA #4569259 – 3/4 SM Homo Polled & Homo Black
Multiple high-capacity, heavy muscled sons from our herd
sire Spotlight & his 2 full brothers.



N599 Genesis X Santa Fe

ASA #4569192 – PB SM Homo Polled & Homo Black
Consistent growth and superior carcass genetics.



M474 Essential X Outlaw

ASA #4406385 – PB SM Homo Polled & Homo Black
Bred to Bold Ruler • Many bred females straight from the
heart of the herd.



M4154 ET Exclusive X Legacy

ASA #4406460 – 1/2 SM Homo Polled & Homo Black
Bred to Magnifique • Daughter of one of the most prolific
cow families recognized by the ASA!



M4173 ET Next Level X Long Distance

ASA #4406466 – 1/2 SM Homo Polled
Bred to Key Note • 4 flush mates all AI'd to industry
leading sires!

For more information or to request
a catalog... Call, text or email:

KIPP JULSON
605-351-9088

doublejfarm@alliancecom.net
www.doublejsimmentals.com

MARKETING REPRESENTATIVES:

Justin Dikoff, DV Auction/Auctioneer 605-290-0635
Kelly Schmidt 406-599-2395 • Jim Scheel 605-545-1521



Visitors always welcome!

DVAuction
Broadcasting Real-Time Auctions

*Catalog provided
upon request!*



SCAN QR CODE
FOR A DIRECT
LINK TO
ALL SALE
INFORMATION!

100

X

RANCH
LLP

*Coming 2 Year
Old Fleckvieh
Bulls!*

c/x

Fleckvieh Genetics raised in "Cowboy" country

2nd Annual Fleckvieh Bull Sale

FEBRUARY 17-18

SALE

TIMED - ONLINE SALE AT

DVAuction
Broadcasting Real-Time Auctions



Honoring Our Patriarch, Wade Guttormson (1954-2025)

"100X Fleckvieh...Our Way of Life"
Visitors always welcome!

Jamie Guttormson 701-833-8509 • Guttormj@outlook.com • Velva, ND



Ellingson Assurance N574 ASA# 4533737

CE	BW	WW	YW	ADG	MCE	Milk	MWW	MB	REA	\$API	\$TI
6	2.8	105	173	.43	7	31	83	.08	1.39	136	94



Ellingson Galileo N582 ASA# 453375

CE	BW	WW	YW	ADG	MCE	Milk	MWW	MB	REA	\$API	\$TI
10	2.3	107	178	.45	8	35	88	.76	1.1	173	113



Ellingson Assurance N583 ASA# 4533791

CE	BW	WW	YW	ADG	MCE	Milk	MWW	MB	REA	\$API	\$TI
4	4.4	109	178	.43	5	25	79	.11	.8	142	93



Ellingson Ace N589 ASA# 4533787

CE	BW	WW	YW	ADG	MCE	Milk	MWW	MB	REA	\$API	\$TI
-4	7.4	116	176	.38	.1	27	84	-.04	1.54	103	89



Ellingson/STR Anthem M4043 ASA# 4463667

CE	BW	WW	YW	ADG	MCE	Milk	MWW	MB	REA	\$API	\$TI
7	.7	85	126	.25	4	22	65	.35	1	143	89



Ellingson Anthem N576 ASA# 4533703

CE	BW	WW	YW	ADG	MCE	Milk	MWW	MB	REA	\$API	\$TI
6	5.3	103	159	.35	5	22	74	.33	1.14	135	94



Ellingson Guardian N546 ASA# 4533816

CE	BW	WW	YW	ADG	MCE	Milk	MWW	MB	REA	\$API	\$TI
18	-3	97	155	.36	10	21	69	.55	1.23	189	108



Ellingson Assurance N542 ASA# 4533790

CE	BW	WW	YW	ADG	MCE	Milk	MWW	MB	REA	\$API	\$TI
6	4.6	112	183	.44	4	27	83	.02	.92	123	93



Ellingson Ace N565 ASA# 4533803

CE	BW	WW	YW	ADG	MCE	Milk	MWW	MB	REA	\$API	\$TI
2	4.6	105	151	.29	-.1	27	79	.2	1.44	108	93

Looking for Performance?

Ellingson Simmental Performance Bull and Female Sale

Friday, January 23, 2026 • 1:00 pm CST

Sale Location: At the farm, Dahlen, ND

Bulls will be SEMEN TESTED and GUARANTEED BREEDERS.

Selling: 70 Yearling Simmental and SimAngus™ Bulls
Three 16-Month-Old Bulls, 25 Open Yearling Heifers, and 20 Embryos

Other sires include: KBHR Honor H060, TNT Comfort Zone J328, R Plus Yuma 9087G, R Plus Estevan 2162K, HCC Whitewater 9010, Gibbs 9114G Essential, TERS Kodiak 206K, Wheatland Bull 680S, R Plus Uppercut 6103D, Schooley Krown 28K, CLRS Guardian 317G, THSF Lover Boy B33, KS Calibrate K209, Bridle Bit Resource G9117 and Hooks Eagle 6E.

For catalogs and information:



Terry Ellingson & Family

Phone: 701-384-6225

Cell: 701-741-3045

5065 125th Ave. NE • Dahlen, ND 58224

email: tellingson@polarcomm.com

Guest Consignor:

Strommen Simmentals, Arthur, ND • 701-967-8320

The catalog and updated information (homozygous polled test, ultrasound and scrotal measurements) will be available online.

DVAuction

www.ellingsonsimmentals.com or www.simmental.org

TWEDT ELECTED PRESIDENT OF SD SIMMENTAL OF ASSOC.

Bridget Twedt serves as the South Dakota Simmental Association President. Twedt is an Agricultural Education Teacher and FFA advisor by day and Farmwife - Cattle Producer, the other hours of the day, alongside her family.

Twedt, and her husband, Jason, have been married for 19 years and have three kids Cassandra, Taten, and Jade. They reside on an acreage outside of Beresford

"As a cow-calf operation we liked the growth of the calves from spring to when we are done backgrounding in January. Simmental genetics have been highly influential on our herd, benefiting us on the maternal instincts, producing growthy cattle, and giving us offspring that benefited change in our herd."

- Bridget Twedt, SDSA President

but farm with their in-laws, farming 1500 acres of corn and soybeans.

The Twedt's are a non-traditional generational family farm. They have been fortunate to have been given gracious opportunities to raise cattle from the Young family. With this opportunity, they are able to utilize the Young Farms to house and work cattle and run their cows on stocks and utilize their pastures.

Twedt and her husband have been growing their Simmental based herd for 15 years. They chose Simmental cattle because of their growth factors. Twedt says, "As a cow-calf operation we liked the growth of the calves from spring to when we are done backgrounding in January. Simmental genetics have been highly influential on our herd, benefiting us on the maternal instincts, producing growthy cattle, and giving us offspring

that benefited change in our herd."

Twedt explains that one of the greatest benefits of being a part of the cattle business is the people they work with. "We have gained so many friends from across the state and into the surrounding states. These friends are people we continually count on to ask questions, get advice, talk through production ideas, and help work together as cattle producers to benefit the good of our industry," said Twedt. "That

would have to be the number one reason why I got involved in the South Dakota Simmental Association, the people. There are great cattle producers and industry leaders within the state that produce Simmental cattle then also love to promote the breed," says Twedt. She believes the Simmental Association as a whole has created some great opportunities for producers and is excited to be a part of that and bring that to the state level.





Annual Production Sale:
FEB. 20, 2026
 KIST LIVESTOCK, MANDAN, ND • 1 P.M.

130 BULLS
50 BRED HEIFERS
 RED • BLACK • SIMMENTAL • SIMANGUS™



SIMMENTAL
PERFORMANCE
with **MATERNAL**
RESILIENCE!



MATERNAL RESILIENCE • *Noun* •
 Definition: The innate ability of **Dakota Xpress**
 cows to withstand challenges, adapt, and continue
 to effectively raise healthy, heavy calves. *It's what*
they've been bred to do since the 1970's!

Contact us to be added to the mailing list:

DAKOTAPRESS.COM • **DVAuction**
Revolutionizing How You Auction

WADE STAIGLE FAMILY (701) 226-6464
KEVIN HANSEN FAMILY (701) 720-6551

SD SIMMENTAL ASSOC. HOSTS ANNUAL BANQUET AND AWARDS NIGHT



Kevin Blagg (right) received an award for his dedication to the SD Simmental Association, serving as Treasurer for the last 8 years.



Thank you to Martin-Trudeau Insurance and their dedication to the SD Junior Simmental Association. A sincere THANK YOU to Martin Trudeau Insurance-Mitchell, SD - for their support and donation to SDJSA! We wouldn't be able to offer our programming without them!

Awards were given to Juniors by Junior Advisor Ashley Werning.



Above: South Dakota Junior Simmental Association gathered for an awards night in December.

KING OF THE RANGE

26th Annual ★ ★ ★ ★ PRODUCTION SALE

Thursday, February 5, 2026

1 PM CST | At the Ranch **DVAuction**

Selling 100 Black and Red Simmental Bulls!



STAV AMPLIFIED 21L



STAV AMERICAN OUTLAW 34L



HOOK'S GALILEO 210G



TERS LATIGO 312L



STAV SWEET CRUDE 69K





SCHOOLEY KROWN 28K

Developed by *Cattlemen*, for *Cattlemen*.

Bulls that stay, pay. We focus on *longevity* and *quality* in our herd, so it pays in yours.

Commercial cattlemen's source for functional, honest, and problem-free cattle.

**S STAVICK
M SIMMENTAL**

Mike, Myra, Owen and Liv Stavick
10752 BIA Road 15, Veblen, SD
605-237-4663 (Mike) • 605-551-9016 (Owen) • 605-290-9202 (Liv)
stavicksim@gmail.com • stavicksimmental.com  

SOUTH DAKOTA PROMOTER OF THE YEAR: A LEGACY CARRIED FORWARD

Rooted in Resilience, Growth, and Unwavering Commitment

By Amy Blum

The South Dakota Simmental Association's 2025 Promoter of the Year, Mike Thyen (pronounced Teen) of Hayti, is not one to seek the spotlight. In fact, if there's a hallmark of Thyen Simmental, it's quiet persistence – showing up, doing the work, and believing deeply in people, cattle, and the future they can build together.

Thyen's roots in the Simmental breed run deep. His parents, Ron and Dianne, founded Thyen Simmental in 1974, building a program grounded in hard work, innovation, and relationships that would shape generations to come. Mike grew up alongside the cattle, the land, and the rhythm of ranch life, absorbing lessons that would guide him long before he realized how fully he would one day step into the legacy.

This year, Thyen's foundation was tested in ways no one could have anticipated.

On February 1, his father Ron died following a short battle with an aggressive cancer. The Thyen family, known for their closeness and shared commitment to the ranch, was devastated by the loss of their patriarch. Ron had been a steady presence, a teacher, and a visionary whose influence stretched far beyond his own herd.

Yet even in grief, the family honored his wishes.

Just days after Ron's passing, the Thyens faced a decision: they had a heifer consigned to the 2025 Black Hills Stock Show. Mike didn't think the family should go. The loss was too fresh, the weight too heavy. But Dianne was resolute. This, she said, was what Ron would have wanted.

So, they loaded up and headed west.

The family attended the show, carrying Ron's presence with them, before receiving early dismissal so they could return home to bury the man who had shaped their lives. There was little time to pause.

"...making better dirt, feeding cattle well, and creating reliable income opportunities that support the entire operation..."



Mike Thyen was awarded the South Dakota Simmental Association's 2025 Promoter of the Year. Thyen has been an influence on youth in the cattle industry by introducing them to showing cattle, helping them purchase heifers and growing their herds. He has worked passionately on fundraising for scholarships at the Watertown Farm Show as well as helping producers and buyers to show, sell, and purchase cattle through the Watertown Farm Show.

...Continued on page 16



Thyen Simmental runs generations deep. Mike Thyen (front left) was named Promoter of the Year during the SD Simmental Association's banquet in December.

POWERFUL
DAMS

KUNKEL

SIMMENTAL RANCH

PROFITABLE
PROGENY



N216

IPU Rawhide 59J
x KWA Integrity
148C
ASA: 4579257
Adj. 205: 779
Homo Polled

Annual Production Sale

2/6/26

FRIDAY, FEBRUARY 6, 2026

At the Ranch • New Salem, ND • 1 P.M. CST

65 BULLS • 44 BRED HEIFERS

Visitors always welcome!



N185

WS God's Country 6L x GW Major Move 590E
ASA: 4579226 • Adj. 205: 799 • Homo Polled



N201

TNT Dignify J459 x IPU Red Zone 82Y
ASA: 4579242 • Adj. 205: 822 • Homo Polled



N127

RF Caliber 014G x BBS Batman F4
ASA: 4579168 • Adj. 205: 829
Homo Black/Homo Polled



N170

QB Sonic K36 x BGL Rooster D181B
ASA: 4579211 • Adj. 205: 781 • Homo Polled



N168

WS God's Country 6L x CMS Sochi 307A
ASA: 4579209 • Adj. 205: 765 • Homo Polled



N174

LRS Dutton 611K x Hook's Black Hawk 50B
ASA: 4579215 • Adj. 205: 859
Homo Black/Homo Polled



N132

WS Proclamation E202 x BBS Batman F4
ASA: 4579173 • Adj. 205: 829
Homo Black/Homo Polled



N106

Kesslers Commodore 6516 x MRL Gunsmoke 38H
ASA: 4599148 • Adj. 205: 801
Homo Black/Homo Polled

Kunkel Simmentals
DKSR

Call to be added to our mailing list and to request a catalog!

Dusty & Kayla Kunkel, New Salem, ND • (701) 471-5342 • (701) 843-7006 • f

E-mail: kdkunkel@westriv.com •

DVAuction
Livestock • Equipment • Real Estate • Auction Services

ALLIED
LIVESTOCK PRODUCTION

thyensimmentals & solsaangus

6TH ANNUAL

PRODUCTION SALE

SATURDAY, FEBRUARY 21, 2026
1:00PM

27 SIMMENTAL & SIMANGUS BULLS

+ 20 SOLSAA ANGUS BULLS

& SPECIAL GROUP OF
REPLACEMENT HEIFERS

SIRES INCLUDE:

- Mader Walk This Way
- TSA Magnum L357
- KBHR Revolution
- KCCI Confederate

PICTURED: TSA MAGNUM L357



MADER WALK THIS WAY X E7151'S FULL BROTHER SELLS



Check out our lots at the
Black Hills Stock Show &
Watertown Winter Farm Show



45142 183RD ST • HAYTI, SOUTH DAKOTA

MIKE THYEN • 605-520-0575

f /THYENSIMMENTALS

Simmental

BEGGER'S

Angus

50
Years

**Selling 160 Black Simmental,
SimAngus™ and
Angus Bulls**

**Our Golden
Anniversary Sale**

Begger's
DIAMOND V RANCH

BIG SKY GENETIC SOURCE BULL SALE

Wednesday, February 4, 2026 • 12:30 PM – At the Ranch – Wibaux, MT



Two-year-old heifer

30 Purebreds, 110 SimAngus™, 20 Angus Sell.
50 are 18-month-old fall-borns, ALL ARE Black and
Polled, most are homozygous black and polled.



Sensibly sized and efficient

COW EFFICIENCY AT ITS FINEST:

The basis of any good breeding program is the mother cow. Our motto is: **"THE RANCHER COMES FIRST."** Every breeding decision we make is to improve our customer's bottom line. BEGGER'S DIAMOND V RANCH provides the perfect blend of COW SENSE, COMMON SENSE and SCIENCE. We know the value of a good mother cow; she must be fertile, efficient and problem-free. She must have the staying power to produce a valuable calf year-after-year on her own, with no extra assistance in the environment mother nature provides. She must possess a low-maintenance, easy-fleshing body type that requires little or no extra input. She has to have a problem-free udder and have a good gentle attitude with a set of feet and legs that will serve her until she exits your program at a ripe old age.

- ❖ We are your source for homozygous black and polled Simmental, SimAngus™, Angus genetics, the top 150 bulls out of 275 sell.
- ❖ Many ½ & ¾ brothers sell in volume enabling you to assemble like bred genetics that are predictable and consistent. They will all add eye appeal and value.
- ❖ From a program that does the day-to-day work. We calve, feed, and work around our cattle every day, so we know our cows if they become problematic. They won't see next year and their only way out is through a packing plant.
- ❖ We are straight shooters. We honestly try to answer and meet our customer's questions, needs and concerns. Our bulls come with a complete 100% satisfaction warranty. If there is a problem we will make it right.
- ❖ We provide free bull keep until April, along with a free breeding soundness exam and free delivery, for the first 500 miles on purchases over \$5,000.
- ❖ Every bull walks through the sale ring enabling you to see what you are buying. Some pictures and videos just don't represent cattle as they should.

Raising cattle that work for the cow-calf producer, the feeder, and the packer, while providing an enjoyable eating experience for the consumer should be every cattle producer's goal. Ranchers work hard and should expect their cattle to do the same. There are no shortcuts with today's high inputs; your cattle have to be profitable and efficient. Blending EPD and genomic traits requires discipline, common sense, and patience. It doesn't matter how impressive the EPD are or the size of calf at weaning. Cattle that lack efficiency and require extra labor and costly inputs are not desirable. This is why common sense and an experienced eye still play a major role in every breeding decision we make.

EXTREMES ARE EASY TO ACHIEVE, THE RIGHT COMBINATION OF BALANCE TAKES DISCIPLINE, PATIENCE, AND A LIFETIME OF EXPERIENCE TO PERFECT.

DVAuction
Broadcasting Real-Time Auctions

Look for us on Facebook



Bill Begger: 406-796-2326 / John Begger: 406-956-0151
darbegger@gmail.com / 482 Custer Trail Road / Wibaux, MT 59353

beggersdiamondvranch.com

Thyen, Continued from page 12

Almost immediately, Mike stepped into his role as Simmental sale manager for the Watertown Winter Farm Show, followed closely by preparations for the family's first bull sale without Ron. February, already heavy with loss, pressed on.

Then came another blow.

On February 25, Mike unexpectedly lost a dear friend and cattle partner, Charlie Tesch. The pair owned cattle together and spoke daily, often discussing the cattle industry, market trends, and show strategy. Mike credits Charlie with playing a pivotal role in the family's growth and success at winter farm shows—both as a mentor and a trusted sounding board.

For Mike, the losses of 2025 were personal, profound, and layered. But, they also clarified his purpose.

That purpose is evident in his leadership within the South Dakota Simmental Association and his tireless work with the Watertown Winter Farm Show.

Under Mike's guidance, the show has grown from single-digit entries to a projected 20 bull and 20 heifer consignments for the 2026 event. He invested time in learning the mechanics of sponsorships—asking questions, building relationships, and understanding the “why” behind sustainable support.

That effort paid off. Sponsorships now cover the consignor meal before the show, multiple prize opportunities, and all sale

commissions, reducing barriers and encouraging participation across the membership.

Mike also helped create opportunity through four memorial grant awards available to junior and senior members, honoring Dennis Schmig, Deb Ford, Aaron Hamann, and Ron Thyen. The grants reflect what Mike values most: remembering those who built the breed while investing in those who will carry it forward.

Watertown holds special meaning for Mike. As a child, the Winter Farm Show was his family's vacation—a place of learning, connection, and tradition. It was also where he purchased his first heifer from long-time family friend and mentor Dennis Schmig, a moment that cemented his passion for the breed.

Though deeply rooted in agriculture, Mike's path wasn't a straight line back to the ranch. After high school, he earned a teaching degree and spent more than 14 years in education, teaching science and coaching basketball, football, and track.

“I always enjoyed sports, which is why

I taught; I wanted to be a coach,” Mike said. “But I also always knew I'd come back to the ranch.”

That return came in 2010, with Ron and Dianne's full support. One of the first decisions the family made was to bring artificial insemination back into herd development—a practice central to their growth in the 1970s and '80s. In the 15 years since, the herd has grown from 100 cows to 350. The operation also farms approximately 1,500 acres.

Mike describes his approach simply: making better dirt, feeding cattle well, and creating reliable income opportunities that support the entire operation.

Today, Thyen Simmental remains a true family endeavor.

Dianne continues to be a stabilizing force and beacon of hope for the business. Alongside Mike are his wife Patty and her daughter's family. “Taylor and Tyler Ronne have our three grandkids, Kinsley, Suten, and Stetson. Kinsley is old enough to show, and she is a great part of the crew here.”

His sister Eva Engebretson handles day-to-day ranch and farming needs, with her husband Tom stepping in significantly since Ron's passing; their two sons are also involved. Sister Kathryn Jurens, a graphic designer, manages the family's catalog and website, while her husband Steve—known as “the voice of Thyen Simmental”—brings communication expertise through his role at Northeast Radio. The couple's two daughters cherish their time at the ranch and with the cattle.

The Thyen family is also fortunate to have Dylan Gerberding on board as full-time help and a herd of friends who show up to help when big projects arise.

Ron Thyen often asked, “How do you eat an elephant?”

“One bite at a time,” he'd say.

After the losses in 2025, Mike adjusted the answer. Now when asking how to eat an elephant, Mike responds, “Bite off more than you can chew. Then, get busy figuring out how to chew it one bite at a time!”

That mindset—rooted in resilience, growth, and unwavering commitment—is why Mike Thyen stands as the South Dakota Simmental Association's 2025 Promoter of the Year. Not just for what he's built, but for how he's carried it forward.

“For Mike, the losses of 2025 were personal, profound, and layered. But, they also clarified his purpose...”



CHRISTENSEN SIMMENTAL



55TH ANNUAL Online PRODUCTION SALE

April 26, 2026

Selling 75 Yearling Bulls

Deer Vally Growth Fund
ASA# 3681957

OTHER SIRES INCLUDE:
Colorado Bridle Bit E752
TJ Stone Cold
T/D Patton 771

Online-only Sale
Bids Close at 6 p.m.

DVAuction

Visitors always welcome
7N 7W of Wessington Springs, SD

CHRISTENSEN SIMMENTAL & ANSON RANCH

37548 221st Street • Wessington Springs, SD 57382
Amy Christensen: 605-350-0103 • Collin Anson: 605-461-8796
Chris Christensen: 605-539-9522

E-mail for more info: chrishei@venturecomm.net



HART SIMMENTALS

JOIN US FOR OUR 51ST ANNUAL SALE
WEDNESDAY, FEBRUARY 18, 2026

Video Sale at 1:00 PM

At The Farm 2 miles south of Frederick, SD
10904 387th Ave., Frederick, SD 57441

70 BULLS & 10 FANCY OPENS



This sale will be
broadcast live
on the internet! **DVAuction**
Broadcasting Real-Time Auctions

ESSOLID GOLD JG15

ASA#3946405

- Solid Gold has 13 bulls being featured in our 2026 production sale!
- Averaging over 8750lb. weaning weight collectively
- #3 bull in the offering with an impressive 936 actual weaning weight



TRAX DISTINCTION L12

ASA#4263444

- He has 14 bulls being featured in our 26' sale averaging over 882lbs weaning weight collectively
- #2-bull in the offering with an impressive 940 actual weaning weight and with 5 out of the 14 with over a 900lbs weaning weight



HLTS/CLWTR ALWAYS ON TIME K4

ASA#4158793

- He has 8 bulls being featured and averaging over 840lbs weaning weight
- # 5 bull in the offering with an impressive 918 actual weaning weight

HART JAW BREAKER 058K

ASA#4053366

- Has 8 bulls being featured and averaging over 844lbs weaning weight
- #1 bull in the offering with an impressive 988 actual weaning weight



**Largest Purebred Simmental
offering in the U.S.A.**

HART SIMMENTALS

Mara, Justin & Jamie • 4hooves@nvc.net • JUSTIN 605-216-6469

VIEW FULL SALE OFFERING ONLINE AT WWW.EBERSALE.COM

Sale Managed by:

Eberspacher
ENTERPRISES INC.

Val & Lori Eberspacher
Office 507-532-6694
Cell 612-805-7405
sales@ebersale.com

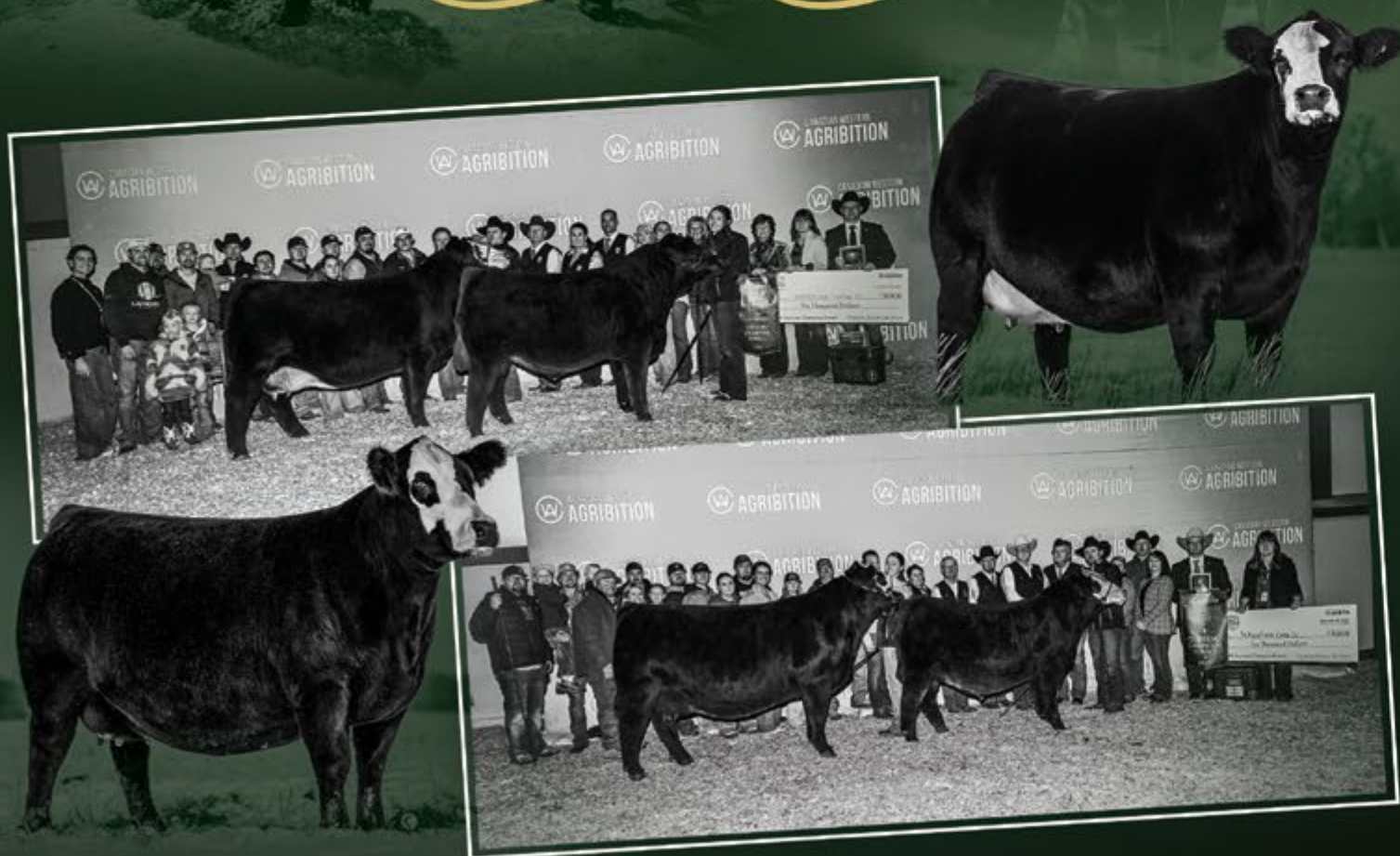
Follow our Facebook page for sale updates!

MAKE AN

IMPACT

LEAVE A

Legacy



PROUD TO HAVE BRED & RAISED BOTH THE

2024 SUPREME CHAMPION FEMALE & *2025* SUPREME CHAMPION FEMALE

AT THE CANADIAN WESTERN AGRIBITION CN BEEF SUPREME



***NEW DATE**
22ND ANNUAL BULL SALE
TUESDAY MARCH 10, 2026
SELLING 100 SIMMENTAL & ANGUS BULLS



FOR THE FIRST TIME IN 35+ YEARS

WE WILL BE OFFERING A SELECT GROUP OF PUREBRED FEMALES
SIMMENTAL & ANGUS OPEN REPLACEMENT FEMALES FROM *THE VERY TOP* OF THE PROGRAM



VERN & DENISE | RILEY & MADISON | CODY-RAY & SHAYNE
BIENFAIT, SK | WWW.WHEATLANDCATTLECOMPANY.COM | 306-461-8200



SHANE, ALAINA, MCKENNA & KADEN MICHELSON
403-363-9973



DREAMS DON'T WORK UNLESS

By Amy Blum

you do!

Jeremy and Bethany Lehrman and Kids Cash and Emery were named the 2025 SD Simmental Association's Producer of the Year. They are from Spencer, South Dakota where they have a seed stock Simmental operation, Windy Creek Cattle Company, where they run 200-head of registered Simmental cows. They host an annual production sale the first Sunday in March where they market 90+ Simmental and Sim-Influenced bulls. Congrats to the Lehrman family for being SD Simmental Associations Producer of the year.

There is a sign hanging in the Lehrman home that quietly sets the tone for everything they do: Dreams don't work unless you do. It's not décor. It's a family creed.

That mindset has guided the Lehrmans for 20 years, and it's the philosophy that helped Jeremy and Bethany Lehrman establish Windy Creek Cattle Company as an operation defined by focus, discipline, and people. Their commitment to quality recently earned them recognition as 2025 Breeder of the Year by the South Dakota Simmental Association.

Located near Spencer, Windy Creek is known for producing high-performance Simmental bulls—the kind that leave their mark on both progressive purebred programs and hardworking commercial herds. Their genetics are sought far beyond South Dakota, reaching deep into southern

Texas, north into Nova Scotia, and just about everywhere in between.

But ask the Lehrmans what truly defines their program, and the answer isn't cattle alone.

"We're really in the people business," Jeremy says. Bethany adds, "The best compliment we can get is hearing about our customers' success."

BUILT, NOT INHERITED

Jeremy and Bethany have been married for 20 years. Though they live near Jeremy's childhood home, their ranch and herd were built from the ground up. They are first-generation Simmental breeders, starting with five bred heifers from Wernings and the purchase of a donor cow from the Effling/Wager families in their early years—decisions Jeremy now points to as foundational moments that shaped who they would become as cattlemen.

...Continued on page 22





Where we're also in
the **people** business.

Profit Through Performance
Sunday, March 1, 2026
Spencer, SD

Windy Creek
Cattle Company

Jeremy, Bethany, Cash & Emerson Lehrman
Jeremy: (605) 530-5909 | Cash: (605) 270-4848
Find us on Facebook!

Windy Creek, Cont'd from page 20

Like many young producers, their start came with trials, errors, and valuable lessons. Around year three, the Lehrmans found themselves managing a mix of breeds, trying to market cattle in multiple directions at once. The realization came quickly and decisively.

"You can't be everything to everyone," Bethany says. "You have to know who you are and be the best at it."

From that moment, Windy Creek's focus narrowed—and strengthened—into what they now call a "power bull business." Every decision since has been made with that philosophy in mind: breeding, raising, developing, and selling Simmental bulls designed to add muscle, performance, and profitability.

CATTLE THAT WORK

Windy Creek recently hosted a fall female sale, but the operation is best known for its annual bull sale, held the first Sunday in March. Alongside friends Kevin and Amber Blagg and Travis and Sage Hofer, the group markets between 90

and 100 bulls each year.

Their cattle are recognized for their ability to influence other herds—bulls that don't just perform on paper but work where it matters. That reputation has grown steadily, one customer relationship at a time.

And relationships matter deeply to the Lehrmans.

INFLUENCED BY PEOPLE

The Windy Creek name itself was dreamt up in the back of a van while Jeremy was traveling with the SDSU Livestock Judging Team. A judging teammate, Scott Werning, became a lifelong friend and a key influence in Jeremy's early Simmental purchases. Over time, the Lehrmans added genetics from the Eichacker, Reimer, Kappes, Thomas, and Effling/Wager families—but more importantly, they added mentors and friends.

Those relationships have guided them at every step, and they continue to do so today.

One of Jeremy's most humbling moments came in 2021, when Steve

Reimer asked him to serve as an associate judge at the Simmental Pen Show during the National Western Stock Show.

"That was one of those moments that makes you stop and reflect," Jeremy says. "You realize how many people helped you get where you are."

And without people—customers, friends, mentors, family—cattle don't matter the same.

Family at the Center

People-first thinking extends well beyond customers and mentors—it begins at home.

The Lehrmans have two children: Cash, a sophomore in college studying animal science, and Emerson, a freshman in high school with aspirations in animal nutrition. Cash plans to return home after college, and his parents are already thinking about how the next generation will shape Windy Creek.

"We're rooted in raising and developing power bulls," Bethany says, "but Cash has a deeper interest in the female side of the business." Jeremy adds, "We won't

...Continued on page 64

BRINK
GENETICS
FULLBLOOD FLECKVIEH SIMMENTAL

SALE DATE:
MARCH 19TH, 2026
SELLING: ELITE FULL FLECKVIEH
YEARLING BULLS & FEMALES

CHECK OUT OUR WEBSITE FOR
PERFORMANCE & ULTRASOUND
DATA, ALONG WITH PICTURES,
VIDEOS AND ONLINE CATALOG:
WWW.BRINKGENETICS.COM

N574



DOB: 2/5/25 - ASA# 4544210 - POLLED
WW: 900 LBS - SIRE: BRINK POLL BP L350

N510



DOB: 1/8/25 - ASA# 4544160
WW: 800 LBS - SIRE: BRINK POSTER K201

- HIGH PERFORMING OFFSPRING -

23098 GUNDER RD, ELKADER, IA 52043
JERRY: 563-880-1470 • JBRINK@ALPINECOM.NET
PRESTON: 563-880-2075 • PRESTONBRINK@GMAIL.COM
WWW.BRINKGENETICS.COM

36TH YEAR OF SELLING FULLBLOOD FLECKVIEH.
100% DNA TESTED WITH GENETIC ENHANCED EPDS.
THANK YOU TO ALL OF OUR 2025 CUSTOMERS.
CHECK WEBSITE FOR PROGENY DATA!

SIRES INCLUDE:

3943783 KBHR HOMELANDER



SEMEN AVAILABLE FROM RIVER CREEK FARMS

CE	BW	WW	YW	STAY	MARB	REA	\$API	\$TI
13	-1.4	104	167	15	1.47	1.20	206	125

4104347 KBHR KEYNOTE



SEMEN AVAILABLE FROM ORIGIN

CE	BW	WW	YW	STAY	MARB	REA	\$API	\$TI
16	-5.0	88	137	24	1.26	0.60	231	120

4104220 KBHR CHARGER



SEMEN AVAILABLE FROM GENEX

CE	BW	WW	YW	STAY	MARB	REA	\$API	\$TI
17	-3.0	78	117	23	0.68	0.80	192	99

4387151 KBHR MONACO



SEMEN AVAILABLE FROM RIVER CREEK FARMS

CE	BW	WW	YW	STAY	MARB	REA	\$API	\$TI
9	1.2	121	190	16	1.26	1.24	195	128

KELLER BROKEN HEART RANCH



MARCH 5, 2026

120 HIGH-PERFORMANCE RED AND BLACK
SIMMENTAL AND SIMANGUS BULLS

1:00 PM AT THE RANCH IN MANDAN, ND

ALSO SELLING SONS OF:

Bridle Bit Galaxy, 4211420 - ES Jack Red, 4257936 - G A R Fireproof, 4171224
KBHR Discipline, 4224722 - KBHR Homestead, 3789403
KBHR Visionary, 4104341 - KBHR McIntock, 3943875
KBHR El Dorado, 3943885 - CLRS KRN Octane, 4186229
WS Jam-Packed, 3911959

BID LIVE ONLINE

DVAuction
Broadcasting Real-Time Auctions

LUKE AND KATY 701-471-1142

JAKE AND MACKENZIE 701-471-5065

DWIGHT AND SUSAN 701-471-5215

1573 55TH STREET, MANDAN, ND 58554

KBHR@WESTRIV.COM // KBHRSIMMENTAL.COM

LaBatte Simmentals 46TH Annual BULL SALE

WITH GUEST EAST POPLAR SIMMENTALS

90 & 15

RED, BLACK
+ FULL
BLOOD BULLS

OPEN
HEIFERS

FUNCTIONAL
PRODUCTIVE
PROFITABLE

IPU 4M
Barbarian (Polled)

IPU 94M
Caliber

*A SAMPLE OF OUR 2025 BULL SALE
OFFERING

Friday
MARCH 6 2026

JOHNSTONE AUCTION MART
MOOSE JAW, SK | ONLINE WITH DLMS

IPU 98M
El Dorado

Barry & Brenda LaBatte
Lynlee, Hayley, Brodyn, Jory & Zayne
LaBatte
Box 72, Gladmar, Sk, S0C 1A0
Barry: 306-815-7900
Brodyn: 306-815-7804
labatte.simm@sasktel.net
www.LaBatteSimmentals.ca



Kyron & Kelsey Manske
Box 456, Coronach, Sk,
S0H 0Z0
306-267-7530
east.poplar@hotmail.com



JANUARY 29, 2026

GLACIAL LAKES LIVESTOCK, WATERTOWN, SD • 1:00 PM

AVERAGE OF OFFERING **202 \$API** - **106 \$TI**



433M ASA 4448620

KBHR GUNSMOKE J131 x RRR JLN CONTESSA 86H

CE	WW	YW	MCE	STAY	MARB	REA	SAPI	STI
11	83	124	7	21	0.87	0.78	186	102



440M ASA 4448627

LBRS GENESIS G69 x CLRS GENOME 979G

CE	WW	YW	MCE	STAY	MARB	REA	SAPI	STI
11	90	148	7	18	1.28	0.92	208	118



461M ASA 4448547

CLRS JAY LENO 957J x TRIF CONQUEST 202K

CE	WW	YW	MCE	STAY	MARB	REA	SAPI	STI
17	80	124	10	22	1.09	0.78	215	112



478M ASA 4448564

TRIF KEV 226K x TRIF SABEL 220K

CE	WW	YW	MCE	STAY	MARB	REA	SAPI	STI
12	94	147	7	19	0.84	0.89	187	108



484M ASA 4448570

KBHR MR RED OCTOBER J108 x KRRS 253K

CE	WW	YW	MCE	STAY	MARB	REA	SAPI	STI
12	77	111	6	15	0.87	0.82	156	92



486M ASA 4448572

KBHR MR RED OCTOBER J108 x TRIF MS DEBUTANTE 240K

CE	WW	YW	MCE	STAY	MARB	REA	SAPI	STI
13	86	124	8	21	0.82	1.04	189	105

Selling 32 AGE-ADVANTAGE SIMMENTAL AND SIMANGUS BULLS

SIRES INCLUDE: LBRS Genesis - Gibbs Essential - KBHR Gunsmoke - TRIF Kip - TRIF Kev



Cody Kenyon
17615 480th Avenue, Clear Lake, SD 57226
605-880-8191
trifectacattle.com

Request a salebook on our website
or at the numbers listed.

BID LIVE ONLINE
DVAuction
Broadcasting Real-Time Auctions

ALLIED
GENETIC RESOURCES

Marty Ropp 406-581-7835
Corey Wilkins 256-590-2487
Jared Murnin 406-321-1542
www.alliedgeneticresources.com



Beginner Grant Winner: Holden Tostenson



Beginner Grant Winner: Sutton Lockhorst



Junior Grant Winner: Brooklyn Marshall

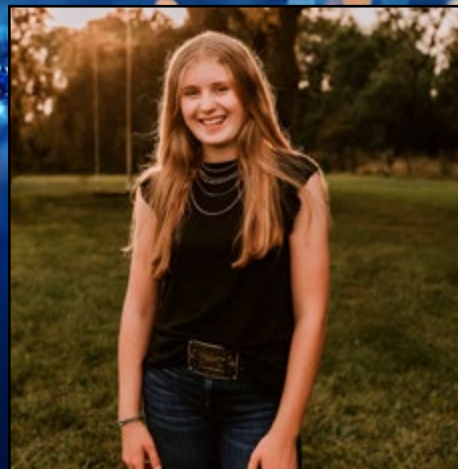
SOUTH DAKOTA SIMMENTAL ASSOCIATION AWARDS HEIFER GRANTS

The South Dakota Junior Simmental Heifer Grant Program is intended to provide quality Simmental heifers to youth interested in starting a herd, and to encourage youth to show and promote Simmental cattle. The heifers must be purchased from the 2025 SD Simmental Source Sale, the 2026 Watertown Winter Farm Show, or the 2026 Black Hills Stock Show. Heifers purchased from these sales are eligible to be shown in the 2026 Field Day Futurity Show.

New this year, juniors applying for this grant are required to complete an application. Applications are then judged by an outside party, and interviews are conducted with the juniors. A grant of \$500 will be awarded to two Beginner members (ages 8-10), two Junior members (ages 11-13), and two Senior members (ages 14-21). Grant winners must submit the Futurity Form by June 1st, 2025, to be eligible to show in the Futurity Show at our SDJSA Field Day at SD Summer Spotlight. After showing at the Futurity Show during the SDJSA Field Day, grant winners will receive an additional \$750 from the SD Simmental Association.



Junior Grant Winner: Mason Lockhorst



Senior Grant Winner: Natalie Marshall



Senior Grant Winner: Kailee Gosse

KAELBERER



Simmental Ranch

Selling 70 Bulls and 60 Heifers

Kist Livestock

Tuesday, February 10, 2026 @ 1:00 PM CST

"Our commitment to breeding high-performance cattle has not wavered in over 50 years!"



Previous Sale Standouts



Kaelberer Simmentals

4241 County Rd 85
New Salem, ND 58563
Conner Kaelberer 701-400-7323
Claye Kaelberer 701-220-3124



Springer SIMMENTALS



DVAuction
Enhancing Real Time Auction

SAT @ 1pm(CST)...FEB 7, 2026
Decorah Sale Barn, Decorah, IA



47 Years Balancing

EPDs, Actual Weights, Carcass Evaluation & Phenotype to
IMPROVE YOUR PROFIT LINE

N805 • PB SM • ASA# 4606078



Sire: SAS Shootin the Moon • MGS: R Plus Venom
Red power bulls on offer!!!

2179M • 1/2 SM 1/2 AN • ASA# 4434487



Sire: SAS Bitten F367 • MGS: Schiefelbein Druid
SimAngus™ bulls selling!!!

M206 • PB SM • ASA# 4537562



Sire: SRH Patriot • MGS: CCR Cowboy Cut
25 baldies selling including some calving ease!!!

N79 • PB SM • ASA# 4606103



Sire: Bridle Bit Resource • MGS: Erixon Bitten
Shares the same dam as the Shootin the Moon!!!

101M • PB SM • ASA# 4537557



Sire: SAS Shootin the Moon • MGS: Erixon Bitten
From the gorgeous and powerful Angel cow family!!!

Follow the Program

Selling - 80 Herd Improving Bulls • Bred & Open Females • Donor Females • Embryos

Jeff & Lynda Springer | Jeff: (641) 330-6654 or sprinsim@gmail.com

www.SPRINGERSIMMENTAL.com

*EPD as of 12/17/2025



Black Simmental & SimAngus™

38th Annual Production Sale

Selling 62 Yearling Bulls



LBR GENESIS G69 x MRL DISCOVERY 21A

BD: 2-5-25 BW: 80 WW: 954

CE	BW	WW	YW	MCE	Milk	MWW	API	TI
10.4	1.1	98	151	7.3	23.1	72.0	155	98

KOEPLIN'S BLACK SIMMENTALS

Tuesday, February 3, 2026
2:00pm CT • Kist Livestock • Mandan, ND



MRL BATTLECRY 2G x SAV ANGUS VALLEY 1867

BD: 2-17-25 BW: 96 WW: 920

CE	BW	WW	YW	MCE	Milk	MWW	API	TI
5.8	3.3	94	144	4.7	29.1	75.9	112	81



OMF EPIC E27 x MYTTY IN FOCUS

BD: 2-19-25 BW: 82 WW: 844

CE	BW	WW	YW	MCE	Milk	MWW	API	TI
10.7	0.2	82	124	7.4	27.6	68.7	133	82



MRL BATTLECRY 2G x BCLR CASH FLOW C820

BD: 2-3-25 BW: 87 WW: 946

CE	BW	WW	YW	MCE	Milk	MWW	API	TI
7.5	3.3	99	150	5.1	24.6	73.8	127	85



LBR GENESIS G69 x GW-WBF SUBSTANCE 820Y

BD: 2-22-25 BW: 93 WW: 960

CE	BW	WW	YW	MCE	Milk	MWW	API	TI
6.2	2.7	106	159	5.3	24.1	76.7	157	103

Terry & Marci Koeplin

7035 80th St SW • Elgin, ND 58533

Home: 701-584-3292 • Cell: 701-214-8212

koeplinranch@hotmail.com

Visitors are always welcome at the ranch!



Find us on:
facebook.



Where Friends Meet...

Sale will be broadcast online by

DVAuction
Broadcasting Real-Time Auctions

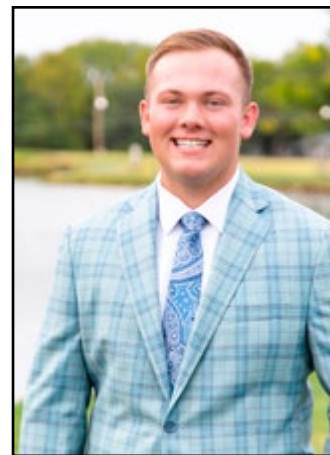
SOUTH DAKOTA JUNIOR SIMMENTAL ASSOCIATION AWARDS SCHOLARSHIPS



*SDJSA Scholarship Winner:
Josie Johnson*



*SDJSA Scholarship Winner:
Kerstynn Heim*



*Volz Family Scholarship
Winner, Drew Pederson*

Each year, SDJSA awards two \$500 scholarships to recipients that are graduating high school or currently enrolled in post-secondary education. These applicants must have been raised in a cattle operation and have an interest in Simmental cattle. Applicants are judged based on their involvement in SDJSA, AJSA, and the quality of their 500 word essay on "How Simmental cattle have affected my life."

- SDJSA Scholarship Winner: Josie Johnson
- SDJSA Scholarship Winner: Kerstynn Heim

VOLZ FAMILY SCHOLARSHIP

New this year, SDJSA has partnered with the John Volz Family to award one \$1000 Scholarship to a 2025-2026 collegiate Junior or Senior. Applicants must have been raised on a cattle operation and have an interest in Simmental cattle. Applicants must submit a resume, college transcript, and a 500-word essay regarding how Simmental cattle will shape their future. Applicants will be judged on their resume, transcript, essay and their involvement in SDJSA and AJSA.

- Volz Family Scholarship Winner: Drew Pederson



THE RIGHT CHOICE

Production Sale




SATURDAY, FEBRUARY 21, 2026

1PM | HUB CITY LIVESTOCK | ABERDEEN, SD | DVAUCTION

Offering 125+ Lots of Simmental, SimAngus™, and Red Angus Bulls and Females

New Sale Name - Same Quality Genetics!

SCHNABEL RANCH SIMMENTALS // Tom & Meghan Schnabel // 605.380.2811 // 605.577.6286 // www.srsimms.com

LAZY J BAR RANCH // John & Stephanie Jung // 605.228.1743 // 605.380.1796 // www.lazyjbarranch.com

WHERE PHENOTYPE & POWER JOIN FORCES

C DIAMOND

S I M M E N T A L S

FEBRUARY 25, 2026 ♦ 1PM ♦ DAWSON, ND

SELLING 100 BLACK & RED SIMMENTAL YEARLING BULLS



408N ♦ ASA# 4582422 ♦ PB SM ♦ ADJ WW: 807
CDI JERICO 291J x CDI MS TRUSTEE 48H



359N ♦ ASA# 4582374 ♦ PB SM ♦ ADJ WW: 798
CDI ENTICE 49L x CDI MS ABUNDANCE 57F



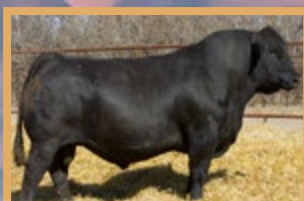
357N ♦ ASA# 4582372 ♦ ADJ WW 773 ♦ 1/2 SM 1/2 AN
BALDRIDGE MOVIN ON G780 x CDI MS LEGENDARY 67H



439N ♦ ASA# 4582451 ♦ PB SM ♦ ADJ WW: 782
MADER WALK THE LINE 92J x CDI ABUNDANCE 373L



CDI BENCHMARK 81L (15 sons sell)



LCDR RETRO 14K (10 sons sell)



LCDR AFFIRMED 212H (10 sons sell)



LCDR BLACK KNIGHT 262L (10 sons sell)

DVAuction
Broadcasting Real-Time Auctions

C DIAMOND SIMMENTALS ♦ 4720 34TH AVE SE ♦ DAWSON, ND 58428

NEIL & CARMEN NICHOLSON

CDIAMOND@BEKTEL.COM

WESLEY & KELSEY NICHOLSON

701-391-6205

f C DIAMOND SIMMENTALS

701-391-2838

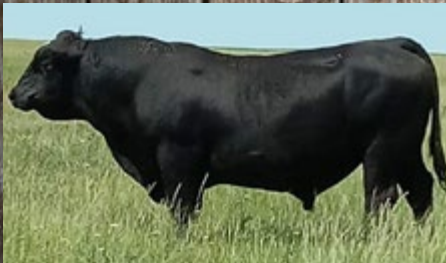
Sorenson ranch

Your source for composite *Simmental*
bulls that are bred for:

Docility
Longevity
Fertility

& Calves that PUSH DOWN the Scale
Average Actual Birth Weight: 80lbs
Average Adjusted 205: 756lbs

Reference Sires:



BDV GB Ignite 173F - ASA# 3553934



KECH Mr. 875 - ASA# 3836635



Ellingson Turnpike K252 - ASA# 4088856



HABR Eagle K201 - ASA# 4091829



Tehama Tahoe B767 - ASA# 3396482

ADDITIONAL REFERENCE SIRES:

LBS BRICKHOUSE H44 -

ASA# 4163960

JC MR PONTIAC D114K -

ASA# 4029546

G A TARGET 305 -

ASA# 4605409

New & Upcoming Sires:



QB Ironman K42 - ASA# 4117023



Bridle Bit GPS H078 - ASA# 3724830

Join Us:

MARCH 4TH, 2026

2PM CST - SIDNEY LIVESTOCK MARKET CENTER - SIDNEY, MT
FREE FEEDING - FREE DELIVERY WITHIN 500 MILES

Selling:

60 SIMMANGUS BULLS
60 COMMERCIAL OPEN HEIFERS
10 BRED AGED COWS
10 OPEN REGISTERED HEIFERS
5 BRED REGISTERED HEIFERS

FREE FEEDING AND DELIVERY OFFERED FROM SALE DAY TO WHEN BULL(S) ARE DELIVERED. BULLS WILL BE FED FREE OF CHARGE, GUARANTEED SEMEN TESTED, AND DELIVERED BY APPROXIMATELY JUNE 1ST.

**Sorenson
Ranch**

Loren Sorenson: (701) 641-1140 or Deidra Sorenson: (701) 641-6999
Grenora, ND e-mail: lsorenson2627@gmail.com
Check us out on Facebook: Sorenson Ranch
www.sorensonranch.com

This sale will be broadcast live on the internet.
DVAuction
Broadcasting Real-Time Auctions
Real time bidding & proxy bidding available.

EXPLORE OUR LEGACY OF QUALITY PUTTIN' BEEF WHERE IT COUNTS, IN YOUR POCKET BOOK!

ANNUAL BULL SALE • FEBRUARY 7, 2026 • KIMBALL, SD

LOOK FOR PROGENY OUT OF THESE GREAT SIRES



DJF PALISADES J170

PB SM - ASA# 3929091 - Homo Black - Homo Polled
EPDs CE 9.2 BW 1.9 WW 86.3 YW 142.2 ADG 0.35
MCE 9.2 MM 17.1 MWW 60.2 API 123.2 TI 80.8



EKR MONTE CARLO 945K

PB SM - ASA# 4131737 - Black - Homo Polled
EPDs CE 5.8 BW 3.6 WW 106.1 YW 165.7 ADG 0.37
MCE 5.9 MM 23.7 MWW 76.6 API 122.3 TI 89.2



NUG ROYAL RED 324A

PB SM - ASA# 2986378 - Red - Polled
EPDs CE 1.1 BW 5.0 WW 75.0 YW 110.7 ADG 0.22
MCE 0.2 MM 13.7 MWW 51.1 API 79.3 TI 65.2

SOUTH DAKOTA'S SOURCE FOR OUTCROSS PERFORMANCE SIMMENTALS FOR OVER 55 YEARS!

EKSTRUM

RAISING
SIMMENTALS
SINCE 1970



EKSTRUM SIMMENTALS & SIMGENETICS

Clay Ekstrum: (H) 605-778-6185 / (C) 605-730-1511 | John Ekstrum: 605-778-6414
36220 257th St. Kimball, SD 57355 | Email: clayekstrum@midstatesd.net

Find us on Facebook: Ekstrum Simmentals

WWW.EKSTRUMSIMMENTALS.COM

Videos online & live sale broadcast at www.dvauction.com

DVAuction
Broadcasting Real Time Auctions



EPDs AS OF 12/12/25

WHY A QUANDT BULL?

Higher **PWG** than the ASA Average Across Nearly 20 Years of Evaluation

GE-EPDs That Provide More **Accurate Data**

Quandt Daughters are Built to **Stay in Production**

Quandt Bulls **Push Performance** and **Elevate Payweights**

As one of just 41 Dedicated Performance Advocates nationwide and one of only three in North Dakota, Quandt Cattle Co. ranks among the top performers in the Total Herd Enrollment program. Our commitment to **accurate, complete data** gives producers reliable information to make confident long term genetic decisions. Genomic testing simply provides increased confidence, as cattle backed by GE EPDs and complete phenotypic reporting offer the most **predictive and data driven insight** available in today's beef industry.

Quandt cattle consistently exceed the ASA average for Post Weaning Gain across nearly 20 years of evaluation. Quandt bulls **drive performance and higher payweights**, while Quandt daughters are built for **longevity**, helping reduce turnover and improve profitability for commercial operations.





QB DISTINCTION M03
*Owners: Crosshair Simmentals
& TNT Simmentals*



QB PORTFOLIO M62
*Owner: Goss Performance
Simmentals*



QB BENCHPRESS L32
Owner: Werning Cattle Co.

Bulls like these sell!
**14TH ANNUAL
PRODUCTION SALE
02/17/26**

1 PM | OAKES, ND | ONLINE BIDDING THROUGH DVAUCTION.

WWW.QUANDTBROTHERS.COM



CONTACT US

JASON QUANDT
701.710.0080

GABE QUANDT
701.408.9154

10861 88TH ST. SE,
OAKES, ND 58474



**FIND US ON
FACEBOOK
QUANDT CATTLE
COMPANY**

SALE CREDIT

Receive **\$100 sale credit** if you view the bulls in person prior to Sunday, February 15, 2026.

CATALOG REQUEST



SIT DOWN WITH ND SIMMENTAL ASSOCIATION PRESIDENT LYNDON HOIBY

Tell us about yourself, your family and your farm/ranch?

My name is Lyndon Hoiby, and I have been married to my wife, Shelley, for 35 years. We have two children, Paige Reid and Levi Hoiby. Paige is married to Mike Reid, and together they have a two-year-old daughter named River. Paige farms and ranches on the family operation while also running her own enterprise. Levi currently lives and works in Fargo and will soon be married. He plans to return home to the family farm next year.

We operate a purebred Simmental and SimAngus cattle operation and host our annual bull sale on the third Saturday of February, with this year marking our 23th annual sale. In addition to our livestock operation we grain farm, raising durum, canola, peas, lentils, silage corn, and alfalfa.

"The future of the Simmental breed looks very strong. The breed continues to improve through better genetics and remain valuable for both purebred and commercial cattle operations."

- Lyndon Hoiby



How did you get your start in the Simmental breed?

I got my start in the Simmental breed by buying my first Simmental heifer while in High School from Ross L7 in Canada and I built my herd from there.

What do you think are the biggest benefits of the Simmental breed?

The biggest benefits of the Simmental breed are the mating flexibility it provides in a crossbreeding program. Simmental add growth, performance, and maternal strength while creating strong crossbred advantages, resulting in efficient, high marketable cattle.

What are the biggest challenges that you see for Simmental breeders?

One of the biggest challenges in the Simmental business is overcoming

...Continued on page 38



Hoiby Simmental Bulnanza

Northwest
North Dakota's
Source for
Simmental &
SimAngus™ Genetics!

Saturday,
FEBRUARY 21, 2026

1 p.m. CST • McGregor, North Dakota

At the ranch in the heated sale barn.

Please join us for a pre-sale lunch!

Selling:
40 BLACK & RED BULLS

10 BLACK & RED BRED HEIFERS

10 BLACK & RED OPEN HEIFERS

*Simmental & SimAngus™
Black and Red*



**MRL BATTLECRY X HOOKS BEACON
PUREBRED**

CE	BW	WW	YW	MCE	M	MWW	API	TI
9	1.7	87	133	6	30	73	139	86



**KWA HOT SHOT X SDS GRADUATE
3/4 SIMMENTAL 1/4 ANGUS**

CE	BW	WW	YW	MCE	M	MWW	API	TI
13	-0.2	84	126	8	27	68	131	82



**CCR GALILEO X PF SLING SHOT
5/8 SIMMENTAL 3/8 ANGUS**

CE	BW	WW	YW	MCE	M	MWW	API	TI
7	1.8	71	114	5	25	67	133	76



**PF TAHOE X MRL CHISEL
1/2 SIMMENTAL 1/2 ANGUS**

CE	BW	WW	YW	MCE	M	MWW	API	TI
11	0.4	79	120	6	30	72	128	80



**CDI/NF HONOR GUARD X GW/SCC CARRY ON
PUREBRED**

CE	BW	WW	YW	MCE	M	MWW	API	TI
14	-0.8	80	126	8	24	63	150	88



**KBHR BOLD RULER X MRL MAX
PUREBRED**

CE	BW	WW	YW	MCE	M	MWW	API	TI
13	-0.2	82	124	8	30	71	164	93

Bulls pictured at 8-9 months of age. EPDs as of 12-9-25.

HOIBY SIMMENTAL RANCH

Lyndon & Shelley Hoiby • Paige Reid • Levi Hoiby

7890 101st Ave NW • McGregor, ND 58755

Home: 701-546-4043

Lyndon: 701-641-1083 • Paige: 701-641-9938

DVAuction
Broadcasting Real-Time Auctions



hoibysim@nccray.com

hoibysimmentalranh.com

Hoiiby, Cont'd from page 36

outdated perceptions about the breed. While modern Simmental offer calving ease, carcass quality, and strong maternal traits, some buyers still associate the breed with larger birth weights. Another challenge is convincing commercial cattlemen of the value Simmental bring to crossbreeding programs, including added growth, efficiency, and marketability.

What is your favorite part of the livestock business?

My favorite part about the livestock business is the people you meet throughout the industry. Building relationships, learning from others, and sharing a common passion for agriculture makes the business especially rewarding.

What is your least favorite job on the farm or ranch?

My least favorite job on the ranch would have to be fixing fence after a long winter.

Why did you decide to get involved in the ND Simmental Association?

I joined the American Simmental Association and the North Dakota Simmental Association in 1983 to learn more about the Simmental breed and to connect with fellow Simmental breeders in North Dakota.

What would you tell someone to encourage them to get involved in the Association?

I would encourage anyone to get involved in the association. It's a great learning experience and a wonderful group of people, many of whom become lifelong friends.

What does the future look like for the Simmental breed?

The future of the Simmental breed looks very strong. The breed continues to improve through better genetics and remain valuable for both purebred and commercial cattle operations.



BATA BROTHERS SIMMENTALS

29th Annual Sale

Selling with Silver Dollar Simmentals on

FEBRUARY 6, 2026 • 1:00 pm

Rugby Livestock Auction, Rugby, ND

Selling 5 Yearling Bulls • 1 Elite Bred Heifer



**Bata Brothers
Simmentals**

Mark Bata: 701-331-3055

Hudson, Leo and Harris Bata

6322 Hwy 35, Adams, ND

Facebook @BataBrothersSimmentals



BBS N3 ASA# 4520056

RF Caliber 014G X R Plus Uppercut

Adj. WW 925 • Adj. YW 1625



BBS N4 ASA # 4520057

CKCC LD Dimension X SRH Hannibal

Adj. WW 813 • Adj. YW 1382

SILVER DOLLAR SIMMENTALS 2ND ANNUAL
PRODUCTION SALE
Friday, February 6, 2026



Rendezvous Freedom 125K X Rendezvous Crocus 270J
ASA # 4610304 | BW 106 | ADJ. WW 785



QB Marvel J58 X BBS Tundra F839
ASA # 4454438 | BW 95 | ADJ. WW 776



SKORS Blackjack X BBS Miss Riddler G920
ASA # 4454457 | Bred to BBS Thunder Struck K1



TT Judson 933J X BBS Kelly K292
ASA # 4580858 | BW 100 | ADJ. WW 794



MAF Boost 112 X BBS Redman D6
ASA # 4454475 | BW 81 | ADJ. WW 702



W/C Bank on It 273H X Ellingson Ms Rock F8024
ASA # 4454409 | Bred to BBS Thunder Struck K1

Selling Approximately 24 Yearling Bulls, 15 Advanced Age Bulls, and 5 Bred Heifers.

Rugby Livestock Auction | Rugby, ND | 1:00 PM (CST) | Online Bidding Through DVAuction



Jaedyn Pesek 701-331-2379 | **Eric Haugland** 701-270-9695 | **Dale Pesek** 701-360-0642
11287 61st ST. NE • Lawton, ND | Find us on Facebook @SilverDollarSimmentals

HARL NAMED PROMOTER OF THE YEAR BY NORTH DAKOTA SIMMENTAL ASSOCIATION

By Davis Kinn

We are always very honored to present the North Dakota Simmental Association's Promoter of the Year award. This honor is never achieved by being the top dog during a period of one year. It comes with consistently setting a high level of professionalism over many years in our industry. There are many different avenues within our industry that play essential roles in its success. We are very honored to recognize an individual who excels in a key role and has been a pillar to our success representing not only our state, but the entire nation in promoting the Simmental industry.

Our recipient grew up in a purebred livestock family and had the opportunity to grow up attending several seedstock sales. The auction was always something that held his interest. As a sophomore in high school, he attended auction school in Decatur, Illinois. He auctioneered his first purebred sale at 18 years of age and realized that he wanted it to be his profession. He was fortunate that a few breeders like Erroll Cook, Jim Burns, Denny Benoodt, Cam Treeby, & Jim Nickeson put him behind the microphone early in his career. In that time, he remembers the campaign slogan "Breed Em All Simmental" with the dominant sires of that time being Signal, Bismarck, Lacombe Achilles, & Double Time.

He has been the auctioneer at our state sale for as long as most can remember. He was asked to come up in the early 80's to do the sale and has been back every year since. He remembers Orville Deckert and Roger Finke being on the state board when he was first hired to come up. He also reflected on how North Dakota is full of Simmental history and that he has been a witness to the progress that North Dakota breeders have made which allows them to continue being one of the nation's leaders in the Simmental industry.

One of the biggest changes he has seen that helped us better market our product over his career is when we started using television screens and the internet to broadcast the sales "Worldwide". He stated that "We no longer need to beg the



ND Simmental Breeder Davis Kinn presents the ND Simmental Association Promoter of the Year Award to Auctioneer Tracy Harl.

neighbors to come and help out on sale day." He also believes that in using all the data we now provide to our customers we have strengthened our market share with the commercial cattlemen & cattlemen, making it a more educated platform to promote the Simmental breed.

He has gone on to consistently be one of the nation's top seedstock auctioneers. He currently travels over 50,000 miles, selling over 8,000 head of seedstock cattle per year. This has brought him to develop many relationships with some of the best families in this agricultural arena.

There have always been industry leaders that we look up to who exemplify high standards. The feeling that you get when you work with one of these coveted professionals never goes away. It makes you want to be better and be able to pass that same level of sincerity on to everyone you work with. Our recipient is one of these leaders and is one of the reasons that we have such a great community that looks up to leaders like him. It creates a culture in which we want to be surrounded by people like him. He had one comment that really sticks out and is just a great example of his professionalism and humbleness.

"I have been blessed to have the support of many Simmental breeders across this country, and I am so thankful for their trust and friendships."

Congratulations to Tracy Harl our 2025 North Dakota Simmental Association's Promoter of the Year recipient.



TNT SIMMENTALS

41ST ANNUAL "CARRYING ON" THE EXPLOSIVE DIFFERENCE SALE
Friday, FEBRUARY 13, 2026
 1 p.m. CST • At the ERBELE RANCH, Lehr, ND

Your **COMMERCIAL BULL HEADQUARTERS**, along with **BREED-LEADING HERDSIRES!**
 They are **THICK and DEEP** – All backed by the **TNT 100% GUARANTEE!**

DVAuction
 Broadcasting Real-Time Auctions

Selling **135 Bulls**
 Simmental, SimAngus™ & Red Angus

Selling **70 Registered Bred Heifers**
 For the First Time In Over 30 years!



TNT Plateau L683 x Gibbs 7382E Broad Range
 Extreme Heifer Bull!



TNT Assurance J455 x Rymo Extra Up U60D
 Tons of Power and Length!



Baldrige Badger x TNT Tanker U263
 Prolific Cow Family! 4 Flushmates Sell



CDI Elevation 302K x LMG Gills Indeed 4736



TNT Front Runner K609 x TNT Prodigy B366



TNT Dozer F439 x IR Imperial D948



TNT Plateau L683 x TNT BCR Unified B203
 Exceptional Dam!



Clemson Elite 41J x Gibbs 7056E S. Comfort
 Prolific Cow Family!



MR NLC Testament 2661K x TNT Defender F405
 Tons of Power and Length!

TNT SIMMENTAL RANCH

Shanon & Gabe Erbele
 6471 51st Ave SE • Lehr, ND 58460 (701) 527-5885 (Shanon's cell)
 (701) 426-9445 (Gabe's cell) gserbele@hotmail.com

Kevin & Lynette Thompson
 5125 53rd St • Almont, ND 58520-9731 (701) 391-1631 (Kevin's cell)
 (701) 843-8454 kevinandlynette@westriv.com

Contact us for
 a **catalog!**



Bulls viewable anytime at the **Erbele Ranch, 30 m. S of I-94 Exit 228** • Videos & photos at **tntsimmentals.com** and **DVAuction.com**

- Volume discounts!
- Performance data and genomic-enhanced EPDs!
- No creep feed!
- Majority homozygous polled!
- All reds are non-diluters!
- All blacks will be homozygous- or heterozygous-black verified!

GENETICS SELECTED WITH ONE GOAL IN MIND: **DRIVING PROFIT FORWARD.**

PERFORMANCE-PROFIT-PEACE OF MIND

ANNUAL GENETICS WITH VISION PRODUCTION SALE

FEBRUARY 14, 2026 • AT THE FARM, CLEARBROOK, MN

OFFERING YEARLING & 18-MONTH-OLD BULLS, BRED AND OPEN FEMALES



API 210.1 - TI 122.6

BRIDLE BIT PRELUDE L372

PUREBRED SIMMENTAL | ASA# 4211431

LBR5 GENESIS G69 x COLORADO BRIDLE BIT E752

Our high selling pick from Bridle Bit Simmentals



API 185.8 - TI 109.8

WS I LOVE LUCY L2

PUREBRED SIMMENTAL | ASA# 4231604

MR SR RED OCTOBER G1761 x WS FAST FORWARD J30

Our high selling pick from Wilkinson Simmentals

OFFERING EMBRYOS & PROGENY BY THESE ELITE DONORS!



API 185.9 - TI 99.4

RFS CREDENTIALS L49

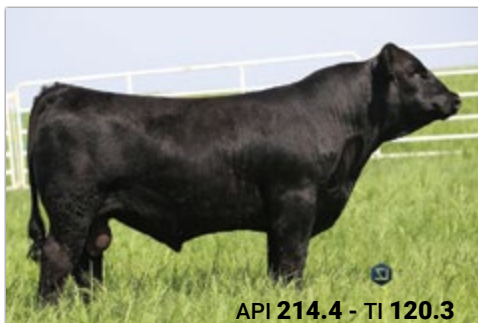
PUREBRED SIMMENTAL | ASA# 4220296

GIBBS 9114G ESSENTIAL x KBHR MEDORA G132

SELLING BULLS AND FEMALES BY
THIS UPCOMING SIRE!

CALVING EASE + CARCASS

TOP 2% MCE - API TOP 3% CE - BW - MARB TOP 10% TI



API 214.4 - TI 120.3

TRIF BREAKAWAY 206K

PUREBRED SIMMENTAL | ASA# 4115566

HOOK'S GALILEO 210G x WS PROCLAMATION E202

CALVING EASE SIRE WITH GREAT PERFORMANCE!

GROWTH + PERFORMANCE

TOP 1% MARB - API - TI TOP 5% MCE - MWW

TOP 10% BW - MILK



API 183.0 - TI 100.0

CLRS/KRN OCTANE 979L

3/4 SM 1/4 AN | ASA# 4186229

CLRS JAY LENO 957J x CLRS GENOME 979G

SELLING PROGENY BY THIS RED, OUTCROSS SIRE!

CARCASS + MATERNAL

TOP 2% MARB TOP 3% API TOP 10% STAY - REA - TI



VISIT OUR WEBSITE TO JOIN OUR MAILING LIST TODAY
47499 199th Ave, Clearbrook, MN 56634 | rydeen@gvtel.com
Paul: 218-280-1916 | Justis: 218-280-2032 | Rydeen Farms



BID ONLINE! **DVAuction**
Broadcasting Real Time Auctions

WWW.RYDEENFARMS.COM

Rydeen Farms
SINCE 1897
Polled Red & Black Simmental Cattle

GOEKEN CATTLE

45th Annual Bull Sale
Selling 60 bulls

STRONG-AGE • SIMMENTAL • SIMANGUS • ANGUS
Coming two year-old & 16 month-old bulls



JOHN & SUSAN GOEKEN

30139 435th Ave., Utica, SD 57067

Aaron (605) 660-4301 - John (605) 364-7432

Nathan (605) 660-9626

goekencattle@goldenwest.net

MONDAY, JANUARY 26TH 2026 - 1 P.M.

UTICA HALL - UTICA, SD - NEW LOCATION

COME EARLY SALE DAY TO VIEW THE BULLS AT THE FARM, THEN JOIN US FOR
LUNCH AND BULL AUCTION AT OUR NEW LOCATION, UTICA HALL!

Reference Sires:

SAS Antidote, W/C Bankroll 811, WINC Revolution 123J, MAF Stunner 294,
JMG Power Chip 945J, JMG Yellowstone 2156K, WINC Revolution 119J,
JMG Balboa 5510, Rubys Turnpike 771E, STAG Good Times 201,
KR Synergy



BULLS CAN BE VIEWED PRIOR TO ANYTIME BEFORE THE SALE

Auctioneer: Dan Koupal 605-491-1331

RANDY SCHULTZ NAMED COMMERCIAL CATTLEMAN OF THE YEAR

By Jason Quandt

Schultz's story began in 1988, when he started as a first-generation producer renting 700 acres near McLeod. With a \$10,000 loan from his dad, he bought his first 160 cows and set out to build a ranch of his own. In 1993, he was able to purchase that land, and over time he added neighboring acres growing it into the 300-head operation it is today.



His passion for cattle goes back even further, back to 1979, when he first saw the difference good Simmental genetics could make. Since 1990, he has been breeding and keeping his own heifers, always focusing on strong maternal traits and high-quality calves. The ranch background calves to around 750–800 pounds, breeds heifers that meet their standards, and markets steers locally each February.

But beyond the numbers, what stands out most is his commitment behind it all—the day-after-day dedication it takes to build a ranch from scratch and keep it moving forward. Now, that legacy is continuing as his great-nephew Hunter and his wife step into the operation and prepare to take over ownership.

Congratulations to Randy Schultz, the 2025 North Dakota Commercial Cattleman of the Year



ND Simmental Breeder Jason Quandt presents the ND Simmental Association's Commercial Cattleman of the year award to McLeod-area rancher Randy Schultz





www.healysimmental.com

Selling 70 bulls

Annual Bull Sale

February 6th, 2026 • 1 p.m.

Stockmen's Livestock, Yankton, South Dakota



Kevin & Simon Healy
Irene, South Dakota

Kevin 605-660-3880
Simon 605-661-3588

Please Join Us!

Eichacker Simmentals

SAVE THE DATE:
FRIDAY, MARCH 6TH
1:00 PM

2026 ANNUAL PRODUCTION SALE
AT THE EICHACKER SIMMENTAL FARM, SALEM, SD

CHANGE IN FORMAT!

*"LADIES FIRST" – Selling Heifers at 1pm
Followed by Simmental Bulls
Then the JK Angus Bulls*

BRINGING YOU NEW GENETICS TO YOUR HERD!

SIRES INCLUDE:

**Bridle Bit Recharge *CLRS King James
*GW Medicine Man *ES Jack Red *LCDR Diligence*

Steve & Cathy Eichacker Home 605-425-2391 Cell 605-421-1152

Adam Eichacker 605-421-0554

Guest Breeder: JK Angus, Billy Kapperman 605-940-2504 & Ross Hoefker 605-359-5022

Sale Managers:
Eberspacher Enterprises Inc.
Val's Cell 612-805-7405
sales@ebersale.com

**Contact us for information and to be
included on our catalog mailing list!**

Catalog will be online at www.ebersale.com



PREMIUM Beef

BULL & FEMALE SALE

March 8 2026

At Ag-Land Farms | Kenton, MB



BOHRSON
MARKETING SERVICES

D L M S
www.dlms.ca



DMJ 3N - Selling in Premium Beef 2026
DMJ War Zone 13H x PWK Black Odin 38C 57E



NRD 53M - Sold in 2025
to S Lazy A Ranching



SBSF Red Carhartt 33M - 2025 High Seller
to James Richter for \$11,250



DMJ 53N - Selling in Premium Beef 2026
BEE Alpha 915J x Mader Walk The Line 92J



NRD 21M - Sold in 2025
to Calvin Reykdal



SBSF Cobalt 24M - Sold in 2025
to Leonard & Joyce Benfield for \$10,000

AG-LAND FARMS

Dana, Megan & Terron Johns
Dana 204.365.7149
Greg & Allyson Workman
Greg 204.724.0564

BERT'S NR SIMMENTALS

Norbert, Pam, Sam, & Nathan de Rocquigny
Norbert 204.745.7930

MCCOLL SIMMENTALS

SCHWEITZER SIMMENTALS

Brodie, Stacey, Kolbie & Sierra McColl
Brodie 306.452.8558
Cam & Myrna Schweitzer
Cam 204.365.6092 **Myrna** 204.365.7307



ANNUAL PRODUCTION SALE
**Wednesday,
Feb. 11, 2026**

1 p.m. • At the Ranch • Douglas, N.D.
Join us for lunch at 11 a.m.

selling **50** Red & Black
Simmental & SimAngus™ Bulls

Call, e-mail, text or check our website for more information or to request a catalog!

Gary Sys: (701) 509-1154 • Derek Sys: (701) 509-5870

E-mail: dj.sys@hotmail.com • www.SysSimmentals.com

This sale will be broadcast live on the internet.
DVAuction
Broadcasting Real-Time Auctions
Real time bidding & proxy bidding available.

Watch for our consignments to the ND Simmental Assoc. Classic and the Northwest Select Simmental Sale!

ULMER RECEIVES ND SIMMENTAL ASSOC. PIONEER AWARD

By Kelly Hanson

North Dakota Simmental Association honored Steve Ulmer as the 2025 Pioneer of the Year Award. His hard work and dedication have made a lasting impact on the Simmental breed in North Dakota. Ulmer has spent decades helping grow the breed, supporting young people, and setting a high standard for others to follow. When asked what he enjoyed most about being involved with the Simmentals breed, he said it was the people he's met and the places he's been able to go to.

He was proud to be one of the first to exhibit North Dakota Simmentals at major stock shows, and he helped start the ND Junior Heifer and Steer Show at the State Fair to get more kids involved. Some of his favorite memories include meeting great people, winning shows, and having others ask for his opinion and advice. He first chose Simmentals because of the open herd book and the chance to move up quickly. He was also tired of showing Herefords and getting beat—and after hearing negative comments about Simmentals, he wanted to prove people wrong. And he did.

He loved the competitiveness of showing and clipping cattle and worked hard to make each animal look its best. Getting involved in the club calf business took his skills even further, with priceless knowledge gained from Orin Lamport and Ron Bruns and many others. He raised cattle and clipped for over 40 years, with one year topping more than 600 head.

In 2022, after being diagnosed with cancer, he decided it was time to put the clippers down and cheer on others instead. His advice to future pioneers is simple: stick to your path but be willing to adjust. Go to college, get involved, and build connections—they'll last a lifetime. And, of course, "just go to NDSU—even if UND is an option."

One lesson he hopes to pass on is that if you work hard enough, you can accomplish anything. His career proves that, including breeding seven champion Simmental steers at seven different state fairs and so many more accomplishments. Congratulations to Steve Ulmer (Beak) as the North Dakota Simmental Association's 2025 Pioneer of the Year.



ND Simmental Breeder Kelly Hanson presents the ND Simmental Association's Pioneer Award to Steve Ulmer



**"STICK TO YOUR PATH,
BUT BE WILLING TO
ADJUST..."**

- Steve Ulmer



30TH ANNUAL PRODUCTION SALE
FEBRUARY 14, 2026 1:00 PM CST / AT THE RANCH / LEEDS, ND
Selling 120 Bulls & 84 Bred Females / Black & Red - Purebred, SimAngus & Red Angus
Also selling groups of open commercial replacement heifers from customers

NO EXTREMES

COMMITTED TO

Balance

WE PRIORITIZE FINDING THE BALANCE
BETWEEN DATA & PHENOTYPE FOR GENETICS
THAT WILL IMPROVE YOUR BOTTOM LINE.

N809 bull calf with his dam (KS Vanderbilt x KS Elsie E820) on summer pasture.



N56 - 3/4 SimAngus

BCLR Bond K9161 x STRA Admiral
EPDs 9 -1.4 93 139 6 29 75 API 141 TI 91



N143 - 1/2 SimAngus

KS Caymus x KS Kamila K306
EPDs 16 -1.3 84 127 11 22 64 API 156 TI 87



N684 - PB

LCDR Diligence x KS Jolie J2800
EPDs 10 1.3 98 152 5 27 76 API 149 TI 94



N997 - PB

BCLR Pursuit K385 x Mr GD Triple Crown
EPDs 6 2.9 95 151 5 28 75 API 134 TI 89



N386 - PB

KS Net Income x BBS Meatball
EPDs 14 -1.4 70 120 9 29 64 API 150 TI 82



M610 - 3/4 SimAngus

Clemson Elite x SRF Miss 940G (Cowboy Cut)
EPDs 11 3.3 97 154 6 16 64 API 111 TI 79
Bred to TA Showman 2467 (PB AN)

ENTER TO WIN!

Visit the farm to view the sale offering from December 1st through February 13th to be entered to win a **\$500 SALE CREDIT** to be used at our 2026 production sale!

12/9/25 EPDs: CE BW WW YW MCE Milk MWW API TI



Roger, Jeanette & Erika Kenner / 5606 57th St NE Leeds, ND 58346
Erika 406-581-1188 / Roger 701-466-2800
Herdsmen, Bryan Leapoldt 701-466-2553 • C. 701-739-8764
erika.kenner@gmail.com

WWW.KENNERSIMMENTAL.COM

DVAuction Videos Online DVAuctions by Mid-January



MORE HIGHLIGHTS FROM THE ND SIMMENTAL ASSOCIATION'S ANNUAL BANQUET



ND Simmental Association Board of Directors from left to right, Trey Klain, Derek Sys, Wyatt Hansen, Lyndon Hoiby, Jason Quandt, Matt Kline, Jaxon Deckert and Ethan Steffan.



Wyatt and Sarah Hansen organize the kids coloring contest awards.



Kids Coloring Contest Award Winners, always a challenge to get a photo.



Carter Sys presents an item on the Junior Fundraising Auction to Jaxon Deckert



Bill Begger once again served as the auctioneer for the Jr Fundraising Auction.

Where 50 years of genetics meet your future.



CHSR THOR 152J
#3956260 | Sire: KS VANDERBILT G220
Purebred Simmental | API: 152.2 · TI: 91.3



DSR DAGO K14
#4085684 | Sire: BRIDLE BIT RED ROCK G9124
5/8 SM 1/4 AR 1/8 AN | API: 140.7 · TI: 92.8

*Deckert
Simmental
Ranch
is the exclusive
source for
progeny from
these sires.*



GW REBEL YELL 731J
#3875016 | Sire: GW MOVIN ON 183C
1/2 SM 5/16 AR 3/16 AN | API: 166.4 · TI: 93.2



TJ 652L
#4216835 | Sire: KBHR BOLD RULER H152
Purebred Simmental | API: 165.2 · TI: 96.5

EPDs as of 12-2-25

50 *Annual Production Sale*
Tuesday,
February 24, 2026

Sale: 2 p.m. CST · At the Ranch

Selling:

50 Yearling Bulls · 20 Bred Heifers

DVAuction
Broadcasting Real-Time Auctions

Request
a Catalog



DECKERT
Simmental Ranch

Justin and Carrie Deckert: (701) 425-6673
Jaxon Deckert: (701) 425-5882
24952 392nd St NE · Arena, ND 58494
dsrcows@bektel.com

*Connect
with us!*



**Deckert
Simmental Ranch**



02.07.26

Klain Simmental Ranch Production Sale

44th Annual - Ruso, ND



- LCDR Diligence -

Progeny From:



- Clemson Elite -

Selling:

40 Yearling Simmental & SimAngus™ Bulls
10 Registered Bred Heifers
5 Registered Open Heifers

Lots available for viewing at any time



Scan to sign up for a catalog

klainsimmentalranch.com

Trey Klain: 701-531-2008

Durnell Klain: 701-720-1316



KSR 167N

#4580932 - 3/1/2025

Purebred Simmental • Hetero-Black, Homo-Polled
LTS HOTZ TOP SHELF 5J x KSR CRYSTAL 167H

Act. BW	95	Adj. WW	736
---------	----	---------	-----



KSR 288N

#4580967 - 2/20/2025

Purebred Simmental • Homo-Black, Homo-Polled
LCOR DILIGENCE 215J x KSR JOEY 288J

Act. BW	87	Adj. WW	808
---------	----	---------	-----



KSR 499N

#4581047 - 2/23/2025

3/4 Simmental • Homo-Black, Homo-Polled
JC MR PONTIAC D114K x KSR LIZZIE 499L

Act. BW	85	Adj. WW	767
---------	----	---------	-----



KSR 821N

#4581080 - 2/24/2025

Purebred Simmental • Homo-Black, Homo-Polled
CLEMSON ELITE 41J x KSR EXMAE 821E

Act. BW	102	Adj. WW	674
---------	-----	---------	-----



KSR 1827N

#4581128 - 2/24/2025

7/8 Angus • Homo-Black, Homo-Polled
CONNELLY COMMERCE x KSR ELAINE 1827E

Act. BW	100	Adj. WW	672
---------	-----	---------	-----



KSR 136N

#4580922 - 2/24/2025

Purebred Simmental • Homo-Black, Homo-Polled
KRJ DAKOTA OUTLAW G974 x KSR HEAVENLY 136H

Act. BW	98	Adj. WW	708
---------	----	---------	-----

EFFLING AND NICHOLSON ELECTED TO SERVE THE NORTH CENTRAL REGION



Chris Effling



Chris Nicholson

The American Simmental Association is pleased to announce the results of the 2026 Board of Trustees election. These individuals will begin their three-year terms following the 2026 Annual Meeting held in January.

ELECTED TO THE NORTH CENTRAL REGION:

Chris Effling
Chris Nicholson

ELECTED TO THE EASTERN REGION:

Dr. Brandi Karisch
Scott Trennepohl

WINNING BY ACCLAMATION:

South Central Region, Greg Burden
Western region, Quin LaFollette

NORTH DAKOTA SIMMENTAL ASSOCIATION AWARDS SCHOLARSHIPS



NDJSA Scholarship Winner: Jocelyn Quandt



NDJSA Scholarship Winner: Carter Finke

ND Simmental Association has chosen Jocelyn Quandt of Oakes, ND to receive the ND Simmental Association Scholarship for 2025. Jocelyn is the daughter of Jason and Jessica Quandt. She will be graduating from Oakes High School and plans to attend Northern State University in Aberdeen SD this fall, where she will major in marketing and minor in ag business. Her family cattle operation has its foundation based around the Simmental breed of cattle. Her family aimed to improve their herd genetics, so they began A.I. breeding their commercial cows with Simmental bulls, with their primary goal to transition their commercial cow herd into a purebred Simmental herd. Today, they proudly manage a herd of 300 Simmental females and are constantly preparing for their annual production sale in February. Congratulations Jocelyn!

ND Simmental Association has chosen Carter Finke, Berthold ND as the recipient of the ND Simmental Scene Scholarship for 2025. Carter is the son of Todd and Kelly Finke. He will be graduating from Berthold High School and plans to attend Bismarck State College this fall to work towards a degree in agribusiness. Carter has been around Simmental cattle his whole life as he fell in love with them for their great growth and maternal qualities. He quickly learned to read pedigrees that helped him choose the best animals to enhance his family's cow herd performance. The friendships that he has made over the years within the cattle industry have inspired him to keep his career path in the agriculture sector. Congratulations Carter!

LARSON XL SIMANGUS™

48th Annual Production Sale

Wednesday, **February 25, 2026**

1 PM (MST) • Lemmon Livestock Sale Barn, Lemmon, SD

Selling: 75 Yearling SimAngus™, Simmental and Angus Bulls
25 Elite Registered Yearling Open Heifers (all of Bill's A.I. sired heifers)

Sires include: Broad Range, Gibbs Essential, Dutton, Alpha, Eagle, Poss Rawhide, Growth Fund, TNT Ethan, Merlin and Bichler Manifesto.



H4H 502
STEP UP X EAGLE



H4H 520
DCSD X VIN-MAR MCCLINTOCK



XL 5
BROAD RANGE X BARRICADE



XL 51E
POSS RAWHIDE X COWBOY UP



XL 51F
GIBBS ESSENTIAL X RANCHER



XL 53M
MANIFESTO X J EDGAR HOOVER



XL 571
POSS RAWHIDE X GRADUATE



XL 575
GROWTH FUND X EAGLE



XL 581
DUTTON X BOZEMAN



Bill & Colleen Larson
701.376.5360 (h)
701.369.1291 (c)
Todd & Judy Larson
701.928.0893 (c)

Guest Consignor:
Hetzel H4H Ranch
Ben & Holly Hetzel
701.440.0711 (c)

Ask us about our full
first-breeding-season guarantee.

DVAuction
Broadcasting Real Time Auctions

Visit us at:
www.xlsimmental.com

Join Us in 2026

SATURDAY, FEBRUARY 21	JNR FARMS SIMMENTAL BULL & HEIFER SALE	WILLINGDON, AB
TUESDAY, FEBRUARY 24	SKYWEST SIMMENTALS/VIRGINIA RANCH BULL SALE	DIDSBURY, AB
FRIDAY, FEBRUARY 27	LONE STONE FARMS SIMMENTAL & RED ANGUS BULL SALE	WESTLOCK, AB
SATURDAY, FEBRUARY 28	TRI K CATTLE SIMMENTAL BULL & HEIFER SALE (W/ALBRECHT FARMS)	BEAVERLODGE, AB
MONDAY, MARCH 2	BEECHINOR BROS SIMMENTALS AND CHAROLAIS & GUESTS BULL & HEIFER SALE	BENTLEY, AB
WEDNESDAY, MARCH 4	SPRING LAKE SIMMENTALS, THE ZIMMERS - BULL SALE	DAYSLAND, AB
SUNDAY, MARCH 8	PLACE YOUR BET SIMMENTAL & ANGUS BULL SALE	SEDGEWICK, AB
TUESDAY, MARCH 10	22ND ANNUAL SWANTEWITT & SAGE SIMMENTALS BULL & HEIFER SALE	SHININGBANK LAKE, AB
THURSDAY, MARCH 12	TRANSCON'S 8TH ANNUAL NEXT STEP SIMMENTAL BULL SALE	THORSBY, AB
SATURDAY, MARCH 14	TRANSCON'S RED DEER COUNTY BULL SALE	INNISFAIL, AB
MONDAY, MARCH 16	13TH ANNUAL NORTH COUNTRY RANCLAND SIMMENTAL BULL SALE	DAWSON CREEK, BC
TUESDAY, MARCH 17	LEEWOOD RANCH 10TH ANNUAL SIMMENTAL BULL & HEIFER SALE	MANNVILLE, AB
FRIDAY, MARCH 20	HIGH BLUFF STOCK FARMS CHAROLAIS & SIMMENTAL BULL & HEIFER SALE	INGLIS, MB
SATURDAY, MARCH 21	MCRUER SIMMENTALS 3RD ANNUAL BULL & HEIFER SALE	KILLARNEY, MB
MONDAY, MARCH 23	PLEASANT DAWN CHAROLAIS BULL SALE	OAK LAKE, MB
WEDNESDAY, MARCH 25	JANZEN RANCHES 33RD ANNUAL SIMMENTAL & RED ANGUS BULL SALE	ROSEMARY, AB
SATURDAY, MARCH 28	CAMDEN CATTLE CO. 14TH ANNUAL SIMMENTAL BULL & HEIFER SALE W/NIWA RANCHING	NEW BRIGDEN, AB
MONDAY, MARCH 30	TRANSCON'S PEACE COUNTRY SIMMENTAL BULL SALE	BEAVERLODGE, AB
SATURDAY, APRIL 4	TRANSCON'S VIRDEN SIMMENTAL BULL SALE	VIRDEN, MB
TUESDAY, APRIL 7	TRANSCON'S NORTHERN CONNECTION SIMMENTAL BULL SALE	ST. PAUL, AB
THURSDAY, APRIL 16	SHADY NOOK SIMMENTALS BULL SALE	LACOMBE, AB

Our TEAM Always working for YOU!



Head Office
Box 300
Sundre, AB T0M 1X0
403-638-9377

Field Office
Box 1944
Minnedosa, MB R0J 1E0
403-638-7741



Jay Good
25+ years Transcon Team
Tel: 403-556-5563



Glenn Norton
15-years Transcon Team
Tel: 780-542-0643



Darren Paget
12-years Transcon Team
Tel: 403-323-3985



Cody Coupland
4-years Transcon Team
Tel: 403-877-0799

KLINE

SIMMENTAL RANCH

Hurdsfield, North Dakota



14th Annual Production Sale

02.01.26

2pm CST • at the Ranch • Hurdsfield, ND

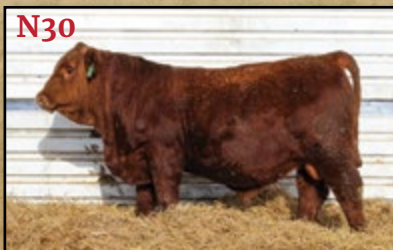
Our customers' success is our success!

If you raise red or black, white, or baldy, we have the **bull power** to take your future calf crops and cow herd to the **NEXT LEVEL**.

- Selling **60** Red & Black Simmental bulls
- Select groups of registered open & commercial bred heifers that were purchased from our bull customers, developed and bred here at KLSR



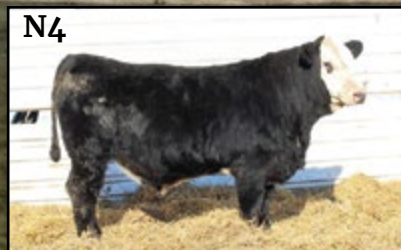
N19
4574288 - KLSR ENGAGE N19 - DOB: 2/23/25
PB SM - Homozygous Polled - Red Non Dilutor



N30
4574253 - KLSR ENGAGE N30 - DOB: 2/26/25
PB SM - Homozygous Polled - Red Non Dilutor



N83
4590452 - KLSR ENGAGE N83 - DOB: 3/8/25
PB SM - Homozygous Polled - Red Non Dilutor



N4
4574267 - KLSR END GAME N4 - DOB: 2/15/25
PB SM - Homozygous Polled & Black



N69
4574236 - KLSR GENESIS N69 - DOB: 3/4/25
PB SM - Homozygous Polled & Black



N77
4574307 - KLSR ALPHA N77 - DOB: 3/7/25
PB SM - Homozygous Polled, Heterozygous Black

Matt: 701-693-6317
Monty: 701-693-6806
Email: klsrcows@gmail.com
www.KLSRCOWS.com

Contact us for a catalog, videos, DNA and other updates prior to sale day.



Kline Simmental Ranch

DVAuction
Broadcasting Real-Time Auctions

Visit us anytime!

291 24th Ave NE
Hurdsfield, ND 58451

INSIGHTS INTO THE IGS CALVING EASE UPDATE

by Jon DeClerck, PhD, ASA EVP
reprinted with permission from www.simmental.org

WHY UPDATES HAPPEN

Genetic evaluations evolve because science evolves.

Just like your phone or computer receives software upgrades, our tools improve as new data and better methodology become available.

Past approaches weren't wrong—today's tools are simply more effective.

Routine updates like this are standard across breed associations and the beef industry. Every major genetic evaluation employs comparable updates as part of their ongoing efforts to remain competitive and ensure the highest degree of accuracy. Our goal with updates is always the same: To improve the predictive power of International Genetic Solutions (IGS) EPD.

A UNIFIED, SCIENCE-DRIVEN DECISION

Before any update is released, the system undergoes validation exercises to test how well the model works and how accurately it predicts real world results. These tests use proven, peer-reviewed methods to provide unbiased measures of performance.

After that, the evaluation underwent review and approval by all 25 IGS partner associations, with input from the geneticists and consultants who support many of those organizations. Each partner had the chance to look at how the update affected their own cattle, but no one could see the impact on other breeds or associations.

This was not an American Simmental Association (ASA) only decision, but a system-wide agreement across the world's largest and most trusted multi-breed genetic evaluation, reflecting consensus on both the science behind the update and the need to implement it now.

A COMMITMENT WE'VE ALWAYS MADE

When I applied for this position, I pledged to continue the long-

standing philosophy of the American Simmental Association:

Profit Through Science

From our founders in 1968 who rejected show-ring fads, to the leaders who navigated Focus 2000 in Columbia, Missouri, our Association has always prioritized objective performance evaluation. We have always believed that genetic evaluation must be rooted in data, not preference, not politics, and not pressure.

A primary reason for forming IGS was to be honest about where our cattle truly stand in the larger beef industry. And we remain committed to that transparency today.

WHAT CHANGED IN THIS UPDATE

This is the first major calving ease model improvement since the adoption of BOLT more than a decade ago. The IGS team has made this update a top priority for the past couple of years. With over 22.5 million cattle and more than 750,000 genotypes in the IGS database, shifts were expected.

The update centered around three scientific advancements:

1. Maternal Genomic Markers

This is a significant upgrade.

Previously, models could not incorporate marker effects for calving ease direct and calving ease maternal simultaneously. New software capabilities and innovations developed by Theta Solutions, LLC now allow us to include those markers, giving a more complete genetic picture and improving prediction accuracy.

2. Improved Handling of External EPDs

When we bring in EPD from other associations (e.g., Angus), we apply a base adjustment. We refined that process, improving the consistency and accuracy of the evaluation.

...Continued on page 58



TRAXINGER

Simmental

Bull Sale

FEBRUARY 11, 2026

1 p.m. | At the Ranch | Houghton, SD

50 Simmental &
SimAngus™ Bulls



TRAXS KODIAK L28 | ASA# 4263428

*Featuring the service of
these leading sires!*



AFCE LAWMAN 320L | ASA# 4268764



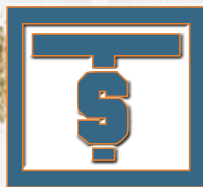
TNT PLATEAU L683 | ASA# 424071



DCR KILLIAN K70 | ASA# 4118728



COLORADO BRIDLE BIT | ASA# 3271382



MIKE & TERRI TRAXINGER | 605-294-7227

MICHAEL TRAXINGER | 605-377-4110

Contact us for a catalog! | E-mail: mtrax@nvc.net

TraxingerSimmental.com | *DVAuction*
Broadcasting Real-Time Auctions

CALVING EASE, Cont'd from page 58

3. Updated Breed-by-Decade Modeling

With millions of phenotypes spanning seven decades, grouping cattle is necessary for proper statistical power. We revised assumptions about genetic progress across breeds, reflecting that breeds have made similar improvements in calving ease over time. This refinement again enhanced model accuracy.

WHAT THIS MEANS FOR ACCURACY

Collectively, these improvements enable the calving ease model to explain roughly 12% more of the phenotypic variation observed in CE. This does not mean every individual animal's CE EPD accuracy increased by 12%; rather, the IGS CE evaluation as a whole is more effective at distinguishing genetics that improve calving ease from those that do not.

Your cattle did not change.

But we believe the tool that describes them has been improved.

Think of it like medical advancements. Twenty years ago, evaluating heart health often required major surgery; today, the same assessment can be done with a minimally invasive scope. The heart didn't change, the diagnostic tools did. The earlier approach wasn't wrong; we simply have better technology available now.

WHY THIS MATTERS

The IGS evaluation exists to serve our breeders, but also the broader commercial

cattle industry. Our responsibility is to ensure our EPD predictions reflect biological reality as accurately as possible. That is how we protect the credibility of our breed and maintain our role as leaders in objective genetic evaluation.

Across the entire IGS population, the average CE change was 0.3 units. As many of you have observed, the Simmental population experienced a larger shift, averaging about 1.6 units for purebred Simmentals.

The fact that this update had a more pronounced effect for ASA underscores our commitment to science-based evaluations. Regardless of the outcome, we follow the data because it reflects our mission to serve the commercial beef industry. That dedication to objectivity and integrity is exactly what our IGS partners and the industry rely on and expect from us.

WHY RELEASE NOW

There is never a "perfect time" for releasing an update.

Delaying until summer:

- Would not reduce the magnitude of any shifts
- Would only postpone the adjustment
- Would leave breeders using outdated predictions for over half a year

Releasing now ensures members make selection, mating, and marketing decisions using the most current and accurate information available today.

We recognize the timing challenges,

but this decision was made because it best serves the membership, IGS partners, and the cattle industry.

MOVING FORWARD

I want to reaffirm my full confidence in the IGS team and in the science underlying this update. Updates like these are part of routine best practices in genetic evaluation. Many of you will recall similar refinements with carcass and growth traits prior to my tenure at ASA, and this process will continue.

Looking ahead, the IGS team is reviewing docility and fat traits, and we remain committed to leveraging the best science and statistical models to enhance prediction accuracy. These enhancements strengthen our evaluation, increase long-term confidence in our predictions, and reinforce the credibility of the Simmental breed within IGS. They demonstrate

- That ASA does not manipulate outcomes.
- That we remain committed to objectivity.
- That we are fully aligned with all IGS partners in advancing science-based predictions.

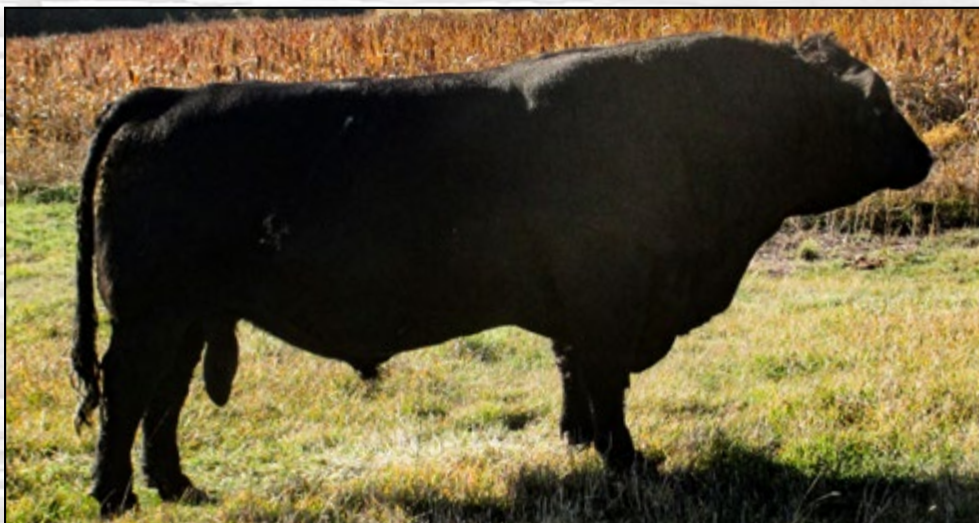
Thank you again for your engagement and your commitment to this association. Please continue reaching out with questions—Dr. Jackie Atkins, Dr. Elizabeth Dressler, Dr. Ben Crites, and I are here to help you make sense of these changes and support your success moving forward.



Benda Ranch

ANNUAL PRODUCTION SALE

Monday, February 9, 2026 • 1 p.m. • Kimball Livestock Exchange, Kimball, SD



KRJ DAKOTA MADE J172 • ASA# 3929093 • KRJ Dakota Outlaw x Double J Miss X066
Sire of several Lots in our 2026 sale

*Selling sons of
Dakota Made*

OTHER SIRES INCLUDE

OMF Epic, WBF Patton, Bridle Bit Resource,
KBHR Bold Ruler, W/C Rest Easy, 3BS Earl,
Dikeman's Konza, JC Mr Pontiac,
GW Hilger One, AFCR First Rate

*All bulls will have Genomic Enhanced
EPDs. The sale catalog & updated
information will be available online*

Selling: **Simmental & SimAngus™ Bulls**

BULLS HAD NO CREEP FEED! • FREE WINTERING UNTIL APRIL 1ST & SEMEN TESTED.



JBS MR. EAGLE 211M • ASA# 4433025
Hook's Eagle x JBS Miss High Road 028K
High seller in our 2025 sale to John Hansen, Gregory SD



JBS DAKOTA BUILT 841M • ASA# 4432976
KRJ Dakota Made x JBS Miss Absolute 929F
High seller in our 2025 sale to TNT Simmentals, Lehr ND



JBS MR. GROWTH SPURT 940M • ASA# 4432925
Deer Valley Growth Fund x JBS Miss Pace 124G
High seller in our 2025 sale to Double J Farms, Garretson SD



BENDA RANCH SIMMENTALS

HOME: 605-778-6703 • JIM'S CELL: 605-730-6703 • JAY'S CELL: 605-730-0215

EMAIL: bendaranch@midstatesd.net

Sale broadcast live on **DVAuction**

BendaRanch.com

CROSSHAIR SIMMENTAL

Sighting in on profitability!



40M

#4443125



134M

#4443189



83M

#4443211



M502

#4367437



M568

#4367504



M584

#4367520

**New Date
& Format!**

Online Only Sale
**WEDNESDAY,
FEB. 4, 2026**

DVAuction
Developing Value Auctions

Bidding Opens Feb. 2 and
closes Feb 4 at 6 p.m.

Selling:

- 40 Simmental & SimAngus™ Red & Black Age-Advantaged Bulls
- 100 Red SimAngus™ Open Heifers
- 20 Black SimAngus™ Open Heifers

Bulls Available for Viewing Anytime
Free Delivery 250 Miles
Volume Discounts

Progeny By:



TNT ASSURANCE J455

#3942173



TNT EXEMPLIFY K508

#4102913



ROCKIN H CAPTIVATE J75

#3991776

TNT Tactic
Bridle Bit Colorado
DCR Killian
CHSR Equalizer
KS Vanderbilt



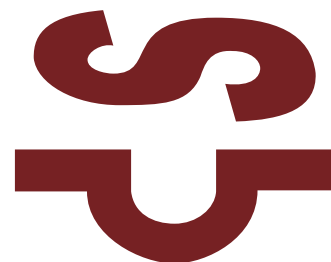
Contact us
for more information or
for a catalog.

**K
R**

Ben & Cassie Kleppe
3220 48th St SE • Dawson, ND 58428
(701) 327-8330 • (701) 426-9210 cell
crosshairsimmental.com



GENERATIONS OF POWERFUL, DEPENDABLE PERFORMANCE!



ANNUAL PRIVATE TREATY BULL SALE - MARCH 2, 2026

FEATURING THESE INDUSTRY-LEADING SIRES

KUNTZ KINGPIN 2H



ASA# 3968312 • Polled/S • Semen Available

	CE	WW	YW	\$GN	MCE	MWW	API	TI
EPDs	7.3	94.8	147.8	0.024	1.8	88.8	124.4	85.7
%	25	2	1	1	70	1	2	1

APLX PAYDAY 20M



ASA# 4507632 • Homozygous Polled • Semen Available

	CE	WW	YW	\$GN	MCE	MWW	API	TI
EPDs	13.3	72.7	98.3	-0.028	4.5	73.0	130.2	76.1
%	3	50	55	35	20	30	1	4

IPU POL ELEVATION 144K



ASA# 4296280 • Polled • Semen Available

	CE	WW	YW	\$GN	MCE	MWW	API	TI
EPDs	16.3	71.2	101.0	-0.026	10.5	73.1	120.5	70.4
%	1	60	50	35	1	25	4	25

CROSSROAD CRUSADER 66M



ASA# 4511098 • Polled • Semen Available

	CE	WW	YW	\$GN	MCE	MWW	API	TI
EPDs	9.8	88.5	118.6	-0.028	3.9	76.5	106.0	76.0
%	15	5	15	35	30	15	25	4



PLEASE SEE OUR WEBSITE OR CALL/TEXT FOR MORE INFORMATION

www.smfleckvieh.com



S/M FLECKVIEH CATTLE

Jeff Sorenson | 605-359-8728 (c)
Garretson, South Dakota
sorenson@augie.edu

ADVERTISER'S INDEX

100X Ranch.....	6	Kline Simmentals.....	57
3C Christensen/NLC.....	BC	Koeplin Black Simmentals.....	29
Ag-Land Farms.....	46	Kunkel Simmental Ranch.....	13
Bata Brothers Simmental.....	38	LaBatte Simmentals.....	24
Begger's Diamond V.....	15	Larson XL Simmental.....	55
Benda Simmentals.....	61	Lazy J Bar Ranch.....	30
Bert's NR Simmentals.....	46	McColl Simmentals.....	46
Brink Simmental.....	22	Premium Beef Bull & Female Sale.....	46
C Diamond Simmentals.....	31	Quandt Cattle Co.....	34-35
Christensen Simmentals.....	16	Rydeen Simmentals.....	42
CK Cattle.....	IFC	S/M Fleckvieh Cattle.....	63
Crosshair Simmentals.....	62	Schnabel Ranch Simmentals.....	30
Dakota Power Simmental Sale.....	IBC	Schweitzer Simmentals.....	46
Dakota Xpress Simmental Group.....	9	Silver Dollar Simmental.....	39
Deckert Simmental Ranch.....	51	Sorenson Ranch.....	32
Double J Farms.....	5	Springer Simmentals.....	28
Eckstrum Simmentals.....	33	Stavik Simmental.....	11
Eichacker Simmentals.....	45	Sys Simmentals.....	47
Ellingson Simmentals.....	7	Thyen Simmentals.....	14
Genetic Edge Simmental.....	65	TNT Simmentals.....	41
Goeken Cattle.....	43	Transcon.....	56
Hart Simmentals.....	17	Traxinger Simmentals.....	59
Healy Simmentals.....	44	Trifecta Cattle Co.....	25
Hoiby Simmentals.....	37	Wager Cattle.....	IFC
Kaelberer Simmentals.....	27	Wheatland Cattle Company.....	18-19
Keller Broken Heart Simmental.....	23	Wicks Cattle.....	4
Kenner Simmentals.....	49	Wilkinson Simmentals.....	66
Klain Simmentals.....	52-53	Windy Creek Simmental.....	21

Windy Creek, Cont'd from page 22

stray from our foundation, but his interest will allow us to focus and expand on the females we raise as well."

The operation also includes full-time employee Jordan Krueger, who has been with Windy Creek for about 15 months. His role is critical, particularly because Jeremy works full-time as a salesman at C&B in Mitchell, and Bethany is a chemistry professor at Dakota Wesleyan University.

Earned, Not Given

The Lehrmans' Producer of the Year honor reflects more than cattle quality. It recognizes a couple that stayed the course, made hard decisions, and built something lasting by showing up every day.

They are not flashy. They are not fluffy. They are focused.

While their cattle speak for themselves in herds across the country, the Lehrmans' passion is rooted in watching and helping others succeed. Simmental cattle are the vehicle for doing that.

And that sign on the wall? It still fits.

At Windy Creek Cattle Company, dreams are welcome—but only if you're willing to work for them.

*Photo credit:
Terry Ellingson,
Dahlen, ND*

DOUBLE T SIMMENTALS • KINN SIMMENTAL • SRF SIMMENTALS

GENETIC EDGE

PRODUCTION SALE

◆◆◆ New Sale Date: ◆◆◆
FEB. 5, 2026

Kist Livestock Auction, • Mandan, ND

Selling **100** Simmental & SimAngus™ Bulls
40 Registered & Commercial Bred Heifers
and Select Open Females

A new
partnership
for the future!

2025

Sale Highlights

Go to www.GeneticEdgeSale.com
to view this year's sale offering!



The Genetic Edge Sale Partners:

TIM & TAM CLARK
Double T Simmental
Turtle Lake, ND
701.799.7752

TYLER & TIFFANY KINN
Kinn Simmental
Turtle Lake, ND
701.220.5276

DAVIS & AMBER KINN
Kinn Simmental
Benedict, ND
701.400.5108

TODD & KELLY FINKE
SRF Simmental
Berthold, ND
701.240.7711

www.geneticedgesale.com

BREEDING FOR THE FUTURE

WILKINSON FARMS SIMMENTALS

FEBRUARY 19, 2026

1:00 PM CST AT THE C-B SALE FACILITY
4 MILES SOUTH OF THE RANCH, MONTPELIER, NORTH DAKOTA

28TH ANNUAL PRODUCTION SALE

WS SWEET SIXTEEN F16



\$API 189 - \$TI 99

PB SM Homo Black, Homo Polled ASA 3431735
Selling this cornerstone donor cow.

9N ASA 4535819



\$API 186 - \$TI 107

PB SM Red, Homo Polled
WS LANDMARK 14L x ROCKIN H CAPTIVATE J75

33N ASA 4536015



\$API 179 - \$TI 99

PB SM Homo Black, Homo Polled
IR/JLN BOOMER x CDI HIT MAN

4N ASA 4535944



\$API 206 - \$TI 105

PB SM Red, Homo Polled
BRIDLE BIT HERSCHEL H027 x HOOK `S FULL FIGURES 11F

25N ASA 4535836



\$API 169 - \$TI 98

3/4 SM 1/4 AN Homo Black, Homo Polled
KLEIN KICK OFF K068 x KBHR HERO H109

48N ASA 4535861



ACT BW 88 - WW RATIO 111

PB SM Red, Homo Polled
WS TOMKAT 54K x HOOK `S FULL FIGURES 11F

12N ASA 4535940



BW RATIO 97 - WW RATIO 106

PB SM Homo Black, Homo Polled
KBHR ABSOLUTE K125 x HOOK `S FULL FIGURES 11F

55N ASA 4535969



\$API 173 - \$TI 101

3/4 SM 1/4 AN Red, Homo Polled
BCLR FORGE J8871 x CLRS GUARDIAN 317G

6N ASA 4535936



BW RATIO 99 - WW RATIO 109

PB SM Homo Black, Homo Polled
WS ENHANCEMENT 25H x 9 MILE ABUNDANCE 7507

60 SIMMENTAL AND SIMANGUS™ BULLS

20 BRED FEMALES



DVAuction
Broadcasting Real-Time Auctions

TERRY AND CATHY SCHLENKER FAMILY MONTPELIER, NORTH DAKOTA www.wilkinsonfarmssimmentals.com

Terry 701-320-2171 - Aaron call/text 701-269-8271 - Jordan 701-320-1895 - eatbeef@daktel.com

WE REQUEST NO FRIDAY NIGHT OR SATURDAY CALLS OR VISITS, PLEASE.

Marty Ropp 406-581-7835

Corey Wilkins 256-590-2487

Jared Murnin 406-321-1542

ALLIED
GENETIC RESOURCES
alliedgeneticresources.com

SELLING 55 YEARLING BULLS

DAKOTA POWER

SIMGENETIC BULL SALE

JANUARY 26, 2026

1 PM

HANNAFORD, ND

VIDEOS & ONLINE BIDDING THROUGH DVAUCTION.COM

THSR CALIBER N5044



PB SM | ASA #: 4523354 | ADJ. BW: 92 | ADJ. WW: 914
RF CALIBER 014G X THSR MS SLAM 760E | CE: 5.7 | BW: 3.8
WW: 98.1 | YW: 155.2 | MCE: 6.8 | MILK: 28.1 | MWW: 77.0 | API: 113.1 | TI: 80.4

THSR MAGNUM N5002



1/2 SM 1/2 AN | ASA #: 4523314 | ADJ. BW: 76 | ADJ. WW: 800
S A V MAGNUM 1335 X THSR MS HUSTLER L3089 | CE: 15.0 | BW: -1.0
WW: 94.6 | YW: 154.5 | MCE: 9.2 | MILK: 32.2 | MWW: 79.4 | API: 134.4 | TI: 90.7

THSR CALIBER N5047



PB SM | ASA #: 4523357 | ADJ. BW: 87 | ADJ. WW: 812
RF CALIBER 014G X THSR MS SLAM 760E | CE: 2.0 | BW: 4.6
WW: 94.4 | YW: 141.8 | MCE: 4.1 | MILK: 28.1 | MWW: 75.2 | API: 104.0 | TI: 75.3

THSR COWBOY CUT N5053



1/2 SM 1/2 AN | ASA #: 4558044 | ADJ. BW: 91 | ADJ. WW: 806
CCR COWBOY CUT 5048Z X THSR DRIVE J1990 | CE: 11.8 | BW: 1.0
WW: 94.6 | YW: 153.8 | MCE: 10.2 | MILK: 25.2 | MWW: 72.8 | API: 157.1 | TI: 96.6

THSR CLICKER N5315



1/2 SM 3/8 AN 1/8 CS | ASA #: 4550469 | ADJ. BW: 83 | ADJ. WW: 859
THSR CLICKER K222 X THSR MS STONE COLD L3328 | CE: 12.6 | BW: -1.7
WW: 88.4 | YW: 137.1 | MCE: 9.4 | MILK: 27.5 | MWW: 71.2 | API: 140.0 | TI: 92.6

THSR GENESIS N5317



1/2 SM 1/2 AN | ASA #: 4523308 | ADJ. BW: 86 | ADJ. WW: 744
LBRS GENESIS G69 X TOPP GEORGINA 0167 | CE: 9.9 | BW: 1.9
WW: 98.8 | YW: 152.4 | MCE: 7.9 | MILK: 28.4 | MWW: 77.3 | API: 152.0 | TI: 99.1

THSR MAGNUM N5013



1/2 SM 1/2 AN | ASA #: 4523325 | ADJ. BW: 82 | ADJ. WW: 823
S A V MAGNUM 1335 X THSR MS HUSTLER L3139 | CE: 12.9 | BW: -0.5
WW: 97.4 | YW: 161.5 | MCE: 8.6 | MILK: 34.3 | MWW: 82.9 | API: 144.7 | TI: 98.0

THSR GENESIS N5048



PB SM | ASA #: 4523358 | ADJ. BW: 88 | ADJ. WW: 916
LBRS GENESIS G69 X THSR MS RIDDLER F861 | CE: 5.4 | BW: 3.5
WW: 114.8 | YW: 174.4 | MCE: 5.4 | MILK: 30.4 | MWW: 87.7 | API: 158.7 | TI: 107.5

THSR RANCHER N5210



PB SM | ASA #: 4523397 | ADJ. BW: 95 | ADJ. WW: 777
SVS RANCHER 42H X THSR MS BLUE PRINT K299 | CE: 2.3 | BW: 4.4
WW: 85.0 | YW: 132.9 | MCE: 0.5 | MILK: 20.6 | MWW: 63.0 | API: 100.0 | TI: 74.0



TRIPLE H SIMMENTALS

KELLY & BRYAN HANSON 701-789-1391 or 701-789-0655

11010 County Road 26 Hannaford, ND 58448

WWW.TRIPLEHSIMMENTALS.COM



VISIT DVAUCTION TO
VIEW & BID ONLINE!

LARGE SELECTION. GUARANTEED. VALUABLE.



SCHOOLEY JACQUE 823J :: ASA 3908790
Eye appealing with high carass! He is prominent sire and maternal grandsire to many in the offering!



GIBBS 9114G ESSENTIAL :: ASA 3716905
Large group of front end purebred sons of this multi-trait leading sire.



CCR BEDROCK 5171J :: ASA 4028738
An outstanding set of percentage bulls in the offering by this easy fleshing, multi-use sire.



3C Emerge 4004M :: ASA 4451567
2025 high selling bull purchased by ABS Global
Look for his progeny born in the spring of 2026!

55th Annual Production Sale **AT THE RANCH, WESSINGTON, SD**

FRIDAY, MARCH 20, 2026

Offering 120+ Top Tier Simmental & SimAngusTM yearling bulls

NLC
SIMMENTAL RANCH

Rick, NaLani,
NaLea, Chase, & Swayzee Dunsmore
21830 372nd Ave., Wessington SD 57381
Home: 605-458-2425 • Rick cell: 605-354-7523
NaLani cell: 605-350-5216

3C CHRISTENSEN RANCH
Wessington, SD
John & Carly Christensen
Tyler, Cam, Law, Cecil & Kit Fagerhaug
37273 216th St • Wessington, SD 57381
Home: 605-458-2218 • John Cell: 605-350-1278
Tyler Cell: 605-280-1416 • Cam Cell: 605-350-2018